

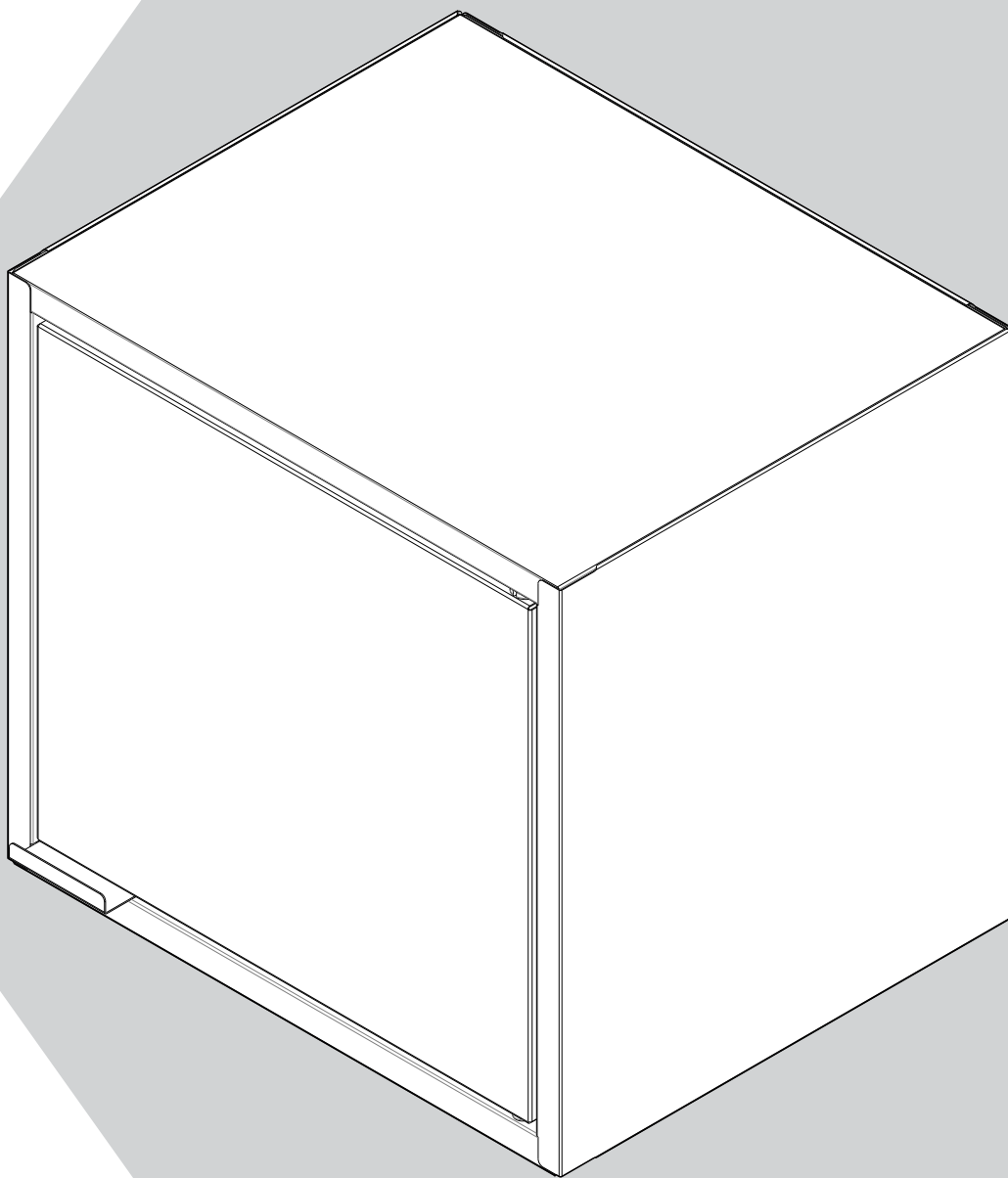


MANHATTAN
COMFORT

Assembly Guide

Model: 12GMC1 / 12GMC2 / 12GMC3 / 12GMC4

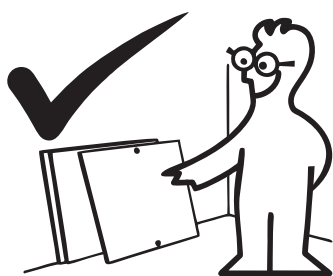
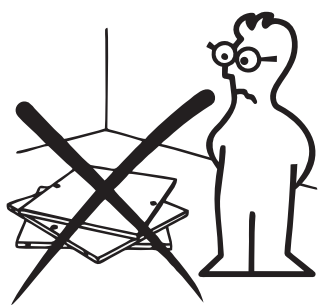
Floating Square Cabinet



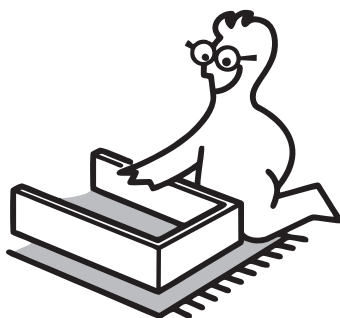
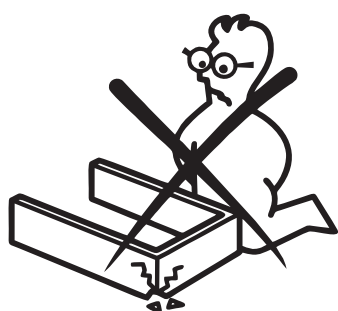
Stuck? Questions? We are here to help.

1-888-230-2225

help@manhattancomfort.com



In order to ease the assembly, you should separate and identify the parts first

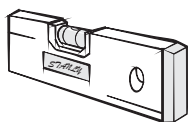


Do not place the parts directly onto the floor. Use a cardboard sheet or a mat to place the parts, during the separation and assembly.

IMPORTANT

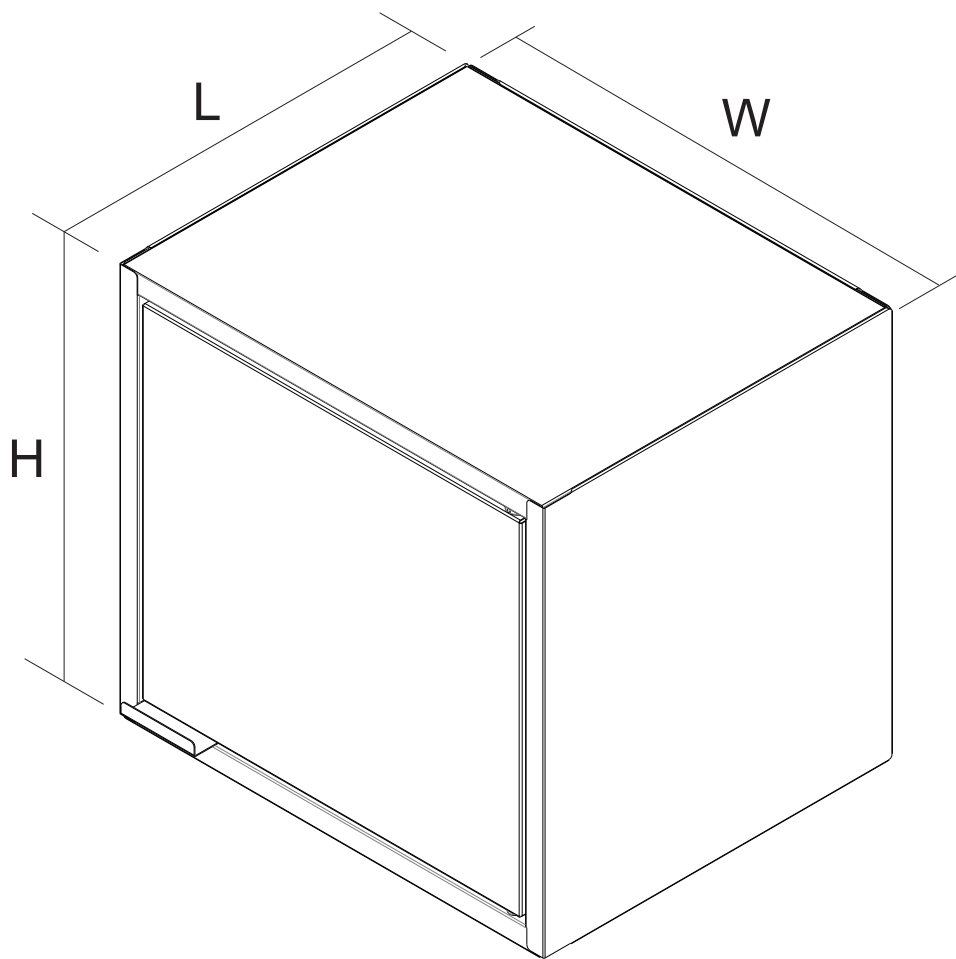
In order to avoid severe or even fatal injuries, follow the instructions carefully.

**Tools Needed (not supplied)*



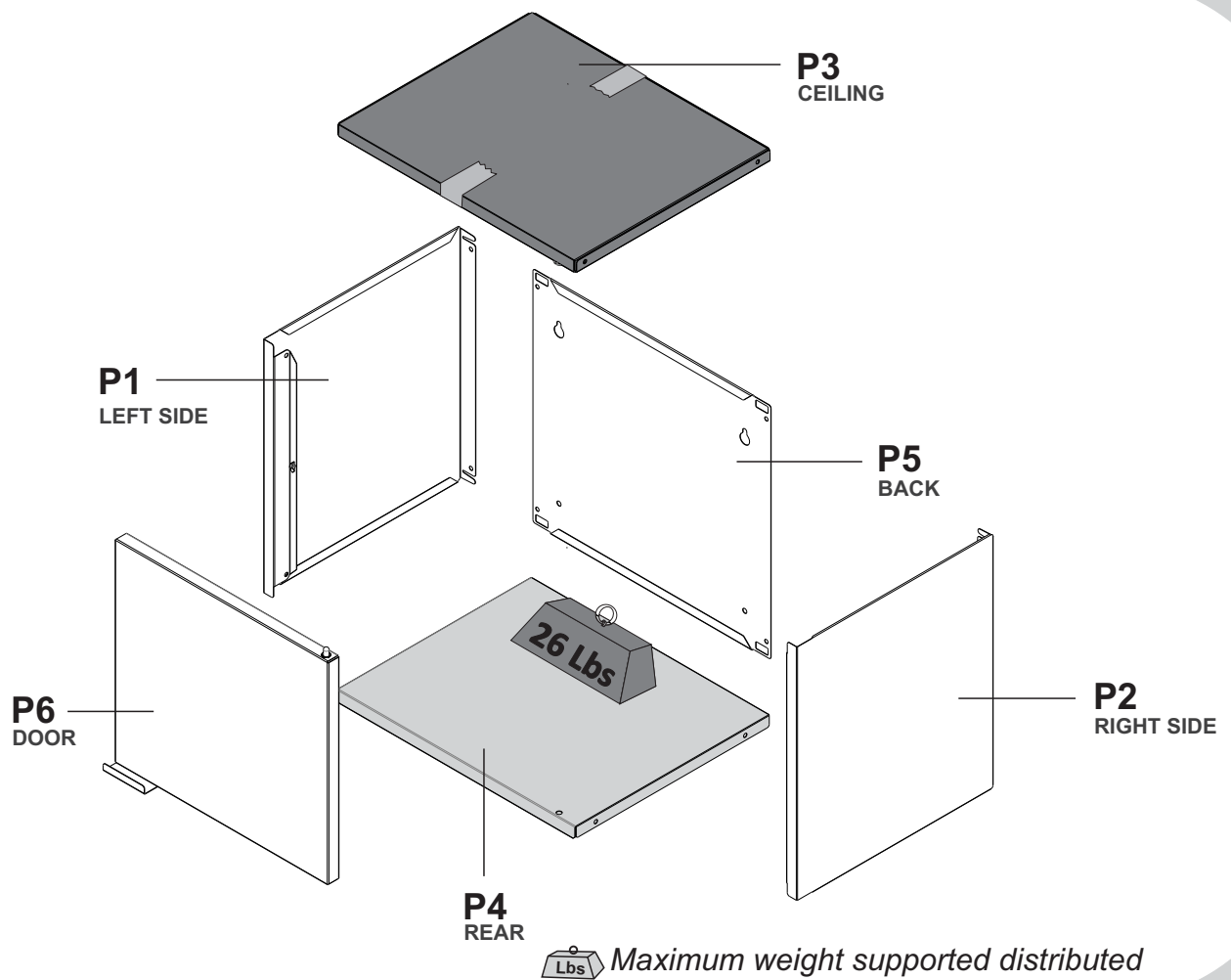
IDENTIFICATION OF PARTS

		IDENTIFY THE COLOR OF YOUR CABINET									DIMENSION		
Nº	DESCRIPTION	BLACK MATT	WHITE MATT	BLUE	GRAY	MATERIAL	QUANTITY		LENGTH	WIDTH	THICKNESS		
P1	SIDE 1DOOR SMART	3000009529	3000009526	3000009528	-	STEEL	1	PC	12,68"	11,30"	0,91"		
P2	SIDE SMART	3000009069	3000009086	3000009096	-	STEEL	1	PC	12,68"	11,30"	0,91"		
P3	CEILING 1DOOR SMART	3000009074	3000009089	3000009100	-	STEEL	1	PC	13,70"	11,22"	0,63"		
P4	REAR 1DOOR SMART	3000009081	3000009092	3000009103	-	STEEL	1	PC	13,74"	11,22"	0,59"		
P5	BACK SMART	3000009058	3000009087	3000009098	-	STEEL	1	PC	13,66"	12,68"	0,08"		
P6	DOOR SMART	3000009093	3000009141	3000009104	3000009063	STEEL	1	PC	12,24"	11,14"	0,63"		



ASSEMBLED PRODUCT:

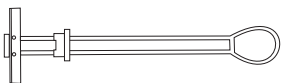
H: 12.59" W:13.77" L:11.22"



Hardware list

F1

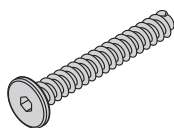
1000008297



Qty. 4

F2

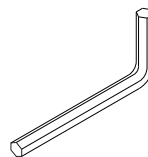
1000008616



Qty. 4

F3

1000009033



Qty. 1

F4

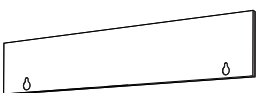
1000000281 - WHITE
1000007352 - BLACK
1000010221 - BLUE



Qty. 4

F5

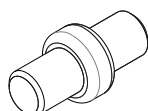
3000008409



Qty. 1

F6

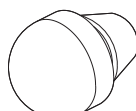
1000010136



Qty. 1

F7

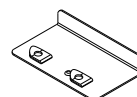
1000008285



Qty. 2

F8

3000009645 - WHITE
3000009643 - BLACK
3000009649 - BLUE
3000009647 - GREY



Qty. 1

F9

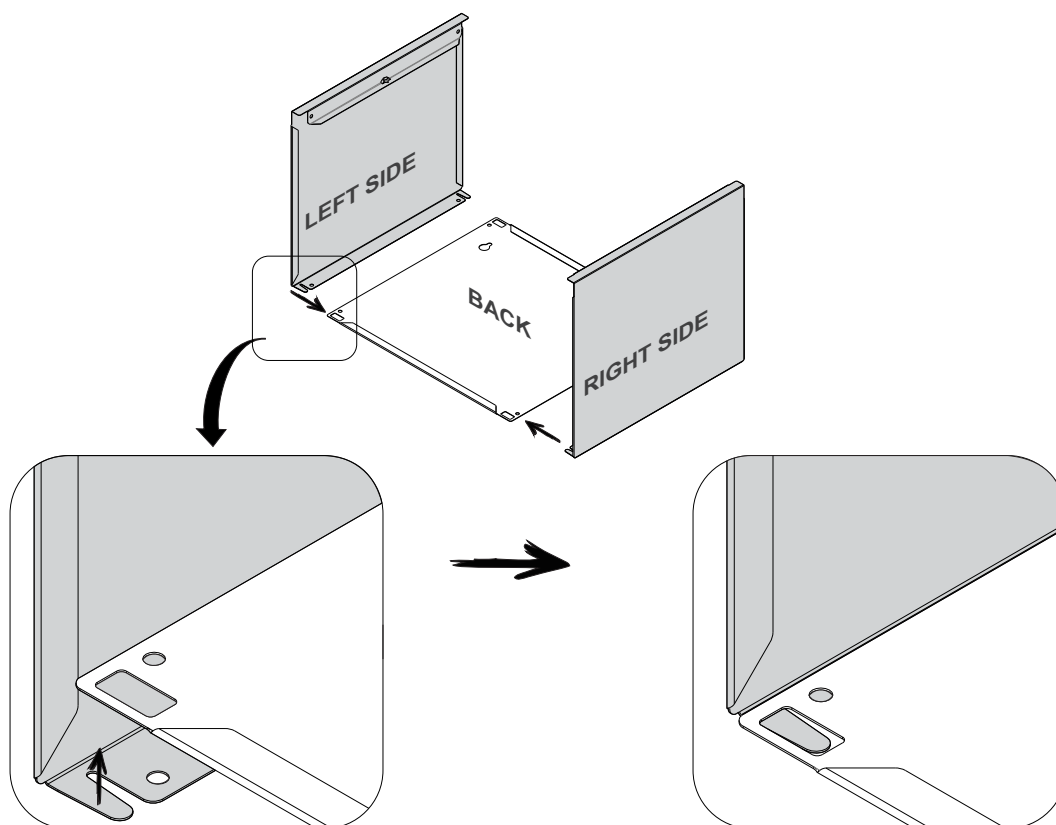
1000008285



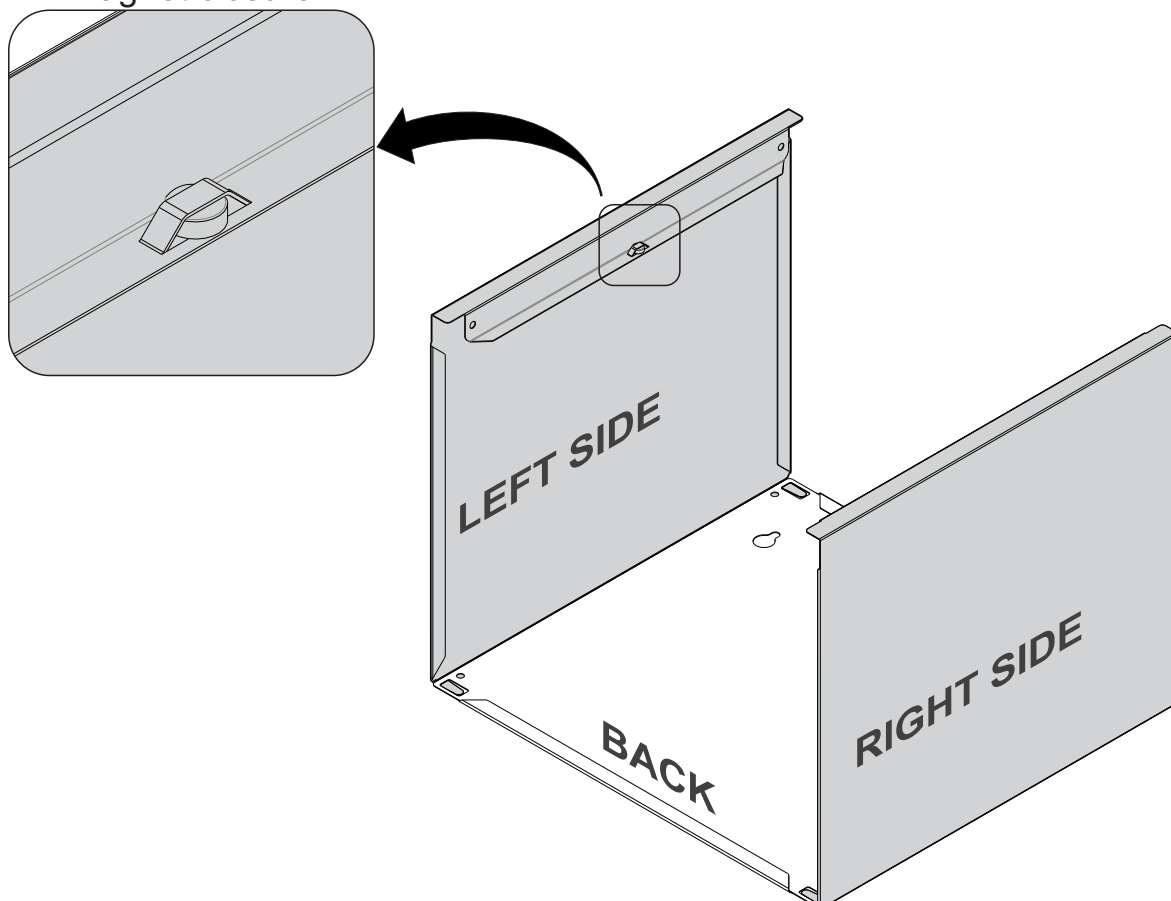
Qty. 1

01

1 - Attach the parts **LEFT SIDE** and **RIGHT SIDE**, under the part **BACK**. Positioning the cut-out of part **BACK** over the safety grapple of parts **LEFT SIDE** and **RIGHT SIDE**.



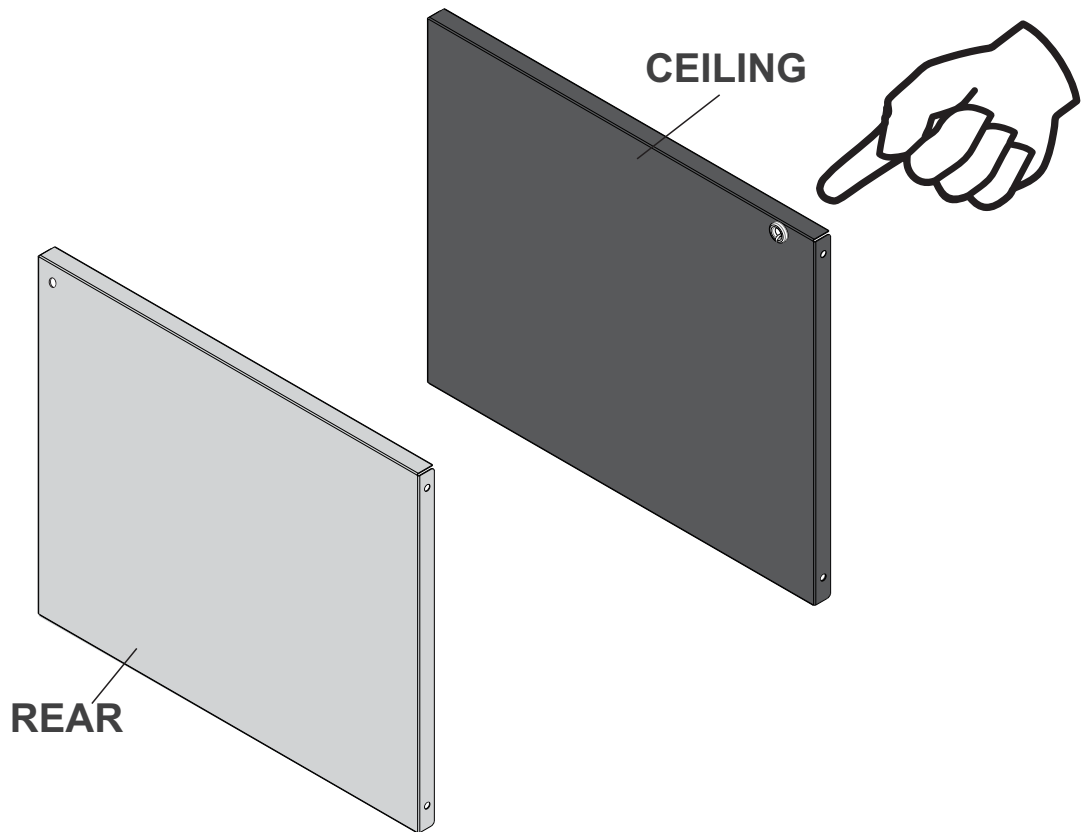
Magnet closure



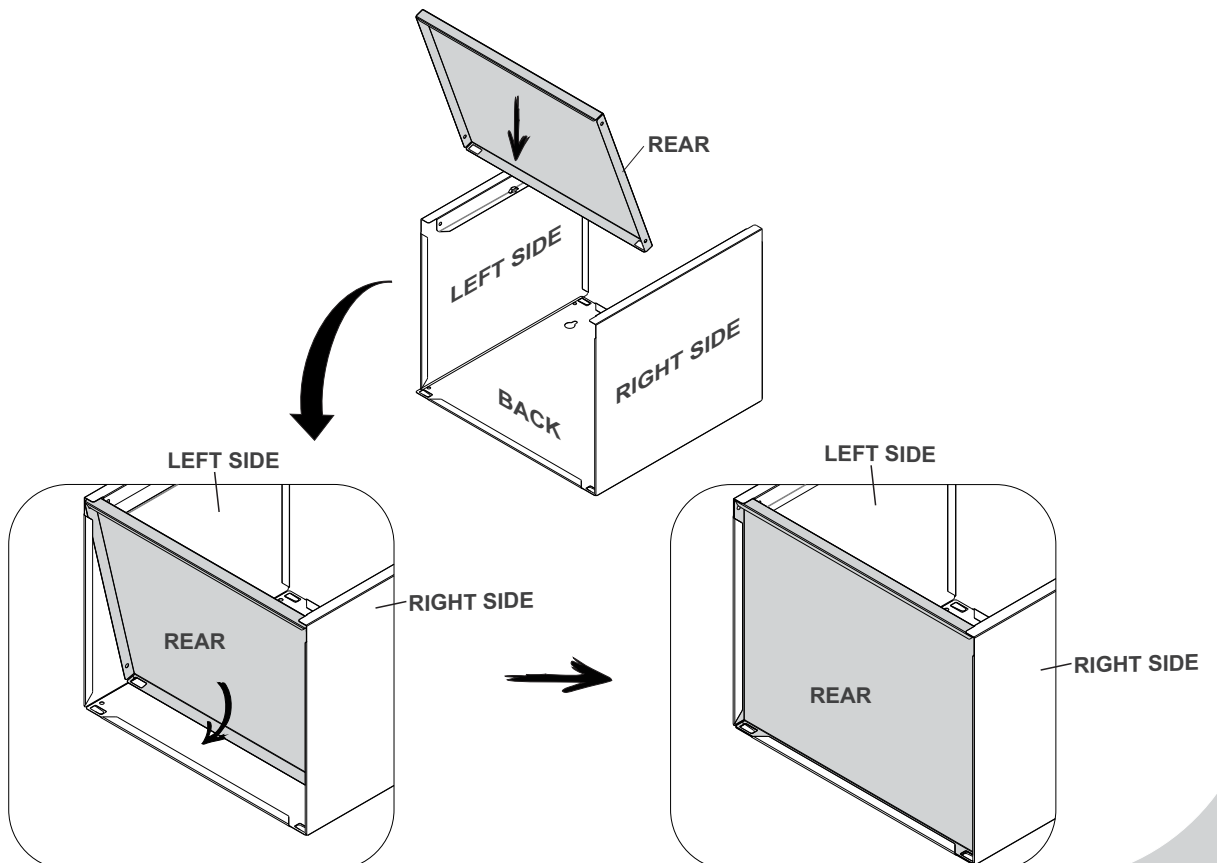
02

03

1 - Identify the parts as figure below:
REAR with hole and **CEILING** with socket.



- 1 - Slightly incline the part **REAR**, and place it inside the cut - out of the parts **LEFT SIDE** and **RIGHT SIDE**.
2 - Slide part **REAR** into the folds of part **LEFT SIDE**, **RIGHT SIDE** and **BACK**.

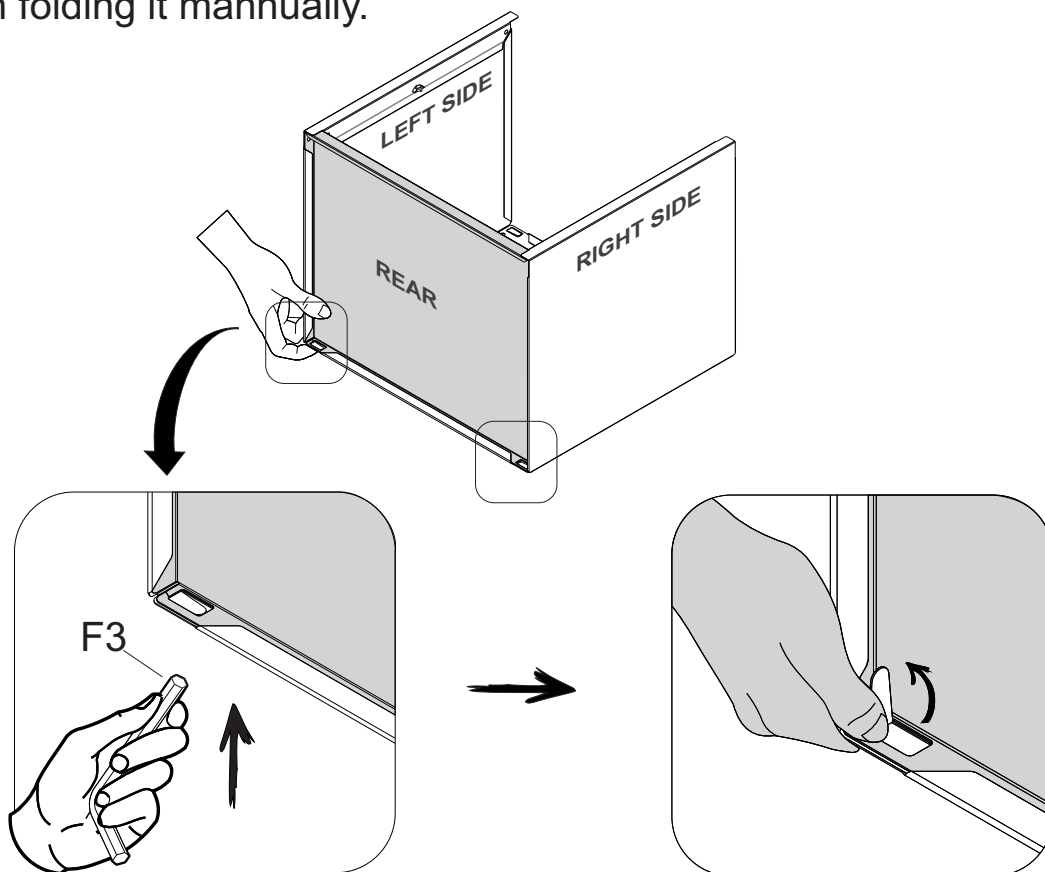


04

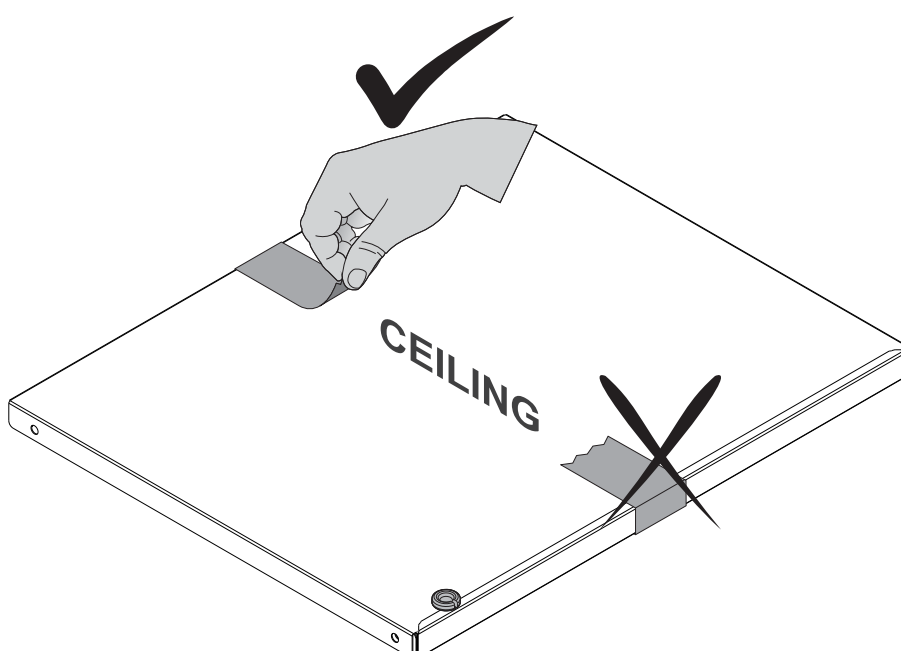
05

1 - With the end of **F3**, smash the safety claw, locking part **REAR** to part **LEFT SIDE**, **RIGHT SIDE** and **BACK**.

2 - Finish folding it manually.



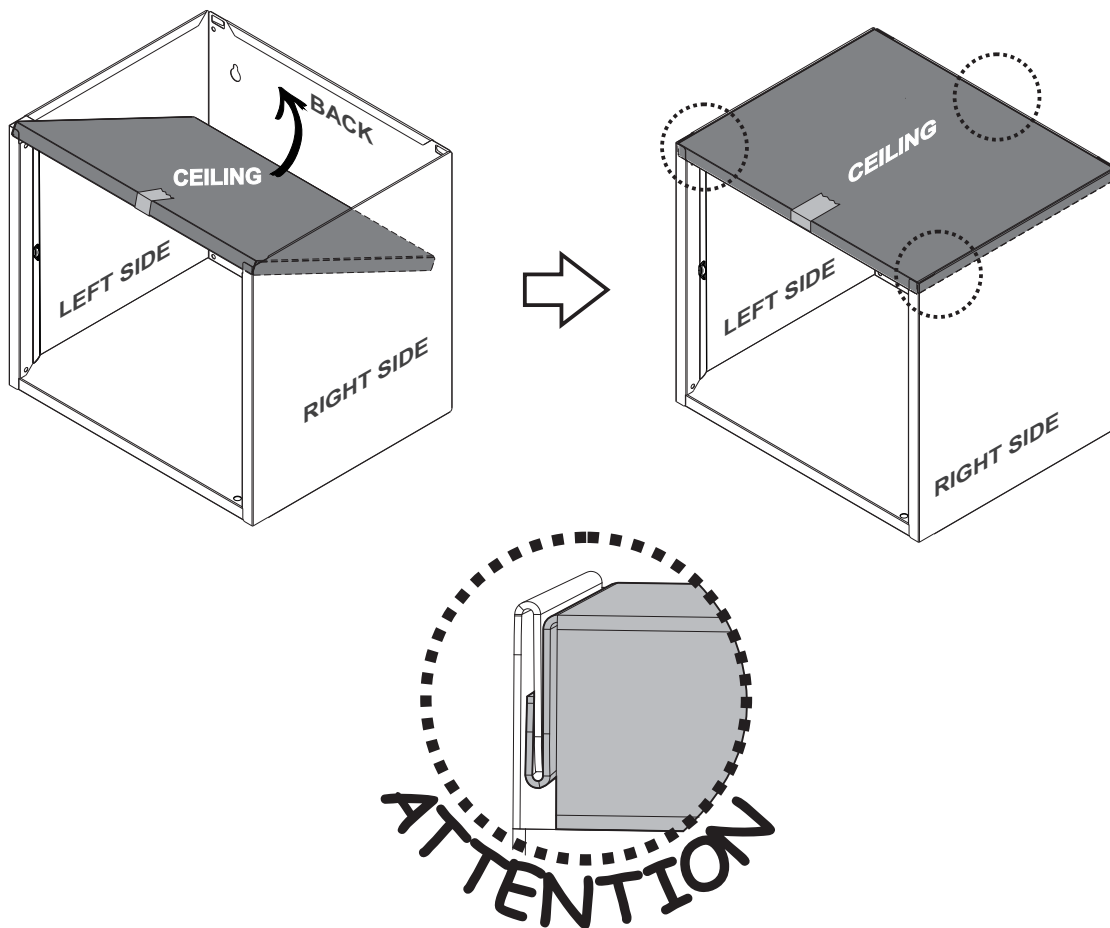
IMPORTANT: REMOVE THIS RIBBON ONLY TO CONTINUE MOUNTING



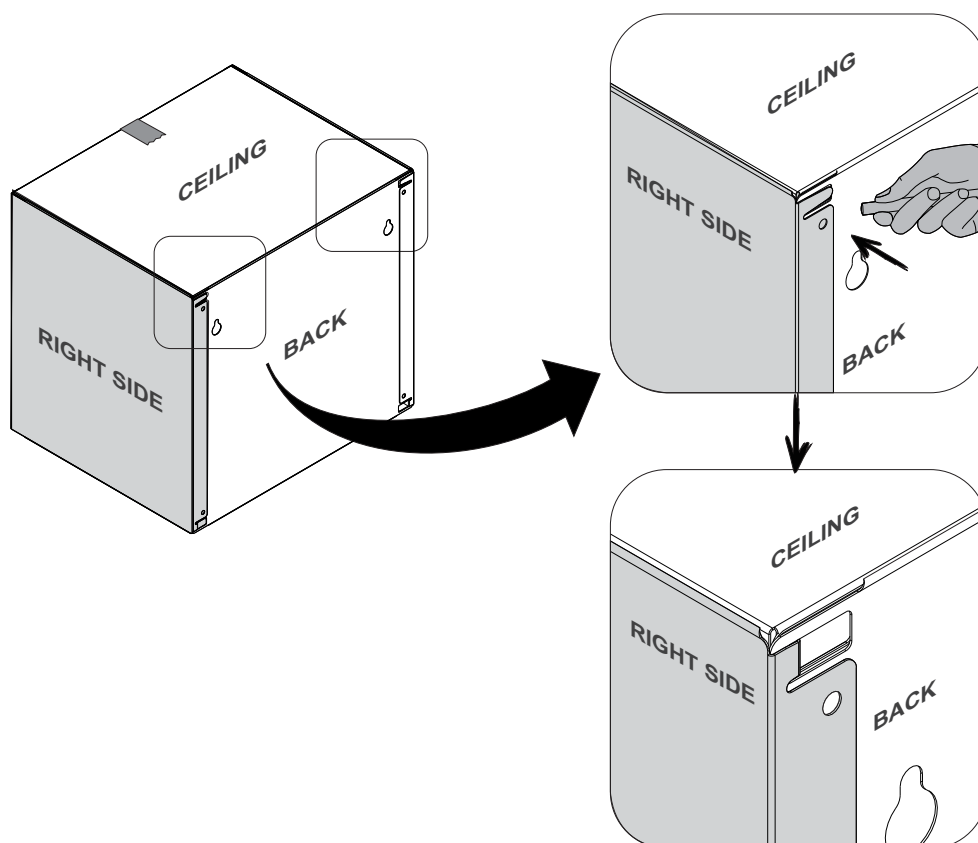
06

07

- 1 - Attach the **CEILING** part onto the **LEFT SIDE** and **RIGHT SIDE** parts.
- 2 - Check all the fittings, before continuing.

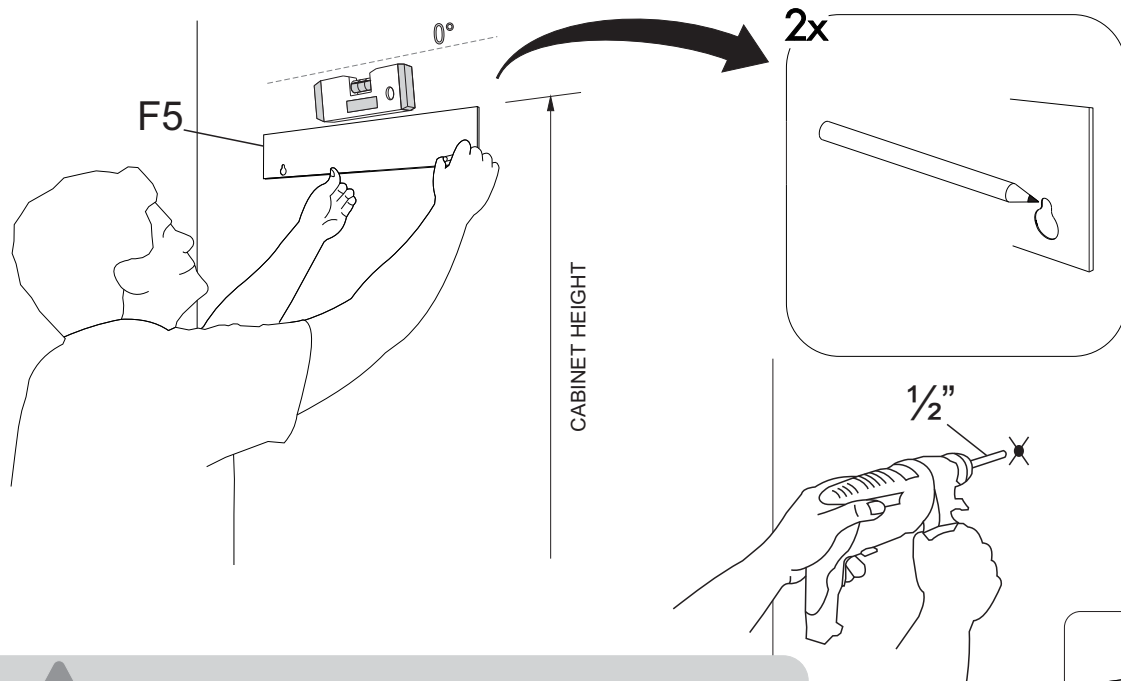


- 1 - With the end of **F3**, smash the safety claw, locking part **CEILING** to part **LEFT SIDE** and **RIGHT SIDE** and **REAR**.
- 2 - Finish folding it manually.

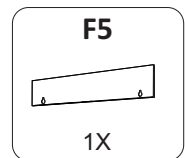


08

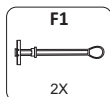
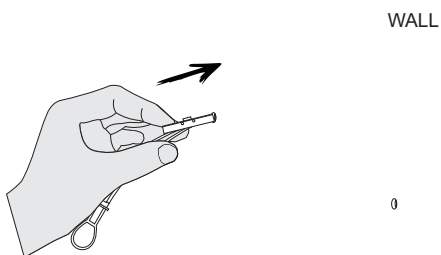
- 1 - Using the **F5** template, make markings on the wall as indicated.
- 2 - It is necessary to use the level.
- 3 - Drill the wall over the marked points.



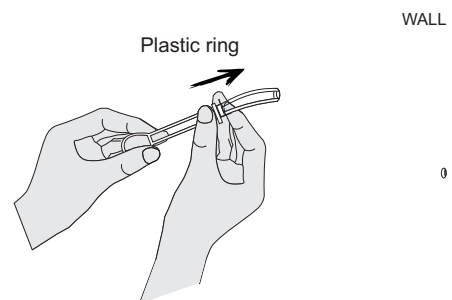
IMPORTANT: CABINET MUST BE ATTACHED TO THE WALL
USE THE CARDBOARD TEMPLATE TO FIX THE WALL CABINET ON THE WALL
IT IS IMPORTANT TO USE A LEVEL



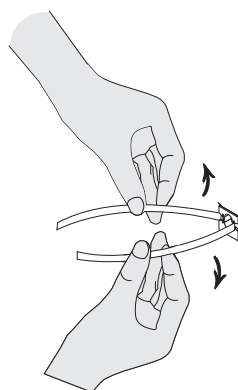
- 1 - Insert the metal part of the bushing into the hole until it overcomes the wall.



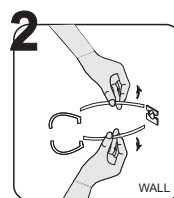
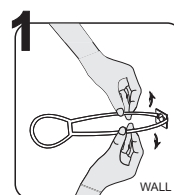
- 2 - Pull the bushing driving it against the wall and then push the plastic ring until it leans close to the wall.



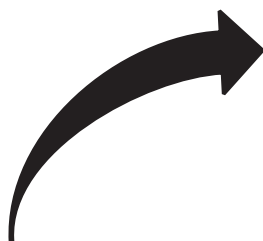
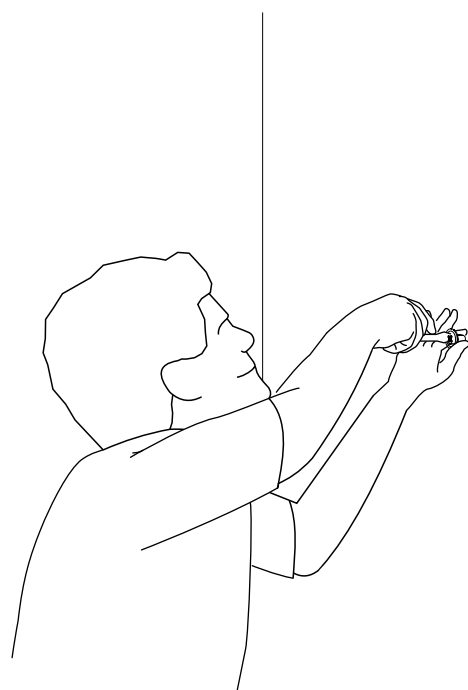
- 3 - Break the bushing's rods



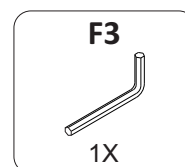
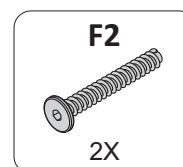
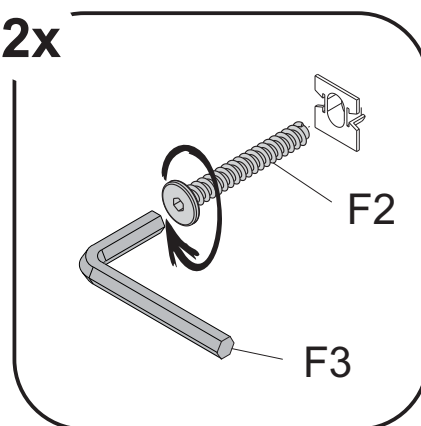
WALL



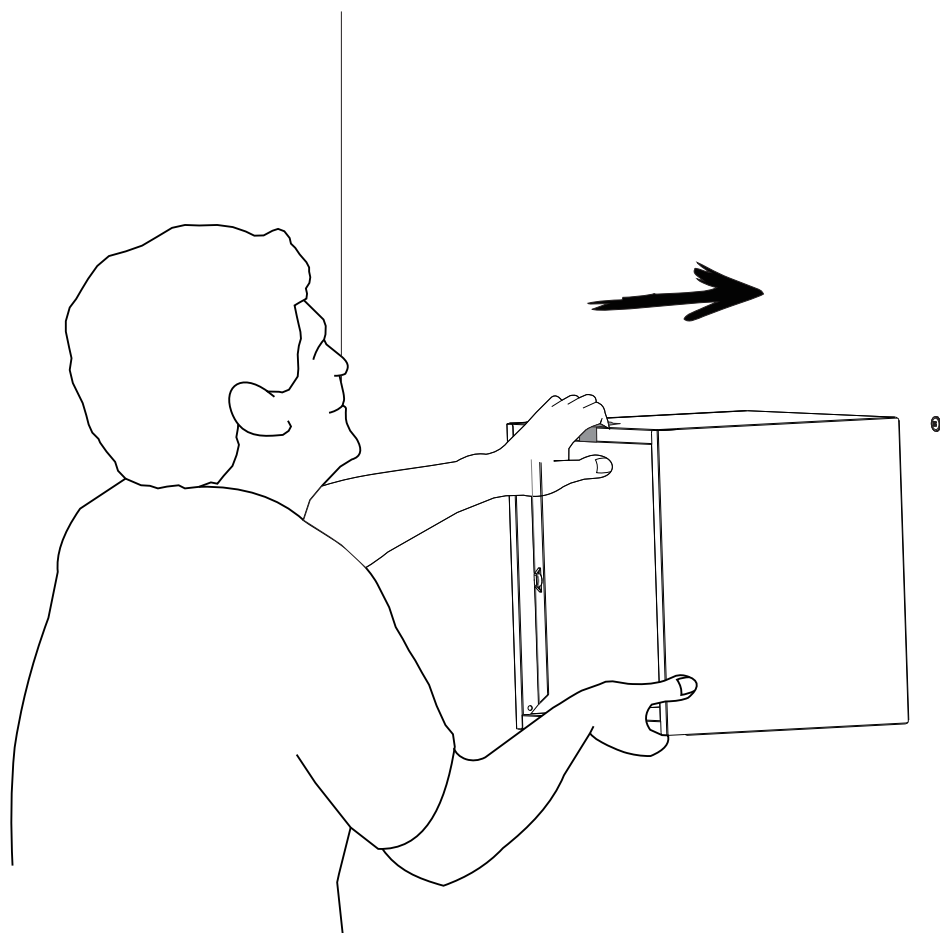
- 1- Insert the screw **F2** into the hole on the wall.
- 2- Turn the screw clockwise, using the **F3** part .



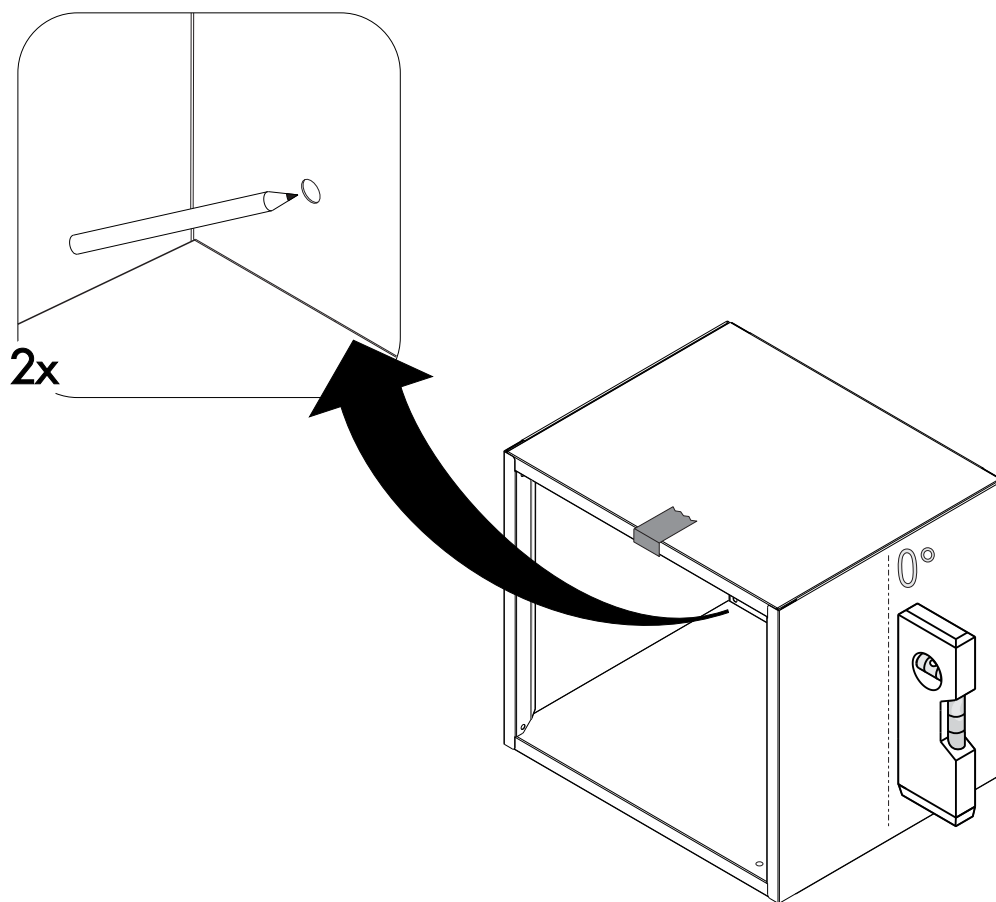
2x



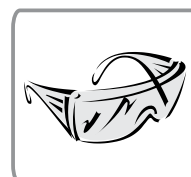
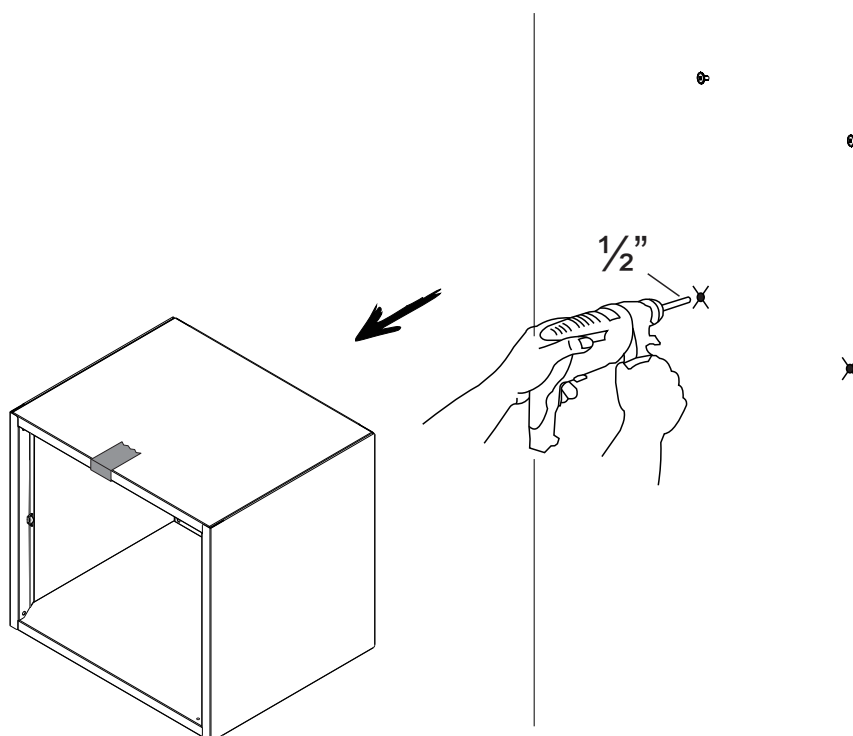
- 1- Approach the cabinet by fitting the **F2** screw.



- 1 - Align the cabinet with the use of a level.
- 2 - Mark the wall through the holes in the bottom of the cabinet.

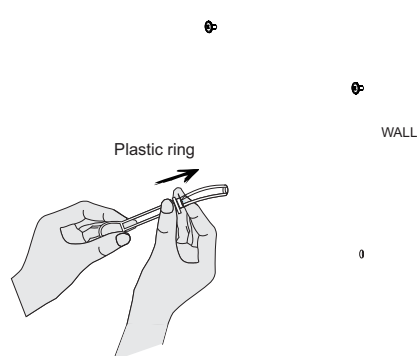
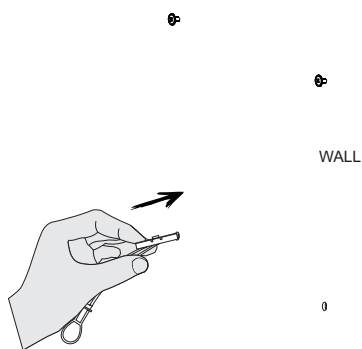
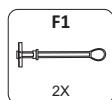


- 1 - Move the cabinet away
- 2 - Drill the wall over the marked points.

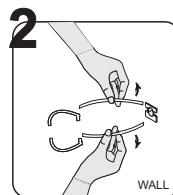
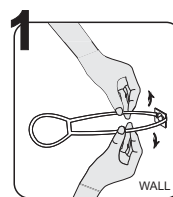
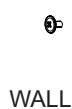
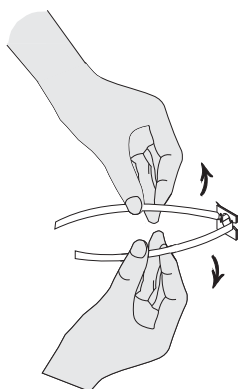


1 - Insert the metal part of the bushing into the hole until it overcomes the wall.

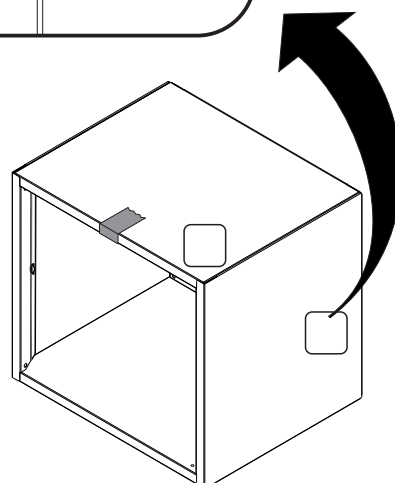
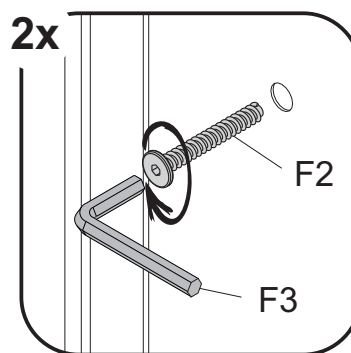
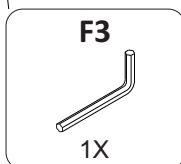
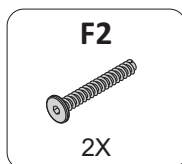
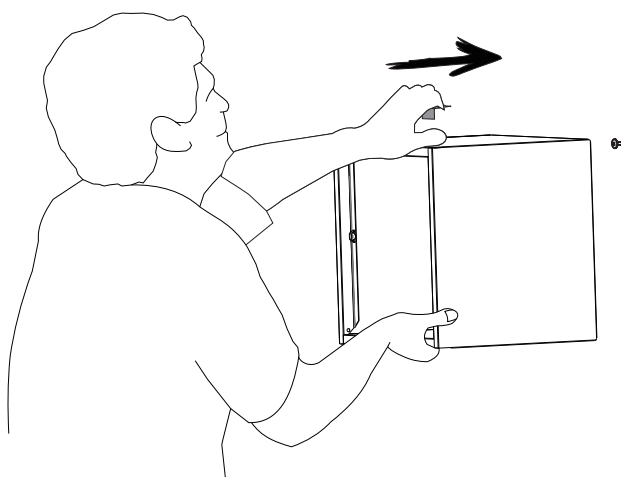
2 - Pull the bushing driving it against the wall and then push the plastic ring until it leans close to the wall.



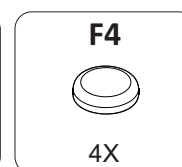
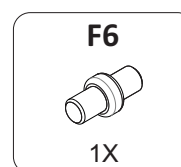
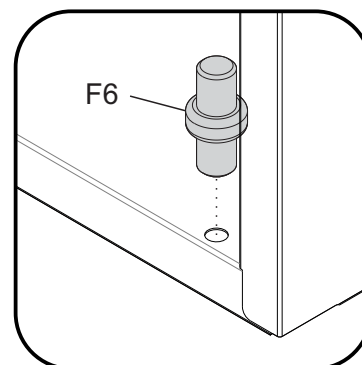
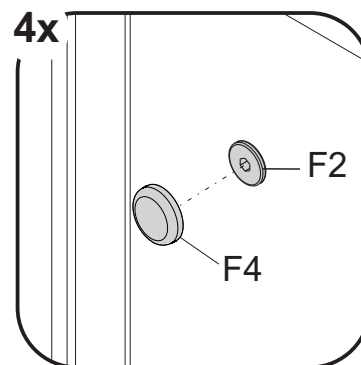
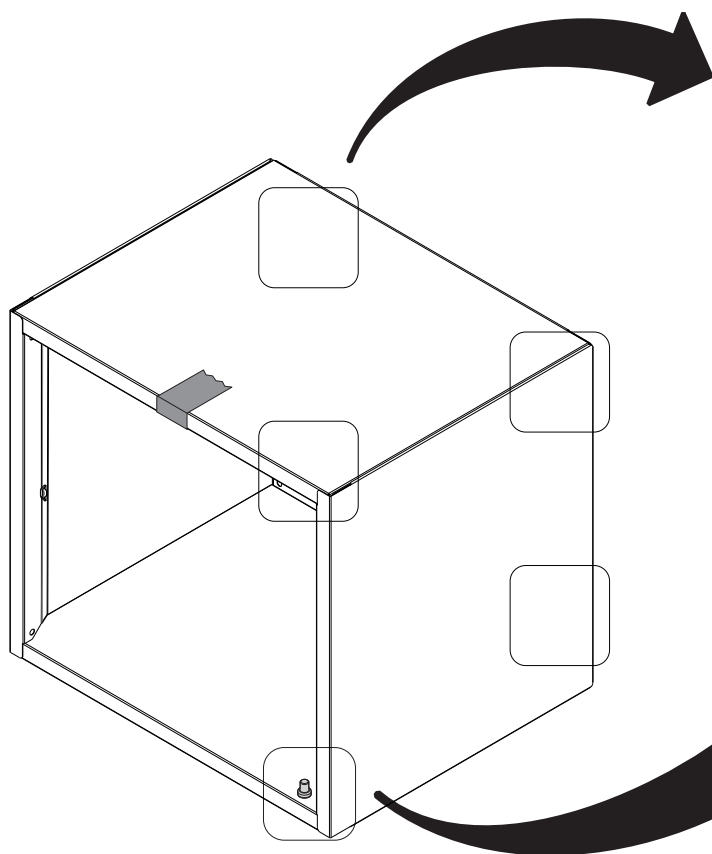
3 - Break the bushing's rods



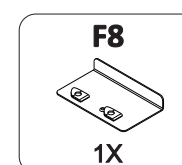
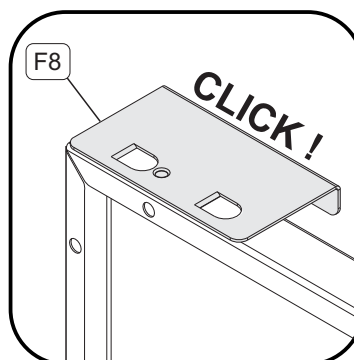
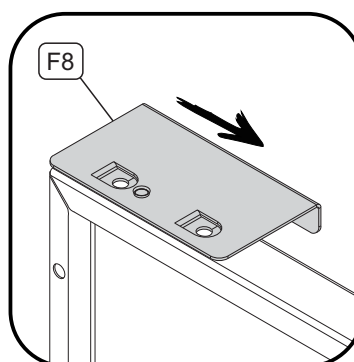
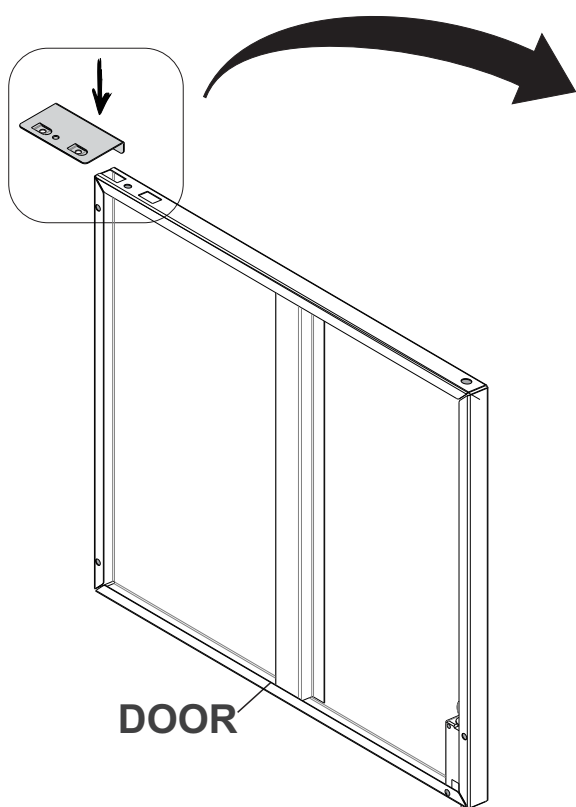
- 1 - Position cabinet through the **F2** screws that are already attached to the wall.
- 2 - Insert screw **F2** through part **BACK**.
- 3 - Turn the screw using the **F3** part clockwise.



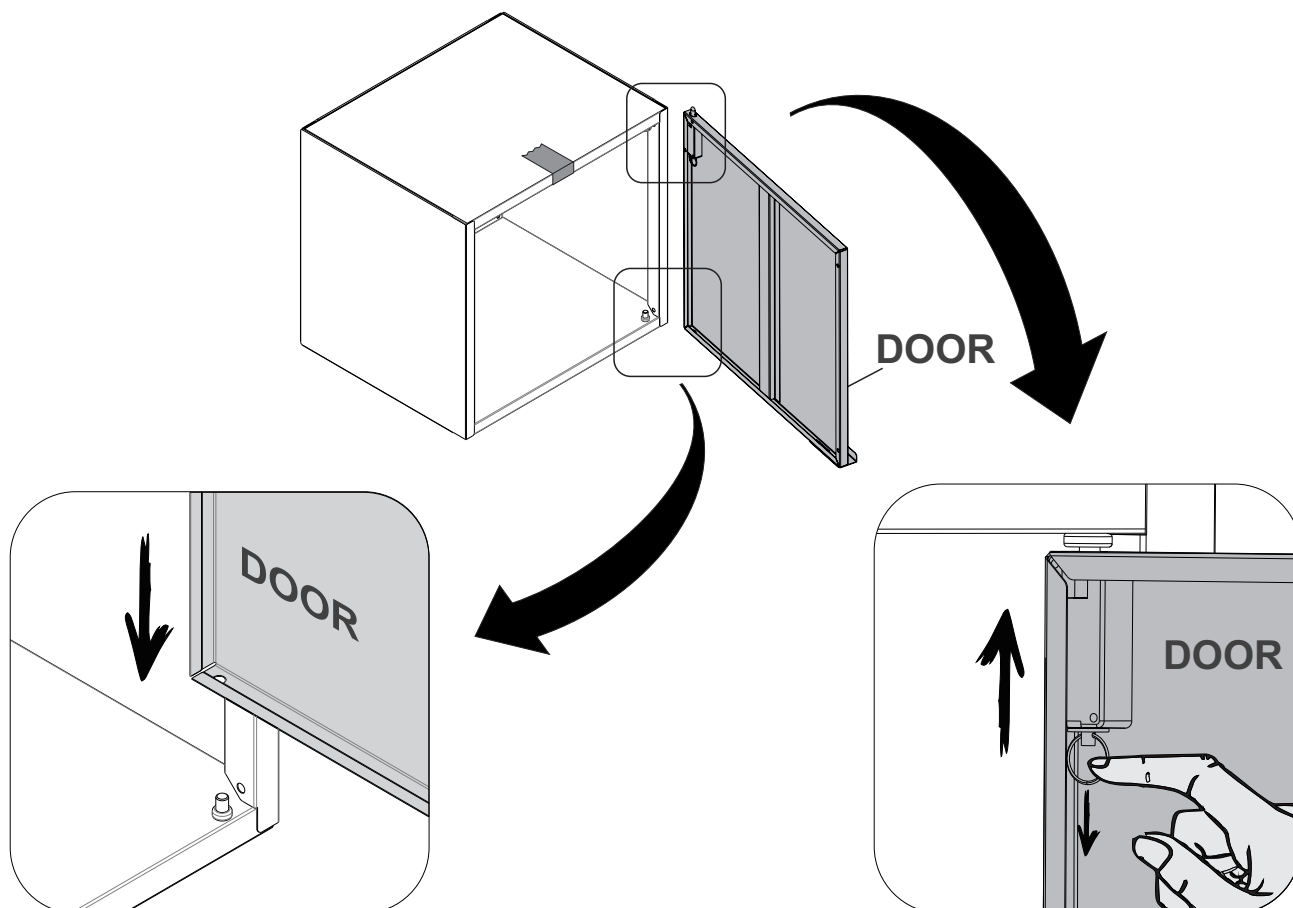
- 1 - Press part **F4** against the heads of the **F2** screws.
- 2 - Insert **F5** into the hole in part **CEILING**.



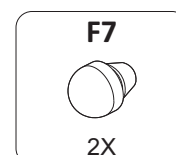
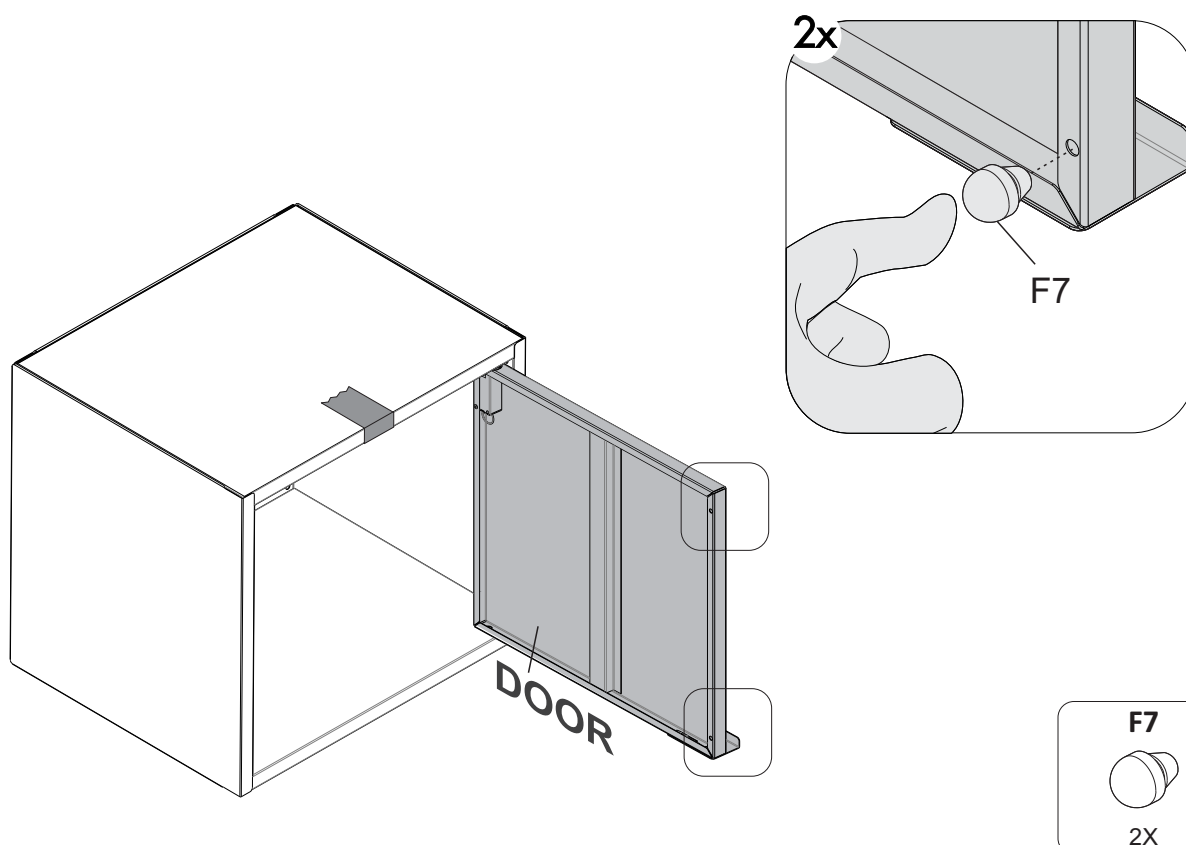
- 1 - Attach the **F8** handle to the **DOOR** as indicated below



- 1 - Attach part **P6** to the bottom of the cabinet through part **F6**
- 2 - Finish engaging part **DOOR** through the pivoting wrench as shown below.



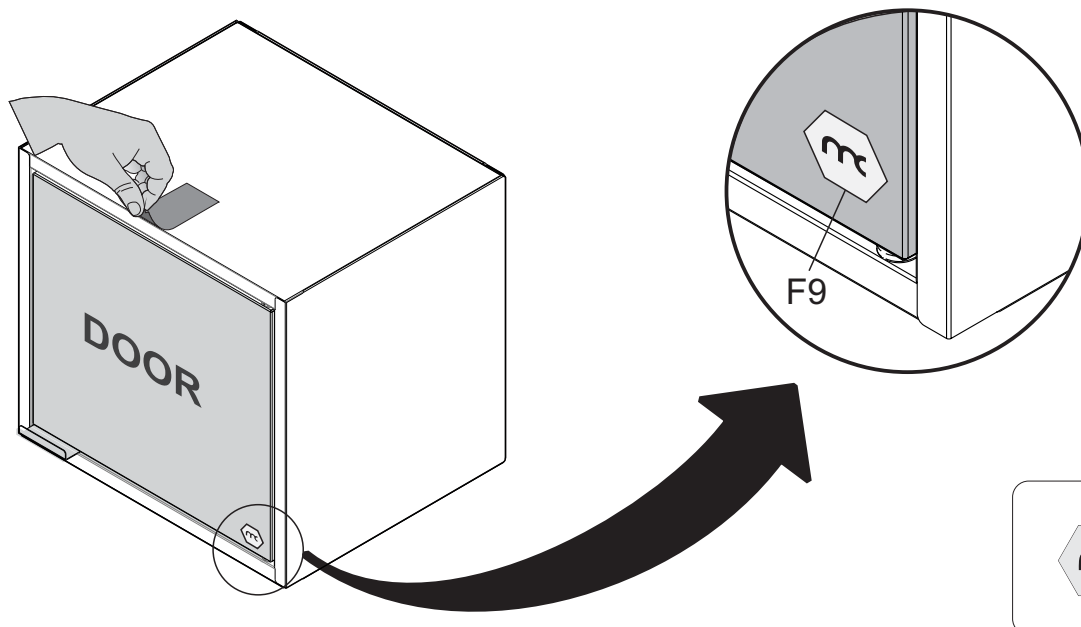
- 1 - Attach the **F7** into the **DOOR** holes..





IMPORTANT: REMOVE THE RIBBON TO FINISH THE ASSEMBLY

1 - Glue **F8** to part **DOOR** in the indicated area.



TAKING GOOD CARE OF YOUR CABINET

Cleaning and caring instructions:

- Avoid dragging objects on top of the cabinet. They might scratch the finishing.
- Only non-abrasive natural chemical products are recommended to clean your cabinet. Simply wipe the cabinet down with a wet cloth to remove the cleaning product excess.
- Never clean the cabinet with scouring powders, steel scrubber pads or any other product which can scratch its surface.
- Chemical products are not recommended.
- Cabinet surfaces should not be covered with colored plastic or paper sheets.
- Acid substances like salt, onion, ketchup and mustard must remain properly stored in sealed containers.
- Avoid the direct contact of water with other surfaces than the sink, as the humidity can affect the durability of the cabinets.
- Avoid cabinets exposure to direct Sun light. Drapers suggested.
- For technical assistance outside Brazil, please, contact the store where you purchased your product.
- This guidance should be saved for future reference, if necessary.

BEWARE: Do not use a damp cloth to clean the cabinet. Excessive moisture can damage its surface.

ATTENTION

To avoid serious or irreparable damage to the product, follow the instructions carefully.



WARRANTS TERMS

This product has the guarantee for a period of twelve (12) months, this limited warranty is effective from the date of the original consumer purchase. Proof of original purchase date is required to obtain service or replacement under this limited warranty. Once the defect of manufacture has been verified, the consumer should contact the store where he purchased the product. In the warranty period, any defective parts will be replaced free of charge by another of the same line and model. The installation and assembly in the residence of the customer is not the responsibility of the factory or the store. The assembly must correctly follow the instructions inside the packaging of each module.

ITEMS EXCLUDED FROM WARRANTIES

This limited warranty does not cover:

1. In-home service including, but not limited to, service calls to correct the installation of any Manhattan Comfort Smart Diy products or to instruct the consumer on how to use or install them.
 2. Damage resulting from improper handling or shipping of products, or products damaged by accident, alteration, misuse, abuse, fire, flood, improper installation, acts of God, neglect, corrosion, modification or mishandling.
 3. All travel, transportation, shipping or freight fees to deliver replacement products or to return defective products.
 4. Factory specified replacement parts or product replacement when your product is used in other than normal, single-family household use, such as a commercial environment or handled in a manner contrary to published user or operator instructions and/or installation instructions.
 5. Aesthetic damages including scratches, dings, dents or cracks that do not affect the structural or functional capability of the product.
 6. Any labor costs during the limited warranty period.
 7. Damage resulting from improper loading beyond the specified maximum weight capacity outlined in the assembly instructions provided with the product including overloading of hooks, baskets, shelves, cabinets, and other Manhattan Comfort Smart Diy accessories used with the product.
 8. Surfaces damaged due to chemical interaction resulting in corrosion of paint or metal.
- The cost of repair or replacement under these excluded circumstances shall be borne by the customer.

DISCLAIMER OF IMPLIED WARRANTY

Implied warranties, including any implied warranty of merchantability or implied warrant of fitness for a particular purpose, are limited to one year or shortest period allowed by law.

LIMITATION OF REMEDIES; EXCLUSION OF INCIDENTAL AND CONSEQUENTIAL DAMAGES

Your sole and exclusive remedy under this limited warranty shall be product repair as provided herein. Manhattan Comfort Smart Diy shall not be liable for incidental or consequential damages.



MANHATTAN
COMFORT



Stuck? Questions? We are here to help.