



LHBS Surface Mount Installation

IMPORTANT SAFETY INSTRUCTIONS

- When using product, basic precautions should always be followed, including the following:
- Heed all warnings, including below warnings AND those included on product.
- Save these instructions and warnings.
- Your fixture is prewired and preassembled for easy installation.
- Disassembling your fixture will void the warranty.

WARNING

- Risk of Fire, Electrical Shock, Cuts or other Casualty Hazards-Installation and maintenance of this product must be performed by a qualified electrician. This product must be installed in accordance with the applicable installation code by a person familiar with the construction and operation of the product and hazards involved.
- Risk of Fire and Electric Shock- Make certain power is OFF before starting installation or attempting any maintenance. Disconnect power at fuse or circuit breaker.
- Risk of Fire- Minimum 90°C supply conductors.
- Risk of Burn- Disconnect power and allow fixture to cool before handling or servicing.
- Risk of Personal Injury- Due to sharp edges, handle with care.
- Failure to comply with these instructions may result in death, serious bodily injury and property damage.

WARNING: FCC Regulations state that any unauthorized changes or modifications to this equipment not expressly approved by the manufacturer could void the user's authorization to operate this equipment.

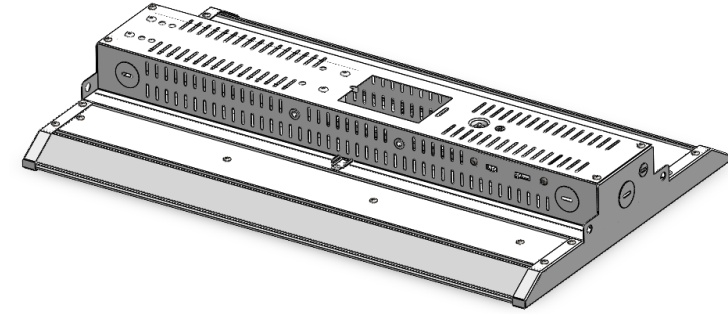
CAUTION

- Connect fixture to power source noted on product identification label. Any other connection voids the warranty.
- Fixture should be installed by persons with experience wiring or by a qualified electrician. The electrical system, and the method of electrically connecting the fixture to it, must be in accordance with the National Electrical Code and local building codes.
- This device complies with the FCC Rules.
- Operation is subject to the following two conditions
 - 1) This device may not cause harmful interference, and
 - 2) This device must accept any interference received, including interference that may cause undesired operation
- This equipment has been tested and found to comply with the limits for a Class B digital device, pursuant to Part 15 of the FCC Rules. These limits are designed to provide reasonable protection against harmful interference in a residential installation. This equipment generates, uses and can radiate radio frequency energy and if not installed and used in accordance with the instructions, may cause harmful interference to radio communications. There is no guarantee that interference will not occur in a particular installation. If this equipment does cause harmful interference to radio or television reception, which can be determined by turning the equipment off and on, the user is encouraged to try to correct the interference by one or more of the following measures:
 - Reorient or relocate the receiving antenna.
 - Increase the separation between the equipment and receiver.
 - Connect the equipment into an outlet on a circuit different from that to which the receiver is connected.
 - Consult the dealer or an experienced radio/TV technician for help.

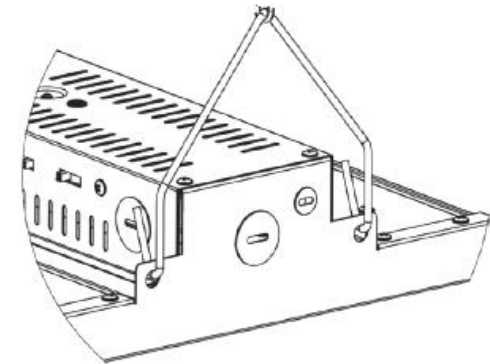
LHBS Surface Mount Instruction



1. Install screw hooks into ceiling. (Use wall anchors if going into sheetrock ceiling)

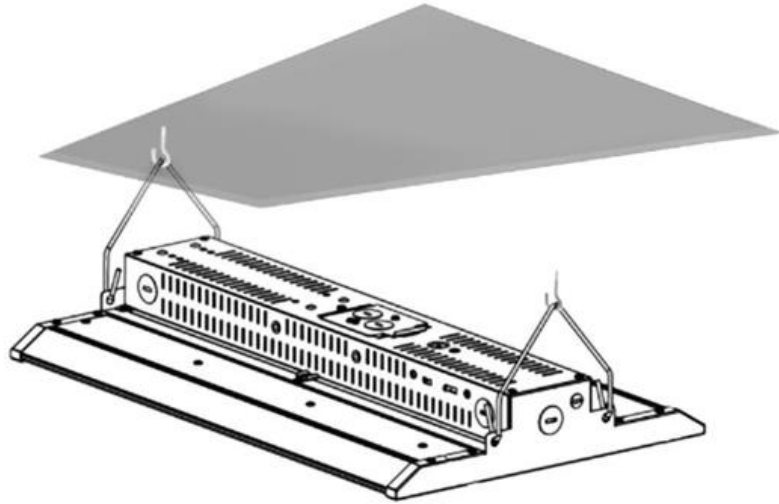


2. Remove the access plate.

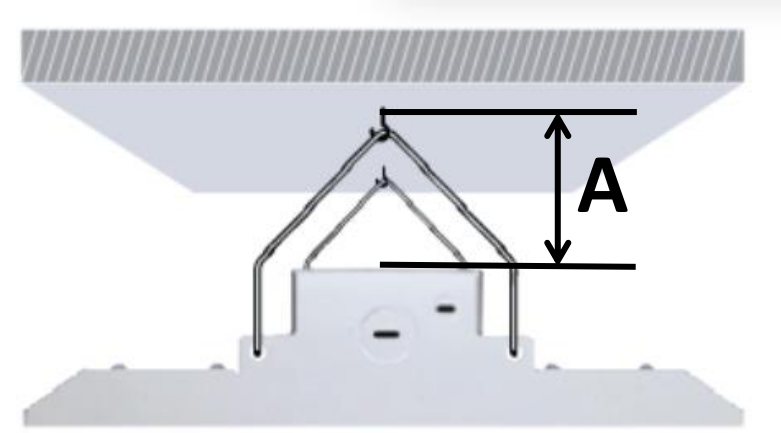


3. Remove knockout from access plate and install grommet. Place insulated wire through grommet.

4. Make sure the V-hangers (2) are fully engaged into the slots on the top channel.



5. Place fixture and V-hanger onto hook.

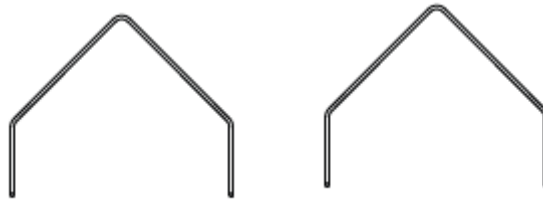


$A = 2.5''$

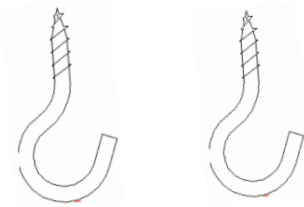
6. Finish wiring inside junction box located cover (not included) onto junction box. Put access plate back and Turn-on power.

NOTE: Product is not IC rated and can not mount directly on ceiling due to higher wattage. Needs to keep space between ceiling and fixture for proper heat dissipation

Accessories required for LHBS Surface Mount



V Hangers*2 (included)



Screw Hook*2 (not included)



Wall anchors*2 (not included)

Note: Select screw hook which can take weight up to 10 lbs.

Product weight is 7lbs.

