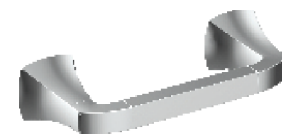




Model No. : 182-6608 Polished Chrome
182-6609 Brushed Nickel
182-6610 Oil-Rubbed Bronze



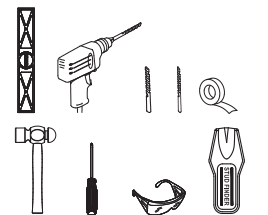
Cardania Tissue Holder

1

Parts Diagram / List

Tools

- Level
- Power Drill
- 1/4" Drill Bit
- 1/16" Drill Bit
- Masking Tape
- Pencil
- Hammer
- Phillips Screw Driver
- Safety Glasses
- Stud Finder

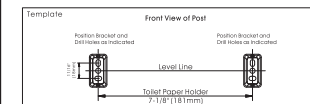
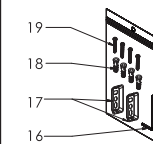
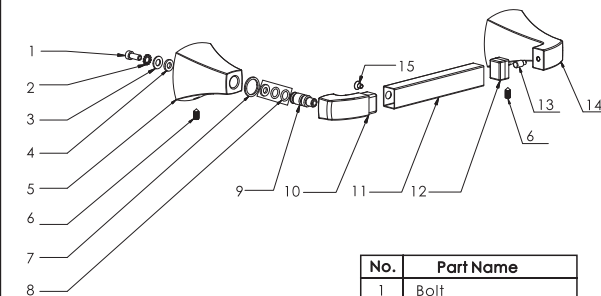


Maintenance

Your new Bath Accessory is designed for years of trouble-free performance. Keep it looking new by cleaning it periodically with a soft cloth. Avoid abrasive cleaners, steel wool and harsh chemicals as these will dull the finish and void your warranty.

2

Parts Diagram / List

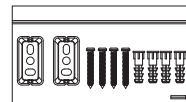


20

No.	Part Name
1	Bolt
2	Locking Washer
3	Washer
4	Anti-attrition Ring
5	Left Base
6	Set Screws
7	Anti-attrition Washer
8	O-Rings
9	Connector Post
10	Left Base Post
11	Stainless Steel Tube
12	Plastic Bushing
13	Tube Post
14	Right Base
15	Stainless Steel Tube Set Screw
16	Allen Wrench
17	Mounting Brackets
18	Insert Anchors
19	Mounting Screws
20	Template

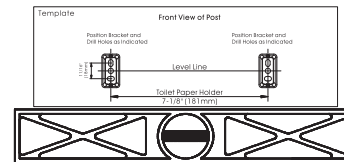
3

Installation Instructions



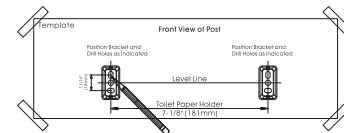
Step 1

Locate mounting hardware before throwing away any packaging.



Step 2

Use the stud finder to locate the stud to determine which mounting method is needed. Place the template on the wall in the desired location and make sure it is level, then tape to the wall.



Step 3

Mark the mounting screw holes through the template with the pencil. (Once holes are marked, you can remove the template)

4

Installation Instructions

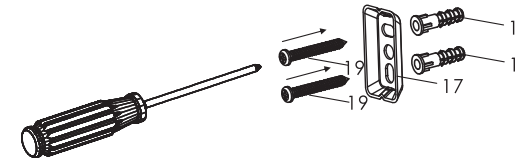
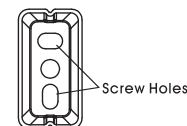


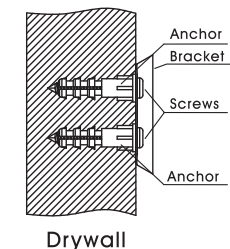
Figure 1

Drywall Installation

Front View



Side View



Step 4a – Drywall or Ceramic Tile Installation
In the marked spots drill 1/4" holes in the wall, then insert the insert anchors (18) in the holes, use not hammer to tap them into place. (Be sure not to hit them too hard)

5

Installation Instructions

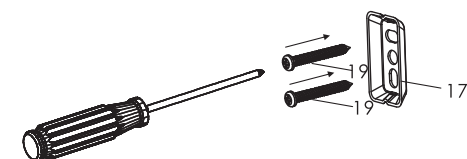
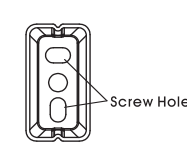


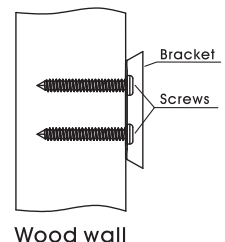
Figure 2

Wood Wall Stud Installation

Front View



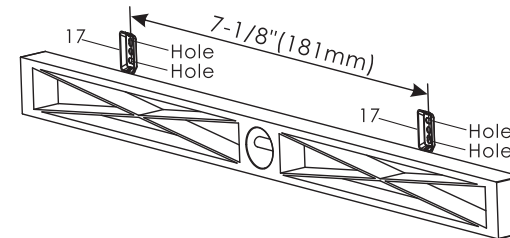
Side View



Step 4b – Wood Wall Stud Installation
Drill 1/16" holes in the marked spots, be sure to keep the drill level. Insert anchors will not be needed.

6

Installation Instructions



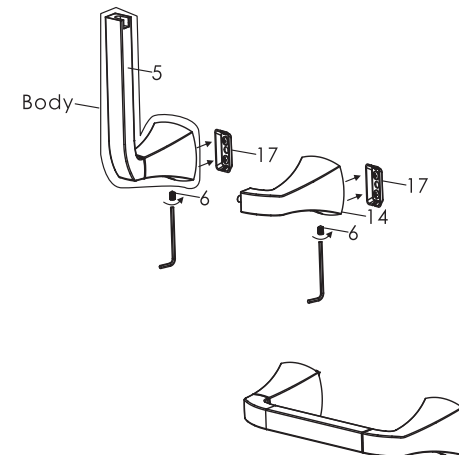
Step 5

Dry Wall Installation: Attach the mounting brackets (17) using the mounting screws (19) to the insert anchors (18). See Figure 1 For example.

Wood Wall Stud Installation: Attach the mounting brackets (17) using the mounting screws directly into the stud. See Figure 2 for an example.

7

Installation Instructions



Step 6

A - Position body over mounting bracket (17) and tighten set screw (6).

B - Position right base (14) over mounting bracket (17) and tighten set screw (6).

8



LIMITED LIFETIME WARRANTY

Compass Manufacturing International warrants to the original consumer purchaser that the faucet be free from defects in material and workmanship for as long as the original consumer purchaser owns the home in which the faucet was first installed.

In the event that Freendo bathroom accessories are used in a Commercial Application, this warranty is limited for a period of 5 years, unless otherwise specifically stated in the catalog and/or price book.

Compass Manufacturing International will replace, free of charge, during the applicable warranty period, any part or finish that proves defective in material and/or workmanship under normal installation, use and service. This warranty shall not apply to goods which have been subject to accidents, negligence or improper installation. Compass Manufacturing International will not be liable for other damages or losses, including, but not limited to: labor charges and/or damages incurred in installation, repair or replacement as well as any other kind of loss or damage. Proof of purchase from the original consumer purchaser must be made available for all warranty claims.

Compass Manufacturing International recommends using a professional plumber for all installation and repair. Compass Manufacturing International will, at its discretion, provide new or equivalent replacement parts for any product that proves to be defective under normal usage and service. Replacement parts may be obtained by emailing the address below, calling the number below or by writing to:

Compass Manufacturing International
Freendo Product Service
6702 Enterprise Drive
Louisville, KY 40214
800.626.3525
warranty@cmiproduct.com

Revised 5/31/17

warranty@cmiproduct.com

© Compass Manufacturing International

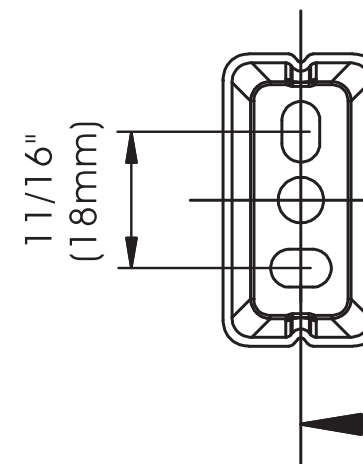
800.626.3525

9

Template

Front View of Post

Position Bracket and
Drill Holes as Indicated



Level Line

Tissue Holder

7-1/8" (181mm)

Position Bracket and
Drill Holes as Indicated

