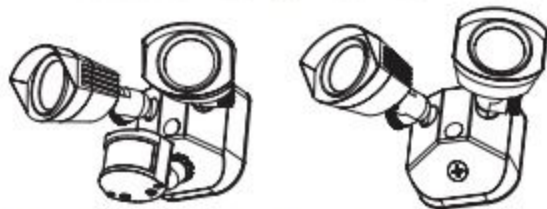


LED DUAL HEAD SECURITY LIGHT

INSTALLATION AND SAFETY INSTRUCTIONS

IMPORTANT: Read before installing fixture. Retain for future reference.



SAFETY: This fixture must be wired in accordance with the National Electrical Code and applicable local codes and ordinances. Proper grounding is required to insure personal safety. Carefully observe grounding procedure under installation section.

WARNING: Make certain power is OFF before starting installation or attempting any maintenance. Risk of fire/electric shock. If not qualified, consult an electrician.

CAUTION: For proper weatherproof function all gaskets must be seated properly and all screws inserted and tightened firmly. Apply weatherproof silicone sealant around the edge of the Back Box and/or Junction Box. This is especially important with an uneven wall surface. Silicone all plugs and unused conduit entries.

CLEANING & MAINTENANCE

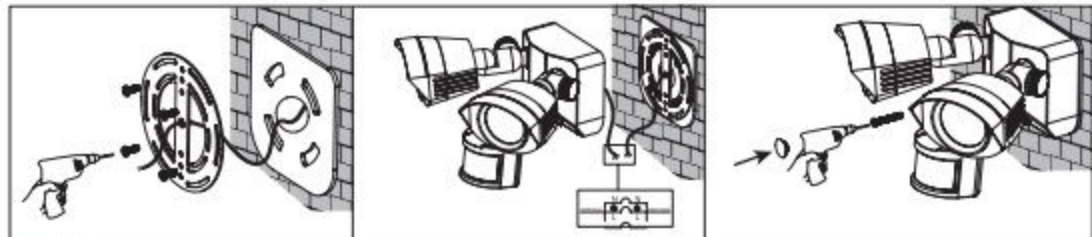
CAUTION: Be sure fixture temperature is cool enough to touch. Do not clean or maintain while fixture is energized.

1. Clean glass lens with non-abrasive glass cleaning solution.
2. Do not open fixture to clean the LED. Do not touch the LED.

INSTALLATION

Mounting hardware included

1. Remove fixture components and parts pack Check to ensure all parts are included.
Note: Account for small parts and destroy packing material, as these may be hazardous to children.
2. **Turn OFF Power at circuit breaker box. CAUTION:** Do not rely on wall switch alone to turn off power.
Note: Fixture is intended for Eave or Wall mount above 4 ft. (1,2m) only. Do not mount on ground!
3. Use screw to fix the mounting plate and foam in the wall mounting box of the order shown in the drawing.
4. Connect the lamp wiring as drawing. See "wiring".
5. Fix the lamp on the mounting plate with a screw and cover the gap between the base and the wall with a silicone plug and seal with glue.



WIRING

Ground fixture. Use wire nut to connect the (copper) house supply ground wire and the (green) fixture ground wire.

Note: If house wiring does not include a ground wire, consult your local electrical code for approved grounding methods. For proper connection, place wire nut over wires and twist clockwise until tight.

1. Connect supply wires. Use wire nut to connect the black fixture wire to the black power supply wire and the white fixture wire to the white (neutral) supply wire.

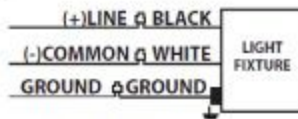
Note: Lamp heads must be positioned above motion sensor head and controls on motion sensor must face the ground.

2. Aim lamp heads and install optional visors. Loosen adjustment knobs and aim lamp heads.

CAUTION: Risk of Shock: Aim lamp heads at least 20° down below horizontal in order to prevent water from accumulating inside lens.

After lamp heads are positioned as desired, align the optional visor over the front of the lamp head and secure by tightening set screw on visor.

3. Turn on electricity at fuse or circuit breaker box and verify success of installation.
4. Apply silicone caulking (not included) around the perimeter of the fixture where it contacts the mounting surface for moisture seal. After installing your motion activated light you are ready to set/aim the motion sensor. Make sure the wall switch is in ON position.



TROUBLESHOOTING

1. Check your power source.
2. Check electrical connections.
3. Check that the photo cell or motion sensor is working properly (if so equipped).