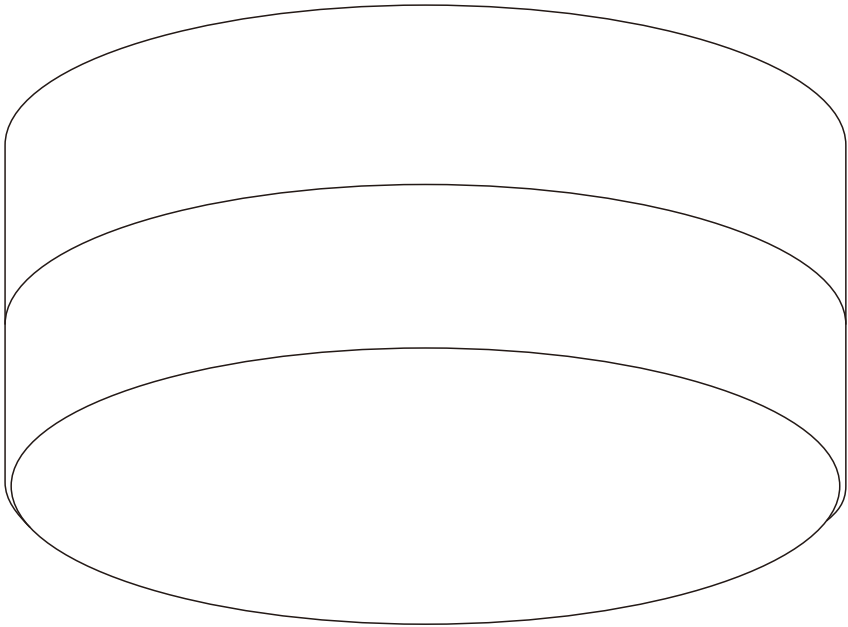



# USE AND CARE GUIDE

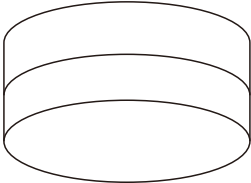
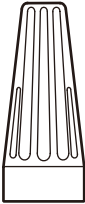
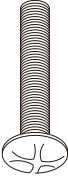


———— CEILING LAMP ————

## Pre-Installation

### PACKAGE CONTENTS

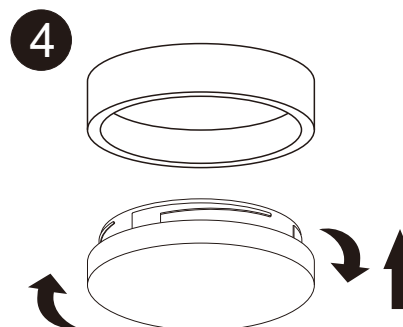
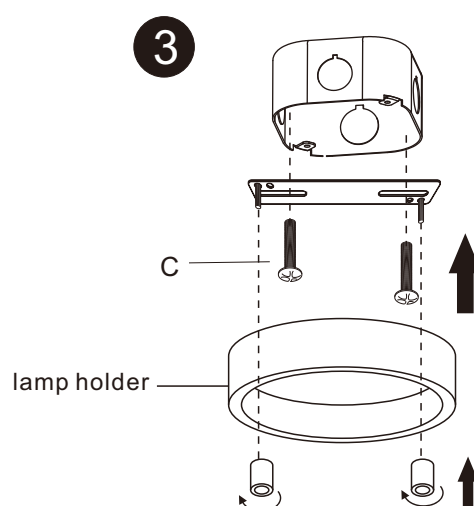
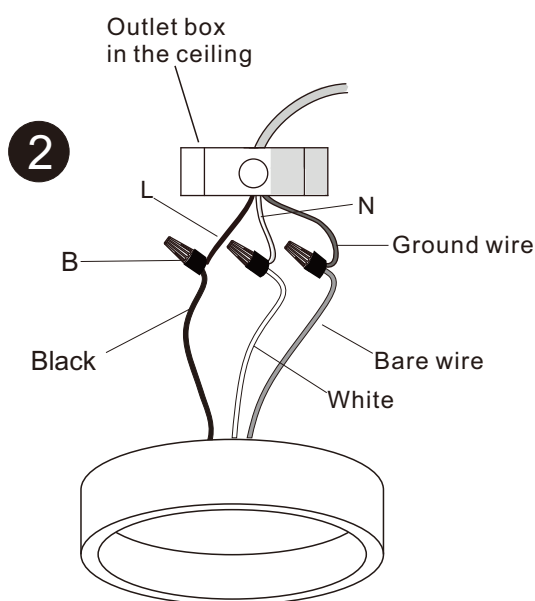
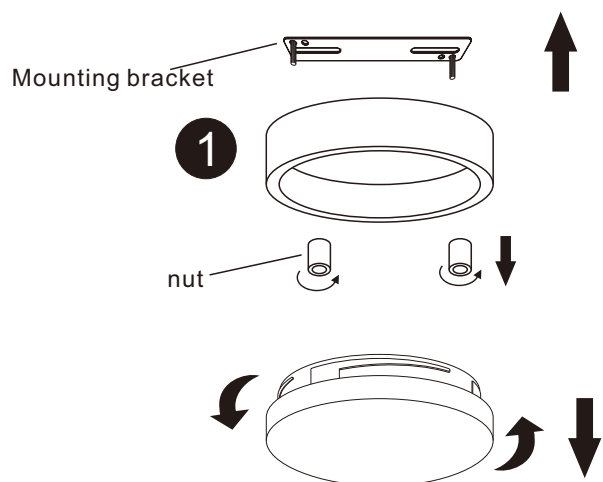
 NOTE: Hardware not shown to actual size.

								
A	Fixture	1	B	Plastic wire nut	3	C	Mounting screws	2

# Installing the Light

**WARNING:** To avoid possible electrical shock, turn the electricity off at the main fuse box before wiring. If you feel you do not have enough electrical wiring knowledge or experience, contact a licensed electrician.

- Rotate counterclockwise to remove the lampshade. Rotate the nut and remove the nut and mounting bracket.
- Connect the wires with a wiring nut(B) as shown. Use electrical tape to secure each wiring nut(B).
- Install the mounting bracket with two screws(C). Then use nuts to secure the lamp holder onto the mounting bracket.
- Install the lampshade clockwise.



## Tips

- For daily cleaning, you can use a damp cloth to wipe the surface without using corrosive chemicals.
- Electrical products must be discarded in an environmentally friendly area.