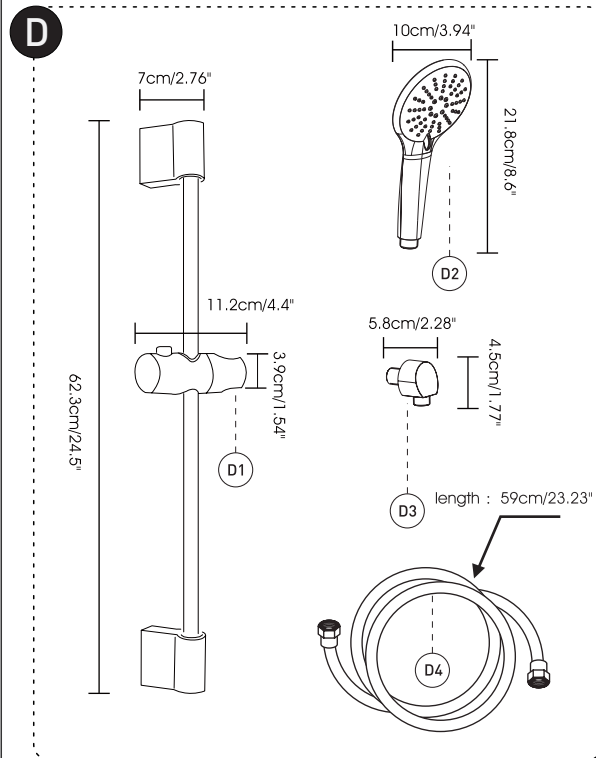
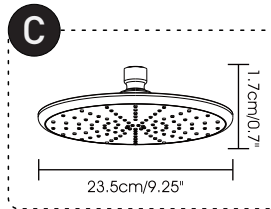
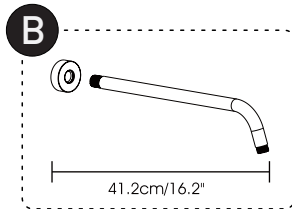
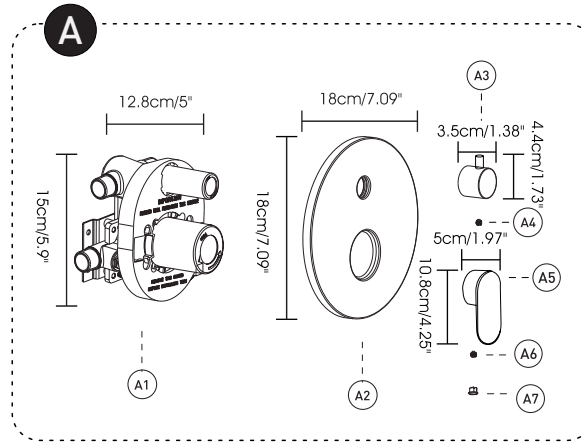
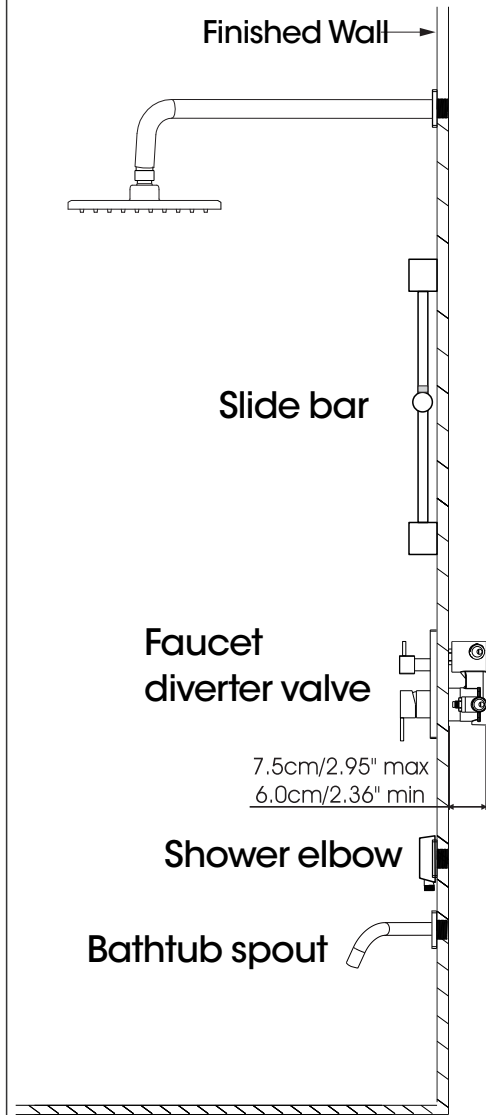
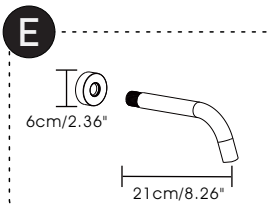


PRODUCT DRAWING



No.	Description
A	Pressure balanced diverter valve
A-1	shower valve body
A-2	Shower Valve Panel with sealjoint
A-3	Diverter knob kit
A-4	Allen screw
A-5	Shower valve handle
A-6	Allen screw
A-7	Trim cap
B	Shower arm
C	Shower head
D	Handheld Shower Kit with Flexible Hose
D-1	Slide bar
D-2	Handheld Shower
D-3	Shower elbow
D-4	Shower hose
E	Bathtub spout



SHOWER SYSTEM FAUCET

Installation instruction



MB / BN / BG / CH / ORB

CARE INSTRUCTIONS

Rinse the product with clear water. Dry the product with a soft cloth.

DO NOT:

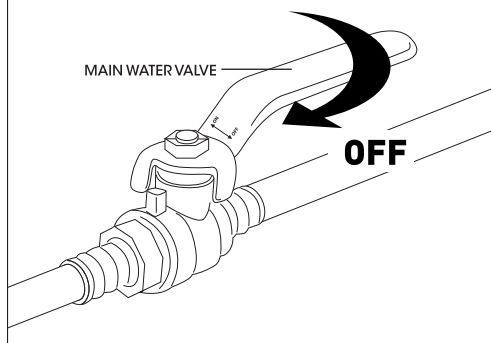
Use abrasive cleansers, cloths, or paper towels. Use any cleaning agents containing acid, polish, wax, alcohol, ammonia, bleach, solvent or any other corrosive or harsh chemical cleansers.

! IMPORTANT

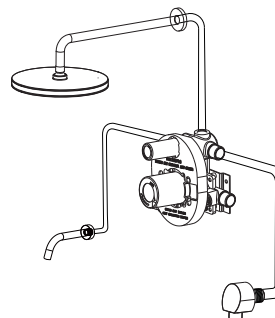
We recommends using a professional plumber for all installtion and repair. Please inform yourself about the US plumbing code`s regulations and your local municipality plumbing codes before installlation.the us plumbing code requires the installation of urge arresting devices to eliminate water hammering.allow an adequate opening in order to easily access connections or other plumbing devices for maintenance or repair.

INSTALLATION STEPS

BEFORE YOU BEGIN



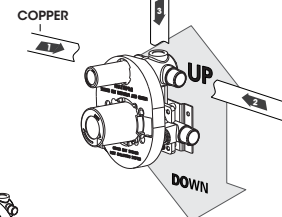
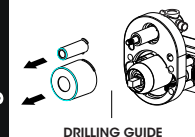
INSTALLATION WAY



Rough-In-Installation primaire

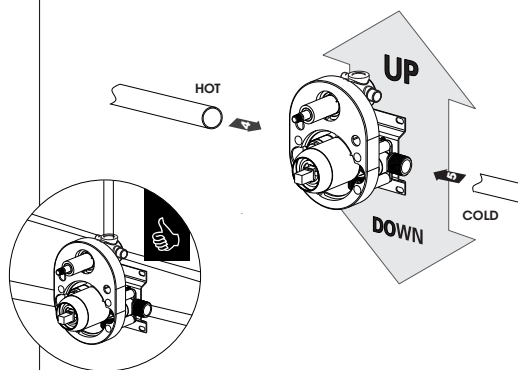


ATTENTION
WHEN USING A HANDSHOWER, IT NEEDS TO BE CONNECTED TO THE TOP OUTLET

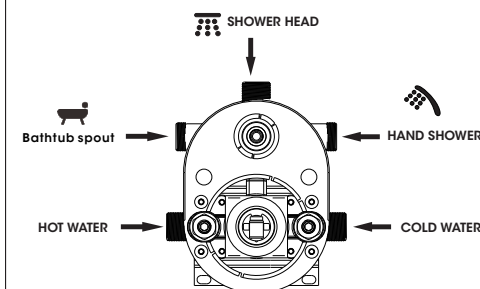


1

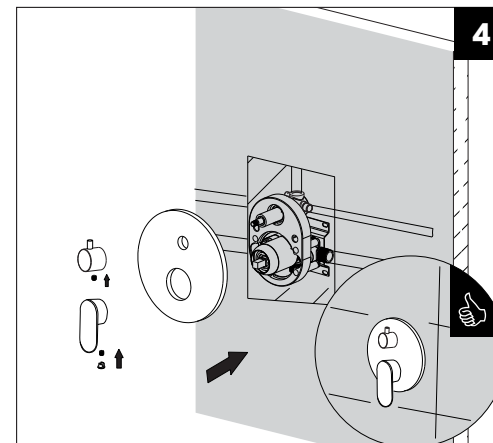
2



3

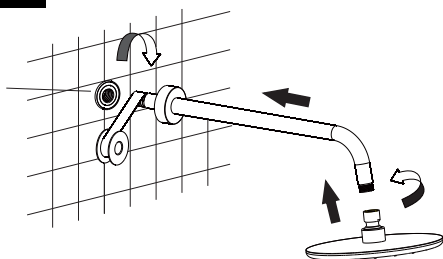


4



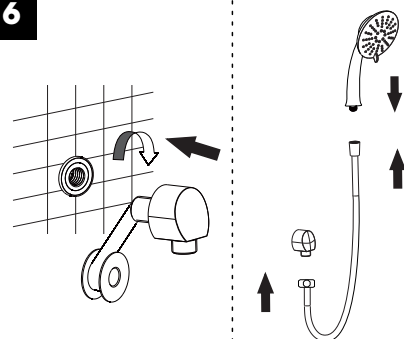
HEAD SHOWER

5



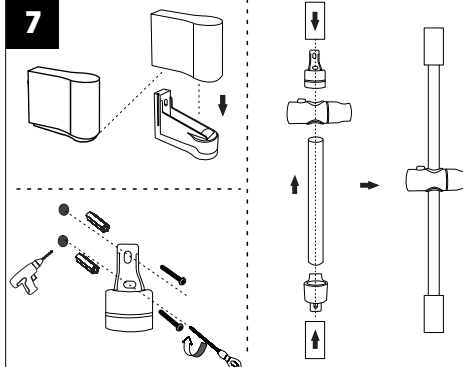
HAND SHOWER

6



HAND SHOWER

7



Bathtub spout

8

