

BELL+HOWELL **SOCKET FAN LIGHT™**
2-IN-1 LED LIGHT & FAN

3 FAN SPEEDS
LIGHT SETTINGS

1000
LUMENS

15.7"
DIAMETER

Great for all rooms around the house, including: bedrooms,
basements, attics, boiler rooms, garages & more



Socket Extender
Included



E26
MEDIUM BASE



NO WIRES
OR BATTERIES
REQUIRED



REMOTE
CONTROL
& BRACKET



LED
TECHNOLOGY

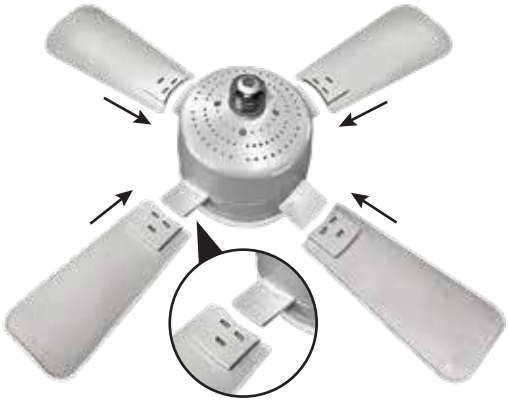
3500
KELVIN
WARM
LEDs

INSTRUCTIONS

ASSEMBLY

NOTE: Fan blades come packed separately from the main power unit. Assembly is required.

Insert each blade into the tab until it clicks in, as shown on right. The blades can only be inserted one way.



INSTALLATION No tools required.

Turn the power OFF using the wall light switch for that socket before installing the unit.

EQUIPPED WITH SAFETY OFF FEATURE

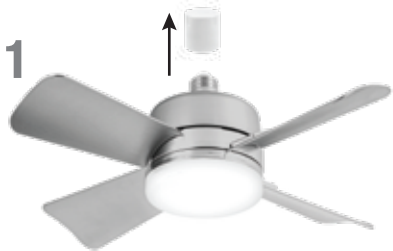
If the blades come in contact with an object during operation, the fan will stop.

To restart:

Option A: Turn the power OFF using the wall light switch for that socket.

Wait for 4-5 seconds, then switch it back on. Last used fan/light setting will resume.

Option B: Just wait 35 seconds before using the remote control again.



Remove the protective cap.



While holding the unit as shown above (holding part A and part B at the same time), twist the Socket Fanlight clockwise to install it. Do not overtighten, but make sure the fan is fully secured.



If needed, use the socket extender. Screw in clockwise making sure the fan is fully secure. Then, follow step 2 to install the Socket Fanlight unit.

4

Second socket extender is for use only if there is not enough airflow when using the first socket extender.



Connect both socket extenders together and screw in clockwise until tightened.



Connect to light socket and screw it in clockwise.

5

Turn the Socket Fanlight ON using the wall light switch for that socket. The light will turn on High setting, fan will be off.

To turn on the fan or change the light settings use the included remote. Refer to "USING THE REMOTE" section below.

Use the wall light switch to turn the unit OFF (fan and light).

USING THE REMOTE Remote working distance: up to 16 feet (5m)

Remove the plastic tab from the battery compartment to activate the CR2025 battery. Refer to Battery Placement instructions when need to replace the battery.

NOTE: Each time a button is pressed on a remote, a short beep will sound.



- Go back to the default setting (Light ON High with Fan OFF)
- Turns unit OFF (fan and light).
- Turns fan on at low setting. Keep pressing button to cycle through other settings (Low/Medium/High/OFF).
- Default light setting is High. Keep pressing button to cycle through other settings (Low/Medium/High/OFF).

IN CASE THE REMOTE IS MISPLACED

Socket Fanlight can be operated via wall light switch (Memory or Default Setting) in case the remote is misplaced or lost.

MEMORY FEATURE (wall light switch only):

- 1. If you turn the unit off via a wall light switch, the last Fan/Light setting will be saved. For example: if the Light was set on High brightness with Fan on Low speed, the same setting will resume when you turn the unit back on using the wall light switch.
- 2. Once you turn the wall light switch back on, the default setting (Light on High/Fan OFF) will briefly engage, followed by the last fan/light setting. Please allow for approximately 5-8 seconds for the memory to restore.

NOTE: If you turned off both, the Light and Fan via remote, when the wall light switch is turned back on, the default setting (Light on High/Fan OFF) will be used. Contact customer service at 1-800-423-4248 for a replacement remote, plus S&H.

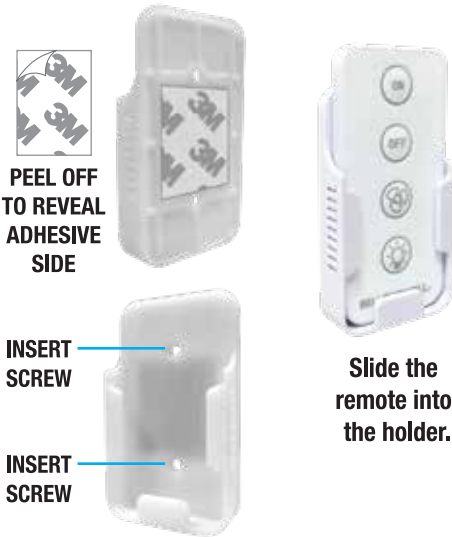
MOUNTING OF REMOTE HOLDER

Using 3M tape (included):

- Peel off backing and place it with the adhesive side down on the back of the holder. Press down for a few seconds.
- Peel off the other side and place on the desired smooth surface. Press the holder firmly onto the surface for a few seconds.

Using screws/anchors (included):

Insert each screw into the openings of the remote holder. Tighten to secure.



REMOTE BATTERY PLACEMENT

- 1. Simply pull the battery compartment tray to open it.
- 2. Insert a new 1 CR2025 battery with a positive “+” facing up.
- 3. Once the battery is inserted, push the tray back in until it is fully inserted.



IMPORTANT SAFEGUARDS:

- KEEP FAN OUT OF REACH OF CHILDREN.
- WARNING: TO REDUCE THE RISK OF PERSONAL INJURY, DO NOT BEND THE BLADE BRACKETS WHEN INSTALLING THE BRACKETS, BALANCING THE BLADES, OR CLEANING THE UNIT. DO NOT INSERT FOREIGN OBJECTS IN BETWEEN ROTATING FAN BLADES.
- CAUTION: TO REDUCE THE RISK OF INJURY TO PERSONS, INSTALL UNIT AT LEAST 8 FEET (2.43 M) ABOVE THE FLOOR.
- CAUTION: TO REDUCE THE RISK OF INJURY TO PERSONS, DO NOT INSTALL ADDITIONAL EXTENDER LESS THAN 9 FEET ABOVE THE FLOOR. EACH SOCKET EXTENDER ADDS 4.5 INCHES TO THE HEIGHT OF THE UNIT (TOTAL OF 9 INCHES). MAKE SURE THERE IS ENOUGH CLEARANCE AROUND THE UNIT.
- CONSULT A QUALIFIED ELECTRICIAN TO ENSURE CORRECT BRANCH CIRCUIT CONDUCTOR.
- THIS PRODUCT MUST BE INSTALLED IN ACCORDANCE WITH THE APPLICABLE INSTALLATION CODE BY A PERSON FAMILIAR WITH THE CONSTRUCTION AND OPERATION OF THE PRODUCT AND THE HAZARDS INVOLVED.
- THIS DEVICE CAN ONLY BE INSTALLED ON STATIONARY LIGHT SOCKET, CANNOT INSTALL ON ANY NON STATIONARY OR LOOSE SETTING LIGHT SOCKET.
- THIS DEVICE CANNOT BE INSTALLED ON A LOOSE SETTING LIGHT SOCKET.
- ALWAYS CHECK THAT THE THREADS INSIDE OF THE LIGHT SOCKET ARE IN GOOD WORKING CONDITION.
- ALWAYS MAKE SURE THE UNIT IS CONNECTED AND SCREWED IN TIGHTLY. TO ENSURE GOOD CONNECTION, TURN THE UNIT ON LOW SETTING TO TEST IT.
- TO REDUCE THE RISK OF ELECTRIC SHOCK, THIS UNIT MUST BE INSTALLED WITH AN ISOLATING WALL CONTROL/SWITCH.
- DUE TO SOCKET FANLIGHT HIGH INTENSITY LED BULBS, DO NOT STARE DIRECTLY INTO THE LED LIGHT.
- RISK OF ELECTRIC SHOCK - USE IN DRY LOCATION ONLY.
- SWITCH OFF THE POWER BEFORE INSTALLING THE UNIT.
- NEVER PLACE ANYTHING OVER THE FAN OR INTO THE UNIT BLADES WHEN IT’S RUNNING.
- USE IN OPEN LUMINAIRE ONLY.
- DO NOT USE WITH DIMMERS.
- DO NOT PLACE OBJECTS NEAR THE UNIT.
- ADDED WEIGHT OF THE DEVICE MAY CAUSE INSTABILITY OF A FREE STANDING PORTABLE LUMINAIRE.
- THIS DEVICE IS NOT INTENDED FOR USE WITH EMERGENCY EXITS.
- DO NOT OPERATE ANY APPLIANCE AFTER IT MALFUNCTIONS, OR IS DROPPED, OR DAMAGED IN ANY MANNER. RETURN APPLIANCE TO THE NEAREST AUTHORIZED SERVICE FACILITY FOR EXAMINATION, REPAIR OR ELECTRICAL OR MECHANICAL ADJUSTMENT.
- UNIT SHOULD BE TURNED OFF WHEN NOT IN USE OR DURING CLEANING. FAN HAS TO COME TO A COMPLETE STOP BEFORE HANDLING IT.

THE LEDs ARE NON REPLACEABLE.
FOR INDOOR USE ONLY

SPECIFICATIONS:

- 120V, 420mA, 29W
- 40 High Intensity LED Bulbs
- 1000 Lumens
- Suitable for E26 Light socket base

FCC STATEMENT

This device complies with part 15 of the FCC Rules. Operation is subject to the following two conditions: (1) This device may not cause harmful interference, and (2) this device must accept any interference received, including interference that may cause undesired operation.

WARNING: Changes or modifications to this unit not expressly approved by the party responsible for compliance could void the user’s authority to operate the equipment.

NOTE: This equipment has been tested and found to comply with the limits for a Class B digital device, pursuant to Part 15 of the FCC Rules. These limits are designed to provide reasonable protection against harmful interference in a residential installation. This equipment generates, uses and can radiate radio frequency energy and, if not installed and used in accordance with the instructions, may cause harmful interference to radio communications.

However, there is no guarantee that interference will not occur in a particular installation. If this equipment does cause harmful interference to radio or television reception, which can be determined by turning the equipment off and on, the user is encouraged to try to correct the interference by one or more of the following measures:

- Reorient or relocate the receiving antenna.
- Increase the separation between the equipment and receiver.
- Connect the equipment into an outlet on a circuit different from that to which the receiver is connected.
- Consult the dealer or an experienced radio/TV technician for help.

