

## KENSINGTON 42" LEFT OFFSET CABINET

# ARIEL

### BASE CABINET DIMENSIONS

42" W x 21.5" D x 33.5" H



### FEATURES

- Solid wood frame & plywood panels
- Dovetail drawers and joints
- Soft closing doors & drawers

### HARDWARE FINISHES\*



Brushed Nickel    Satin Brass    Matte Black    Polished Chrome

*Hardware comes preinstalled with the illustrated option.  
Other finishes are available on our online store if you prefer a different one.*

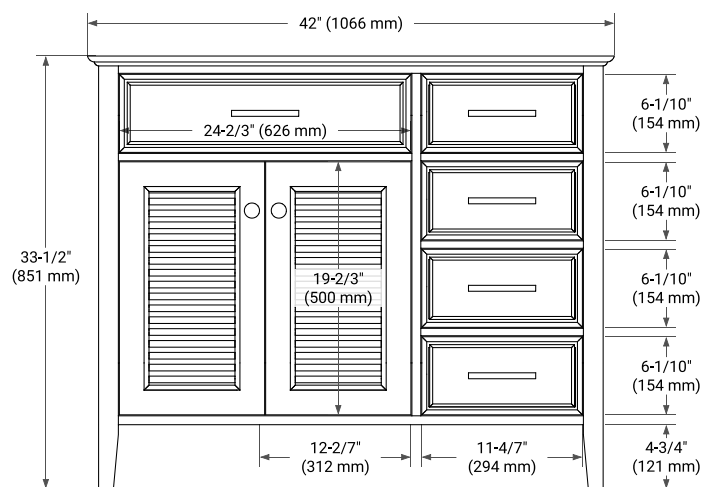
### AVAILABLE COLORS



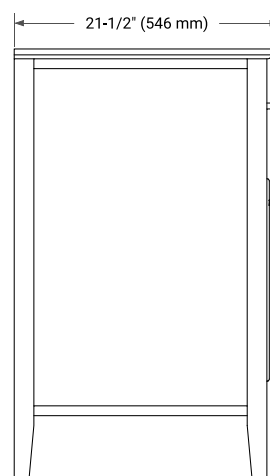
White

Grey

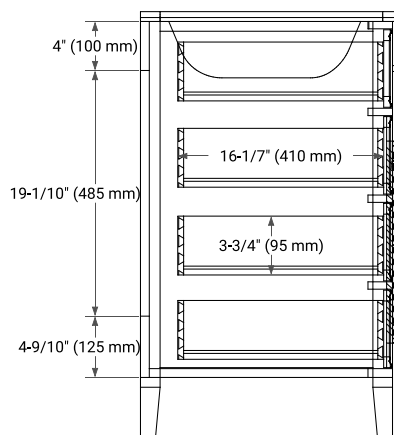
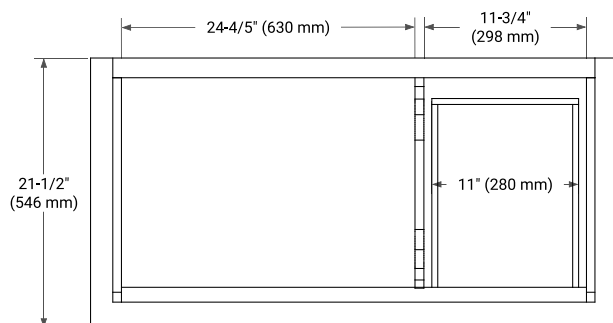
### FRONT VIEW



### SIDE VIEW



### PLAN VIEW



# 43" LEFT RECTANGLE SINK COUNTERTOP WITH 1.5 IN. THICKNESS

# ARIEL

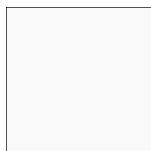
## OVERALL DIMENSIONS

43" W x 22" D x 1.5" H

## COUNTERTOP OPTIONS



Carrara Marble



White Quartz

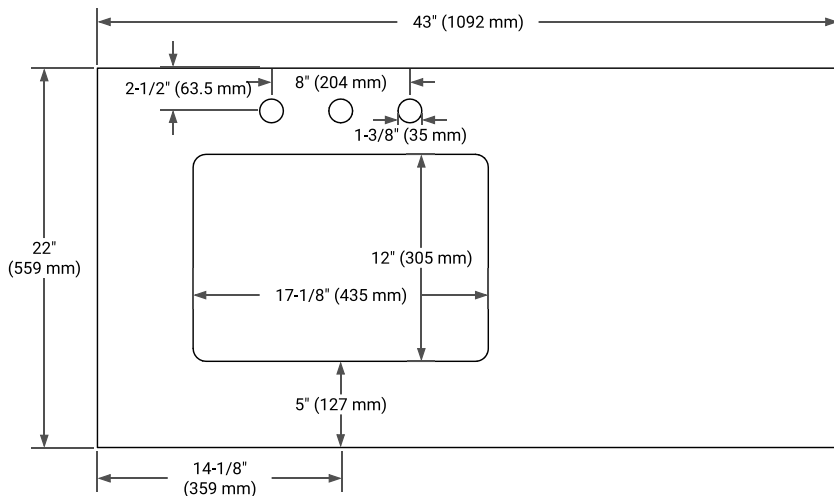
## FEATURES

- Solid countertop with mitered edges & seams
- Undermount white rectangular sink
- Pre-drilled for 8" widespread faucet

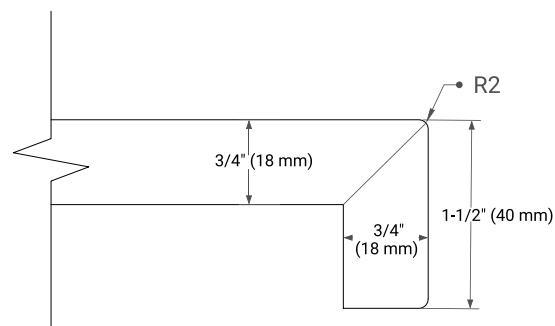
## INCLUDED

- Countertop
- Matching Backsplash
- Rectangle Sink

## COUNTERTOP PLAN VIEW



## EDGE SIDE VIEW



## THREE DIMENSIONAL COUNTERTOP VIEW

