

LED LIGHTSHOW INSTRUCTIONS

Congratulations! You are now the proud owner of a LED LIGHTSHOW. Please read the directions carefully before use.

SAFETY WARNING: Remove all plastic fasteners and tags. These are part of the packaging and should be discarded.

SAVE THESE INSTRUCTIONS — This manual contains important safety and operating instructions for power units.

WARNING

ELECTRIC PRODUCT. Keep away from children. Not recommended for children under 3 years of age. As with all electrical products, precautions should be observed during handling and use to reduce the risk of electric shock. If the supply cord is damaged, it must be replaced by the manufacturer, its service agent or similarly qualified persons in order to avoid a hazard.

WARNING

Strobe lights have been known to trigger seizures in people with photosensitive epilepsy.

IMPORTANT SAFETY INSTRUCTIONS WHEN USING ELECTRICAL PRODUCTS, BASIC PRECAUTIONS SHOULD ALWAYS BE FOLLOWED INCLUDING THE FOLLOWING:

READ AND FOLLOW ALL SAFETY INSTRUCTIONS

1. Do not use seasonal products outdoors unless marked suitable for indoor and outdoor use. When products are used in outdoor applications, connect the product to a Ground Fault Circuit Interrupting (GFCI) outlet. If one is not provided, contact a qualified electrician for proper installation.
2. This seasonal use product is not intended for permanent installation or use.
3. Do not mount or place near gas or electric heaters, fireplace, candles or other similar sources of heat.
4. Do not secure the wiring of the product with staples or nails, or place on sharp hooks or nails.
5. Do not let lamps rest on the supply cord or on any wire.
6. Unplug the product when leaving the house, when retiring for the night, or if left unattended.
7. This is an electric product-not a toy! To avoid risk of fire, burns, personal injury and electric shock it should not be played with or placed where small children can reach it.
8. Do not use this product for other than its intended use.
9. Do not hang ornaments or other objects from cord, wire, or light string.
10. Do not close doors or windows on the product or extension cords as this may damage the wire insulation.
11. Do not cover the product with cloth, paper or any material not part of the product when in use.
12. This product employs overload protection (fuse). A blown fuse indicates an overload or short-circuit situation. If the fuse blows, unplug the product from the outlet. Also unplug any additional strings or products that may be attached to the product. Replace the fuse as per the user servicing instructions(follow product marking for proper fuse rating)and check the product. If the replacement fuse blows, a short-circuit may be present and the product should be discarded.
13. Read and follow all instructions that are on the product or provided with the product.

CAUTION: To reduce the risk of fire and electric shock:

1. Do not install on trees having needles, leaves or branch coverings of metal or materials which look like metal; and
2. Do not mount or support wires in a manner that can cut or damage wire insulation.

SAVE THESE INSTRUCTIONS

USE AND CARE INSTRUCTIONS

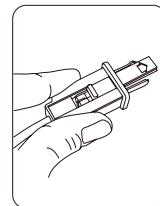
1. When the product is placed on a live tree, the tree should be well maintained and fresh. Do not place on live trees in which the needles are brown or break off easily. Keep the tree holder filled with water.
2. If the product is placed on a tree, the tree should be well secured and stable.

3. Before using or reusing, inspect product carefully. Discard any products that have cut, damaged, or frayed wire insulation or cords, cracks in the lampholders or enclosures, loose connections, or exposed copper wire.
4. When storing the product, carefully remove the product from wherever it is placed, to avoid any undue strain or stress on the product conductors, connections, and wires.
5. When not in use, store neatly in a cool, dry location protected from sunlight.

USER SERVICING INSTRUCTIONS

To replace the fuse:

1. Grasp plug and remove from the receptacle or other outlet device. Do not unplug by pulling on cord.
2. Open fuse cover. Slide open fuse access cover on top of attachment plug towards blades.
3. Remove fuse carefully. Turn fuseholder over to remove fuse.
4. **RISK OF FIRE.** Replace fuse only with 3 Amp, 125Volt fuse (provided with product.)
5. Close fuse cover. Slide closed the fuse access cover on top of attachment plug.
6. **RISK OF FIRE.** Do not replace attachment plug. Contains a safety device (fuse) that should not be removed. Discard product if the attachment plug is damaged.



CAUTION

This string is rated 12 Watts (0.1Amps), do not overload. Connect other Lighting Strings or decorative outfits end-to-end up to a maximum of 216 Watts (1.8 Amps) total.

If connecting to a lighting string that does not have a wattage (W) rating (found on the tag within 6 inches of the plug), Calculate The wattage (W) as follows: Multiply the current (0.1A) which is on the flag type tag Within 6 inches of the plug, by 120.

For example, string is rated 120V, 60Hz, 0.1Amps, $0.1 \times 120 = 12$ Watts.

Add the wattage of each light string together for a total of 216 Watts or less. (Do not exceed 216 Watts)

Total amount of wattage that can be connected $216W - 12W = 204W$.

CAUTION

To reduce the risk of fire or electric shock, do not attempt to replace lamps or modify string.

FOR INDOOR AND OUTDOOR USE

NOTE: This item is not a toy and should be used for decorative purposes only.

WARNING

This device complies with Part 15 of the FCC Rules. Operation is subject to the following two conditions: (1) this device may not cause harmful interference, and (2) this device must accept any interference received, including interference that may cause undesired operation.

CAUTION: Changes or modifications not expressly approved by the party responsible for compliance could void the user's authority to operate the equipment.

NOTE: This equipment has been tested and found to comply with the limits for a Class B digital device, pursuant to Part 15 of the FCC Rules. These limits are designed to provide reasonable protection against harmful interference in a residential installation. This equipment generates, uses, and can radiate radio frequency energy and, if not installed and used in accordance with the instructions, may cause harmful interference to radio communications. However, there is no guarantee that interference will not occur in a particular installation. If this equipment does cause harmful interference to radio or television reception, which can be determined by turning the equipment off and on, the user is encouraged to try to correct the interference by one or more of the following measures:

- Reorient or relocate the receiving antenna.
- Increase the distance between the equipment and receiver.
- Connect the equipment into an outlet on a circuit different from that to which the receiver is connected.
- Consult the dealer or an experienced radio/TV technician for help

THESE INSTRUCTIONS ARE FOR THESE ITEM NUMBERS

17612	42464	43640	43894	43959	44195	44196
44203	80248	80286	80288	81841	81997	82063
82187	83007	83073	83075	83136	83154	83543
83661	83700	83766	83768	83880	85042	85200
85262	85263	85380	85381	85382	85395	85497
85498	85524	85560	85561	85664	85665	85666
85687	85699	85708	85784	85785	85787	85799
85800	85801	85831	85832	85848	85859	85884
85885	85893	85894	85895	85898	85921	85977
85978	86094	86095	86213	86214	86263	86314
86487	86488	86489	86490	86503	86548	86549
86550	86551	86563	86576	86577	86580	86580
86809	87296	87297	87306	87313	87505	87506
87507	87508	87517	88429	88450	88453	88455
88459	88461	88463	88465	88493	88494	87838
88055	88058	88059	88060	88061	88062	88556
88085	88231	88233	86551	89469	89468	88693
88694	87877	88306	88510	88511	88513	88467
88695	88502	88503	88505	88506	88507	88509
88498	88499	88501	89045	89047	88075	86765
41955	34958	34959	34911	35674	35675	19982
34945	19981	34946	35609	88079	34836	35634
34960	35687	88632	89878	34922	86853	83813
35964	35965	36037	36038	36490	36491	36578
36750	34958	36590	37680	36987	37678	36880
36462	37623	36881	36593	37172	36882	36594
37865	35772	35773	35902	35903	38156	36094
36018	38740	38741	36023	36028	38828	35960
38922	86469	38884	89757	89758	89759	88510
88511	88513	88502	88503	88505	36091	36069
36093	38042	37348	37183	36250	36261	36270
37194	89516	89712	36396	89487	89573	37910
89118	38579	88075	85893	87506	87505	86765
62840	62842	71219	12636	49336	12638	19281
39891	82789	39639	39638	82031	82058	80822
13037	13040	13044	80655	80732	80739	81094
82564	83724	40001	49631	74942	74970	39687
81920	19074	88971	88854	88591	110684	110872
111111	110582	110583	110601	110343	111262	111266
110780	111277	113681	113683	111264	112906	113884
113886	113885	112853	111458	112714	112715	112716
330022	41598	112699	115737	116077	116750	116096
116383	116895	111458	112714	112715	112716	116076
116077	116094	116095	116096	111458	112714	112715
112716	115738	116078	116079	116277	116278	116683
223475	115582	115955	115799	115800	116750	116707
116708	115741	116273	116274	116275	116276	114891
115096	115291	110583	116279	116286	116290	116280
116281	116282	116283	116284	116285	116287	116288
116289	81920	88971	115954	116872	116074	116086
116317	116318					



Visit WWW.GEMMY.COM for more information.

©2019 GEMMY INDUSTRIES CORP.

117 WRANGLER DRIVE. SUITE 100

COPPELL, TX 75019 U.S.A.

1 (800) 274-6717

MADE IN CHINA / PRINTED IN CHINA