

## EASY COMPOSTING

Composting is usually hard work, but a tumbling composter makes it far easier. The Terra tumbling composter is equipped with:

- (1) An easy-to-use tumbling mechanism that replaces the need to turn your compost.
- (2) A dual-batch divider that allows you to create 2 separate compost batches to speed up composting process - alleviates problems related to continuous addition of organic material to an existing compost batch.
- (3) A drain for compost tea.
- (4) Side air holes for oxygen/aeration

### Compost Recipe:

It is important to have a proper ratio of brown materials (high in carbon) and green materials (high in nitrogen). Too much brown materials and the compost will take years to decompose. Too much green and your compost will become soggy and smelly. A 3:1 brown to green ratio is ideal (three parts brown to one part green).

#### Sample:

- 1 part fresh grass clippings
- 1 part dry leaves
- 1 part good soil

Brown Ingredients	Green Ingredients
Corn cob stalks	Coffee grounds
Paper	Eggshells
Pine needles	Fruit and veggie peels
Sawdust or wood shavings	Grass clippings
Straw	Fresh leaves
Dry leaves	Fresh weeds

Place both brown and green ingredients into the first half of your composter. Once the first half is full, do not add any additional organic materials to the batch until it is complete. Adding additional organic material to a composting batch will delay the process. Instead, start a second compost batch in the second half of the composter.

#### What a composter needs:

Other than the materials placed in the composter to decompose there are two other important factors for good compost.

**Oxygen:** To break down the compost more efficiently microorganisms need a lot of oxygen. Tumbling the composter will create new pathways for oxygen.

**Water:** Too much moisture could drown the microorganisms and too little could dehydrate them. It is important to maintain a proper balance of moisture in the compost. The compost should be as moist as a well-wrung sponge. If the compost becomes too dry, pour water inside the lid to keep it moist.

It is recommended that once you fill your tumbler with material and leave it for a few days to allow the composting process to begin. Thereafter, you should aim to turn it several times each day to ensure that the composting bacteria is afforded as much oxygen as possible and also to prevent any drying out around the edges. A compost accelerator can also be added to your compost batches to shorten the composting lead time.



# Terra Dual-Batch Tumbling Composter 55 Gallons / 7.4 Cubic Feet

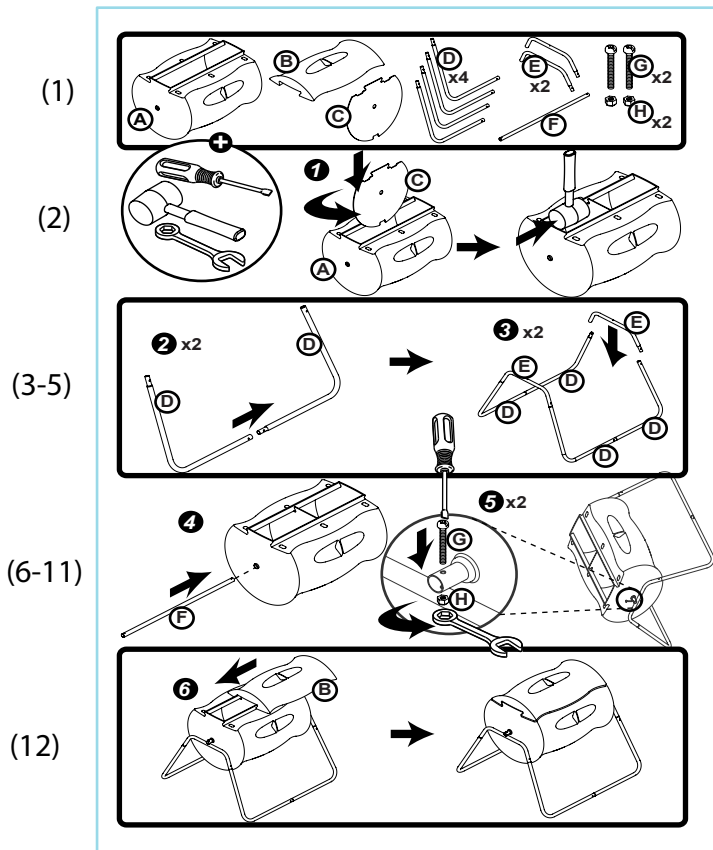


# Congratulations on the purchase of your Terra Tumbling Composter

## INSTALLATION

Please consult figures below.

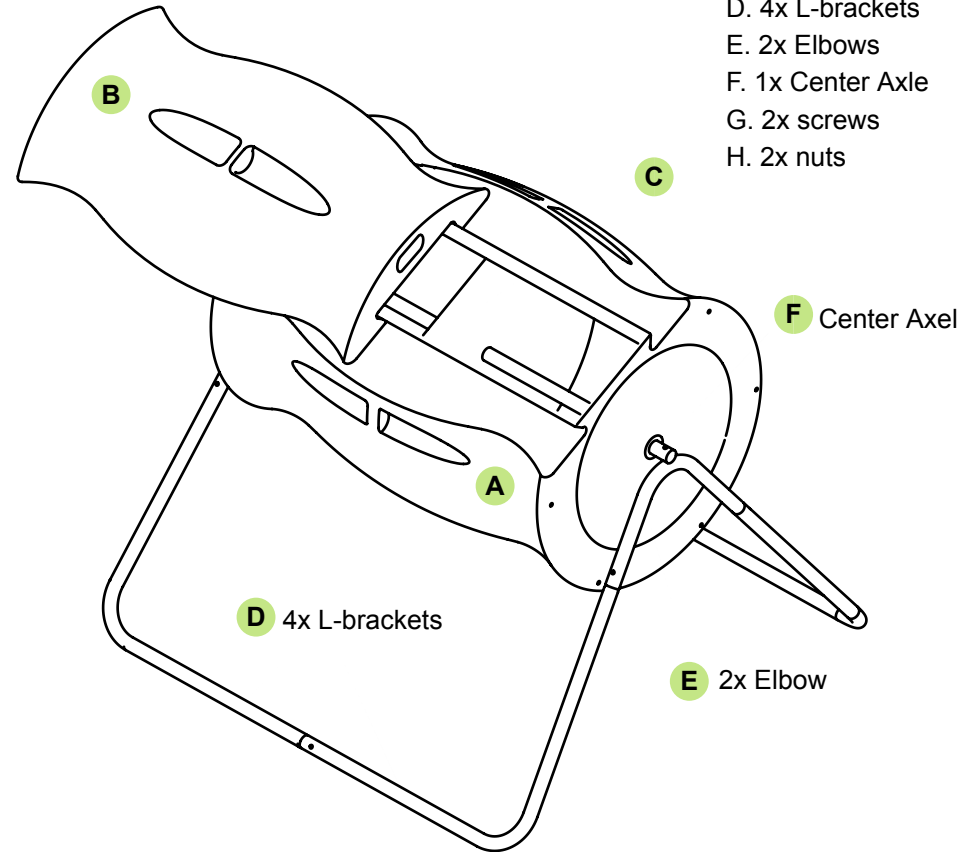
- (1) Remove all components from the barrel.
- (2) Insert the center divider into the barrel. Apply force to lock the divider into the grooves in the handle. You may need to bend the divider and apply force using a small hammer.
- (3) Take 2 L-brackets and clip them together. All brackets utilize clip-on fastening mechanisms.
- (4) Take the remaining 2 L-brackets and clip them together.
- (5) Build the frame by using the 2 elbows to connect the structure together.
- (6) Remove the center axel and pass it through the barrels, taking care to guide the axel through the holes at both ends of the barrel, and through the hole in the center divider.
- (7) Place the stand on its side.
- (8) Rest the barrel and axel vertically up against the stand, taking care to hold the ends of the axel up against the middle (bend) of the 2 elbows.
- (9) At the top of the barrel, line up the hole in the elbow with the hole at the end of the axel. Insert a screw through both the hole of the axel and through the hole in the middle of the elbow. Insert the nut and tighten the nut to hold the axel to the elbow.
- (10) Flip the barrel and stand.
- (11) Repeat step #9 for the other end.
- (12) Return unit to the upright position and slide access door into opening.



### COMPONENTS:

- A • 50 Gallon Barrel
- B • 1x Sliding Access Door
- C • 1x Removable Center Divider
- Galvanized Steel Stand:
  - D. 4x L-brackets
  - E. 2x Elbows
  - F. 1x Center Axle
  - G. 2x screws
  - H. 2x nuts

figure 1



### COMPONENTS:

- A • 50 Gallon Barrel
- B • 1x Sliding Access Door
- C • 1x Removable Center Divider
- Galvanized Steel Stand:
  - D. 4x L-brackets
  - E. 2x Elbows
  - F. 1x Center Axle
  - G. 2x screws
  - H. 2x nuts

### WINTER CARE

During the winter months you may leave your composter out. The compost process will eventually slow down with temperature.

### WARRANTY

The Terra Tumbling Composter carries a 20 Year Limited Warranty on the enclosure and door only.

All accessories included in with the Terra Composter are NOT included in the Warranty. The Warranty covers manufactures defects only. The Warranty does NOT cover neglect or owners misuse.

*Proof of purchase must be presented to cover any warranties.*