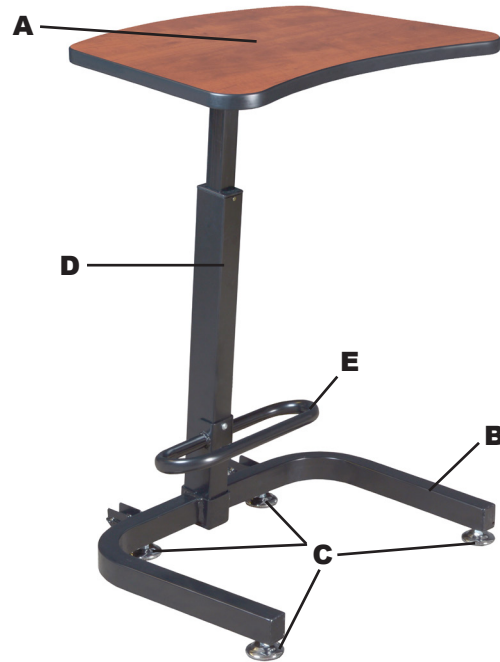


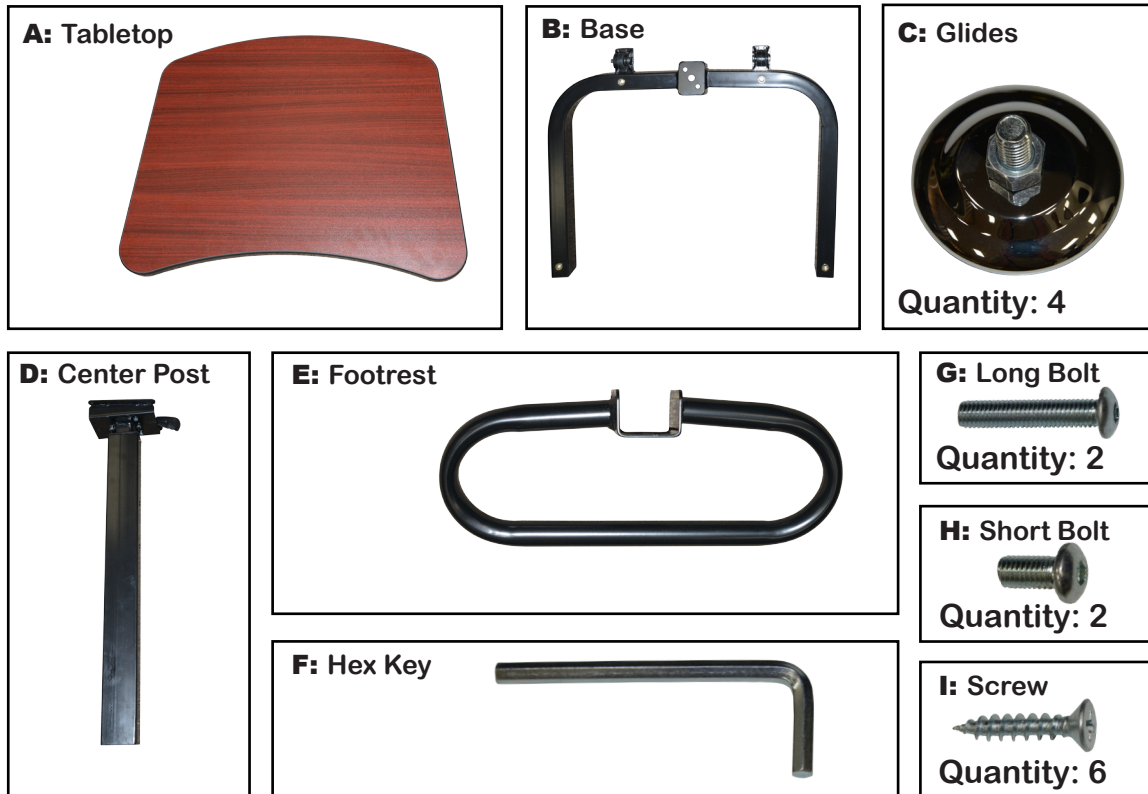
REGENCY

Brody Sit-Stand Desk • 1900 • INSTRUCTIONS

Organize your parts. You will need a phillips screwdriver.



Parts :



IMPORTANT NOTICE:

Place all wooden parts on a clean and smooth surface such as a rug or carpet to avoid the parts from being scratched.

Check to be sure that you have all parts and hardware.

Remove all wrapping materials, including staples & packing straps before you start to assemble.

Do not tighten all screws/bolts until completely assembled.

Keep all hardware parts out of reach of children.

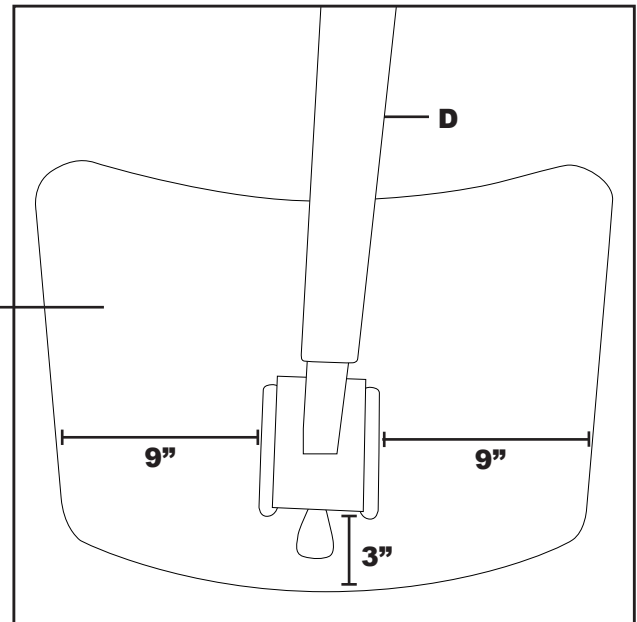
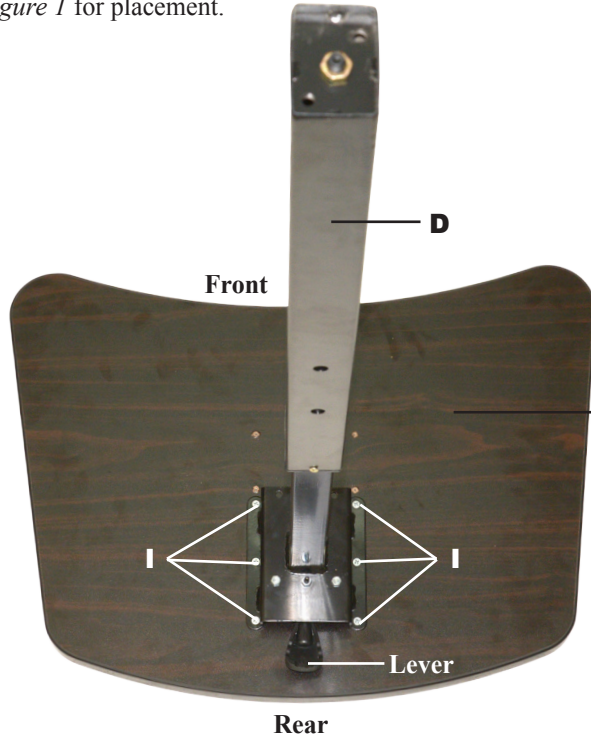
Any problems or questions call Regency Office Furniture at 1-866-816-9822

REGENCY

Brody Sit-Stand Desk • 1900 • INSTRUCTIONS

Organize your parts. You will need a phillips screwdriver.

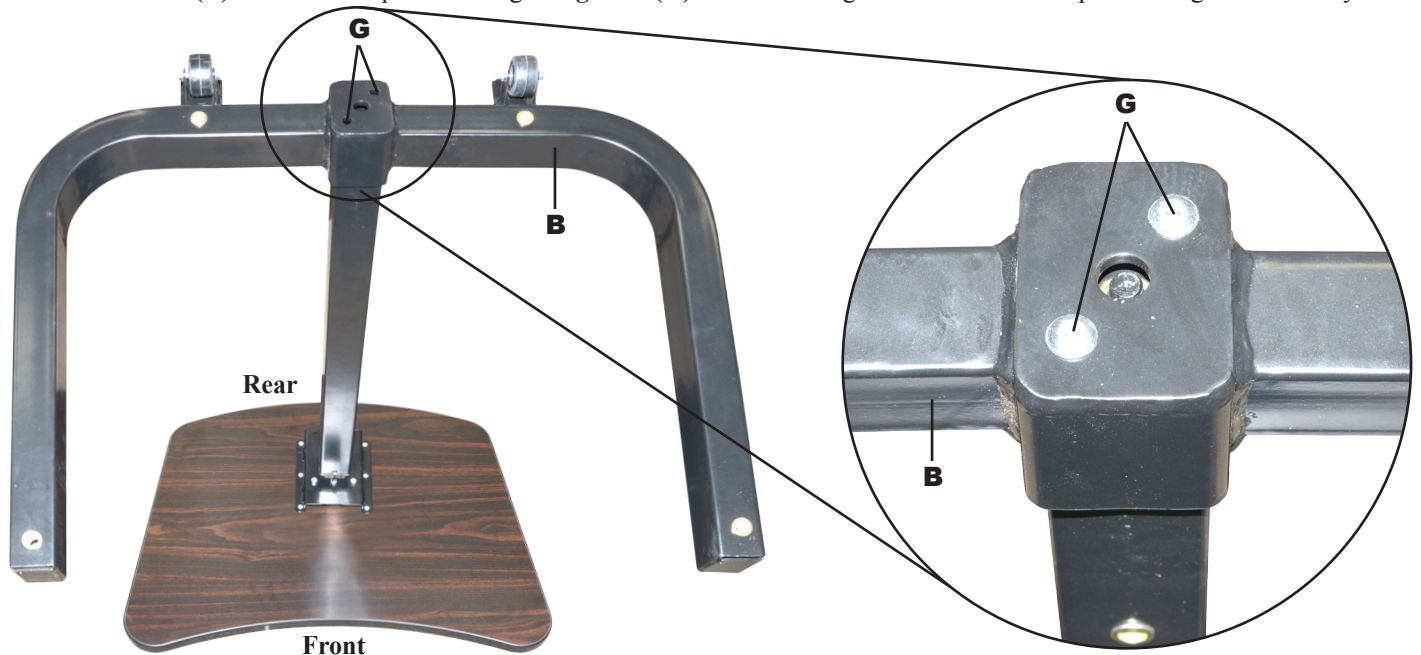
STEP 1 : Choose side you wish to use for your **Tabletop(A)**. Using **Screws(H)** attach **Center Post(D)** to of underside of **Tabletop(A)**. See *figure 1* for placement.



NOTE: Make sure lever of Center Post(D) is facing rear of desk.

Figure 1

STEP 2 : Attach **Base(B)** to assembled portion using **Long Bolts(G)**. Make sure legs and front of tabletop are facing the same way.



NOTE: You may have to tap in Long Bolts(G) with a rubber mallet.

REGENCY

Brody Sit-Stand Desk • 1900 • INSTRUCTIONS

Organize your parts. You will need a phillips screwdriver.

STEP 3 : Attach Glides(C) to bottom of Base(B). Flip right side up once complete.



STEP 4 : Using Short Bolts(H) and Hex Key(F) Attach Footrest(E) to pre-existing holes on bottom of Center Post(D) (See figure 1.) Make sure Footrest(E) is parallel to ground.

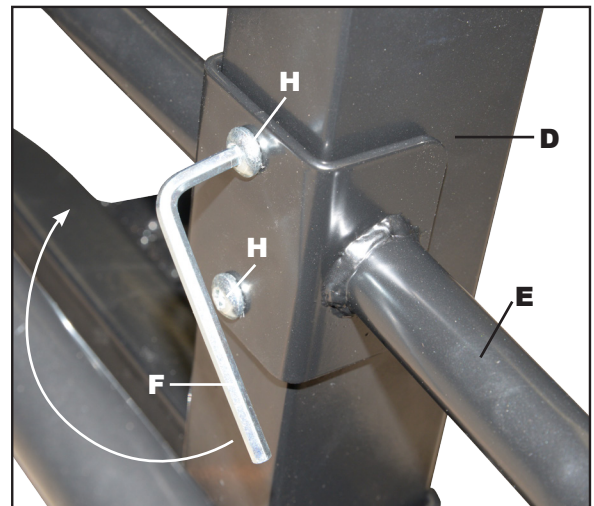
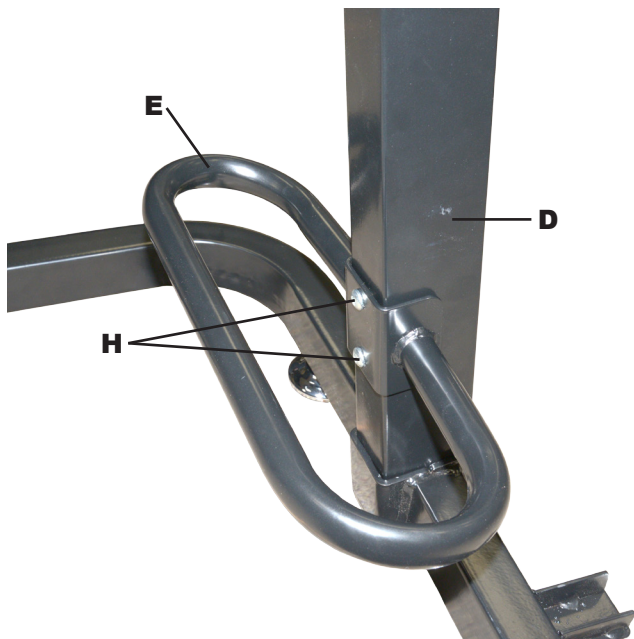


Figure 1