

NOTICE

*Please make sure that you have all part indicated and they are in good condition before you begin assembly of this item. Refer to part list and hardware list below for guidance.

*This item should be assembled on a soft surface to prevent scratching the finish during assembly.

*This item may require periodic tightening.

*If you are having difficulty, our friendly Customer Care team is always here to help. Please email customersupport@safavieh.com

PREPARATION

*Before beginning assembly of product, make sure all part are present. Compare part with part contents list and hardware contents list.

*If any part is missing or damaged, do not attempt to assemble the product.

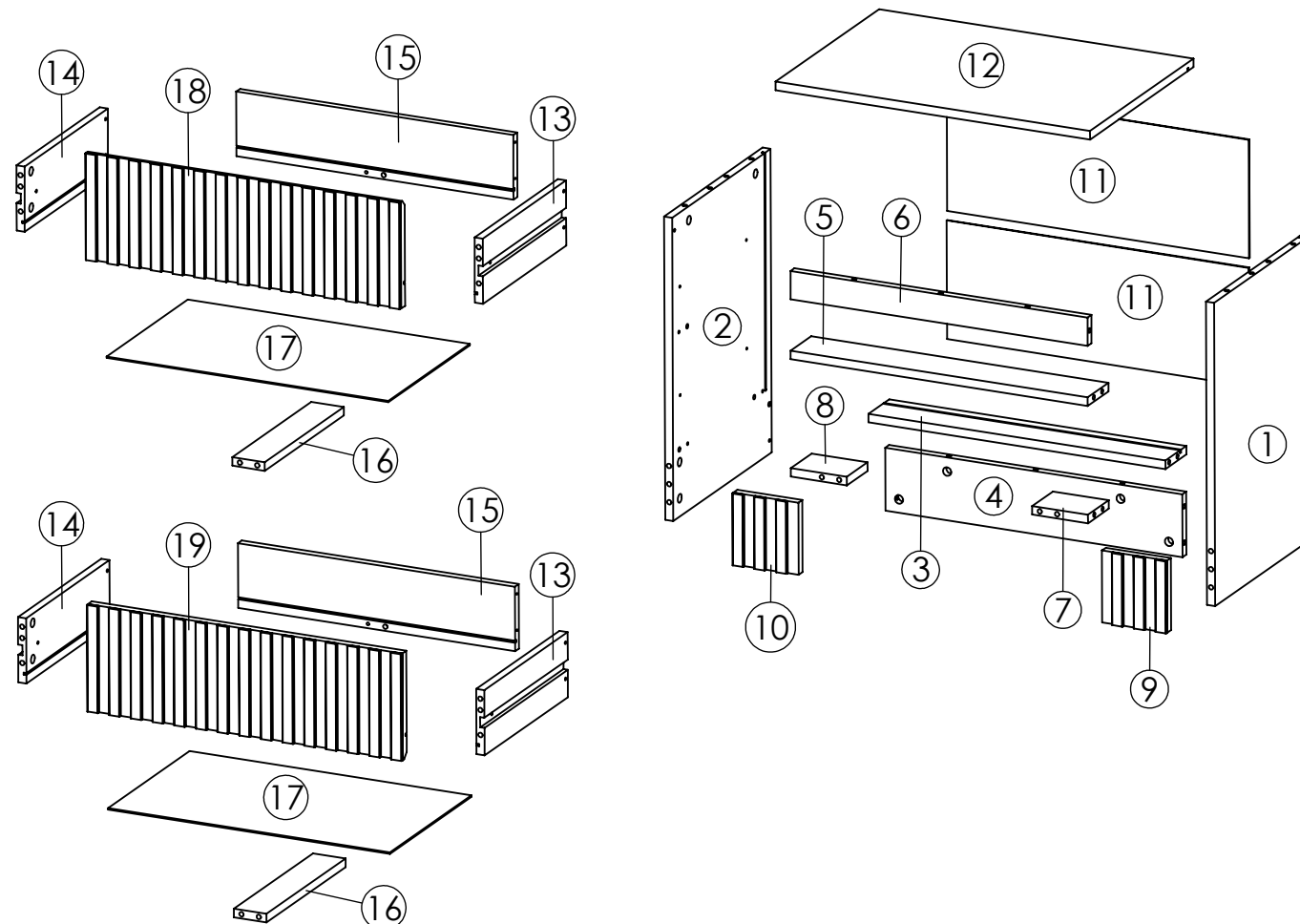
*Estimated Assembly Time: 60 minutes.

*Tools Required for Assembly (Not included): Screwdriver

CARE AND MAINTENANCE

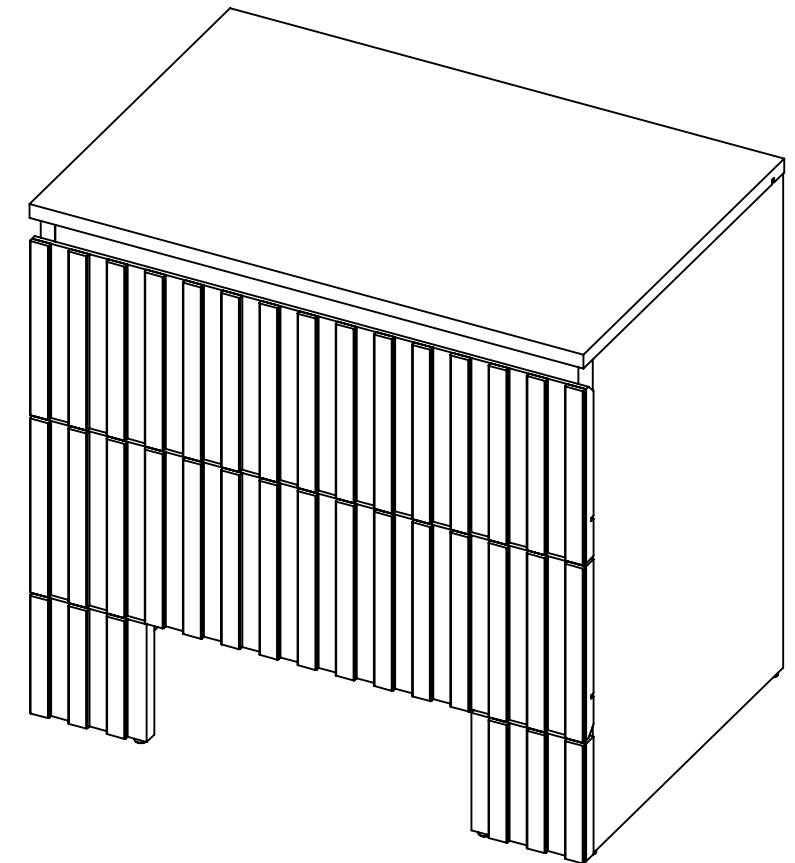
Always use felt pads under all articles to prevent discoloration or softening of the lacquer. Plastic and rubber bases on items can discolor wood. Wipe up spills immediately and avoid common hazards such as hot dishes, harsh solvents and abrasives. Cleaning should be done with a soft lint free cotton cloth dampened with water or furniture polish. On highly used surfaces we recommend applying a quality paste wax which should be used on a regular basis to provide additional protection from scratches and spills. How often you apply the wax depends on how much wear the furniture receives.

Part List



Model# NST3103

Product Dimensions: W 22.83" x D 15.67" x H 21.85"



WARNING :

WEIGHT CAPACITY :

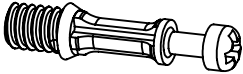
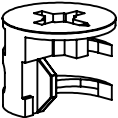



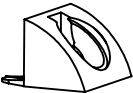
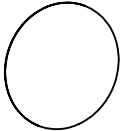
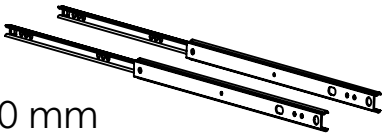
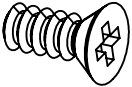
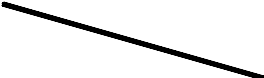

Top : 26 Lbs

Drawer : 11 Lbs

Warning : Do not stand on the product.

Warning : Do not over torque bolts.

Hardware List

<div>Ax33</div> <div></div> <div>Ø6x32 mm</div>	<div>Bx33</div> <div></div> <div>Ø15x12 mm</div>	<div>Cx27</div> <div></div> <div>Ø8x32 mm</div>	<div>Ex10</div> <div></div> <div>Ø7x32 mm</div>	<div>Hx4</div> <div></div> <div>Ø4x19 mm</div>	<div>Ox4</div> <div></div>
<div>Sx16</div> <div></div> <div>Ø20 mm</div> <div>OAK</div>	<div>ASx2</div> <div></div> <div>310 mm</div>	<div>AYx8</div> <div></div> <div>Ø5x8.5 mm</div>	<div>CPx1</div> <div></div> <div>list "H" 547 mm</div>	<div>CQx4</div> <div></div> <div>Ø4x10 mm</div>	

Part List & HW

Piece	Description	Qty	Carton Call
1	Right Side Panel	1	1 of 1
2	Left Side Panel	1	1 of 1
3	Back Fixed Shelf	1	1 of 1
4	Bottom Support	1	1 of 1
5	Front Fixed Shelf	1	1 of 1
6	Top support	1	1 of 1
7	Right leg support	1	1 of 1
8	Left leg support	1	1 of 1
9	Right leg	1	1 of 1
10	Left leg	1	1 of 1
11	Back Panel	2	1 of 1
12	Top Panel	1	1 of 1
13	Right Side Drawer	2	1 of 1
14	Left Side Drawer	2	1 of 1
15	Drawer Back	2	1 of 1
16	Drawer Base Support	2	1 of 1
17	Drawer Base	2	1 of 1
18	Upper Front Drawer	1	1 of 1
19	Lower Front Drawer	1	1 of 1

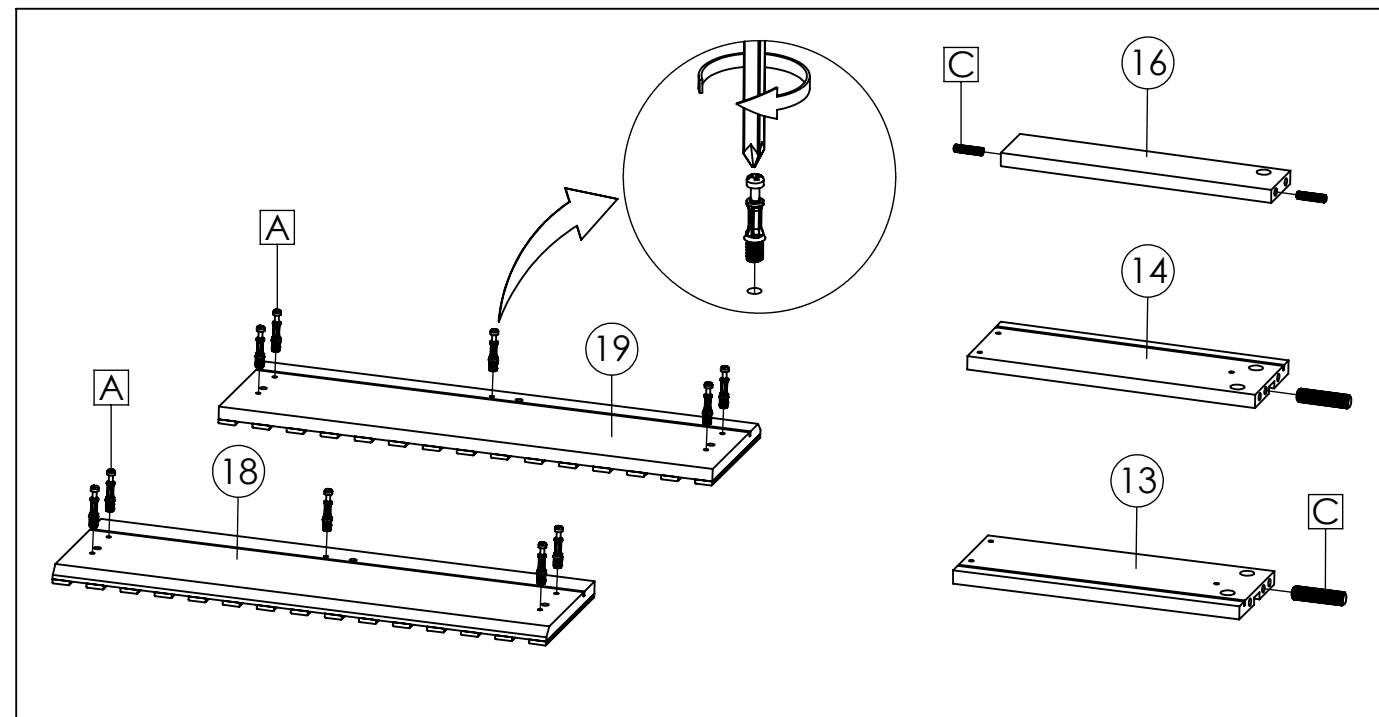
Piece	Description	Qty	Carton Call
A	Cambolt	33	1 of 1
B	Camlock	33	1 of 1
C	Wooden Dowel	27	1 of 1
E	Screw M 7 x 32 mm	10	1 of 1
H	Screw M 4 x 19 mm	4	1 of 1
O	Plastic Stopper	4	1 of 1
S	Cover Cap Sticker	16	1 of 1
AS	Mini Slide Runner	2	1 of 1
AY	Screw M 5 x 8,5 mm	8	1 of 1
CP	List "H"	1	1 of 1
CQ	Bolt M 4 x 10 mm	4	1 of 1

PREPARATION

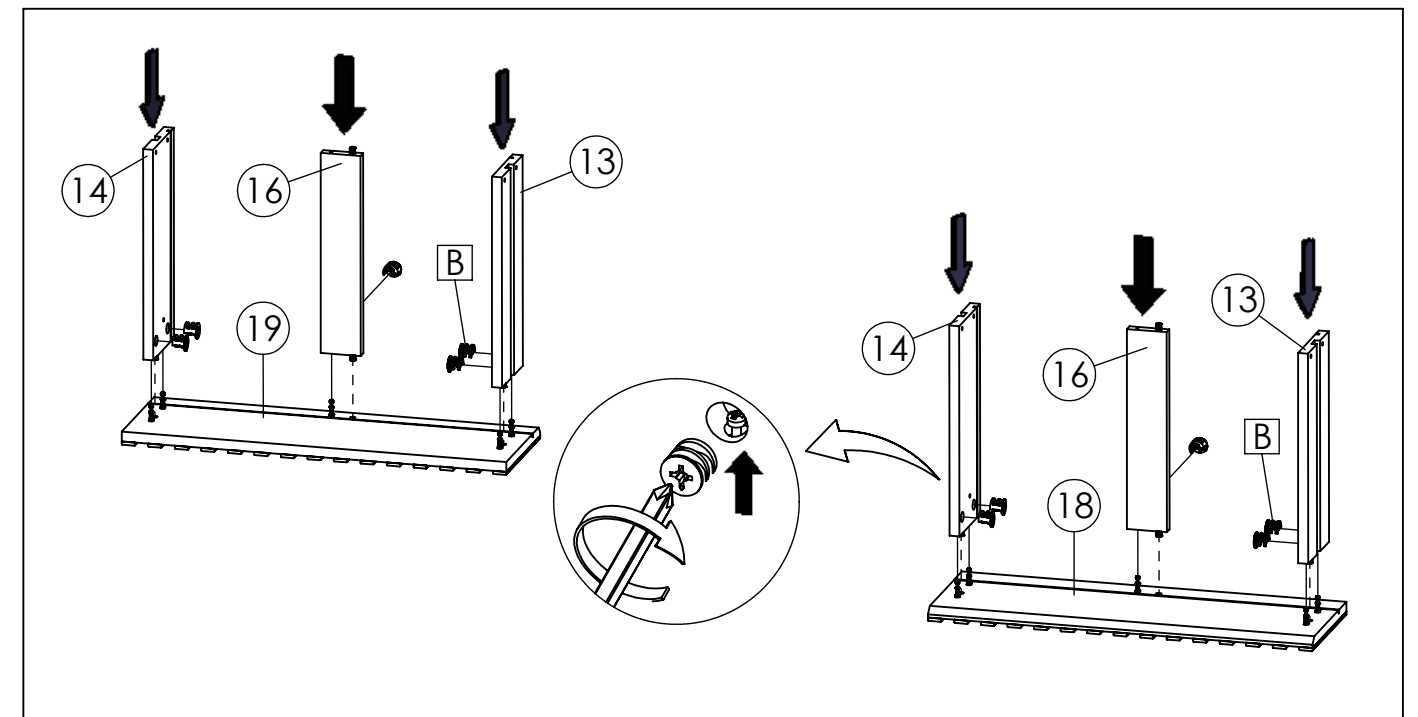
Before beginning assembly of product, make sure all part are present. Compare part with part contents list and hardware contents list.

If any part is missing or damaged, do not attempt to assemble the product.

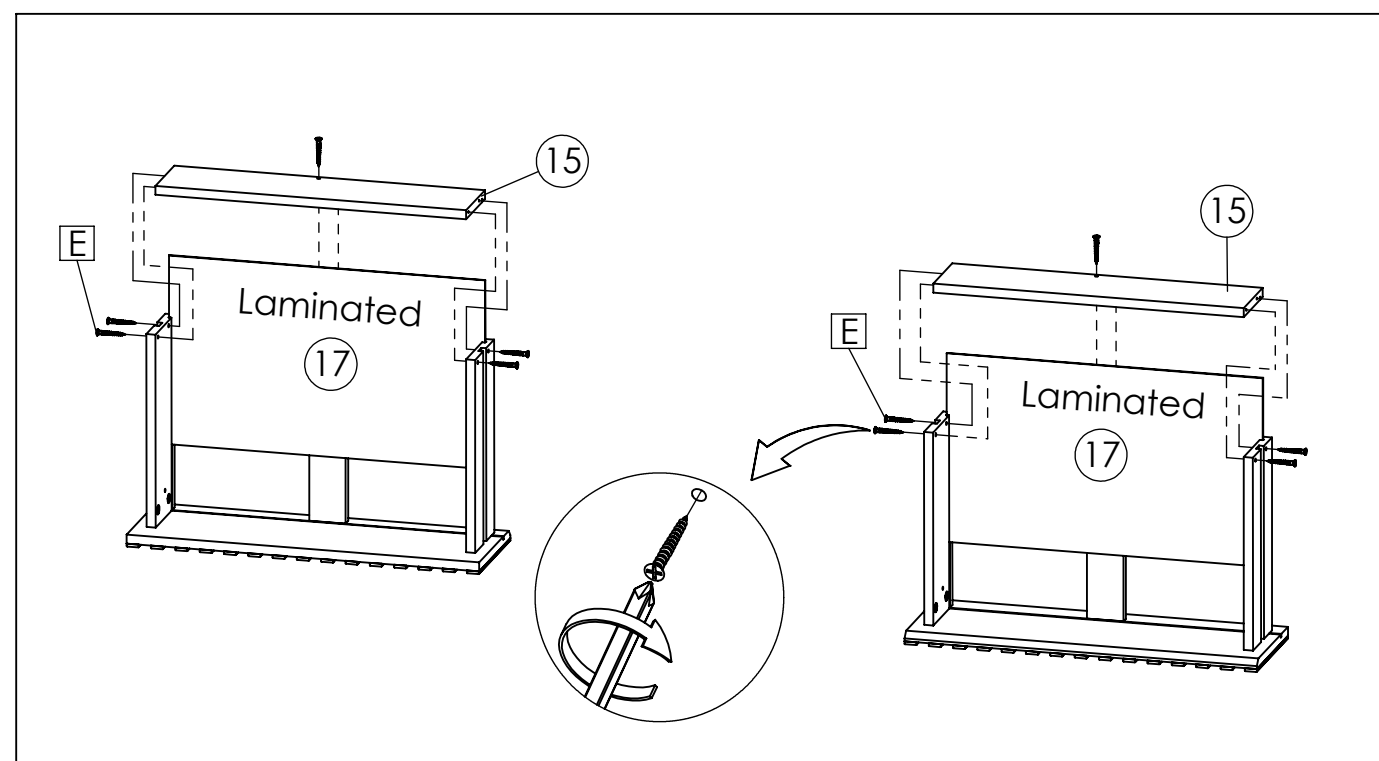
Estimated Assembly Time: 60 minutes.



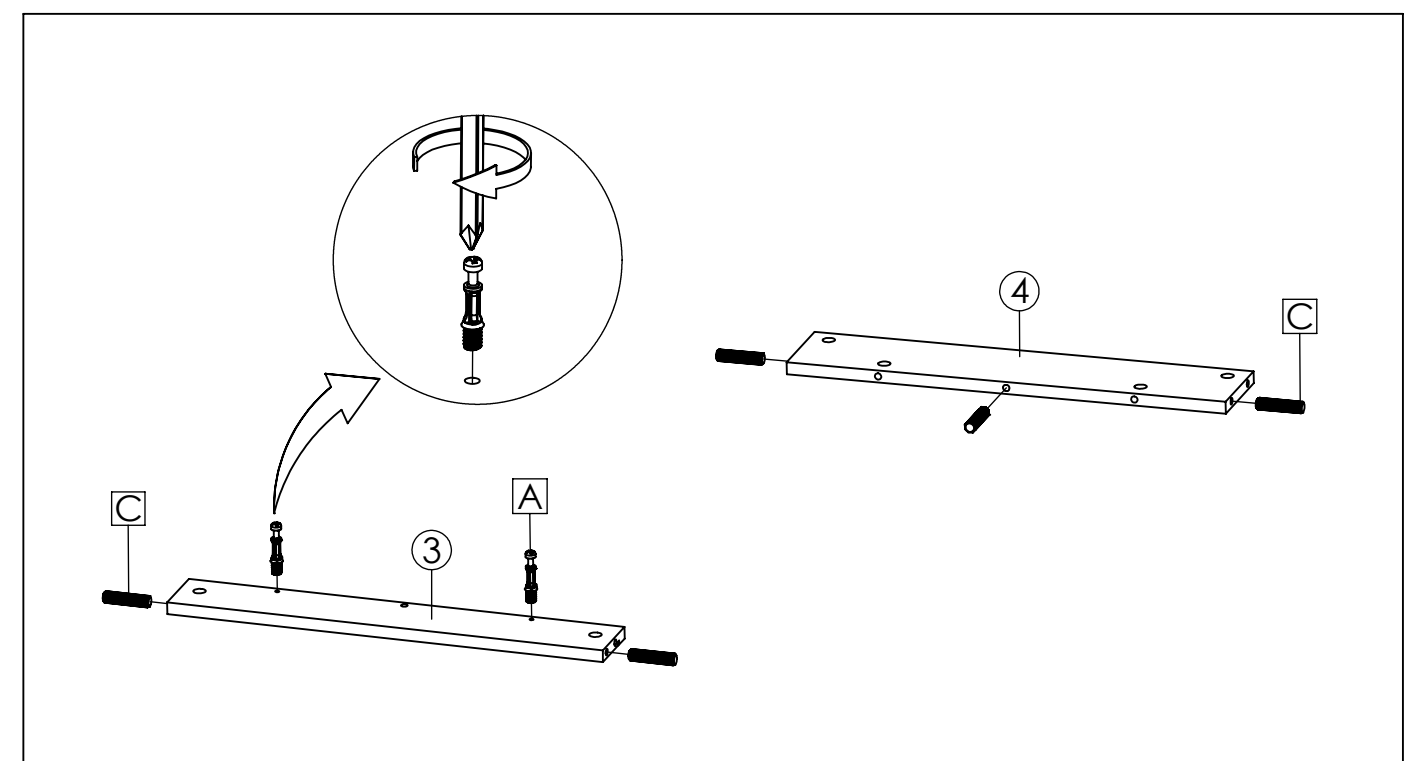
STEP1: Insert Cambolt (A) into Upper Front Drawer (18) And Lower Front Drawer(19).Insert Wooden Dowel (C) into Side Drawers (13 & 14). And Drawer Base Support (16)



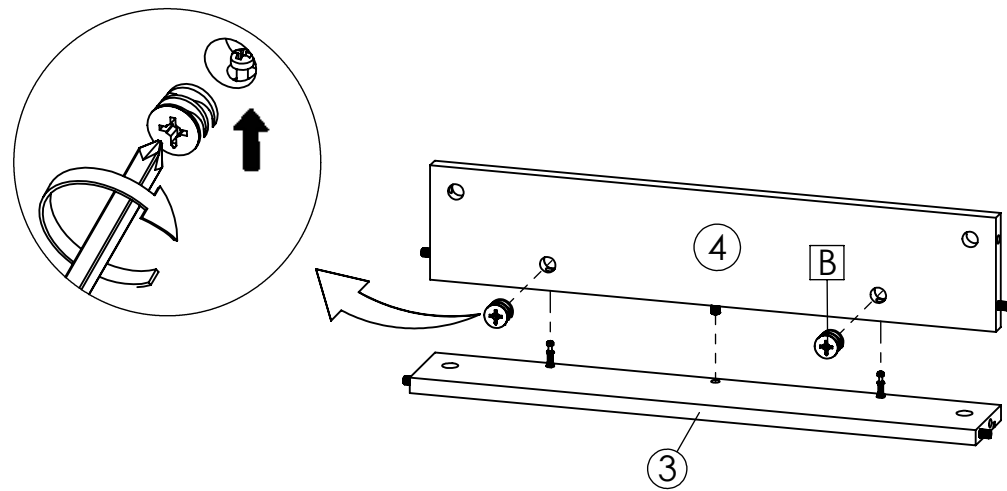
STEP2: Combine Side Drawers (13 & 14) and Drawer Base Support (16) into Upper Front Drawer (18), Lower front drawer (19) then tighten camlock (B) using screwdriver.



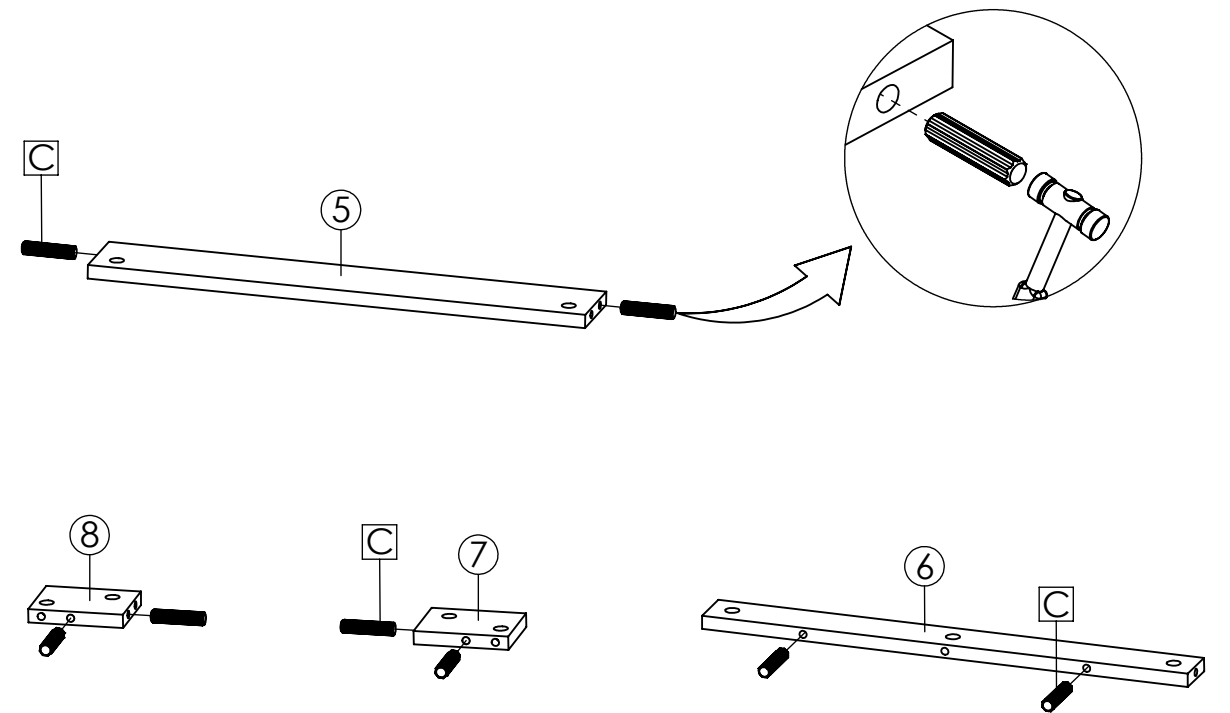
STEP3: Insert Drawer Base (17), then put Drawer Back (15) with laminated face facing upward then secure with Screw M7x32mm (E).



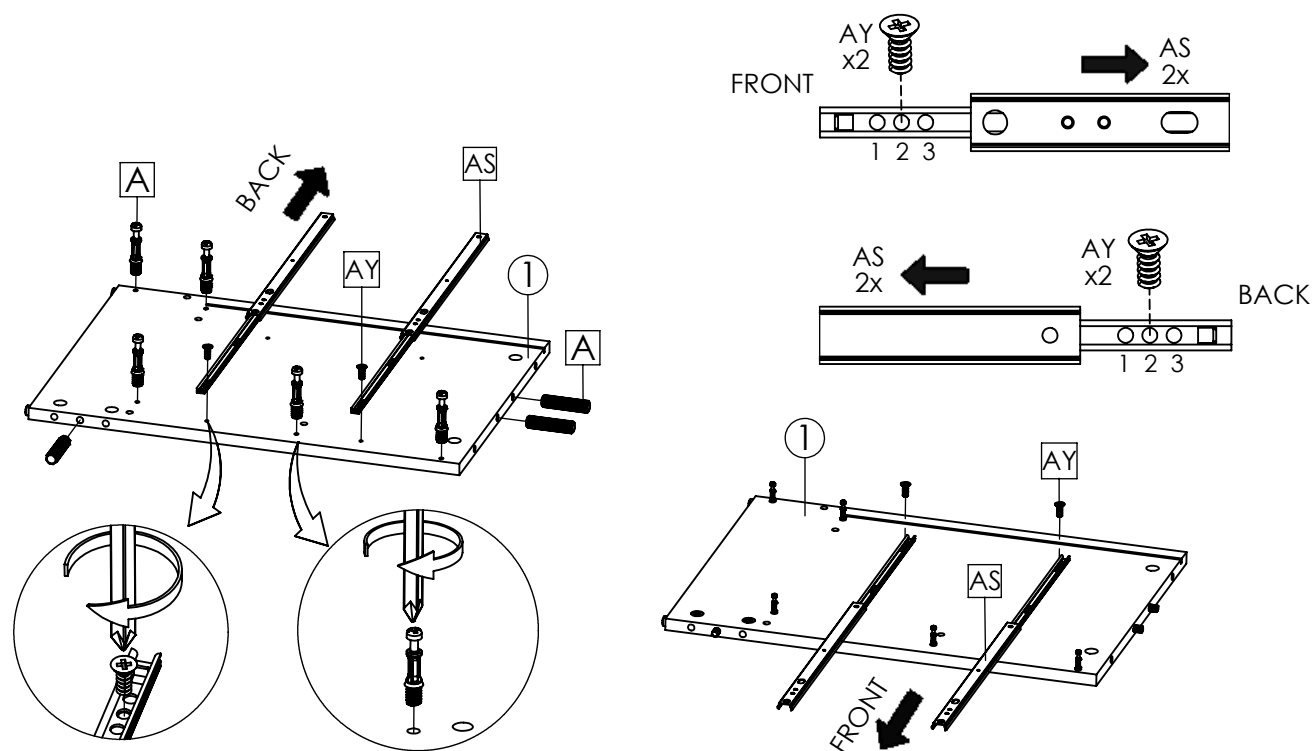
STEP4: Insert Cambolt (A) into Back Fixed Shelf (3).Insert Wooden Dowel (C) into Back Fixed Shelf (3) and bottom back panel (4)



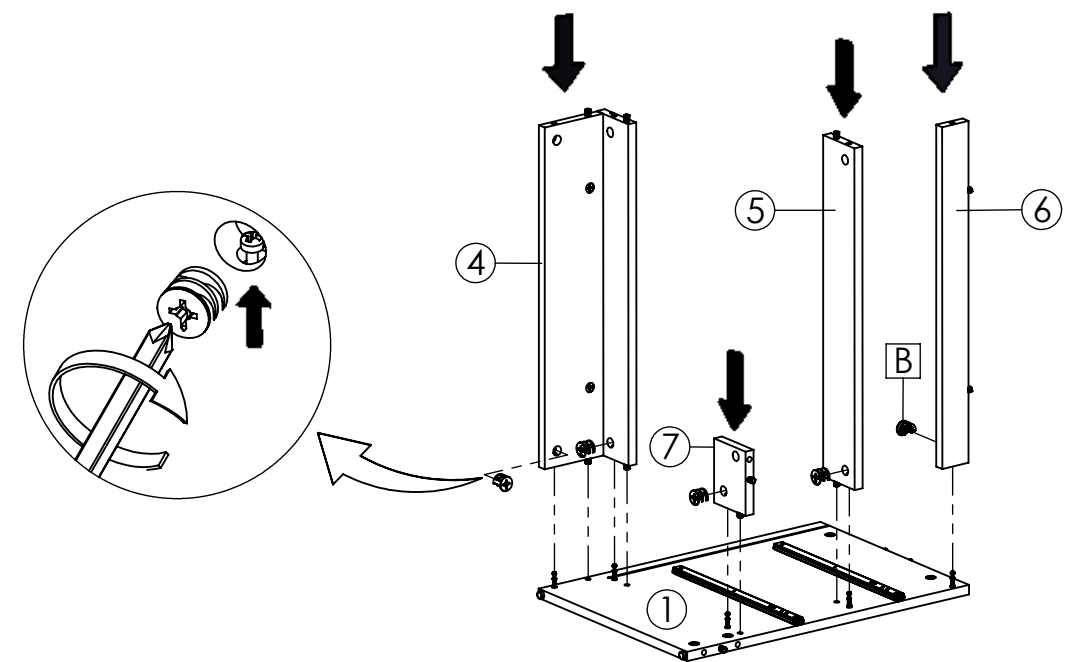
STEP5: Combine Back Fixed Shelf (3) into Bottom support (4) then tighten camlock (B) using screwdriver.



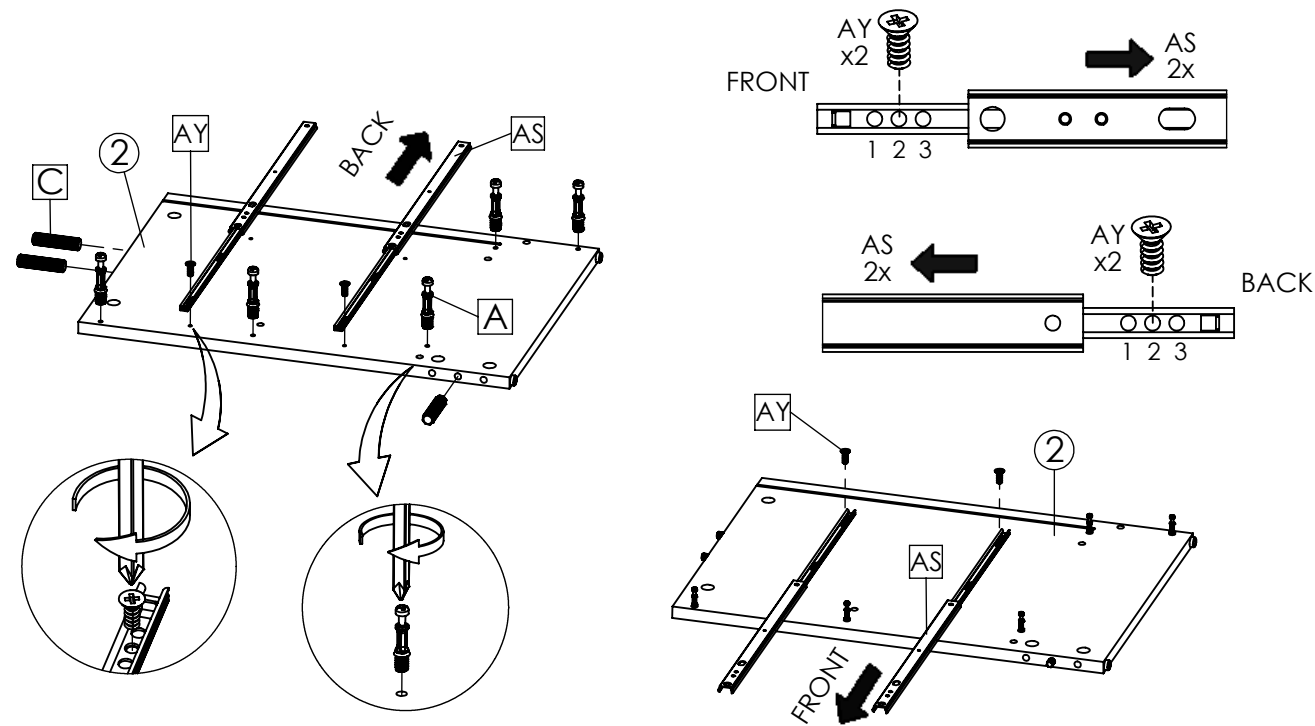
STEP6: Insert Wooden Dowel (C) into front fixed shelf (5), top support (6), right inner front cross (7) And left inside front cross (8)



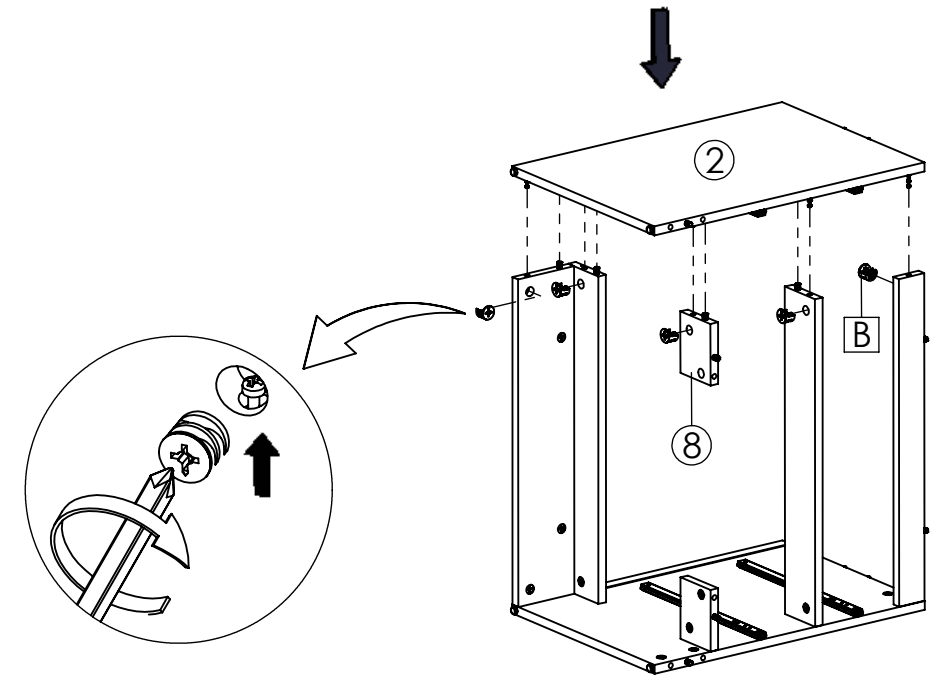
STEP7: Insert Cambolt (A) into right side panel (1). Insert Wooden Dowel (C) into right Side Panel (1). Install the mini slide runner (AS) into position as shown in picture. Secure with screws M5x8,5mm (AY).



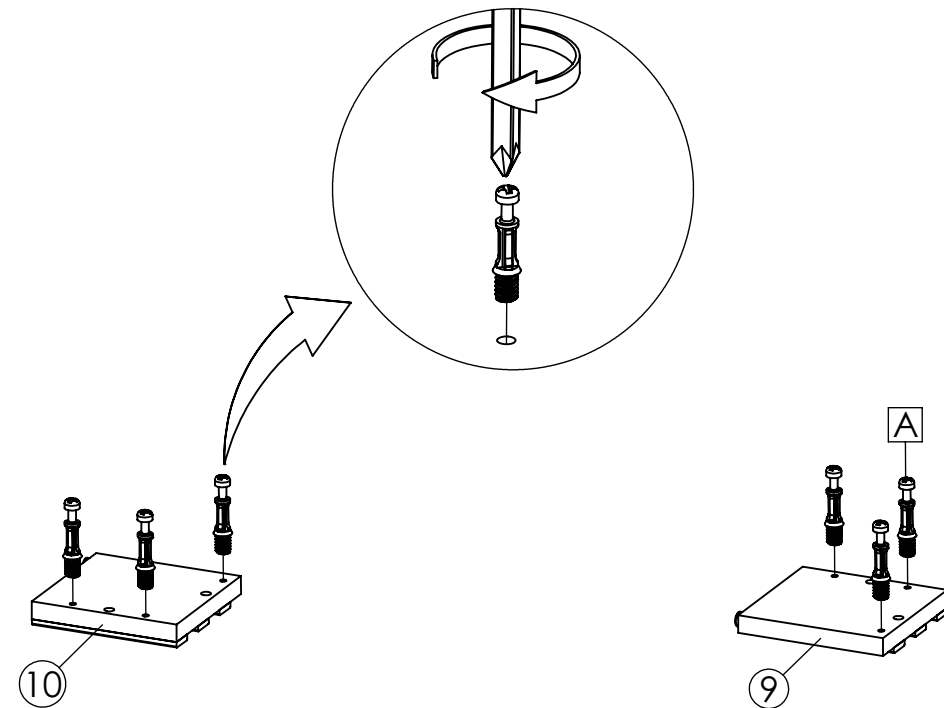
STEP8: Attach Bottom Back panel (4), front fixed shelf (5), top frame (6), and right inner front cross (7) into Right side panel (1). Secure with Camlock (B) and tighten it using screwdriver.



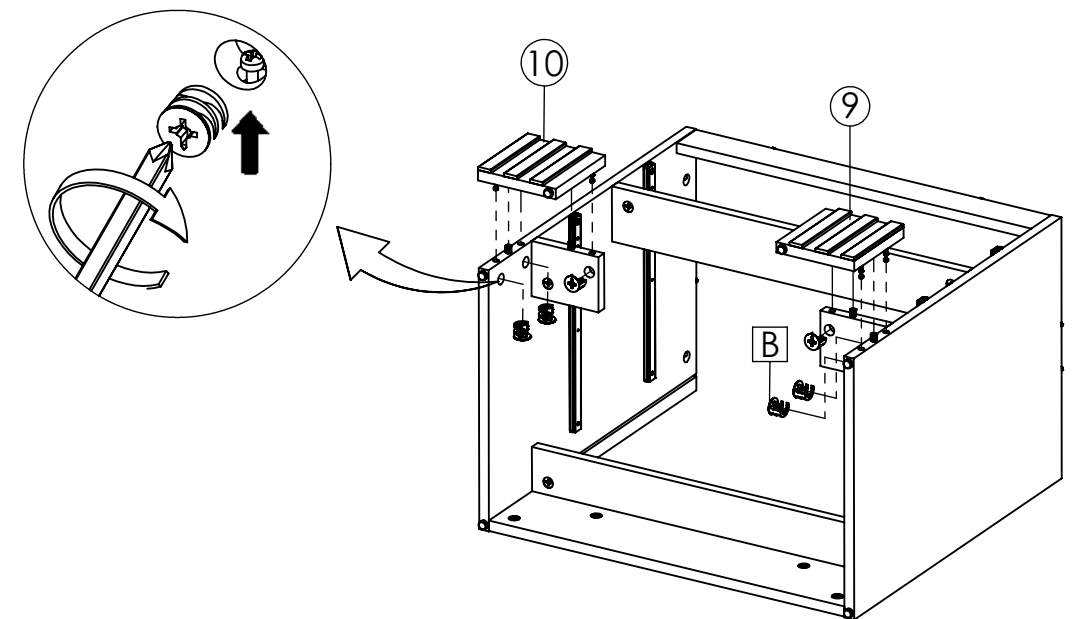
STEP9: Insert Cambolt (A) into left side panel (2). Insert Wooden Dowel (C) into left Side Panel (2).
Install the mini slide runner (AS) into position as shown in picture.
Secure with screws M5x8,5mm (AY).



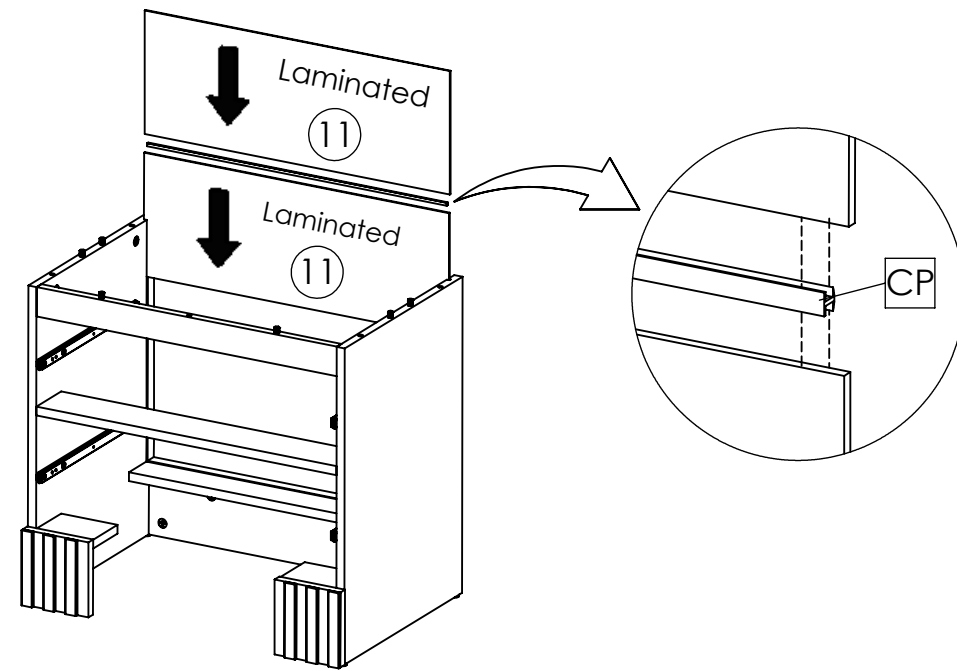
STEP10: Attach Left side panel (2) and Left inside front cross (8)
Secure with Camlock (B) and tighten it using screwdriver.



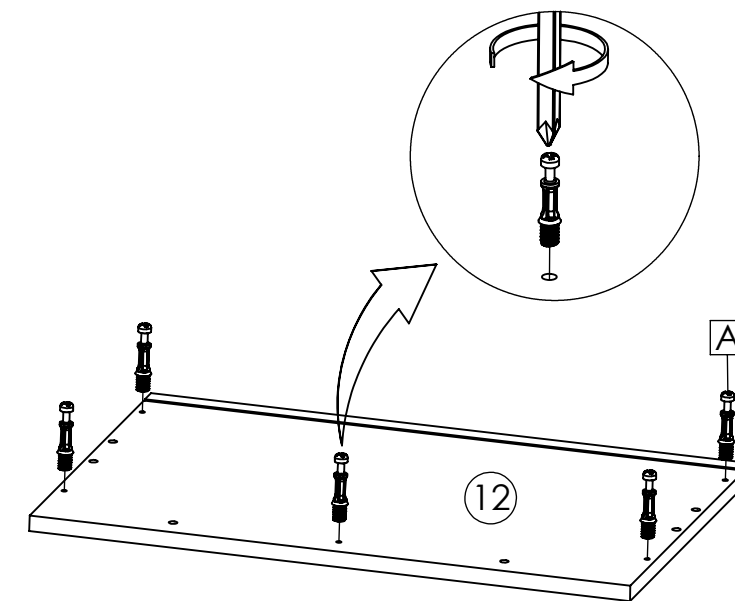
STEP11: Insert Cambolt (A) into Right leg (9) And Left leg (10)



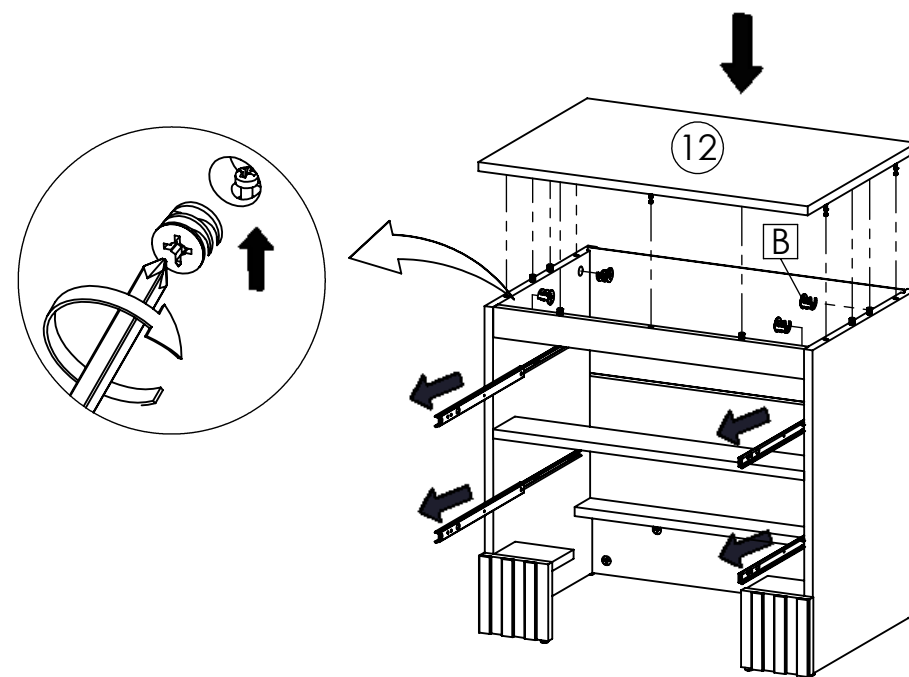
STEP12: Insert Right leg (9), Left leg (10) Secure with Camlock (B) and tighten it using screwdriver.



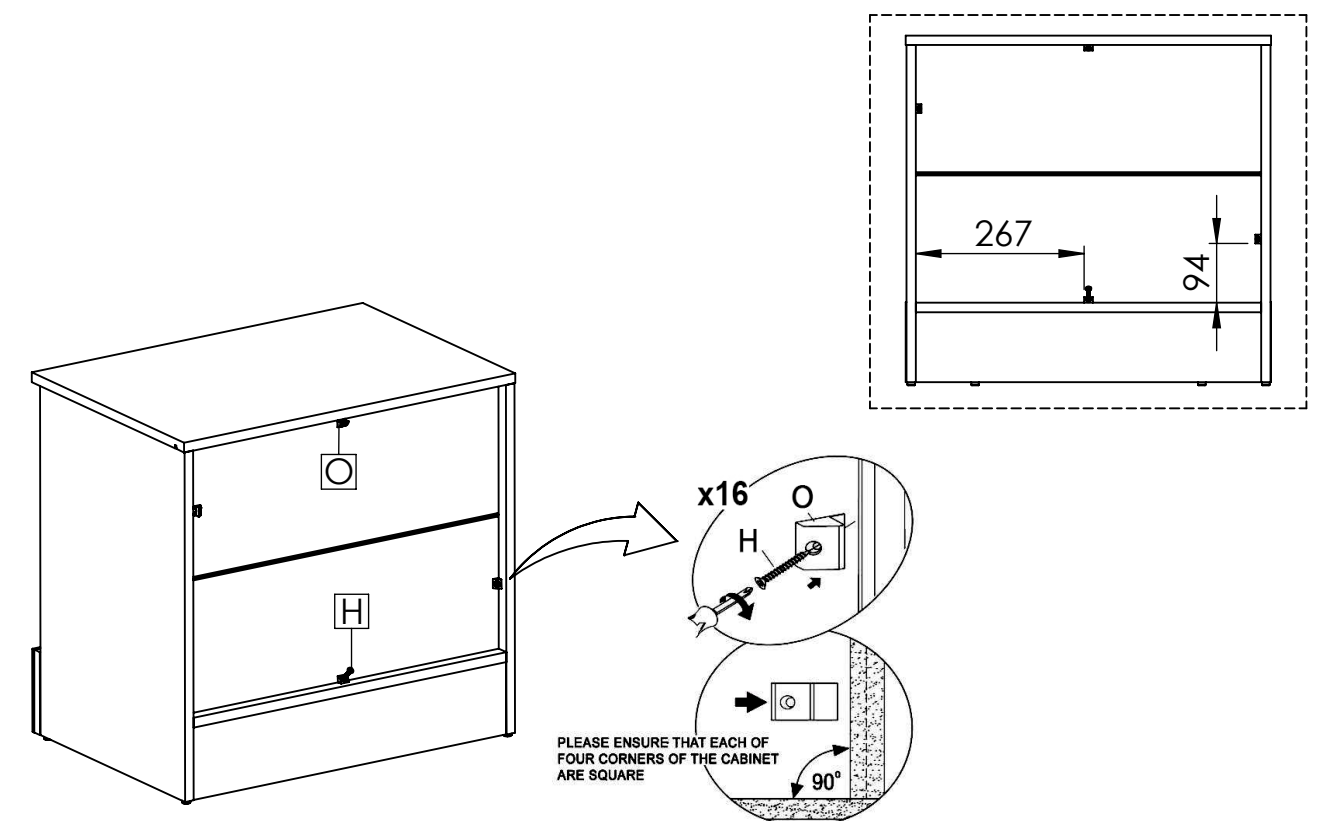
STEP13: Insert Back panel 2x (9), And List "H" (CP)



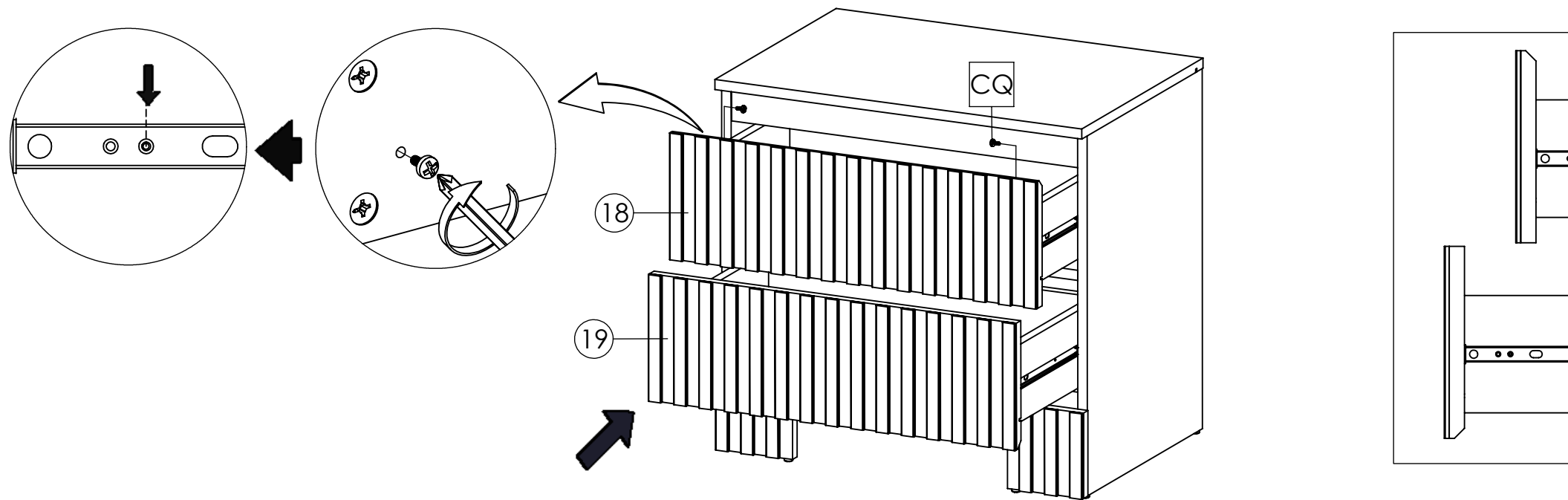
STEP14: Insert Cambolt (A) into top panel (12)



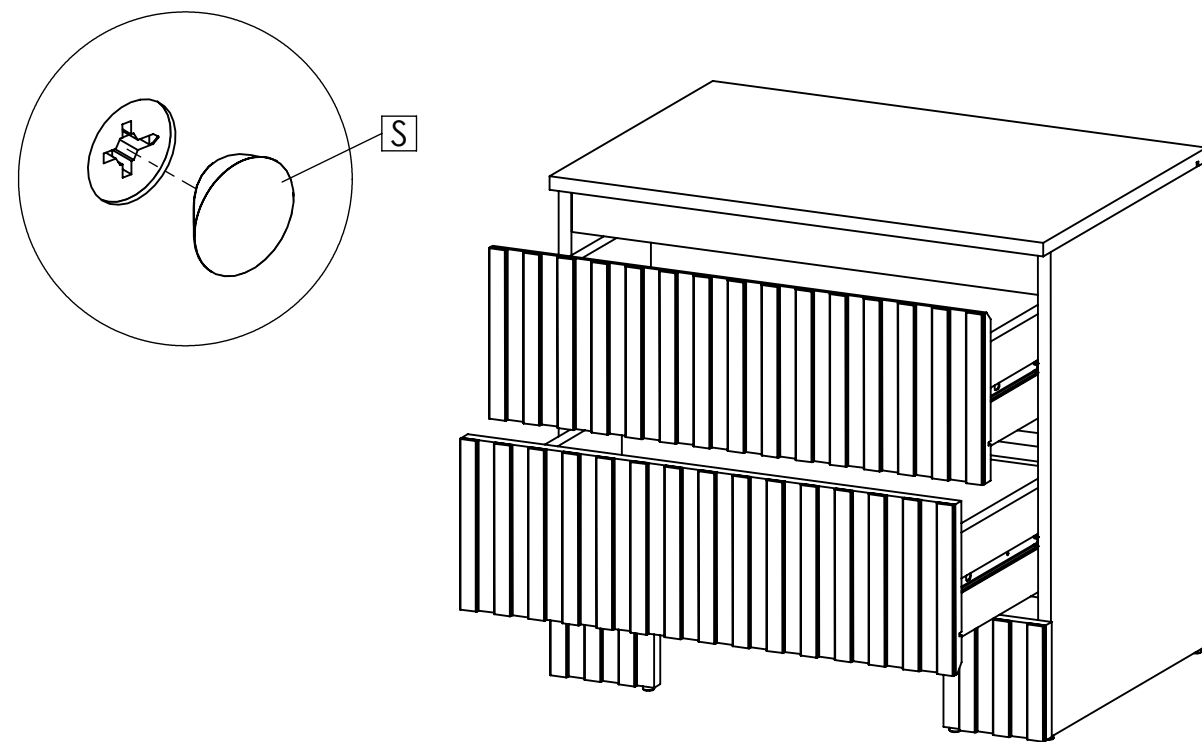
STEP15: Insert top panel (12), Secure with Camlock (B) and tighten it using screwdriver.



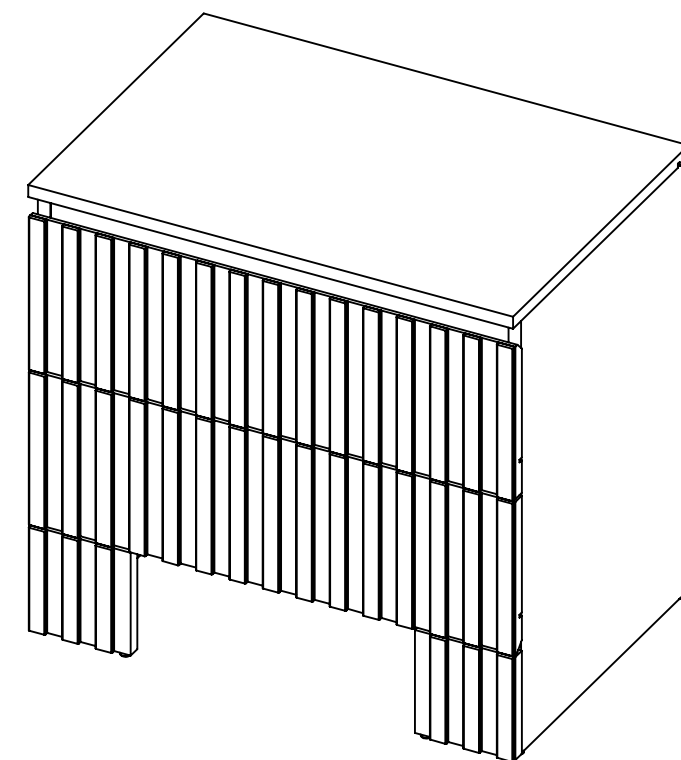
STEP16: Attach the plastic stopper (O) to the back panel Secure with screw M4x19 mm (H) and tighten it using screwdriver.



STEP17: Insert the assembled drawer, Secure with Bolt M4x10 mm (CQ) and tighten it using screwdriver.



STEP18: Attach cover cap sticker (S) to the panel that has lamination



STEP19: Assembly is complete