

Smart Lighting from the radiant® collection



*Live easier with
lighting that works
on your schedule,
adjusting for every
mood, time of day,
or task at hand.*

Control lights and power from anywhere.

The easy-to-install connected home is here. Put the power of a smarter home technology to work for your clients with simple, scalable solutions that provide control of lights from any smart device, anywhere.

FEATURES & BENEFITS

- Control lights from smart phones and tablets with the Smart Lights app
- Schedule lights on/off automatically, group lights, and create Scenes
- Know your home is secure, even when you're away
- Just ask Amazon Alexa or the Google Assistant to turn lights on
- Works with smart products from Nest, Ring, Samsung ARTIK and more
- Out-of-the-box connectivity with OCF certification
- Easy installation
- Works with existing home Wi-Fi

*Just ask "Alexa, turn on
the lights," or use any
smart device to turn
lights on for you.*



*Take comfort in
knowing your
home is secure,
even when
you're away.*



A SMART SWITCH | WWRL10

Easily replace standard switches with the Smart Switch to allow convenient control of lights — from anywhere.

Bonus: works with any 3-way switch

B SMART TRU-UNIVERSAL DIMMER | WWRL50

The Smart Tru-Universal Dimmer works with any 120V dimmable bulb for perfect dimming — every time.

Bonus: works with any multi-location dimmer

C SMART PLUG-IN SWITCH | WWP10

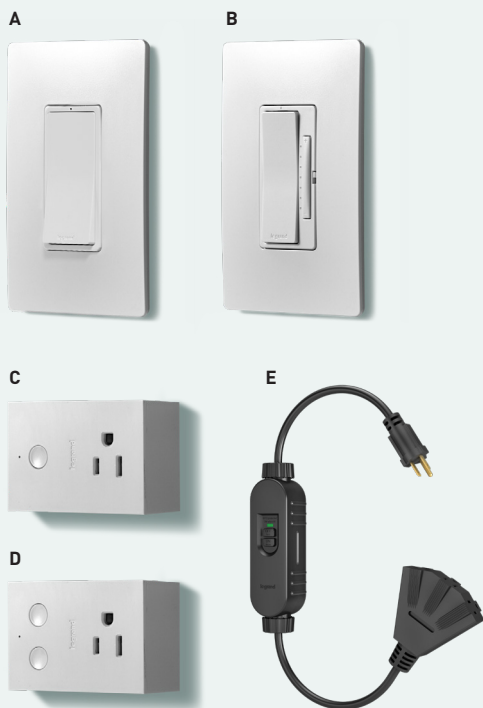
Simply plug in to allow wireless on/off control with no installation required.

D SMART PLUG-IN TRU-UNIVERSAL DIMMER | WWP20

Simply plug in to allow wireless dimming with patented Tru-Universal technology that works with all 120V dimmable bulbs.

E SMART PLUG-IN OUTDOOR GFCI | WWP30

Wirelessly control outdoor outlets by simply plugging in, with GFCI protection for safety outdoors.



COLOR OPTIONS*



*Plug-ins only offered in white

CONNECT MORE

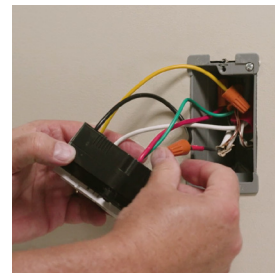
Connect your smart light switches with other smart devices in your home. Out-of-the-box compatibility enabled through Samsung Artik Cloud Services.



EASY INSTALLATION



1) Turn off breaker



2) Remove existing switch



3) Install Smart Switch



4) Connect to the App



Questions?

WE'RE HERE TO HELP

www.legrand.us/smartlighting
877-833-3303

FOLLOW US

