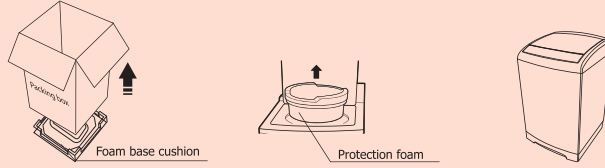


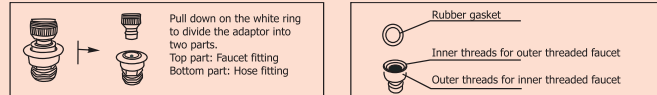
Unpacking and Removing Shipping Material

Remove the packing box and lift the washer up and away from the foam base cushion. Open the lid of washer to take out all accessories including protection foam.



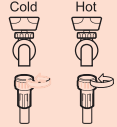
WARNING: Packaging materials can be dangerous to children. Keep all packaging material (plastic bags, polystyrene, etc.) well out of children's reach. Do not operate this appliance on the foam base cushion. Failing to do so will result in serious vibration.
After the machine is turned on, some water may remain inside. This is because each machine will be tested for performance on the production line. Before use, please try to clean up the residual water.

Installation of cold and hot water inlet pipes

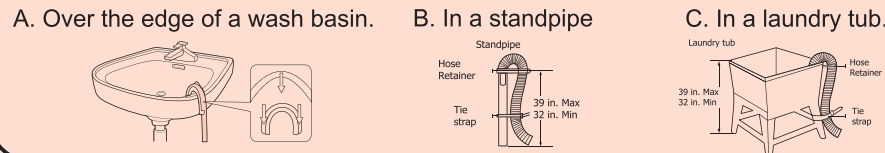


NOTE: When connected to a single faucet that can dispense either hot or cold water, both hot and cold water can be run through the cold water line for washing use. However, it is recommended to only run cold water washes when the adaptor is connected to such a faucet.

Connect the ends of the water supply hoses to the HOT and COLD faucets. For convenience, use the Quick Connection Adaptor for connection to the cold water faucet.



Position the other end of the drain hose



Pump filter clean

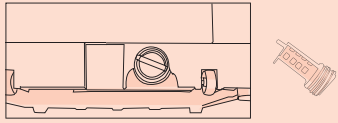
There is a built-in Pump filter in your washer. It can help to protect the pump during washing cycle.

It is suggested to clean the lint filter once every month.

It is suggested to clean the pump filter once every month.

Take the filter out and clean it with water.

Then place it back into the washer.

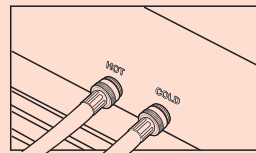


Tighten the fittings

Tighten the fittings by hand until they are snug, and then tighten them an additional two-thirds of a turn with a wrench.

WARNING: Confirm that the water supply hoses are not twisted or bent. If the hoses are twisted or bent, the hoses can leak and cause electric shock due to the water leakage. To ensure the correct water usage, connect both the HOT and COLD water faucets. If either or both are not connected, an error code can occur.

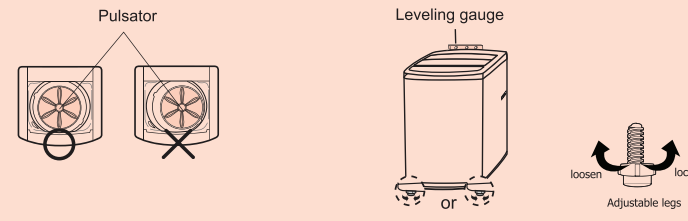
If you do not want to use the HOT water supply hose, install the water intake cap into the HOT water supply intake hole. In this case, you must select Cold water as the wash temperature choice. See Wash Temp in Control Panel section on page 23.



Leveling your washer

See if the washer is level by checking the position of the tub or using a leveling gauge.

- Slide the washer into position.
- Open the lid of the washer, and pour the water into the tub to just below the pulsator level.
- If the washer is level, the pulsator is positioned at the center of the washer as shown in the figure above right. If not, level your washer by turning the front leveling feet clockwise or counterclockwise as necessary.



Error Codes

Error Code	Possible Cause	Solutions
E1	It takes over 30 minutes to fill water but cannot achieve its preset water level.	Check for Washer not filling properly and Water leakage.
E2	It takes over 10 minutes to drain water but can not drain the washer empty.	Check for Washer will not drain water .
E3	The top lid is open.	Close the lid and Press the START / PAUSE button.
E4	The washer runs out of balance for three times.	Redistribute the load.
XX	Others	Please try again first, call up service line if there are still troubles.