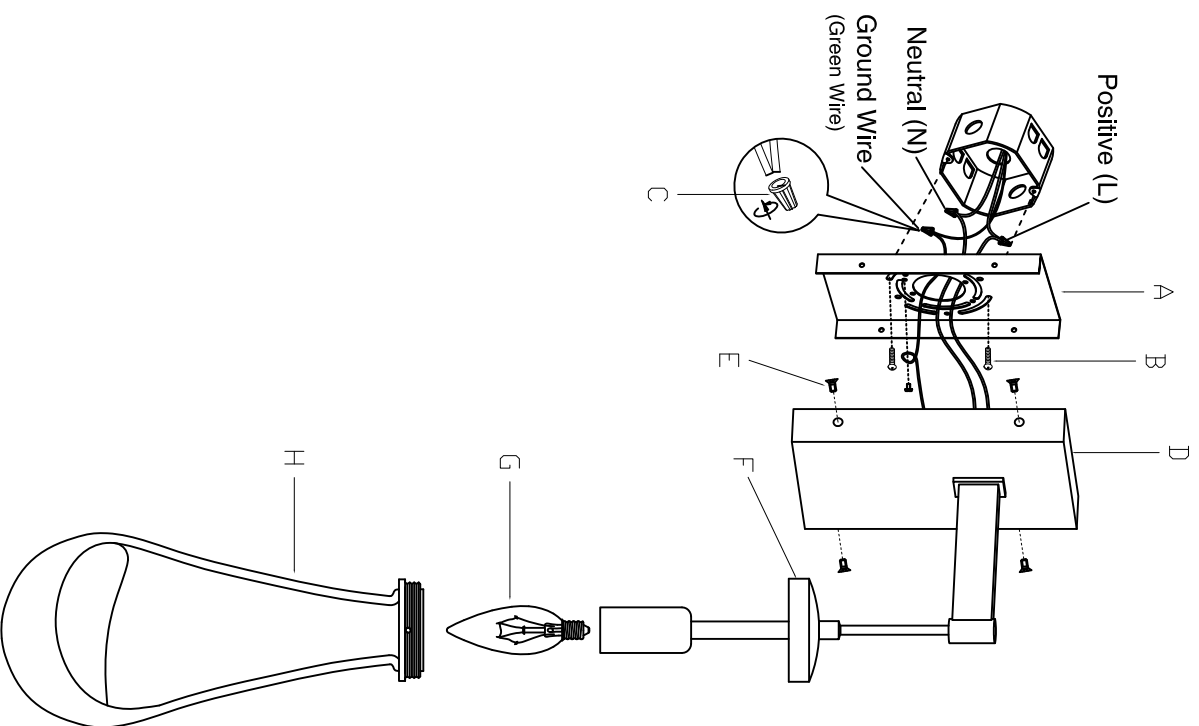


# L008008-H450-W1



- 1:Secure mounting plate (A) to the junction box using screw (B).
- 2:Connect the main wires to the fixture wires using twist-on wire connector (C).
- 3:Fasten wall base (D) to mounting plate (A) with screw (E).
- 4:Install light source (G) (Light source not included).
- 5:Screw the droplet-shaped cover (H) onto fixture body (F).