

# SharkBite

## Washing Machine Boxes

One-piece recessed box design provides quick quarter-turn shut-offs to water supply for washing machines. Mounting brackets allow box to be mounted to left, right or center of stud bay and do not require additional support framing, providing a solid installation. Left, right or center drain compatible. Available with optional water hammer arrestor to reduce noisy pipes.

### Features and Benefits

- Available with or without water hammer arrestors.
- Quarter-turn shut-off with 3/4 in. washing machine hose outlet.
- Snap-on faceplate accommodates up to 3/4 in. drywall.
- Left, right or center drain compatible.
- Compatible with PEX, copper, CPVC and PE-RT pipe.

### Applications

- Potable water

### Specification

The tube shall be inserted into the SharkBite PTC Fitting in the first stage through a release collar and then through a stainless-steel grab ring. The grab ring has teeth that open out and grip onto the tube. At the second stage the tube shall be pushed through an O-ring protector which aligns the pipe. A specially formulated EPDM O-ring shall be compressed between the wall of the fitting and the tube before the end of the tube reaches the tube stop. Only when the pipe has passed through the O-ring and reached the pipe stop shall a secure joint be created. The fitting shall be a SharkBite PTC Fitting. The fitting shall be a SharkBite PTC Fitting.



side view



#24763

## Specification Data

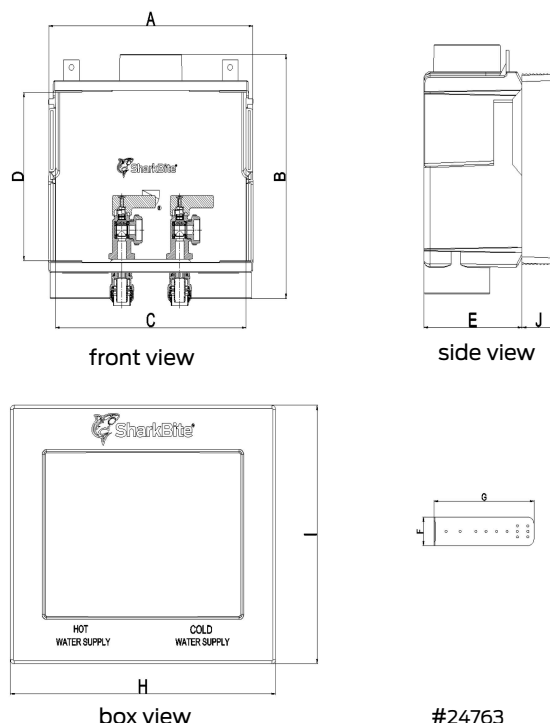
### Performance

Minimum working temperature	33°F
Maximum working temperature	160°F
Maximum working pressure	125 psi

### Material

1 Outlet box	ABS
2 Valve Screw	SST
3 Valve Spindle	DZR LF Brass <sup>1</sup>
4 Valve Handle	Zinc
5 Valve O-ring	EPDM
6 Valve Body	DZR LF Brass <sup>1</sup>
7 Valve Seat	PTFE
8 Valve Ball	DZR LF Brass <sup>1</sup>
9 Valve Lock Nut	ABS
10 Valve End Plug	

<sup>1</sup> Lead Free for all models, surfaces that are in contact with consumable water contain less than 0.25% lead by weight



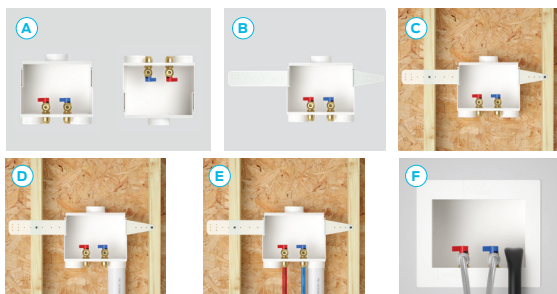
### Dimensions

Description	Part #	A	B	C	D	E	F	G	H	I	J
1/2 in. PTC X 3/4 in. GHT	24763	8.38	8.46	7.81	5.83	3.75	1.95	7.67	10.15	8.79	1.21
1/2 in. PTC X 3/4 in. GHT with Water Hammer Arrestor	25031	8.38	8.46	7.81	5.83	3.75	1.95	7.67	10.15	8.79	1.21
Washing Machine Box Replacement Faceplate	25464								10.15	8.79	1.21

All measurements are displayed in inches

### Installation Requirements

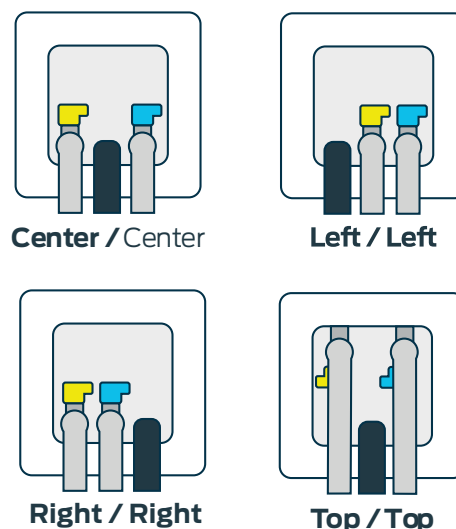
- Turn off and fully drain water supply to involved piping.
- Nail the outlet box to the wall stud using the molded-in support flanges. For mounting to metal studs, use sheet metal screws (Figure A).
- Connect water distribution lines (Figure B) to the SharkBite Push-Fits. SharkBite Push-Fits can connect to copper, CPVC or PEX pipe.
- Secure or brace supply line into place to prevent movement.
- After sheetrock is installed, press faceplate into place (Figure C).
- Secure the water supply line to the valve and attach to appliance (Figure D).
- When ready for use, turn on the water supply. Check for hose leaks at valve.



### Insertion Depth

Fitting Size	Nominal Pipe Size	Pipe OD	Insertion Depth(in)
1/2 in.	1/2 in. CTS	5/8 in.	0.95

### Multiple Installation Options



## Pipe Type

Tubing: Hard drawn copper pipe Type K, L and M and annealed Type M not to exceed 3/8 nominal complying with ASTM B 88, PEX tubing complying with ASTM F 876 or CSA B137.5, or CVPC tubing complying with ASTM D 2846 or CSA B137.6, PE-RT complying with ASTM F2769 or CSA B137.18

## SharkBite Fitting Reuse

SharkBite Universal fittings are intended to be a permanent connection and are not designed for repeated connection and disconnection after the initial install.

## Codes and Standards

ASME A112.18.6

CSA B125.6

NSF/ANSI/CAN 61

NSF/ANSI 372

