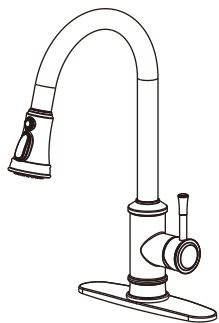
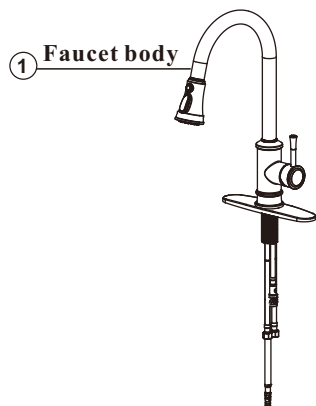
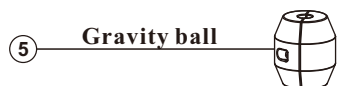


Installation instructions

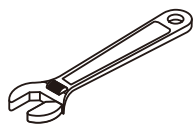


FOR FAMILIES
3 MODES FOR MOST FAMILY USE
FOR CONVENIENCE
PULL-DOWN DESIGN WITH GRAVITY BALL
FOR THE SAKE OF AESTHETICS
THE FUSION OF CREATIVITY FROM
DESIGNER TEAM

Parts included



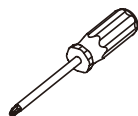
Tools you may need



Adjustable wrench



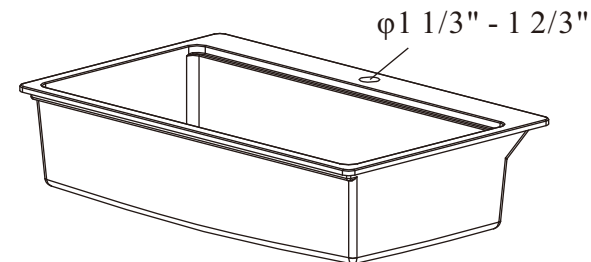
Safety glasses



The screwdriver

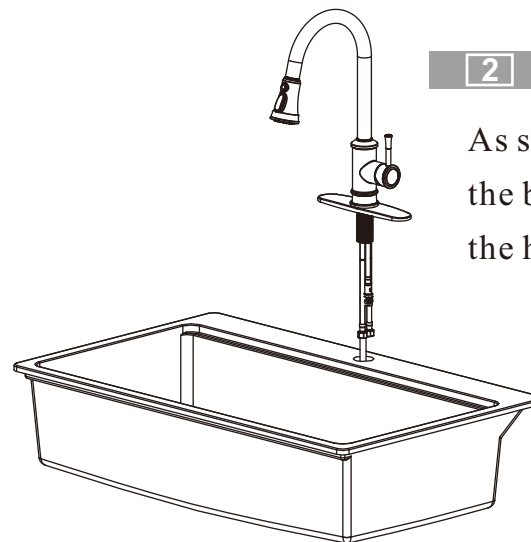
1

Before installation, make sure
installation hole diameter
is 1 1/3" - 1 2/3"



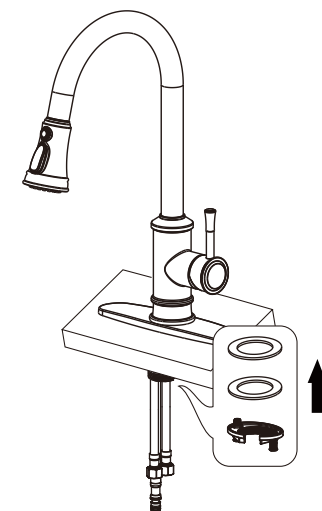
2

As shown in the picture, take out
the basin faucet and place it into
the hole of the ceramic basin.



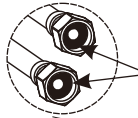
3

Place the rubber ring, stainless steel gasket
and lock nut on the tap successively from
under the table as shown.

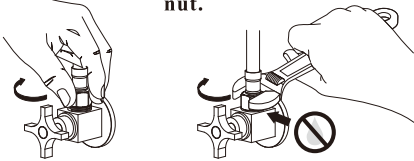


4

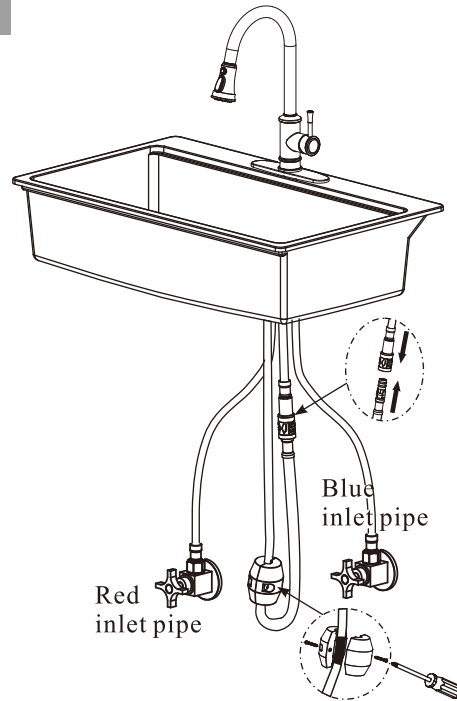
Install the gravity ball onto the faucet hose as shown in the picture (make sure the hose is not twisted). Then connect the cold and hot water pipes onto the angle valve respectively and tighten them using a wrench.



Before installing the inlet pipe, please check whether the gasket is placed on the nut.

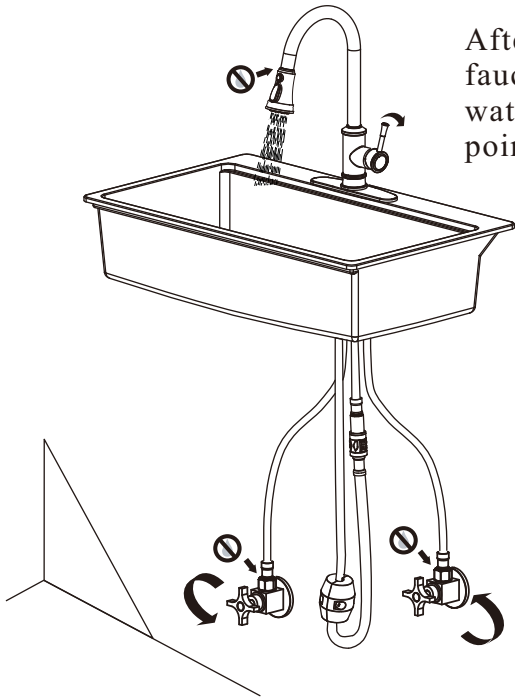


Tighten the nuts manually and then reinforce them with tools.



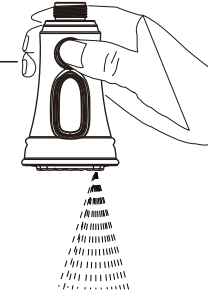
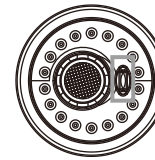
5

After installation, turn on the basin faucet (turn the handle) and test the water flow. Check each connection point for leaks.

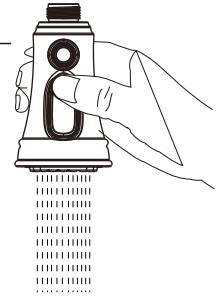
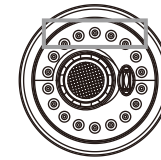


3 Modes

SPRAY



RAIN



STREAM

