

Setup Instructions

1



Bait

Spread peanut butter on underside of lid, then sprinkle grass and sunflower seeds into bucket

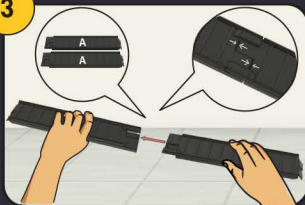
2



Attach Lid

Attach on top of a standard 5 gallon / 20 liter bucket

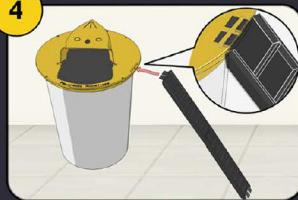
3



Assemble Ramp

Snap the two identical ends together to form 1 solid piece

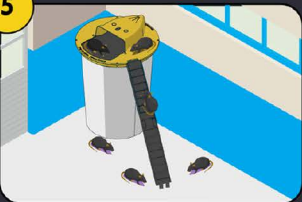
4



Attach Ramp

Push ramp tabs fully through the slot located on the lid

5



Place Trap

Place trap along walls or where mice activity is known
Check Daily

6



Release

Remove plank and gently release mice back into the wild

Manufactured by: Rinne Corp, Inc.

2141 Whitfield Park Dr
Sarasota, FL 34243

Visit us at www.RinneTraps.com

Questions/Comments/Concerns:

Support@Rinnecorp.com

