

# US RealPost™ Handling and Installation Instructions

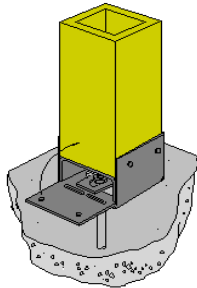


## Storage and Handling

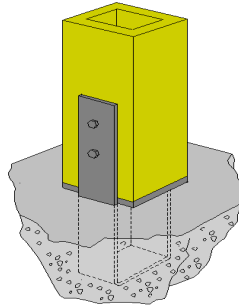
- Place the first set of wood strips on a level dry surface. Material should be supported 4" above the ground to allow for free air movement and to prevent contact with ground moisture.
- Space wood strips a maximum of 6' apart. Stack wood strips directly above one another. Maximum storage height of 10' is recommended.
- All post ends are factory sealed to prevent water damage. Trimmed material will require end sealing with an alkyd-oil primer or equivalent.
- Material wrap is slippery when wet or frozen, to prevent injury do not allow workers to walk on bundles.
- Store all products wrapped in the original wrapping.
- Do not re-wrap wet material.

## Installation

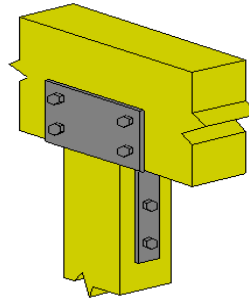
Raised Base Connection



Column Base Connection



Column Cap Connection



**NOTE:**

Simpson Strongtie ABU/ABW connector Shown in the example to the left. We recommend using connector products from one of these three companies:



- RealPost™ is intended for axial loading only.
- Column bases and Column caps are required when the column has been designed for use in an uplift application. Simpson Strong Tie products or equal are to be used. Refer to the hardware manufacturer's instructions for capacities and connector attachment.
- For vertical load only applications a nailed connection can be implemented. Toe-nail the column to the supporting structure as follows:
  - 4x4 and 6x6 Columns 1-8d x 2½" nail per column face for a total of 4 nails at the bottom and 4 nails at the top.
  - 8x8 Columns 2-8d x 2½" nails per column face for a total of 8 nails at the bottom and 8 nails at the top.
- Where the column is in close contact with the foundation or soil a column base is to be used to raise the column a minimum of 1" above the foundation or 6" above the soil.
- It is recommended that all connector holes be pre-drilled.
- Through-bolting is not permitted on structural connections on RealPost™. Pilot holes are required for lag screws, and the Maximum permitted lag screw diameter is ½".
- Nail and screw applications are subject to the specifications published in NDS 2005 for the applicable wood species used in RealPost™, as referenced in the 2006 International Building Code.
- Notching of load bearing RealPost™ is permitted only with prior approval from Woodtone.
- RealPost™ is intended for use in dry service conditions. These are conditions where the equilibrium moisture content of the wood is less than 16%. RealPost™ products used in exterior construction in protected or semi-protected locations such as under roof or porch canopies or overhangs, or in locations where it is wet for short periods of time will typically have an equilibrium moisture content of not more than 16% and may be used.
- Any cut or application method that exposes the void space in the center, must be filled with a shim, or flashed with galvanized flashing or sealed with exterior latex caulk to prevent moisture from entering this space.
- RealPost™ products are manufactured with Western SPF, they are also available in Red Cedar and Douglas-fir (Fir-Larch).
- Hole sizes shall be limited to ¾" diameter for 6x6 and 8x8 posts. Holes shall be centered on the post and spaced vertically at least 8" apart for multiple holes. Holes in addition to those required for installation of approved column caps and bases are not permitted within 8" of the top or bottom of the post.
- To ensure lasting durability and to prevent moisture damage RealPost™ needs to be top-coated with two coats of a 100% acrylic latex exterior coating. Contact Woodtone directly with any painting questions.
- Trimming to length on site is permitted. The trimmed end shall be re-sealed prior to installation. Ensure all cuts are square and straight.
- It is the responsibility of the building designer to ensure that all building codes and local jurisdiction requirements are met.
- Contact Woodtone for all other inquiries.

8007 Aitken Road  
Chilliwack, British Columbia  
Canada, V2R 4H5

Telephone 604 792 3680  
Facsimile 604 792 3976  
www.woodtone.com

**WOODTONE™**

always there, naturally

## Factored Load Tables for the United States



### Notes

Allowable Axial Loads for RealPost  
Unit of Measure: Pounds (lbs)

			4X4		6X6		8X8
			lbs		lbs		lbs
<b>WRC</b>	<b>SS</b>	<b>8 FT</b>	N/A		10,313		10,313
		<b>10 FT</b>	N/A		8,579		8,579
		<b>12 FT</b>	N/A		7,007		7,007
<b>Dfir</b>	<b>#2</b>	<b>8 FT</b>	4,565		12,390		18,281
		<b>10 FT</b>	3,320		10,547		16,543
		<b>12 FT</b>	2,502		8,838		14,893
<b>SPF</b>	<b>#2</b>	<b>8 FT</b>	3,677		10,391		16,211
		<b>10 FT</b>	2,623		8,516		14,355
		<b>12 FT</b>	1,938		6,866		12,578

8007 Aitken Road  
Chilliwack, British Columbia  
Canada, V2R 4H5

**Telephone** 604 792 3680  
**Facsimile** 604 792 3976  
[www.woodtone.com](http://www.woodtone.com)