



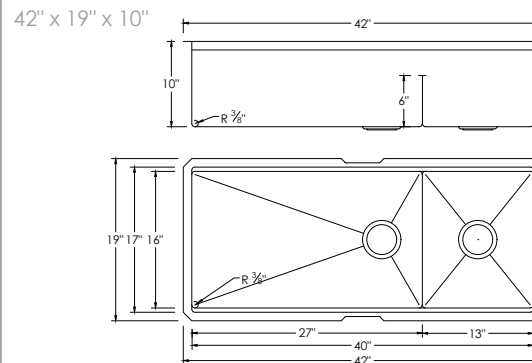
# VERSA42

## S-642W

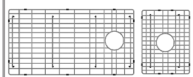
STAINLESS STEEL  
HANDMADE 70/30 DOUBLE BOWL KITCHEN SINK



### DIMENSIONS



### INCLUDED ACCESSORIES



G-642  
GRIDS



ST-03  
STRAINERS



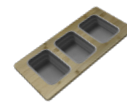
A-02  
COLANDER



A-902DG  
DRYING RACK



A-906  
CUTTING BOARD



A-908  
SERVING BOARD

### RECOMMENDED ACCESSORIES



A-912  
CUTTING BOARD



S-01S  
SOAP DISPENSER

### SURFACE FINISH

BRUSHED SATIN FINISH

### CORNER PROFILE



RADIUS 10mm

### INSULATION

COATED + RUBBER PADS

### SIDE DRAIN HOLE

CABINET SPACE SAVER

### BOWL DEPTH



### INSTALLATION OPTIONS



UNDERMOUNT

### MATERIAL

Premium 16 gauge stainless steel with 18/10 chrome-nickel content. The 18% of chrome content provides durability, maximum protection against rust and a beautiful satin finish. The 10% of nickel content provides excellent strength and hardness.



16 GAUGE  
STAINLESS STEEL

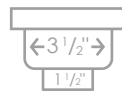
### PRODUCT DIMENSIONS

Overall Dimensions	42" x 19" x 10"
Internal Dimensions	40" x 17" x 10"
Left Basin	27" x 17" x 10"
Right Basin	13" x 17" x 10"
Drain Opening Size	3 1/2"

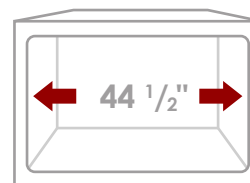
### DRAIN HOLE SIZE



### LUXURY BASKET STRAINERS



### CABINET SIZE



MINIMUM  
INTERNAL SIZE

### GARBAGE DISPOSAL

Stylish® sinks have on standard 3 1/2" drain opening that can fit any garbage disposal unit. The sink structure is well designed to withstand any heavy garbage disposal unit.



### WARRANTY

This product is covered by a limited lifetime warranty. Consult our website for complete details.

### PRODUCT CARE

Rinse and dry your sink with a clean soft cloth, working with, not a cross, the grain. We recommend the use of a mild solution of water and vinegar to remove any mineral deposits that may have built up on your sink. Use mild non-abrasive liquid cream cleaners that do not contain chlorine, sodium hypochlorite or hydrochloric acid to help maintain the original appearance of your sink. Ensure that you thoroughly rinse your sink and wipe it dry. We recommend the use of a stainless steel grid that fits inside the bottom of the sink bowl and protect the sink from scratches.



### STANDARDS COMPLIANCE

cUPC certified  
ISO 9001 certified

Stylish International Inc.

[www.stylishkb.com](http://www.stylishkb.com)

[stylish.international.inc](mailto:stylish.international.inc)

[care@stylishkb.com](mailto:care@stylishkb.com)

+1-855-789-5352

Products and specifications shown are subject to change without notice. Please contact our technical support at [care@stylishkb.com](mailto:care@stylishkb.com) for any further queries, replacement parts requests, etc. ©2022 Stylish® all right reserved.