

### SAFETY PRECAUTIONS

*\*Before installing, please read the following carefully:*

- Wear safety glasses at all times and use cut-resistant gloves when using a utility knife.
- Each carpet tile has three removable peel-off backing strips protecting the adhesive side of the carpet tile. During the installation process, dispose of the peel-off backing strips in a waste container once you remove them from the carpet tile. Backing strips tend to be very slippery and may cause someone to slip or fall.
- Cut away from yourself on a cutting mat or scrap board for any trimming.

### PREPARATION

- 1) Check to make sure the carpet tiles you received reflect what you ordered. It's important to us that you're satisfied with your purchase.
- 2) Make sure your existing floor is dry and clean and the air temperature is at least 50°F. Vacuum floor thoroughly.
- 3) If your floor is painted and bonded well to the floor, you can apply Peel & Stick Carpet Tiles directly on the painted surface. If you're unsure the paint is well bonded to the floor, conduct a very quick and simple test to find out:

*TEST: First, take a piece of aggressive sticky tape, such as duct tape, and press the tape down firmly on the painted surface, keeping one end of the piece of tape in your hand. Then, pull the tape up quickly. If the paint comes off with the tape, the paint is not well bonded and your floor will need to be stripped before applying Peel & Stick Carpet Tiles. If the paint doesn't lift off with the tape, the paint is well bonded to the floor. Test several areas of the floor to ensure the entire floor is suitable to install the carpet tiles.*

- 4) Although installing Peel & Stick Carpet Tiles is very simple, we recommend you use a few tools to make your experience easier and your finished product more precise. To cut the carpet tile, we like to use the Stanley® carpet knife #10-525 (be sure to have a supply of sharp blades). A 24-inch carpenter's square can help, as well as a tape measure and a chalk line to align your carpet tiles. Please be sure to follow tool manufacturer's directions and safety instructions.

### TOOLS NEEDED

- Utility or Carpet Knife
- Supply of Sharp Blades
- Cutting Mat
- Chalk Line
- Tape Measure
- Waste Container

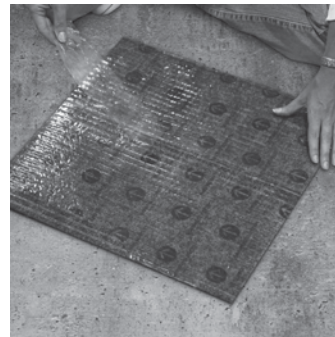
### INSTALLATION FOR FLOOR AREAS AND WALL-TO-WALL

#### Peel & Stick Carpet Tiles Unique Pattern Features

Each carpet tile comes with a single tear sheet on the back and a directional arrow sticker on top to aid in installation.

Once you know the desired position of the tile, remove the backing sheet and press tile into place on floor. The arrow sticker on top of the carpet tile indicates the direction of the nap in the carpet. Carpet tile will appear to be different in color from each other when arrows are not run in the same direction of the desired design. Be sure arrow on the carpet tile faces the desired direction.

### HOW TO APPLY CARPET TILES



Remove peel-off backing and slide carpet tile into position on the floor.



Press down firmly in desired location. This will lock the tile in that position. Continue to place tiles in desired pattern, rotating 1/4 turn. It's that easy!

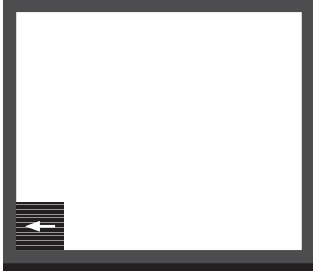
**USING ONE COLOR TILE:** If you're using only one colored tile for the entire room, make sure the tile's arrow you place on top of the prior row is at a 1/4 turn. (Fig. E)

**USING TWO OR MORE COLOR TILES:** If you're using two or more colored tiles, make sure the tile's arrow you place on top of the prior row is a different color to create the desired pattern (Fig. F)

**Important Note:** Be sure the arrow on top of the carpet tile is in the direction of the desired pattern at all times. Leave all arrows on top of carpet until you have completely finished the floor. Remove arrows once you inspect to make sure arrows are in the desired direction.

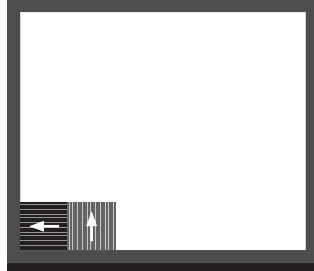
### FOR GARAGE INSTALLATION

Fig. A



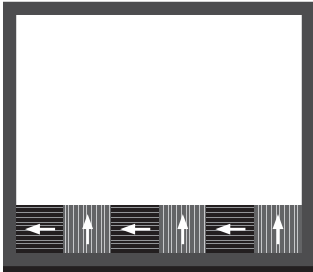
Front of Garage

Fig. B



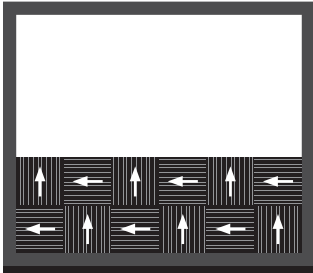
Front of Garage

Fig. C



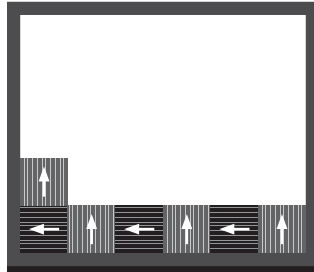
Front of Garage

Fig. E



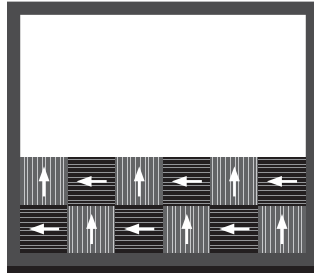
Front of Garage

Fig. D



Front of Garage

Fig. F



Front of Garage

### FOR ROOM INSTALLATION

Fig. G

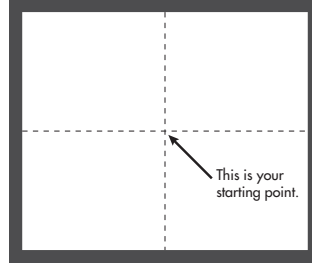


Fig. H

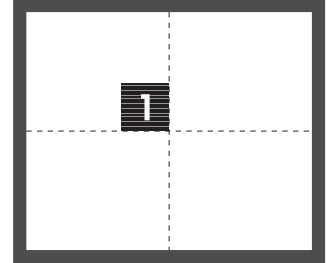


Fig. I

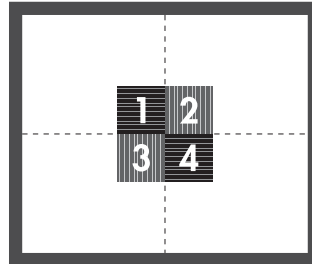


Fig. J

