

DESCRIPTION

- Metal and brass construction with Chrome plated finish, also in Classic Brushed Nickel (CBN) finish
- Pressure balancing cycle valve
- Contains: hand-held shower, with non-positive pause, 30" slide bar, drop ell, vacuum breaker, 69" metal hose and mounting hardware
- **Slide bar is NOT DESIGNED TO BE A GRAB BAR**
- Supplied with vandal resistant screws
- Quick cleaning rubber nozzles

OPERATION

- Temperature valve has ADA compliant lever style handle
- Handle operates counterclockwise through a 270° arc with off at 6 o'clock, and maximum hot at the 9 o'clock position. Shut off in clockwise direction
- Adjustable temperature limit stop
- Pressure balancing mechanism maintains selected discharge temperature to $\pm 3.6^\circ$
- Single function spray pattern
- Easy to operate pause button (reduces the flow of water to a trickle)

FLOW

- **T8346** (2.5gpm/9.5 lpm) - Chrome finish
- **T8346CBN** (2.5gpm/9.5 lpm) - CBN finish
- **T8346EP15** (1.5gpm/5.7 lpm) - Chrome finish; **WaterSense® Certified**
- **T8346EP15CBN** (1.5gpm/5.7 lpm) - CBN finish; **WaterSense® Certified**

CARTRIDGE

- Pair with a brass Posi-Temp rough-in valve:
- 8370HD*: 1/2" CC connection without integral stops
- 8371HD*: 1/2" CC connection with integral stops
- 8372HD*: 1/2" IPS connection with integral stops
- 8373HD*: 1/2" PEX connection with integral stops
- 8374HD*: 1/2" CPVC connection with integral stops
- 8375HD*: 1/2" UPONOR connection with integral stops
- *Includes the 1222HD Brass Posi-Temp Cartridge
- Accommodates back to back installations

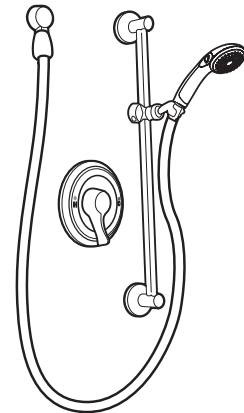
STANDARDS

- Third party certified to WaterSense® (only applies to 1.5 gpm)
ASME A112.18.1/CSA B125.1 and all applicable requirements referenced therein

- **ADA**  for lever handle

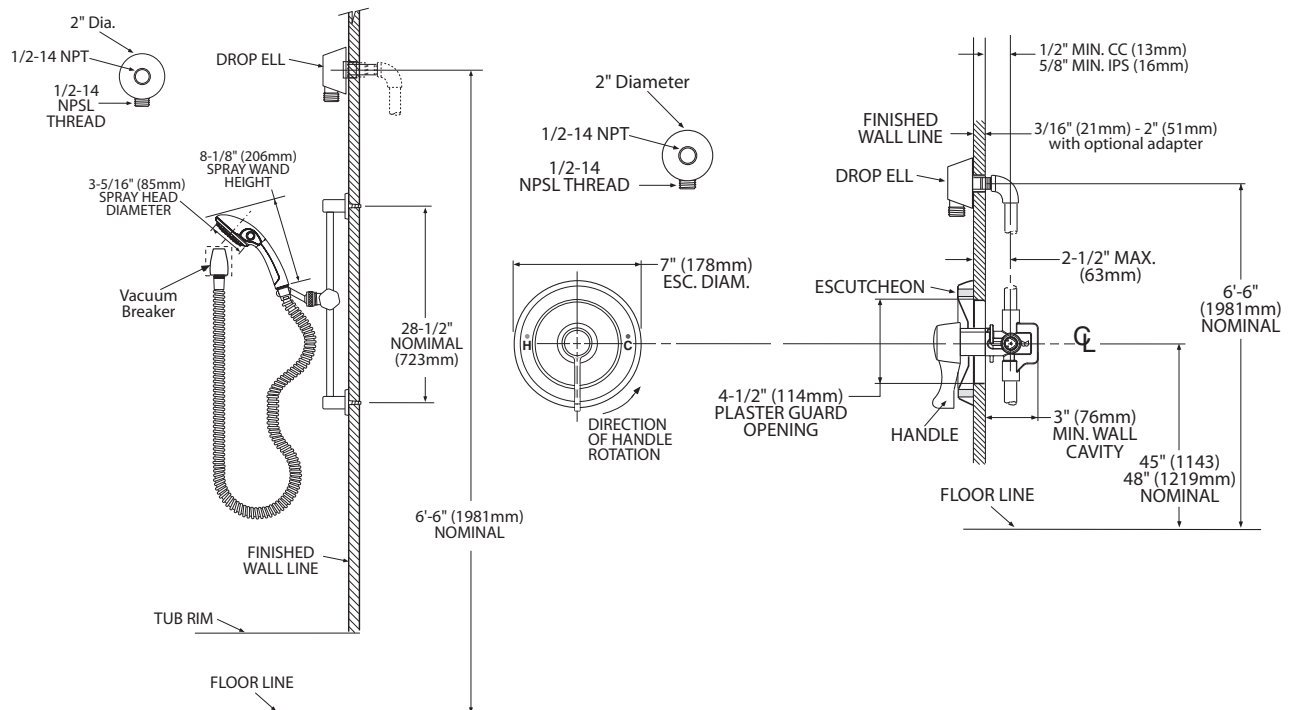
WARRANTY

- Warranted for 5 years against material or manufacturing defects



Single-Handle Posi-Temp Handheld Shower System

Model: T8346, T8346CBN



*Refer to (ADAAG) guidelines or local codes for proper ADA installation.

CRITICAL DIMENSIONS

(DO NOT SCALE)

DESCRIPTION

- Brass construction
- 1/2" CC or IPS Uponor connections (with 1/4 turn)
- Pressure balancing, four port, cycle valve

OPERATION

- Adjustable temperature limit stop to control maximum hot water temperature
- Pressure balancing mechanism maintain selected discharge temperature to $\pm 3.6^{\circ}\text{F}$

CARTRIDGE

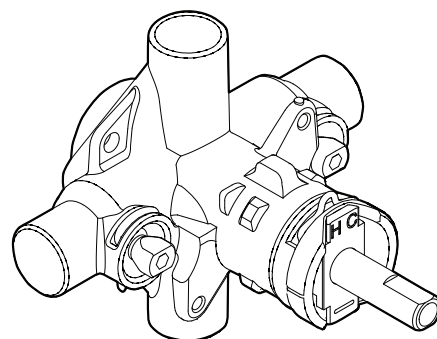
- 1222HD brass cartridge design
- Brass construction stainless steel materials
- Accommodates back to back installations

STANDARDS

- Third party certified to: ASME A112.18.1/CSA B-125.1 and all applicable requirements referenced therein including NSF61/9
- Moen's Posi-Temp® and Moentrol® valves with graphite composite spools combined with Moen's Eco-performance showerheads meet the performance requirements of pressure and temperature variation of ASSE1016 when tested as low as 1.5 gpm

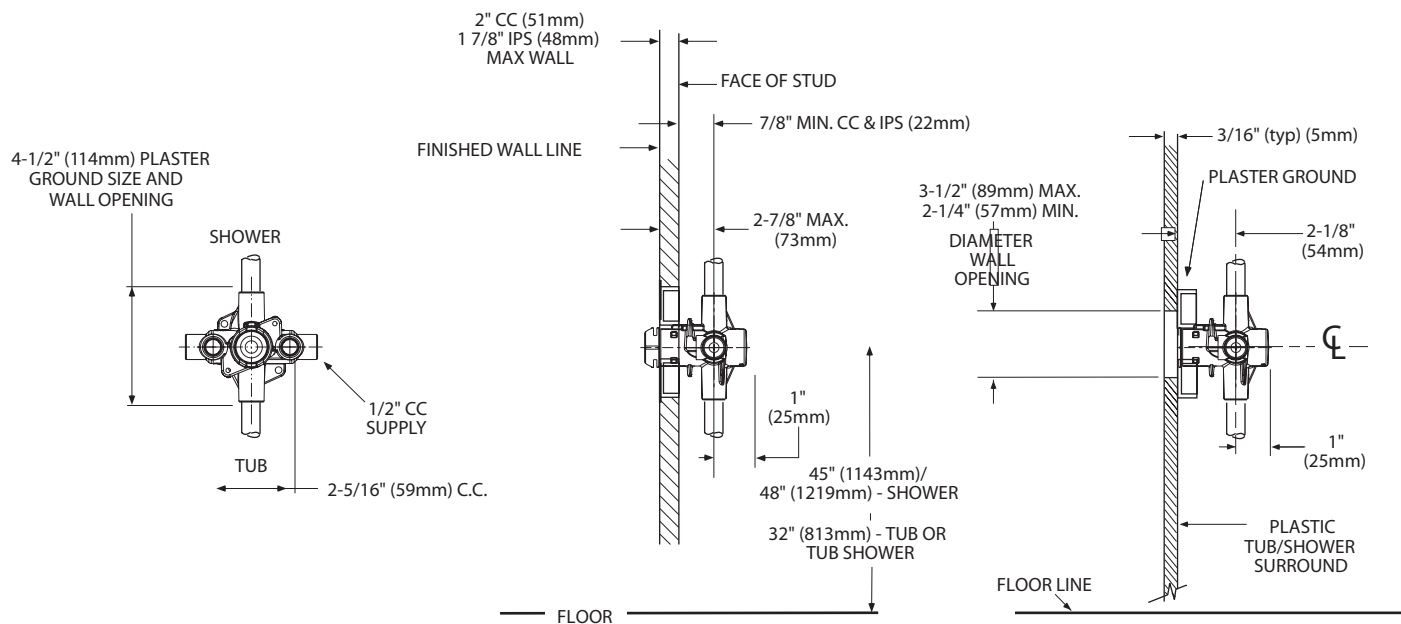
WARRANTY

- Warranted for five years against material or manufacturing defects



POSI-TEMP® VALVE Pressure-Balancing Valve with 1/4 Turn Stops

Models: 8370HD (CC) without 1/4 Turn Stops,
8371HD (CC), 8372HD (IPS), 8375HD (Uponor)



CRITICAL DIMENSIONS

(DO NOT SCALE)