

(MH-CH-713)



ASSEMBLY INSTRUCTIONS

Do not throw away the packaging material until the assembly is complete.

To protect the product, assemble this item on a soft surface such as a cardboard or a carpet.

While assembling the product, first tighten the screws up to 50%. Once all parts are in place, only then fully tighten the screws!

CARE INSTRUCTIONS

Wipe only with a soft & dry cloth.

To protect product, avoid the use of chemicals and household cleaners.

Any liquid spilled on the product should be cleaned up immediately with a damp cloth.

PRODUCT PARTS

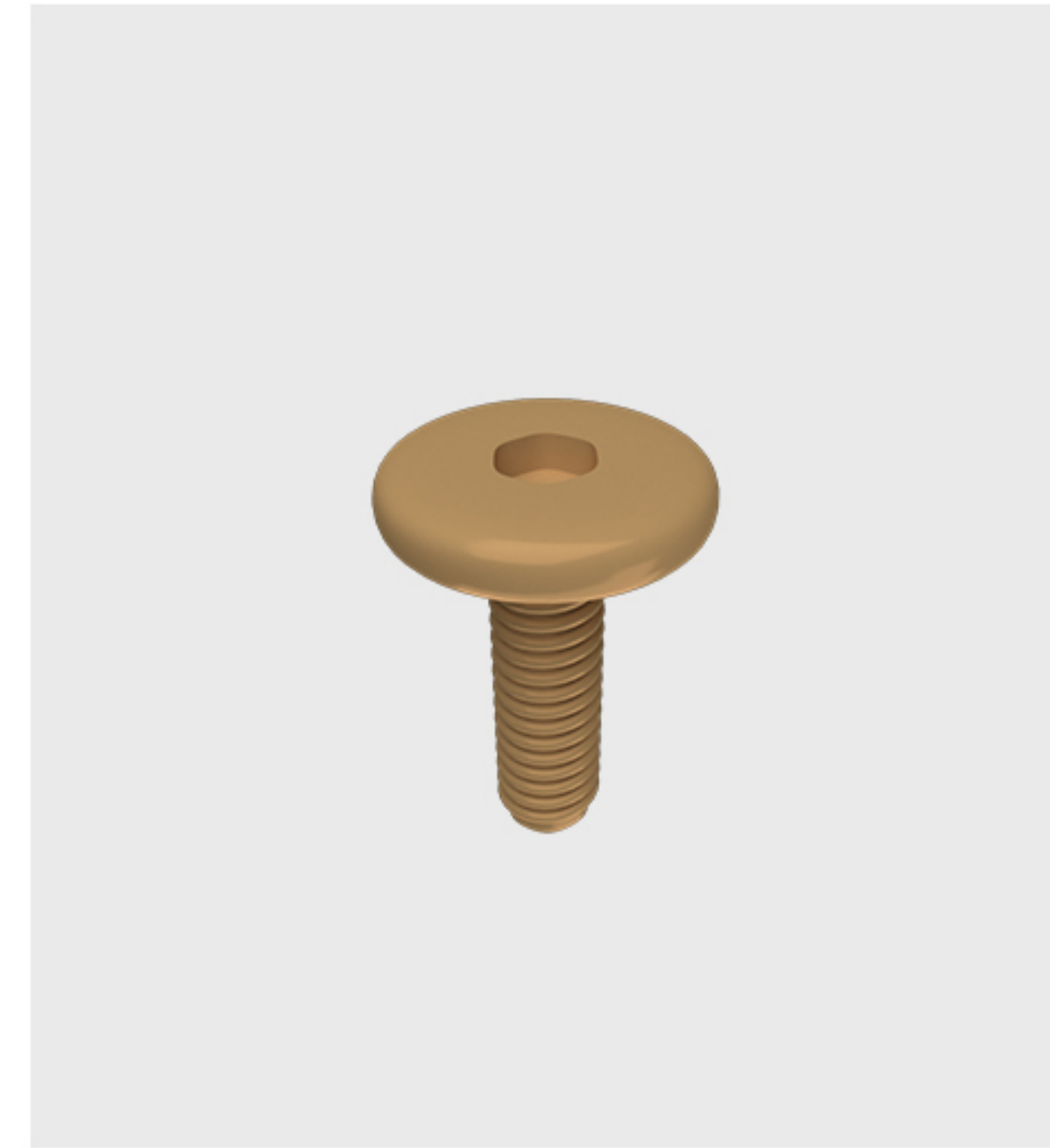


A
Chair top



B
Chair legs

HARDWARE PROVIDED

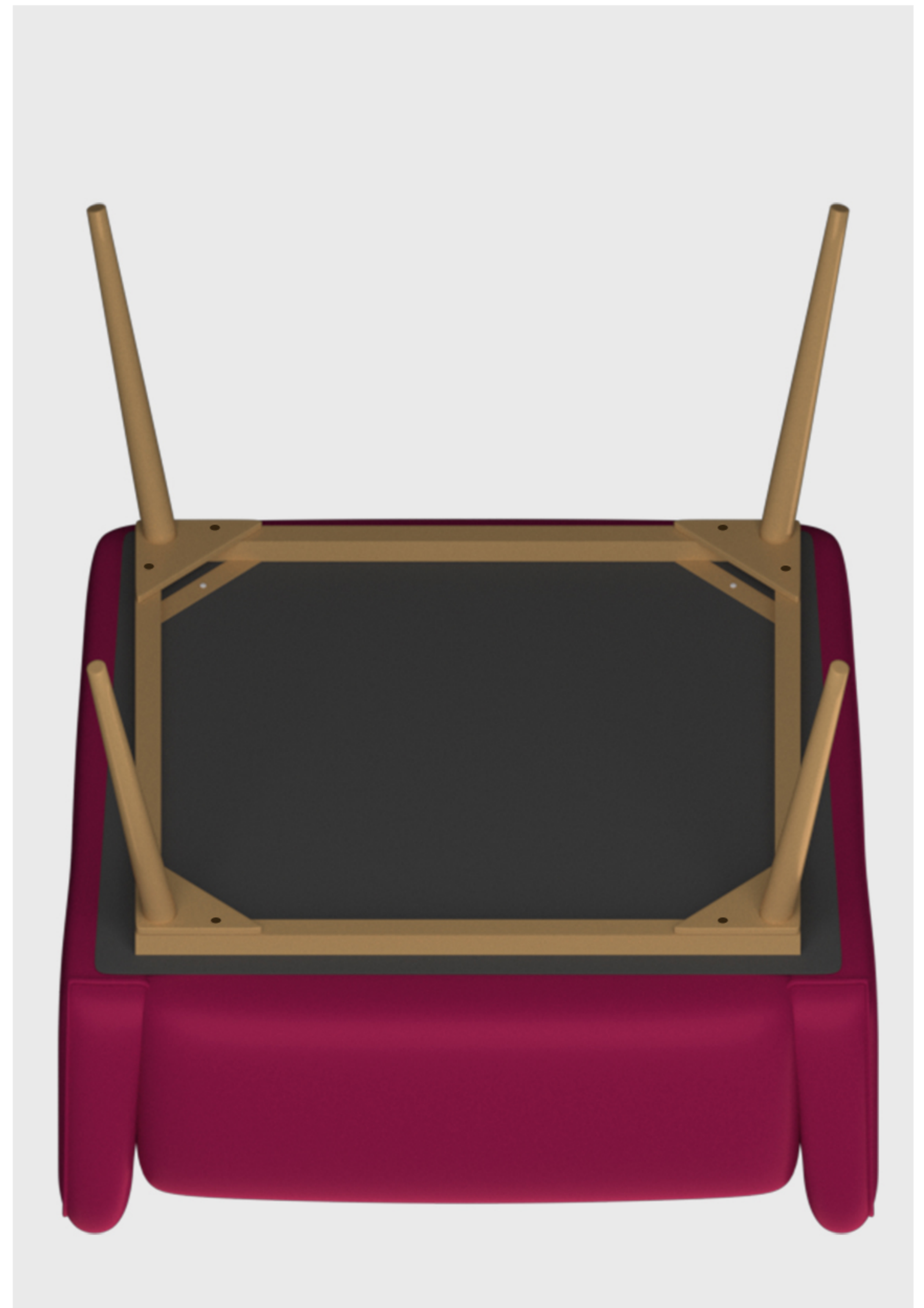
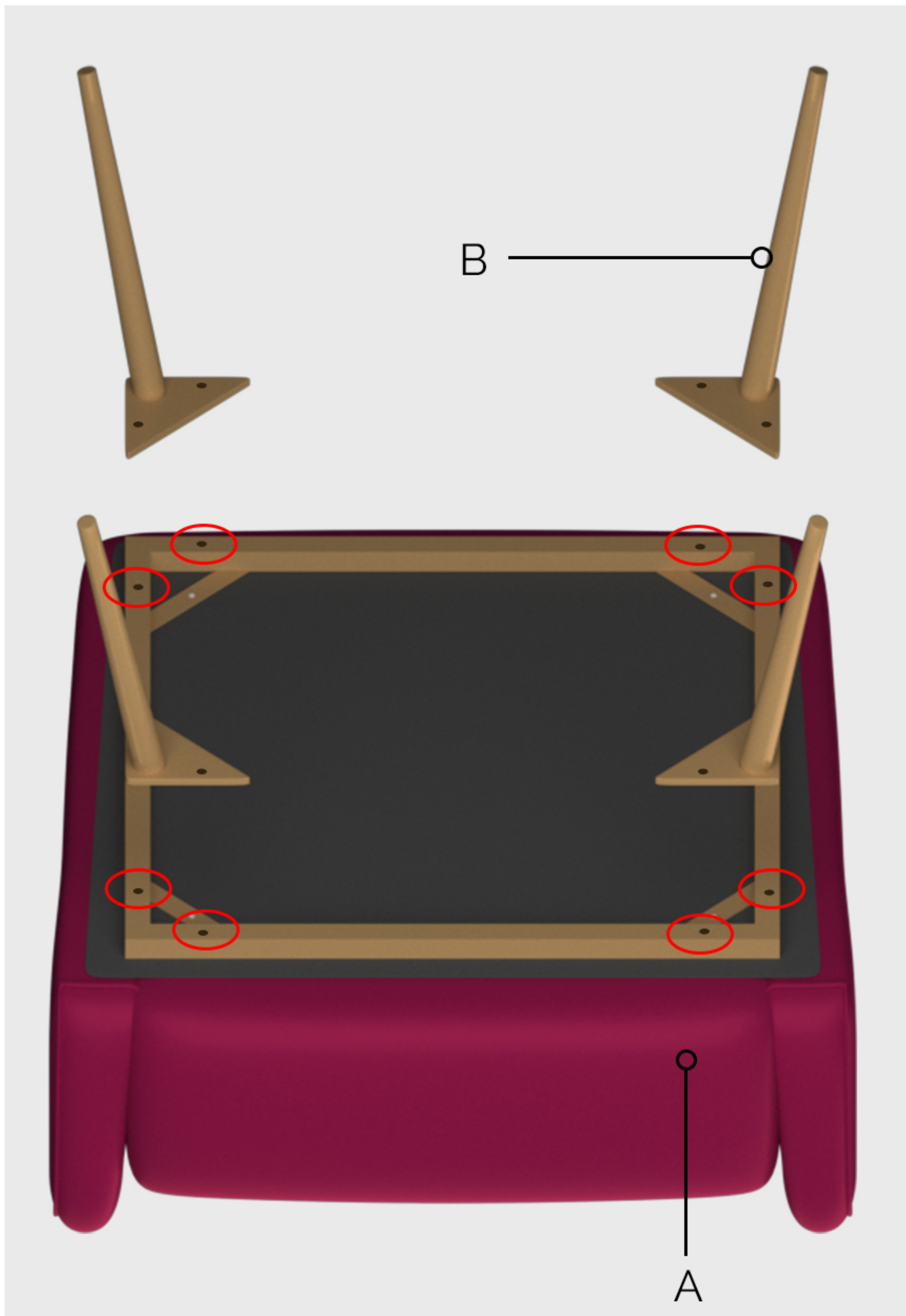


C
Screw
6x16mm
8x



D
L key
6x mm
1x

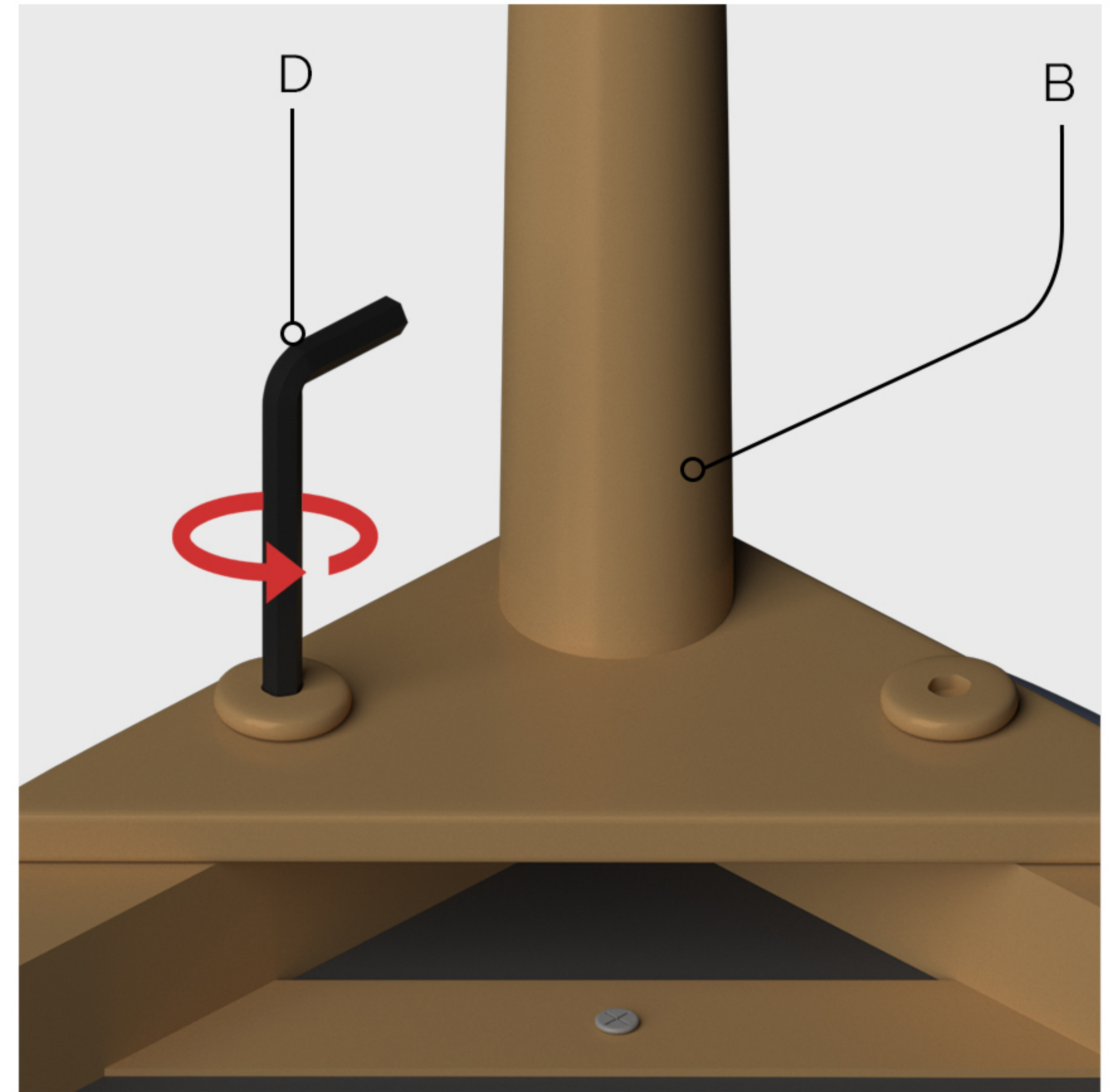
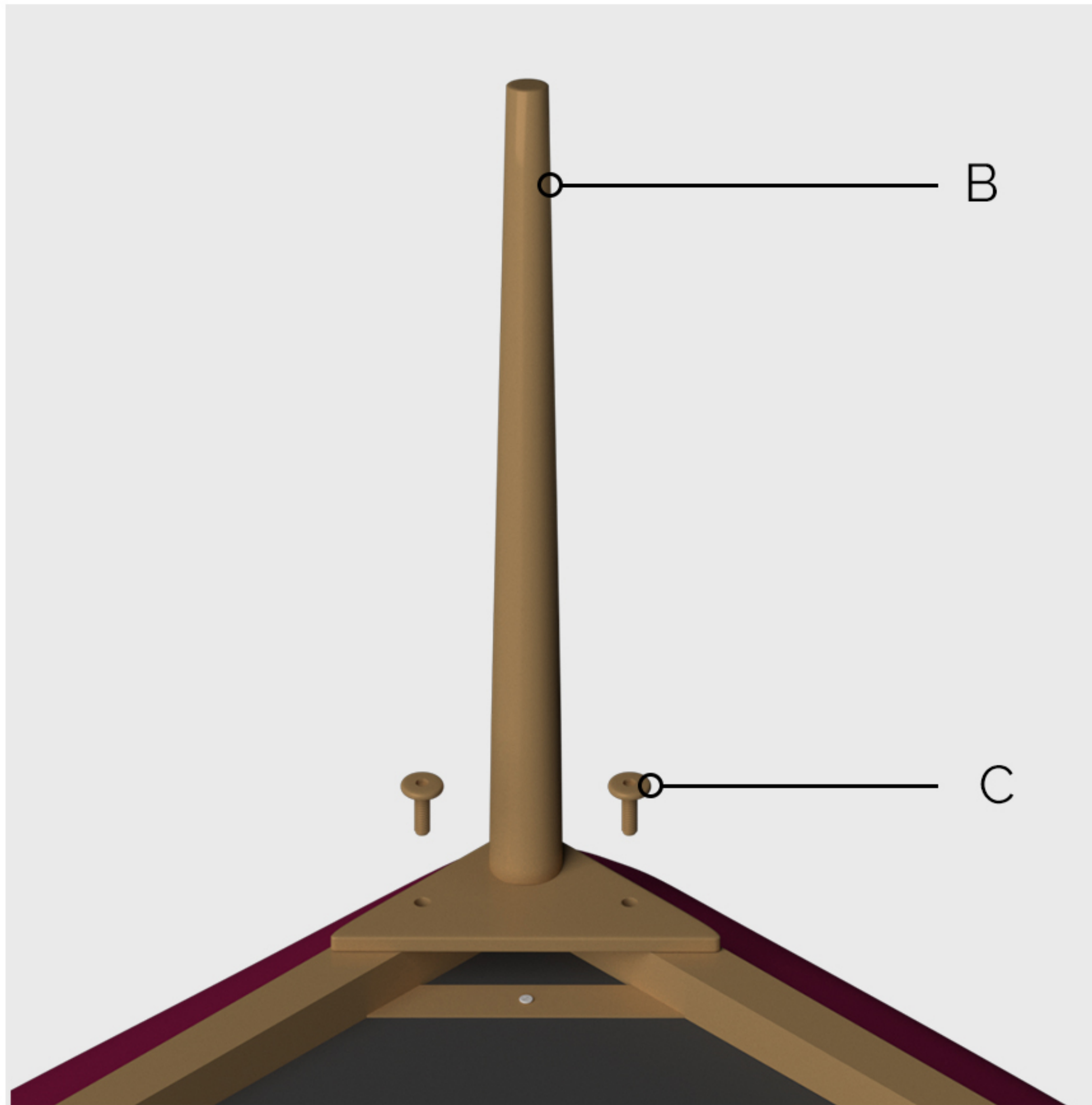
STEP 1



Turn the Chair Top (A) upside down and align the Chair Legs (B) as highlighted in the image above.

STEP 2

Note - While assembling the product, first tighten the screws up to 50%. Once all parts are in place, only then fully tighten the screws!



Using the L key (D), tighten all the Screws (C) in holes of the legs as shown above.

