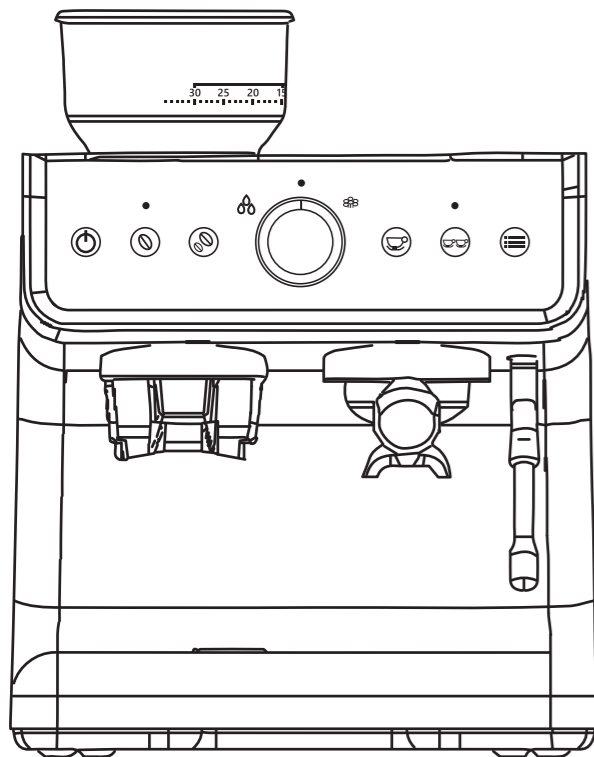
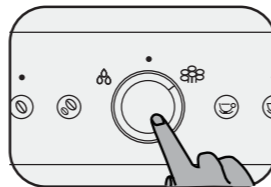


SKU: CM002-15ASI-USZX



• Under the standby mode, turn the knob to "☕", the machine enters into steam-making mode, at that time, hot water indicator flashes and the appliance starts to make steam. Turn the knob to "•" position, the machine stops making steam and enters into the standby mode.



Note:

**If the bean hopper is not installed, the Single-cup (Grind) and Double-cup (Grind) indicators will light up solid red, and the buzzer will sound three beeps.*

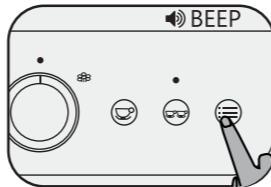
**Read the manual to get specific operations to customize the grind time and coffee dose of single-cup to suit different flavor preferences.*

**The machine will automatically enter sleep mode after 15 minutes of inactivity in standby mode. To reactivate the machine, simply press any button or turn the knob. The machine will then enter the preheating state.*

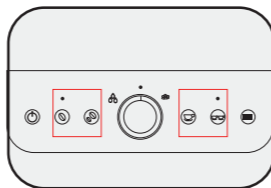
4. Customized Extracting Temperature

You can customize the coffee extraction temperature within a range of 194°F to 205°F (90°C to 96°C), adjustable in 2°C increments, to suit different flavor preferences:
Higher temperature: Increases bitterness, reduces acidity
Lower temperature: Decreases bitterness, enhances acidity

• Press and hold the Program button for **4 seconds** until a beep sounds and the Program indicator begins flashing.



• Select your desired temperature by pressing one of the following buttons:
Single-cup (Grind) button: Set to 194°F (90°C).
Double-cup (Grind) button: Set to 198°F (92°C).
Single-cup (Coffee) button: Set to 201°F (94°C).
Double-cup (Coffee) button: Set to 205°F (96°C).
• Press the Program button again. A beep will sound, and the appliance will return to standby mode.

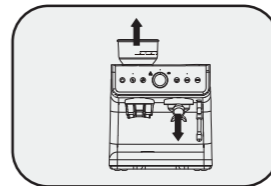


5. CLEANING

Clean the powder outlet and grinder at least once every two weeks.
**Before cleaning, ensure there are no beans in the bean hopper.*

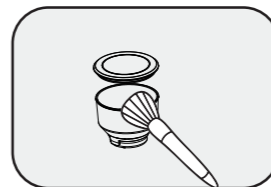
Remove the Bean Hopper

• Rotate the bean hopper counterclockwise to take it out.



Remove the Grinding Wheel

• Turn the internal grinding wheel counterclockwise and remove it. Use the included cleaning brush to remove powder and residue. **Do not rinse the grinding wheel with water.**

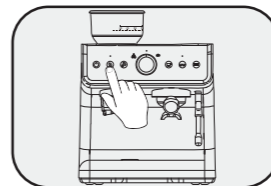


Clean the Chamber and Channel

• Use the brush to clean the grinding chamber and powder outlet channel thoroughly.

Run the Grinder Empty

• Do not reinstall the grinding wheel yet. Reinstall the empty bean hopper, press either the Single-cup (Grind) or Double-cup (Grind) button, and let the grinder run briefly to remove any remaining powder residue. Repeat steps 3 and 4 if necessary.



Reassemble the Grinder

• Remove the bean hopper again, reinstall the grinding wheel securely, and reattach the bean hopper. Cleaning is now complete.





• (For deep cleaning methods, please refer to the user manual.)

QUICK GUIDE

for CM002-15 Espresso Machine

CM002-15ASI-USZX

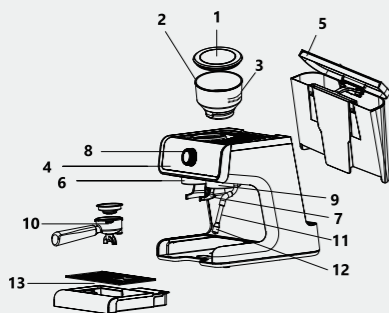
IMPORTANT SAFETY INSTRUCTIONS

-  Keep the appliance and cord out of the reach of children. Close supervision is necessary when using near children.
-  Install on a stable surface according to the instructions.
-  **DO NOT** store items on top during use.
-  **DO NOT** use outdoors or expose to sunlight.

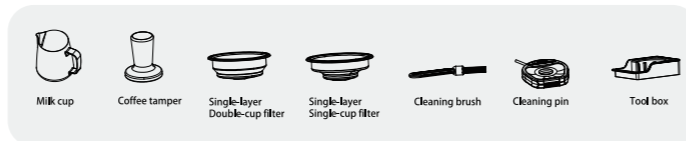
1. WHAT'S IN THE BOX

Unpack

Remove packaging and check accessories.



- | | |
|---|---|
| ① Hopper Lid | ⑦ Grind Cradle |
| ② Bean Hopper | ⑧ Steam/Hot Water Knob |
| ③ Grind Size Dial | ⑨ 58 mm Group Head |
| Customize the grind from fine to coarse | ⑩ 58mm Portafilter |
| ④ Control Panel | ⑪ Steam/Hot Water Wand |
| ⑤ Water Reservoir (removable) | ⑫ Frothing Nozzle |
| ⑥ Powder Outlet | (removable for thorough cleaning) |
| | ⑬ Drip Tray with Drip Plate (removable) |



Note:

Single-cup filter and double-cup filter can be stored in the toolbox as well. The toolbox is placed at the left lower part of the appliance, where you can pull it out when you remove the drip tray from the machine.

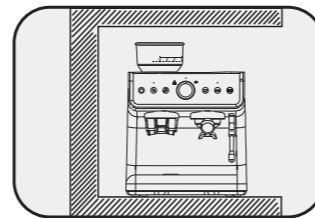
2. Set UP

Unpack and Check Accessories

- Remove all packaging. Ensure all parts are included: instruction manual, single-layer double-cup filter, single-layer single-cup filter, milk cup, tool box, cleaning brush, cleaning pin, etc.

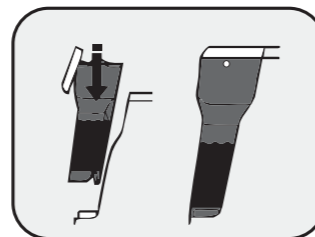
Place the Base

- Place the appliance on a flat, dry, and stable surface. Keep away from heat sources, water, and direct sunlight. Ensure sufficient ventilation space around the unit



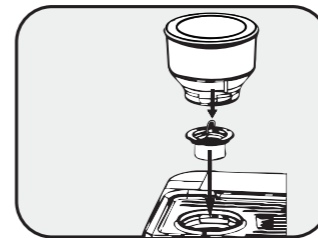
Assemble the Components

- Insert the water reservoir into place



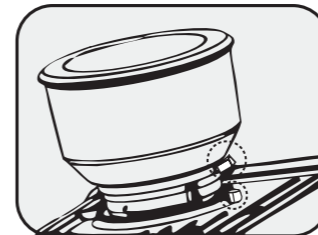
Install the bean hopper using the following steps:

- Install the cutter head (#2 in Fig. 1 below) and tighten it clockwise, then install the bean hopper and screw it as shown in Fig. 1.

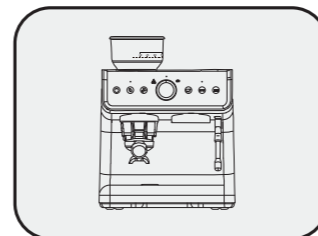


- Align the positions in circles in the figure and press it down, rotate it clockwise, and install it into the machine

Note: Do not turn on the switch until the appliance is fully assembled and ready to use.

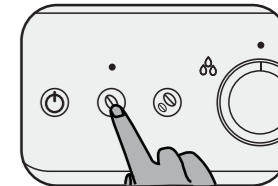


3. USING THE ESPRESSO MACHINE

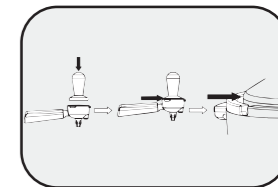


- Place the portafilter into the powder dispenser cradle, and add the coffee beans into the bean hopper, and adjust the coffee coarseness.
- Press the button to turn unit on.

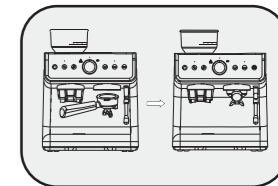
- Press the button to turn unit on.
- Select a preset to start. If desired, you can press the button again during operation to stop grinding manually.





- Use the coffee tamper to firmly compact the coffee powder with a force of approximately 12.5 kg, following the steps below.



- Align the portafilter to the group head, turn the portafilter counterclockwise to lock it.
- Put a coffee cup on the drip plate.



- Press “” or “” button to start to brew the coffee. When the set coffee dose is reached, the machine will stop working automatically.

