

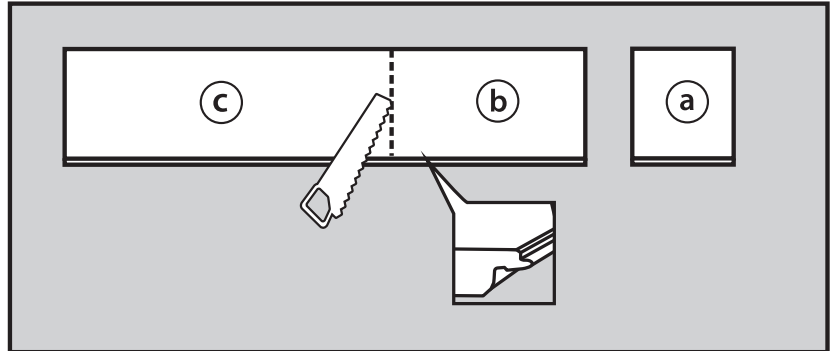
STAINMASTER® WATERPROOF FLOORING: TIPS FOR A SUCCESSFUL INSTALLATION

STAINMASTER® waterproof flooring is a high-performance floor that features Taploc technology for a quick and simple installation. The joints and locking system are constructed with proprietary technology that is designed to protect your floor and subfloor from water damage when installed properly. Please follow these easy tips for a successful installation.

ALWAYS USE AN EXTRA PLANK TO SERVE AS A TOOL TO GUIDE YOUR INSTALLATION

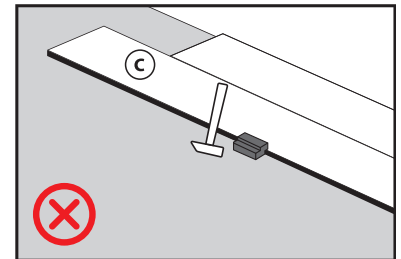
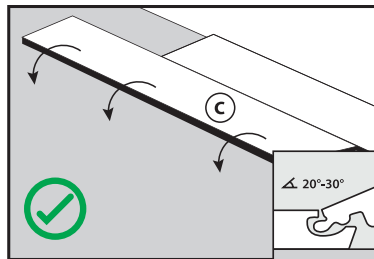
Cut a plank into three sections as follows:

- **Section A:** to be used to tap against
- **Section B:** to be used as a “bridge plank”
- **Section C:** used as the first plank of the first row



DO NOT TAP THE LONG END

Connecting planks at the long end is easy. Simply insert the long edge tongue into the long edge groove at an angle of between 20°-30°, then slowly lower it to engage the locking system.



ALWAYS USE A SCRAP PIECE WHEN TAPPING ON THE SHORT END

Never tap directly onto installed planks as this will result in damage

- Instead, tap against an 8" scrap piece of laminate as shown here
- Follow the same tip above if/when using a tapping block

