

EUC60F UNDERCOUNTER

FREEZER



Shelves

Wire shelves to maximize storage needs.

Temperature

0 ~ -8°F with digital controller. Auto-defrost prevents ice build-up.

Casters

For easy moving around. Front locking to stay put.

TECHNICAL SPECIFICATIONS

Voltage/Frequency

110V/60Hz

Compressor Power (HP)

1/4

Interior Material

Stainless Steel

Exterior Material

Stainless Steel

Temperature Range °F

0 ~ -8°F

Refrigerant

R290

NEMA Config.

NEMAS-15P



Back mount compressor for easy servicing and cleaning.



R290 Propane Refrigerant recommended for restaurants and businesses by the EPA.



Self-closing doors with click-to-stay open.



* Limited 1-year parts and labor warranty for commercial use only. Warranty null and void if used and installed in residential homes or garages.

CONTACT US

310-400-6395

INFO@ELITEKITCHEN.US
WWW.ELITEKITCHEN.US

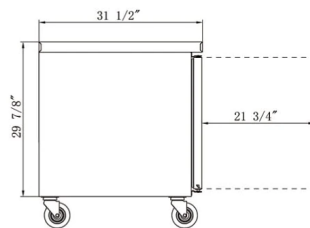
MODEL EUC60F

DETAILS & SPECIFICATIONS

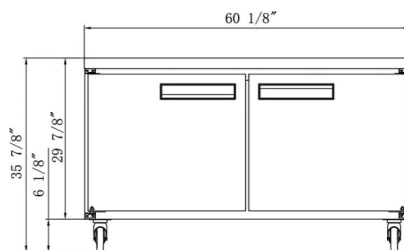


Rated Voltage	110V
Rated Frequency	60Hz
Total Input Power	950W
Total Current	8.0A
Total Capacity	15.53 cu ft
Climatic Category	4-5
Protection Type	I
Design Pressure High Side	300 PSIG
Design Pressure Low Side	150 PSIG
Insulation Blowing Gas	C-Pentane
Refrigerant	R290/4.76 oz

Side



Front



EUC60F

External Dimension
60 x 31 1/2 x 36

Packaging Dimension
61 5/8 x 33 1/8 x 39 3/8

Product Weight
292 lbs

of Shelves
2

40HQ Container Cert.
28

* Measurements presented in pounds and inches



NOTICE

For business and commercial use only. Not for use in residential homes, basements, or garages.



310-400-6395
INFO@ELITEKITCHEN.US
WWW.ELITEKITCHEN.US