



LIMITED LIFETIME WARRANTY

Compass Manufacturing International warrants to the original consumer purchaser that the faucet be free from defects in material and workmanship for as long as the original consumer purchaser owns the home in which the faucet was first installed.

In the event that Freendo faucets are used in a Commercial Application, this warranty is limited for a period of 5 years, unless otherwise specifically stated in the catalog and/or price book.

Compass Manufacturing International will replace, free of charge, during the applicable warranty period, any part or finish that proves defective in material and/or workmanship under normal installation, use and service. This warranty shall not apply to goods which have been subject to accidents, negligence or improper installation. Compass Manufacturing International will not be liable for other damages or losses, including, but not limited to: labor charges and/or damages incurred in installation, repair or replacement as well as any other kind of loss or damage. Proof of purchase from the original consumer purchaser must be made available for all warranty claims.

Compass Manufacturing International recommends using a professional plumber for all installation and repair. Compass Manufacturing International will, at its discretion, provide replacement parts for installation by consumer for any parts that prove defective under normal usage and service with new or equivalent parts. Replacement parts may be obtained by emailing the address below, calling the number below or by writing to:

Compass Manufacturing International

Freendo Product Service

6702 Enterprise Drive

Louisville, KY 40214

800.626.3525

warranty@cmiproduct.com

Revised 4/28/16

warranty@cmiproduct.com

© Compass Manufacturing International

800.626.3525



Model No. : 201-7713 Polished Chrome
201-7714 Brushed Nickel *Spotless PVD*
201-7715 Oil-Rubbed Bronze



Wide Spread Lavatory Faucet With Pop-up
3 Hole Installation, 6" -10" Center-Set

Helpful Information

Helpful Tools

Tools:

Gather the necessary tools as shown below to complete the installation of this faucet. Some may not be needed depending on the model of faucet you are installing. Check with your local hardware store on the requirements of your installation situation.



Plumber's Putty



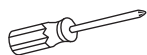
Flashlight



Basin Wrench



Safety Glasses



Screwdriver



Pliers

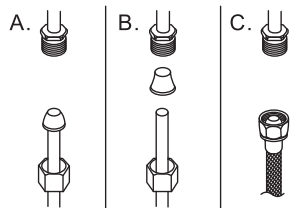


Channel Locks



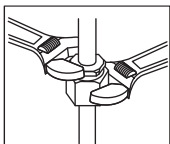
Adjustable Wrench

Connect to water supply lines with either:



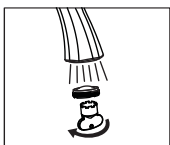
- (A) 3/8" O.D. Copper tubing (ball nose risers with the coupling nuts or;
(B) 3/8" Copper tubing (no ball) with supplied tube head interior connector or;
(C) IPS faucet connectors (1/2")

! Warning: The supply valves and supply lines are not included.



Important:

Tighten connection with two wrench to prevent damage to tube body. Be careful not to bend the stem as this will void the product warranty.



Remove the aerator and let both hot and cold water run for one minute. To clear any line trash. This will help clean any debris that might clog the system. Re-assemble aerator.

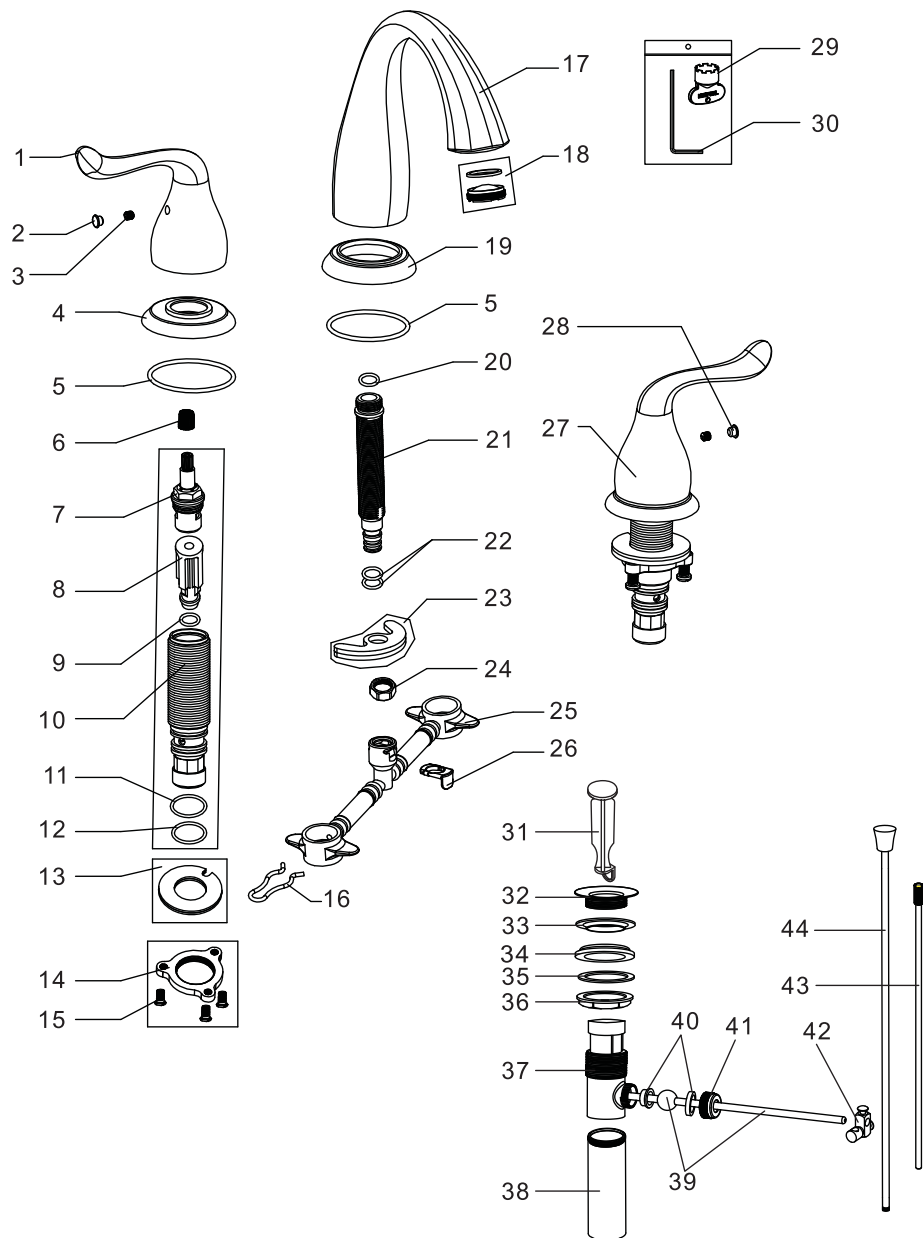
Test system for leaks .

Parts List

22	O-ring	44	Lift Rod
21	Inlet	43	Extend Rod
20	O-ring	42	Fittings
19	Spout Flange	41	Rod Guide Nut
18	Aerator	40	Rod Ball Plastic Gasket
17	Spout	39	Horizontal Rod
16	Clip	38	Tailpiece
15	Screw	37	Drain Body
14	Locknut	36	Locknut
13	Clamp	35	Washer
12	O-ring	34	Bottom Rubber Washer
11	O-ring	33	Top Rubber Washer
10	Brass Valve Body	32	Flange
9	O-ring	31	Drain Stopper
8	Cartridge seat	30	Allen Key
7	Cartridge(Hot Water)	29	Aerator Wrench
6	Handle Adapter	28	Index(Cold)
5	O-ring	27	Cartridge(Cold Water)
4	Handle Flange	26	Plastic Lock Ring
3	Set Screw	25	Quick Connect Hose
2	Index(Hot)	24	Locknut
1	Handle	23	Clamp
No.	Part Name	No.	Part Name

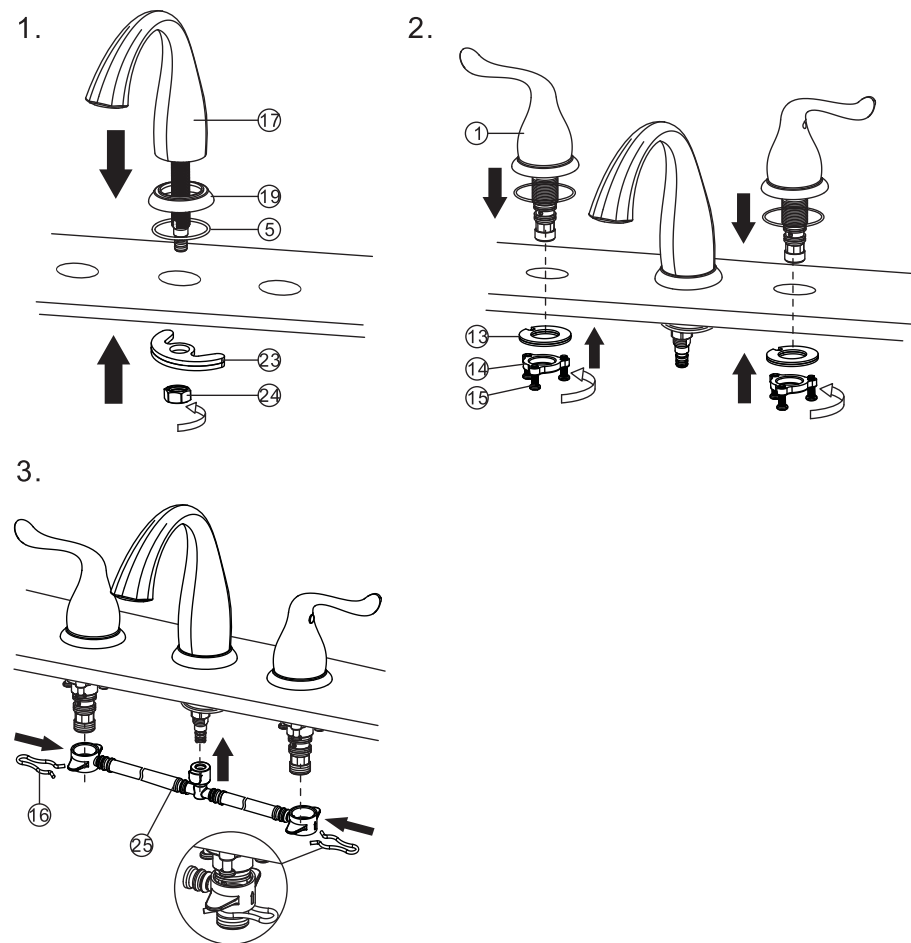
4

Parts Diagram



1

Faucet Installation

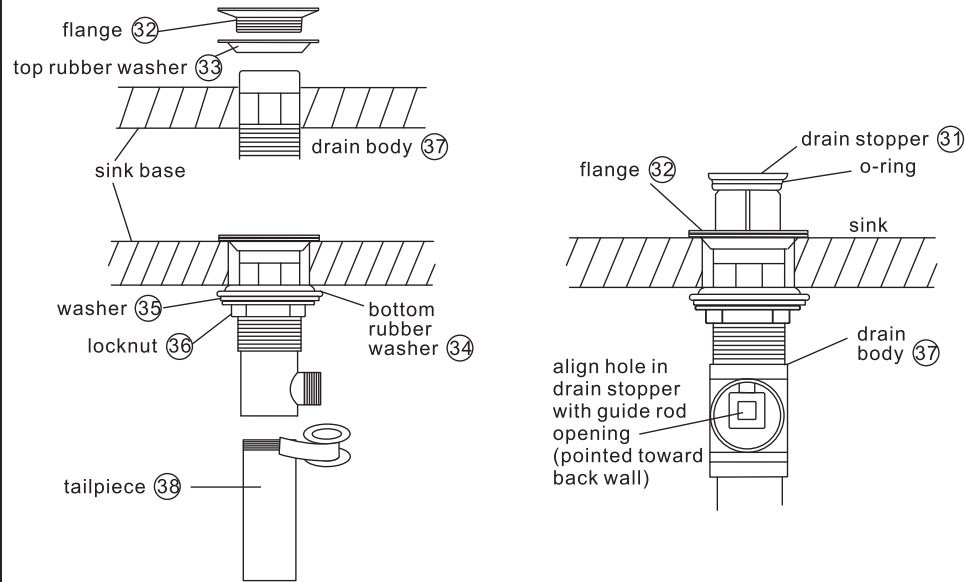


1. Position spout ①⑦, spout flange ①⑨ and O-ring ⑤ on countertop, from underneath of the countertop, assemble clamp ②③ and locknut ②④, tighten the locknut with basin wrench.
2. Position the handle ① as shown, and assemble the clamp ①③, locknut ①④ and screw ①⑤. Tighten the locknut ①④ by hand and secure the screws ①⑤ by screwdriver.
3. Position the quick connect hose ②⑤ as shown and fix it to faucet by using the clip ①⑥.

2

Pop-up Installation

Instruction for product with drain option only

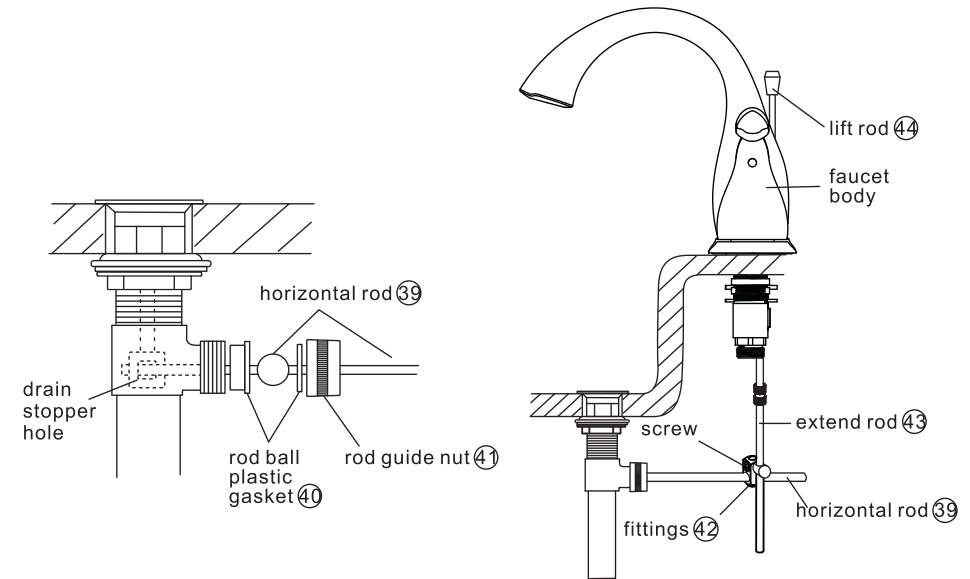


- Remove pop-up drain stopper (31) and flange (32) with top rubber washer (33) for pop-up assembly.
 - Insert drain body from underneath of sink drain hole. Replace flange (32) and top rubber washer (33) back to drain body (37). Tighten flange as far as possible.
 - Slide bottom rubber washer (34) on drain body up against bottom of sink. Tighten washer (35) and locknut (36) firmly against base for tight seal.
 - Remove tailpiece (38) from drain body (37), add Teflon tape, replace tailpiece (38).
- Replace pop-up drain stopper (31) to drain body (37) with o-ring in place, and align stopper hole with guide rod opening.

3

Pop-up Installation

Instruction for product with drain option only



- Remove rod guide nut (41) and rod ball plastic gasket (40).
 - Insert horizontal rod (39) into drain body (37) and through hole in drain stopper (31).
 - Replace rod guide nut (41) with rod ball plastic gasket (40) and tighten it.
- Insert lift rod (44) through hole on faucet body.
 - Connect extend rod (43) to lift rod (44). Attach horizontal rod (39) to extend rod (43) using fittings (42), tighten screw.