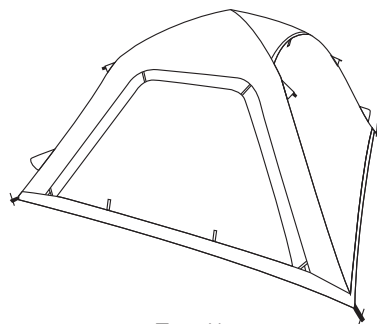
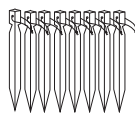


Hydsto Product introduction

Included accessories list



Tent X 1



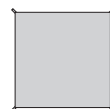
Ground Nail X 8



Plastic Hammer X 1



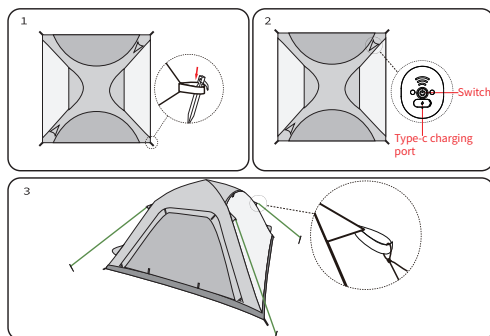
Wind Rope X 4



Floor Mat X 1

How to Install tent

1. Take the tent out of the storage bag, lay the bottom flat on the ground, and fix it with ground nails at the four corners.
 2. Automatic inflation mode: Double-click the inflation button on the operator panel, the tent will automatically inflate. When the air pressure reaches the set value (35 Kpa), it will automatically stop and complete the inflation.
 3. Forced pressurized mode: Press and hold the inflation button for 3 seconds to enter the forced pressurized mode. In this mode, the inflation pressure will exceed the set value (35Kpa). It is necessary to manually judge the air pressure of the tent and manually click the button to turn off in time.
 4. After the tent is fully inflated, tie the wind rope and insert the ground nails to complete the installation.
- ▲ After the tent is fully inflated, tie the wind rope and insert the ground nails to complete the installation.



How to use ground nails

The ground nails are driven into the ground at an inclination angle of 45°~60°, which can be more firm.

How to use wind rope

Pull out one end of the wind rope buckle and fix it with ground nails, tighten the wind rope buckle, and adjust the length of the rope until the tent is completely taut.

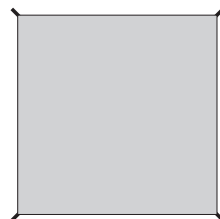
How to use mat

Comes with an independent square floor mat, which can be placed at the bottom of the tent to protect the tent, and can also be used as a picnic mat, camping mat, etc.

Using the wind rope and ground nail as shown in the figure:



Spreading out the mat as shown in the figure:



How to pack up tent

1. Untie the wind rope and pull out the ground nail.
2. Unscrew the air outlet of the tent to deflate.
3. After deflation, start to fold the tent from the end farthest from the air outlet, and press gently so that the tent can fully deflate.
4. After folding, put it into the storage bag together with the accessories.

LED display

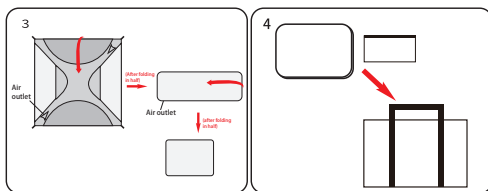
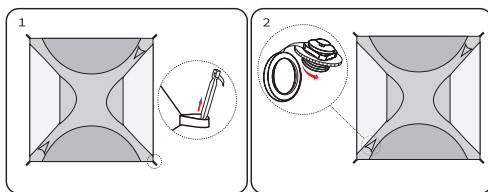
Charging: The red light flashes.

Fully charged: The blue light is always on.

Inflating: When the power is more than 30 %, the blue light is always on. When the power is less than 30 %, the red light is always on.

Low battery when inflating: The motor is turned off, and the red light flashes and then stops.

Low battery in standby: Press the button, the red light flashes and then stops, the motor not rotate.



Tips for Tent Maintenance

About use

- Before setting up, you should clear branches, sharp stones and other debris on the ground to avoid damage to the bottom of the tent.
- Please avoid sharp objects touching the air column to avoid damage and air leakage.
- After use, clean up the inside of the tent in time, and store it after drying.

About storage

- For daily storage, choose a dry and cool environment, keep the tent clean to avoid odors.
- When storing for a long time, it is recommended to open the tent regularly, make it fully spread out and dry, and then pack it up again.

About clean

- Because the tent contains an electronic air pump, please do not put the tent as a whole into the water, so as to avoid the failure of the electronic devices. You can gently wipe and clean the tent with a sponge dipped in warm water (except the electric air pump).
- Do not use hot water, bleach, dishwashing liquid, fabric softener, pre-soak liquid, etc.

Tips

- Under normal use of the tent, your breath in the tent will cause a little condensation on the inner wall of the tent, which is a normal phenomenon and not leaking from the outside. Enhanced ventilation helps reduce condensation.
- Windproof: only suitable for wind below grade 4 (in the case of using a wind rope).
- Rainproof: only suitable for light rain.

Tent Precautions

- Please keep away from fire and heater.
- Do not use fuel-burning devices in the tent.
- There should be adequate ventilation in the tent.
- If you use a hand air pump, please pay attention to use a reasonable air pressure value. It is recommended not to exceed 35Kpa, so as not to damage the air column.

