



INSTALLATION MANUAL

MODEL #201331
30 AMP THRU-WALL GENERATOR
OUTLET KIT



ACTIVATE YOUR WARRANTY

by registering your product:
championpowerequipment.com

SERIAL NO.



1-877-338-0999

or visit **championpowerequipment.com**

SAVE THESE INSTRUCTIONS. This manual contains important safety precautions which should be read and understood before operating the product. Failure to do so could result in serious injury. This manual should remain with the product.

Specifications, descriptions and illustrations in this manual are as accurate as known at the time of publication, but are subject to change without notice.

Covered by one or more U.S. and foreign patents pending.

TABLE OF CONTENTS

Introduction	3
Safety Definitions	3
Important Safety Instructions	4
Instructions for Champion Thru-Wall Generator Outlet Kit	4
Before Installation	4
Safety Labels	5
Safety Symbols	5
Controls and Features	6
Interior Receptable Box	6
Power Inlet Box (PIB)	6
Parts Included	7
Tools Needed	7
Generator and Accessories Needed	7
Equipment Description	8
Installation	8
Unpacking	8
Locating Outlet Kit	8
Mounting Outlet Kit	8
Power Inlet Box (PIB)	9
Installing and Wiring Power Inlet Box (PIB)	9
Operation	10
Specifications	11
Power Inlet Box	11

 **FOR PARTS BREAKDOWN**

Search by model number at
championpowerequipment.com

INTRODUCTION

Congratulations on your purchase of a Champion Power Equipment (CPE) product. CPE designs, builds, and supports all of our products to strict specifications and guidelines. With proper product knowledge, safe use, and regular maintenance, this product should bring years of satisfying service.

Every effort has been made to ensure the accuracy and completeness of the information in this manual at the time of publication, and we reserve the right to change, alter and/or improve the product and this document at any time without prior notice.

CPE highly values how our products are designed, manufactured, operated, and serviced as well as providing safety to the operator. Therefore, it is **IMPORTANT** to review this product manual and other product materials thoroughly and be fully aware and knowledgeable of the assembly, operation, dangers and maintenance of the product before use. Fully familiarize yourself, and make sure others who plan on operating the product fully familiarize themselves too, with the proper safety and operation procedures before each use. Please always exercise common sense and always err on the side of caution when operating the product to ensure no accident, property damage, or injury occurs. We want you to continue to use and be satisfied with your CPE product for years to come.

When contacting CPE about parts and/or service, you will need to supply the complete model and serial numbers of your product. Transcribe the information found on your product's nameplate label to the table below

CPE TECHNICAL SUPPORT TEAM
1-877-338-0999
MODEL NUMBER
201331
SERIAL NUMBER
DATE OF PURCHASE
PURCHASE LOCATION

SAFETY DEFINITIONS

The purpose of safety symbols is to attract your attention to possible dangers. The safety symbols, and their explanations, deserve your careful attention and understanding. The safety warnings do not by themselves eliminate any danger. The instructions or warnings they give are not substitutes for proper accident prevention measures.

DANGER

DANGER indicates a hazardous situation which, if not avoided, will result in death or serious injury.

WARNING

WARNING indicates a hazardous situation which, if not avoided, could result in death or serious injury.

CAUTION

CAUTION indicates a hazardous situation which, if not avoided, could result in minor or moderate injury.

NOTICE

NOTICE indicates information considered important, but not hazard-related (e.g., messages relating to property damage).

IMPORTANT SAFETY INSTRUCTIONS

WARNING

Cancer and Reproductive Harm - www.P65Warnings.ca.gov

Instructions for Champion Thru-Wall Generator Outlet Kit

This manual has been prepared for familiarizing dealer/installer with the design, application, and installation of the equipment.

Read the manual carefully and comply with all instructions. It is recommended that a licensed electrician or an individual with complete knowledge of electricity perform the installation of the outlet kit.

This manual or a copy of this manual should remain with the outlet kit. Every effort has been taken to make sure that the contents of this manual are accurate and current.

The manufacturer reserves the right to change, alter or otherwise improve this manual and the product at any time without prior notice and without any obligation or liability whatsoever.

The manufacturer cannot anticipate every possible circumstance that might involve a hazard.

The warnings in this manual, tags and decals affixed to the unit are, therefore, not all-inclusive. If using a procedure, work method or operating technique the manufacturer does not specifically recommend, be sure to always follow all local municipal, state and national electrical codes to ensure safety for personnel.

Many accidents are caused by failing to follow simple and fundamental rules, codes and precautions. Before installing, or operating this equipment, read the SAFETY RULES carefully.

All installations must comply with local municipal, state and national codes.

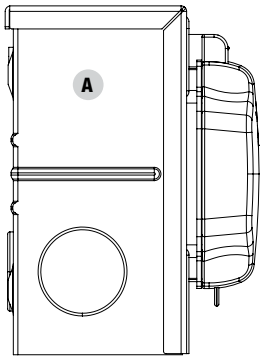
Before Installation

CAUTION

Consult with your Local municipal, State and National electrical codes for proper mandatory wiring methods.

Safety Labels

These labels warn you of potential hazards that can cause serious injury. Read them carefully.
If a label comes off or becomes hard to read, contact Technical Support Team for possible replacement.




Side

LABEL		DESCRIPTION
A	<div><div><div><div><div><div></div><div>DANGER</div></div></div><div><div></div><div>PELIGRO</div></div></div><div><div><div>ELECTRIC SHOCK HAZARD</div><div>For power inlet only. Not for use as an outlet. Connect the cord to this inlet and the generator prior to starting the generator. Terminals may be energized when the cord is connected. Shut down the generator before disconnecting the cord from this inlet and the generator.</div></div><div><div><div>RIESGO DE DESCARGA ELÉCTRICA</div><div>Solo para entrada de corriente. No debe utilizarse como enchufe. Conecte el cable a esta toma y al generador antes de arrancar el generador. Las terminales pueden estar energizadas cuando el cable está conectado. Apague el generador antes de desconectar el cable de esta entrada y del generador.</div></div><div><div><div>Conforms to / Conforme a</div><div>UL STD.498</div><div>Certified to / Conforme a</div><div>CSA STD.C22.2 #42</div></div><div><div><div><div><div><div></div><div>ETL</div></div><div><div><div><div><div></div><div>CU</div></div><div><div><div><div></div><div>AL</div></div></div></div><div><div><div><div></div><div>Intertek</div></div><div><div><div></div><div>4000058</div></div></div></div><div><div><div><div></div><div>UL</div></div><div><div><div></div><div>US</div></div></div></div></div></div></div></div></div></div></div></div></div></div></div></div></div></div>	Electric Shock Hazard

Safety Symbols

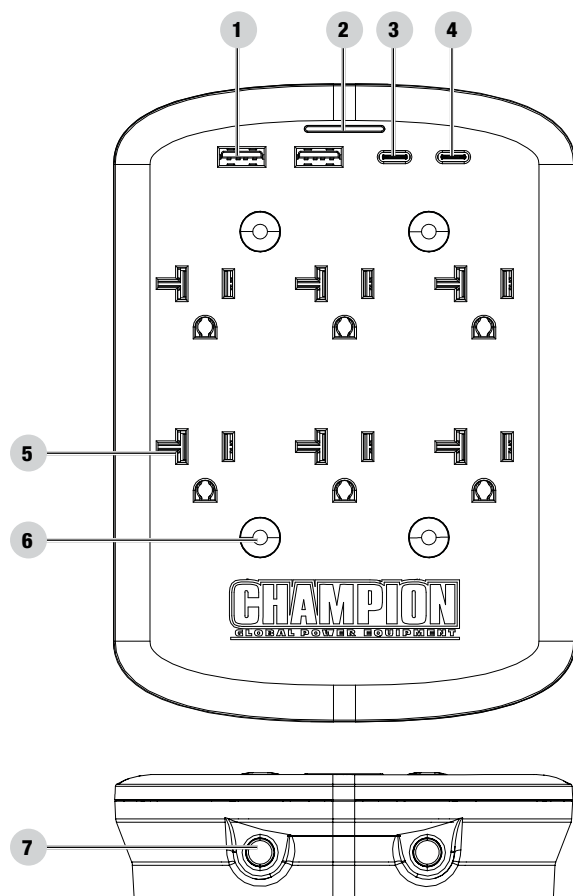
Some of the following symbols may be used on this product. Please study them and learn their meaning. Proper interpretation of these symbols will allow you to more safely operate the product.

SYMBOL	MEANING
	Ground. Consult with local electrician to determine grounding requirements before operation.

CONTROLS AND FEATURES

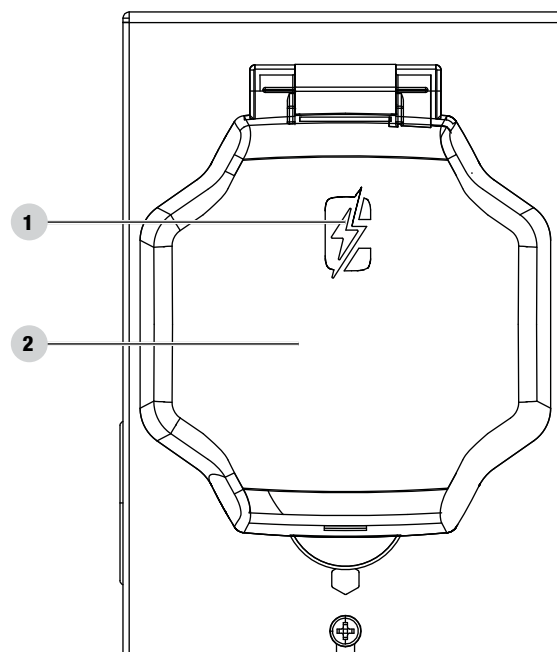
Read this operator's manual before operating your outlet. Familiarize yourself with the location and function of the controls and features. Save this manual for future reference.

Interior Receptable Box



1. USB-A (2)
2. Power LED
3. USB-C
4. USB-C PD
5. 15A Receptacles (6)
6. Mounting screw holes
7. 20 AMP Breaker

Power Inlet Box (PIB)



1. Power LED
2. Outlet Cover

Parts Included

Interior receptacle box	1
Power inlet box	1

Installation Kit

1. 1/2 in. Conduit fitting	1
2. Sealing ring	1
3. 1/2 in. Conduit locknut	1
4. Conduit grommet	1
5. Foam weather sealing donut	1
6. 1/2 in. x 12 in. PVC conduit	1
7. #8 x 3 in. Wall anchor screw	4
8. #8 Wall anchor	4
9. #8 x 1-1/2 in. Stainless steel screw	3
10. Mounting screw caps	4
11. Knockout cover	1

Tools Needed

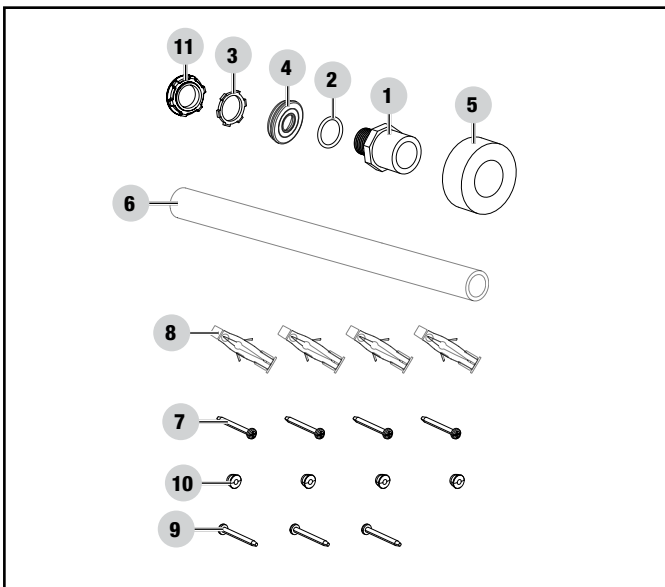
- Power drill
- #2 Philips screwdriver
- 1/4 in. drill bit
- Hammer
- Level
- 1-1/4 in. drill bit
- Pencil
- PVC cutter or Hacksaw

Generator and Accessories Needed

- Champion 25 ft. Power Cord [#100395] or equivalent 30A 125/250V generator power cord with L14-30 connectors
- 120/240V Generator with L14-30R Outlet

NOTICE

If you have a 120V generator with a three prong L5-15R, L5-20R, L5-30R or TT30R outlet, you will need to use the appropriate adapter to match your generator's outlet. The total power output of the interior receptacle box will be limited to MAX 30A or your generator's MAX output if lower than 30A.



EQUIPMENT DESCRIPTION

The easy to install Thru-Wall Generator Outlet Kit allows convenient power in your house during a power outage with your generator located safely outside - ONLY use generators OUTSIDE and far away from doors, windows and vents. With this Outlet Kit, there is no longer a need to run extension cords from the generator through doors and windows to power your appliances during utility power outages. You will now have easily accessible power at the provided interior receptacle box, same as a utility powered outlet.

INSTALLATION

Unpacking

1. Use care when unpacking to avoid damaging components.
2. Layout all parts and compare to *Parts Included* section.

Locating Outlet Kit

NOTICE

Installation must comply with local municipal, state and national codes.

1. Survey both interior and exterior locations that provide convenient and clear access to the Outlet Kit. The interior location is to be between wall studs in a clear wall cavity, without existing electrical outlet, water pipe, waste pipe, gas pipe, vent, etc. The exterior location (directly opposite of the interior location) is to be clear of plants, utility box, cable box, vents, etc. Allow enough room around the exterior location to be able to plug a generator power cord into the Power Inlet Box.
Some installations may need to use specific hardware, such as mounting blocks, sealant, concrete screws, etc. not included in the following instructions or kit.
2. Once the survey is complete and a location chosen, measure up 19 inches from the floor and mark location with a pencil. Placing the Outlet Kit slightly lower or higher than existing electrical outlets may help to avoid existing electrical cables while drilling.

NOTICE

Check to see if local codes apply for specific height.

Mounting Outlet Kit

Drilling the Center Hole

1. Place tip of a 1-1/4 in. drill bit on the location mark and drill from the inside wall. Once the drill bit has passed through the first wall material, probe through the cavity to ensure there are no electrical cables, water or gas pipes, vents, etc. If obstructions located, find a new height/location to drill through.
2. Drill at a very slight downward angle to prevent water from getting into interior receptacle box. Drill slowly, to avoid getting the drill bit caught on insulation until you reach the outside wall. Ensure you are using the correct drill bit for your interior and exterior wall material.
3. Have a second person watch for the drill bit tip to exit through the outside wall.
4. If necessary, move to the outside and finish drilling through the outside wall slowly, to create a clean hole.

Sizing the PVC Conduit

1. Loosen screw at the bottom front of the box and lift off the cover. Remove the ground wire from the rear portion of the power inlet box for easier handling.
2. Remove the plug from the desired conduit knockout hole on the power inlet box. The following steps will cover rear hole installation, for side and underside holes, it is recommended to consult an electrician for proper installation method.
3. Install rubber grommet into hole.
4. Remove locknut from 1/2 in. conduit fitting. Push the threaded end of the fitting through the grommet until flush. Replace locknut and tighten. Use a hammer and screw driver to fully tighten the locknut. Optional: Apply silicone sealant between the fitting and grommet for extra water resistance.
5. Install the foam weather sealing donut around the conduit fitting as close to the box as possible.
6. Push the 1/2 in. PVC conduit into the conduit fitting.
7. Slide the conduit through the hole until power inlet box sits tight against the wall.
8. Move to the inside. Lightly pull the conduit to ensure it is still against exterior wall and make a mark on conduit 1/8 in. below the surface of the interior wall.
9. Remove the conduit from the power inlet box and, using a hacksaw or PVC cutter, cut the conduit at the mark.

Installing the Interior Receptacle Box

1. Press the interior receptacle box firmly against the wall and loosely insert the (4) #8 x 3 in. mounting screws.
2. Place a level on the side of the box and ensure the box is level. Turn the 4 screws just enough to make a mark in the wall.

3. Remove the box from the wall, fish the wire through the conduit and push the conduit tightly into the interior receptacle box collar.
4. Using a 1/4 in. drill bit, drill 4 holes through the wall at your screw marks.
5. Push the anchors firmly into the wall and use a hammer to secure them flush with the wall.
6. Slide the conduit through hole.
7. Press the interior receptacle box against the wall and secure with (4) #8 x 3 in. mounting screws into your anchors. Tighten securely until the anchors have collapsed inside the wall and are holding the interior receptacle box tight to the wall.

Power Inlet Box (PIB)

NOTICE

Since a portable generator is always operated outdoors, far away from occupied buildings, the included NEMA 3R outdoor rated Power Inlet Box (PIB) will be used to connect the generator to the interior receptacle box.

When the generator is providing power to the PIB with the Power Cord, the green LED indicator will be lit showing power to the PIB receptacle.

Installing and Wiring Power Inlet Box (PIB)

NOTICE

Locate the PIB on an exterior wall that will ensure the generator will be far away from windows, doors, and vents.

Installation may vary depending on your homes wall material and construction.

During PIB installation, extra measures may be needed to ensure proper weatherproofing at the PIB hole cavity.

Consult a professional if you are unsure of proper method for your home.

CAUTION

Consult with your Local municipal, State and National electrical codes for proper mandatory wiring methods.

1. Run the wires through the conduit fitting and into the power inlet box.

CAUTION

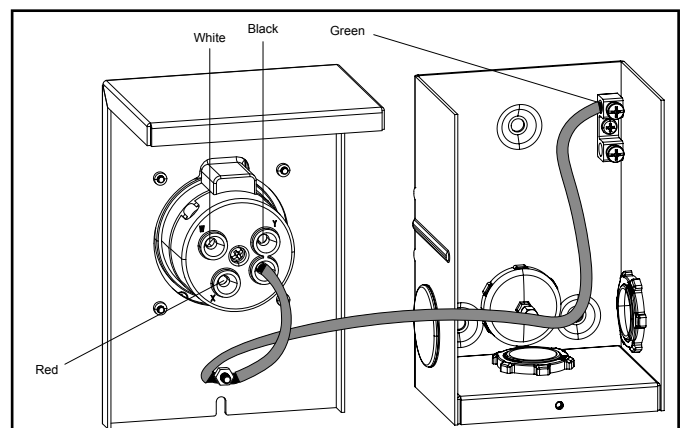
PVC cement can eat through wire insulation. Apply in thin layer, ensuring no PVC cement drips down into the conduit or contacts the wire insulation.

2. Apply a small, thin layer of PVC cement to the conduit, position the conduit fitting over the conduit and press together firmly.
3. Place a level on the side of the power inlet box and ensure the box is level. Using the 3 holes provided on the back of the box, mount PIB on exterior wall using supplied (3) #8 1-1/2 in. screws so the foam weather sealing donut compresses to form a weatherproof seal.

NOTICE

Determine appropriate hardware, based off your homes wall material and construction such as mounting blocks, sealant, concrete screws, etc.

4. Reconnect the grounding wire, removed in previous step, to the lug on the rear portion of the PIB.
5. Loosen screw on the grounding terminal inside the box. Cut green grounding wire of cable from interior receptacle box to final length and strip wire insulation. Making sure both green grounding wires from the PIB receptacle and interior receptacle box are inserted in-between plates on the grounding terminal of PIB.
6. Cut red, black, and white wires of cable to final length and strip wire insulation.
7. On the back of the outlet, insert white wire into hole marked in.Win., tighten corresponding screw. Insert red wire into hole marked in.Xin., tighten corresponding screw. Insert black wire into hole marked in.Yin., tighten corresponding screw.



NOTICE

Tighten all screws to 35 inch-pounds torque.

8. Carefully fold wires into box, replace cover, and tighten bottom screw.

OPERATION

DANGER

Generator exhaust contains carbon monoxide, a colorless, odorless, poisonous gas. Breathing carbon monoxide will cause nausea, dizziness, fainting or death. If you start to feel dizzy or weak, get to fresh air immediately.

1. Set up generator outdoors, far away from building, windows, doors, vents or other openings.
2. Ground generator per instructions in the generator's operators manual.
3. Start generator.
4. Connect generator to PIB using Champion 25 ft. Power Cord [#100395] or equivalent 30A 125/250V generator power cord with L14-30 connectors. The light on the PIB outlet cover should be illuminated.
5. At the Interior Receptacle Box, the light should be illuminated meaning there is generator power to the outlets and USB ports.
6. Balance heavy loads like refrigerators, air conditioners, sump pumps and light loads like lamps and TVs between the top and bottom rows. For example, do not plug in 2 heavy loads into top row and only light loads into bottom row. Plug 1 heavy load into each row.

CAUTION

Only plug in one appliance per receptacle. Do not use multi-outlet extension cords or surge protectors to plug in additional items. Make sure that extension cords are rated for the total amps used by the item connected to them.

NOTICE

When applicable, make sure your generator's voltage selector switch is set to 240V.

SPECIFICATIONS

Model	201331
AC Input	125/250V 30A 60Hz 3750/7500W
AC Output	125V 20A 60Hz 2500W (x2)
USB C1 Output	5VDC 3A, 9VDC 3A, 12VDC 2.92A, 20VDC 1.75A, MAX 35W
USB C2 Output	5VDC 2.4A, MAX 12W
USB A1 Output	5VDC 2.4A, MAX 12W
USB A2 Output	5VDC 2.4A, MAX 12W
Interior Circuit Breakers	(2) 20A
Wire Gauge	10ga

Power Inlet Box

Outlet	L14-30P
Enclosure Rating	NEMA 3R
Conduit Knockout Size	3/4 inch nominal
Listings	UL 498, CSA C22.2 NO. 42

WARRANTY*

CHAMPION POWER EQUIPMENT
1 YEAR LIMITED WARRANTY

Warranty Qualifications

To register your product for warranty and FREE lifetime call center technical support please visit:

<https://www.championpowerequipment.com/register>

To complete registration you will need to include a copy of the purchase receipt as proof of original purchase. Proof of purchase is required for warranty service. Please register within ten (10) days from date of purchase.

Repair/Replacement Warranty

CPE warrants to the original purchaser that the mechanical and electrical components will be free of defects in material and workmanship for a period of one year (parts and labor) from the original date of purchase and 90 days (parts and labor) for commercial and industrial use. Transportation charges on product submitted for repair or replacement under this warranty are the sole responsibility of the purchaser. This warranty only applies to the original purchaser and is not transferable.

Do Not Return The Unit To The Place Of Purchase

Contact CPE's Technical Service and CPE will troubleshoot any issue via phone or e-mail. If the problem is not corrected by this method, CPE will, at its option, authorize evaluation, repair or replacement of the defective part or component at a CPE Service Center. CPE will provide you with a case number for warranty service. Please keep it for future reference. Repairs or replacements without prior authorization, or at an unauthorized repair facility, will not be covered by this warranty.

Warranty Exclusions

This warranty does not cover the following repairs and equipment:

Normal Wear

Products with mechanical and electrical components need periodic parts and service to perform well. This warranty does not cover repair when normal use has exhausted the life of a part or the equipment as a whole.

Installation, Use and Maintenance

This warranty will not apply to parts and/or labor if the product is deemed to have been misused, neglected, involved in an accident, abused, loaded beyond the product's limits, modified, installed improperly or connected incorrectly to any electrical component. Normal maintenance is not covered by this warranty and is not required to be performed at a facility or by a person authorized by CPE.

Other Exclusions

This warranty excludes:

- Cosmetic defects such as paint, decals, etc.
- Wear items such as filter elements, o-rings, etc.
- Accessory parts such as starting batteries, and storage covers.
- Failures due to acts of God and other force majeure events beyond the manufacturer's control.
- Problems caused by parts that are not original Champion Power Equipment parts.

Limits of Implied Warranty and Consequential Damage

Champion Power Equipment disclaims any obligation to cover any loss of time, use of this product, freight, or any incidental or consequential claim by anyone from using this product. THIS WARRANTY IS IN LIEU OF ALL OTHER WARRANTIES, EXPRESS OR IMPLIED, INCLUDING WARRANTIES OF MERCHANTABILITY OR FITNESS FOR A PARTICULAR PURPOSE.

A unit provided as an exchange will be subject to the warranty of the original unit. The length of the warranty governing the exchanged unit will remain calculated by reference to the purchase date of the original unit.

This warranty gives you certain legal rights which may change from state to state or province to province. Your state or province may also have other rights you may be entitled to that are not listed within this warranty.

Contact Information

Address

Champion Power Equipment, Inc.
6370 S Pioneer Way, Unit 101
Las Vegas, NV 89113 USA
www.championpowerequipment.com

Customer Service

Toll Free: 1-877-338-0999
info@championpowerequipment.com
Fax no.: 1-562-236-9429

Technical Service

Toll Free: 1-877-338-0999
tech@championpowerequipment.com
24/7 Tech Support: 1-562-204-1188