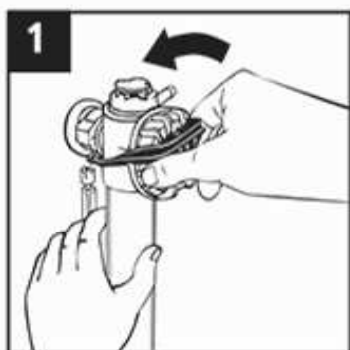
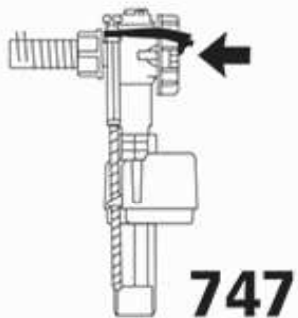
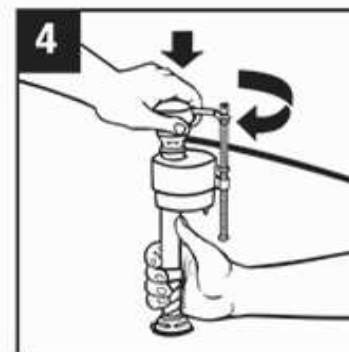
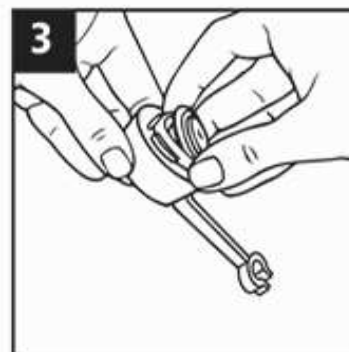
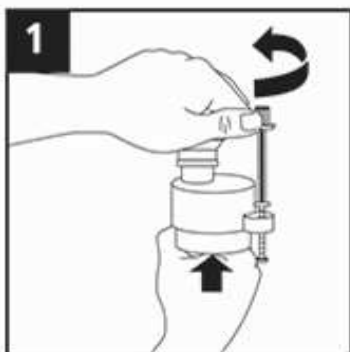
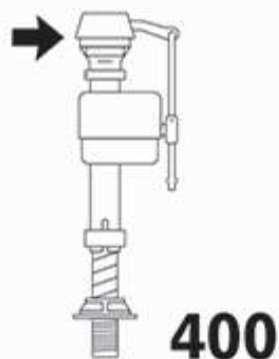


INSTALL WITH CONFIDENCE • INSTÁLE CON CONFIANZA



1. Turn off water supply. Flush toilet. Twist to remove cap.

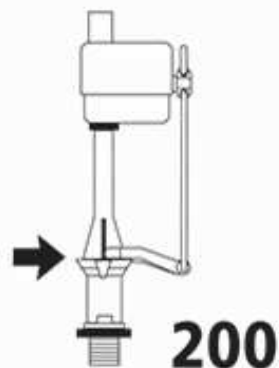
2. Hold cup over opening, slowly turn on water to clear debris. Turn off water.

3. Remove old seal and replace seal, flat side up. DO NOT BEND stem.

4. Twist cap back into place. Turn on water.

NOTE: Replace fill valve if a) older than 5 years, b) do not know age, c) if in-tank bowl cleaners have been used. Use of such cleaners will: 1) RESULT IN DAMAGE to tank parts, 2) MAY CAUSE FLOODING and PROPERTY DAMAGE, 3) VOID FLUIDMASTER WARRANTY. Use only

genuine Fluidmaster replacement parts. Use of non-Fluidmaster parts will void the warranty on the Fluidmaster Valve.



1. Corte el suministro de agua. Descargue el inodoro. Gire para quitar la tapa.
2. Sostenga la taza sobre la abertura, abra lentamente el suministro de agua para limpiar los residuos. Corte el suministro de agua.
3. Retire el sello antiguo y coloque el nuevo con la parte plana hacia arriba. NO DOBLE el vástago.
4. Gire para colocar la tapa en su lugar nuevamente. Abra el suministro de agua.