

Grand - Wide Spread Roman Tub Faucet



- * 5-5/16" High and 7-1/8" Long One Piece Solid Cast Brass Spout, Zinc Handle
- * Solid Brass Waterway Construction with 1/2" -14 NPSM Connection
- * 1/4 Turn Premium Grade High Flow Rate Ceramic Cartridges (Type K)
- * Brass Tube Spout, Zinc Handle
- * Flow Rate: 18.0GPM @ 80PSI
- * 100% Pressure System Tested
- * Lifetime Limited Warranty; 5 year warranty from date of purchase for Commercial users.

Project / Job Name	
Architect / Engineer	
Contractor	
Model	
Quantity	

Model No. :



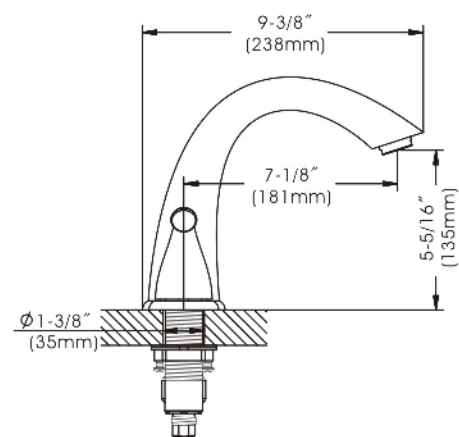
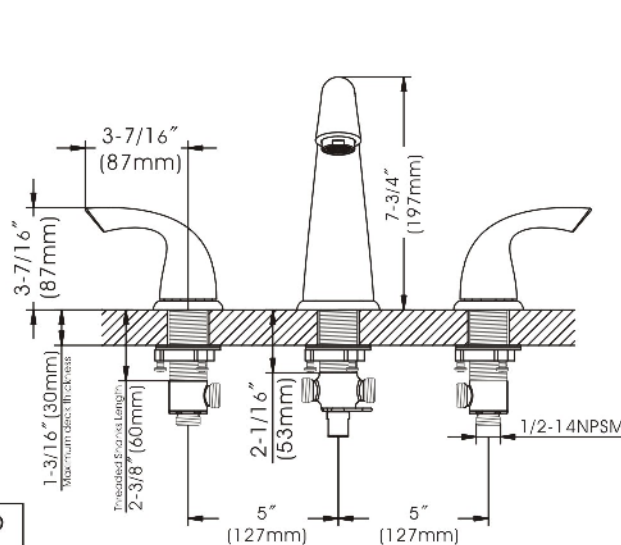
211-6602 (CH)
(Shown Model)



211-6603 (BN *Spotless PVD*)



211-6604 (ORB)



Cartridge (Type K)



Product Compliance:

- ASME A112.18.1 / CSA B125.1
- ANSI A117.1 (ADA)

Grand - Wide Spread Roman Tub Faucet



- * 5-5/16" High and 7-1/8" Long One Piece Solid Cast Brass Spout, Zinc Handle
- * Solid Brass Waterway Construction with 1/2" -14 NPSM Connection
- * 1/4 Turn Premium Grade High Flow Rate Ceramic Cartridges (Type K)
- * Brass Tube Spout, Zinc Handle
- * Flow Rate: 18.0GPM @ 80PSI
- * 100% Pressure System Tested
- * Lifetime Limited Warranty; 5 year warranty from date of purchase for Commercial users.

Project / Job Name	
Architect / Engineer	
Contractor	
Model	
Quantity	

Model No. :



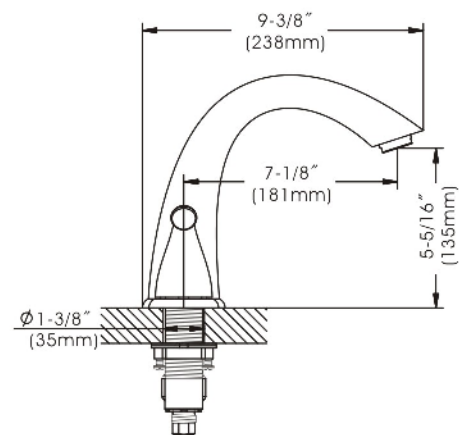
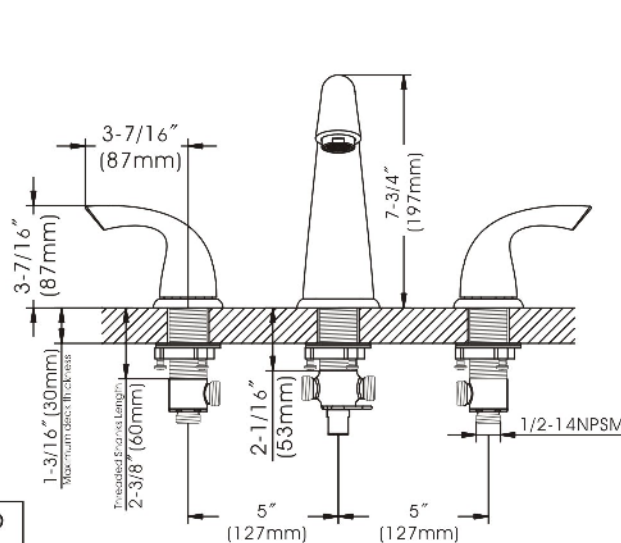
211-6602 (CH)



211-6603 (BN **Spotless PVD**)
(Shown Model)



211-6604 (ORB)



Cartridge (Type K)



Product Compliance:

- ASME A112.18.1 / CSA B125.1
- ANSI A117.1 (ADA)

Grand - Wide Spread Roman Tub Faucet



- * 5-5/16" High and 7-1/8" Long One Piece Solid Cast Brass Spout, Zinc Handle
- * Solid Brass Waterway Construction with 1/2" -14 NPSM Connection
- * 1/4 Turn Premium Grade High Flow Rate Ceramic Cartridges (Type K)
- * Brass Tube Spout, Zinc Handle
- * Flow Rate: 18.0GPM @ 80PSI
- * 100% Pressure System Tested
- * Lifetime Limited Warranty; 5 year warranty from date of purchase for Commercial users.

Project / Job Name	
Architect / Engineer	
Contractor	
Model	
Quantity	

Model No. :



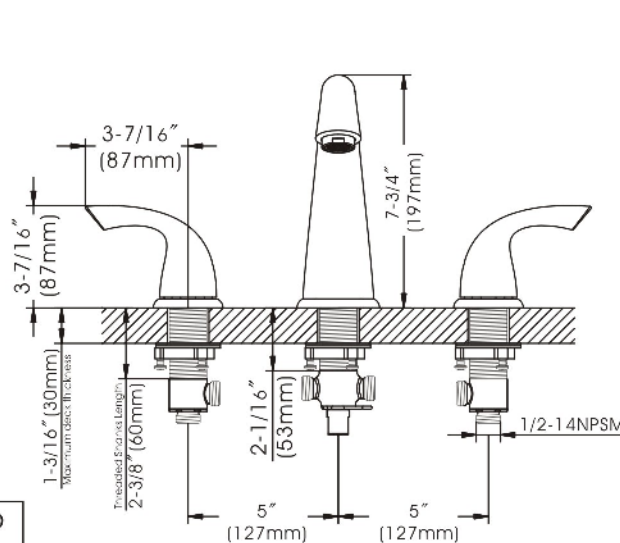
211-6602 (CH)



211-6603 (BN *Spotless PVD*)



211-6604 (ORB)
(Shown Model)



Cartridge (Type K)



Product Compliance:

- ASME A112.18.1 / CSA B125.1
- ANSI A117.1 (ADA)

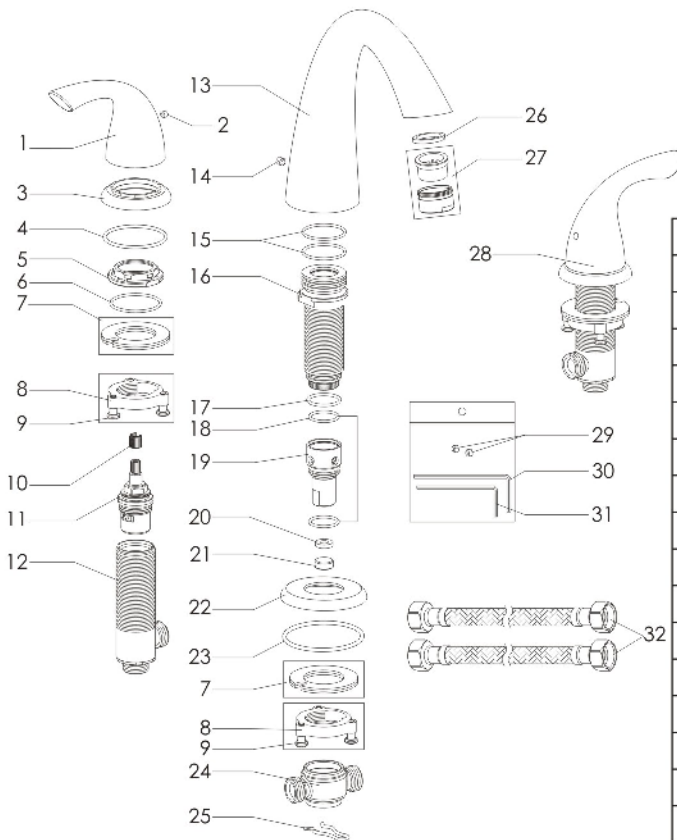
Grand - Wide Spread Roman Tub Faucet

Model No. :

211-6602 (Polished Chrome)

211-6603 (Brushed Nickel **Spotless PVD**)

211-6604 (Oil-Rubbed Bronze)



No.	Part Name	Material
1	Handle	Zinc
2	Set Screw	Stainless Steel
3	Handle Flange	Zinc
4	O-Ring	Rubber
5	Cartridge Lock Nut	Zinc
6	O-Ring	Rubber
7	Clamp	Rubber+Stainless Steel
8	Lock Nut	Zinc
9	Screw	Stainless Steel
10	Handle Adapter	Plastic
11	Cartridge(Hot Water)	Brass
12	Brass Valve Body	Brass
13	Spout	Brass
14	Set Screw	Stainless Steel
15	O-Ring	Rubber
16	Shank	Brass
17	O-Ring	Rubber
18	O-Ring	Rubber
19	Diverter	Brass
20	Washer	Rubber
21	End Cap	Brass
22	Spout Flange	Zinc
23	O-Ring	Rubber
24	Spout Brass Tee	Brass
25	Clip	Stainless Steel
26	Aerator Washer	Rubber
27	Aerator	Plastic+Brass
28	Cartridge(Cold Water)	Brass
29	Button	Rubber
30	Allen Key	Steel
31	Allen Key	Steel
32	Connect Hose	Stainless Steel

Cartridge (Type K)



Technical Support: warranty@cmiproduet.com
Hour of Operation: Mon - Fri 8:30 a.m - 5:00 p.m. EST