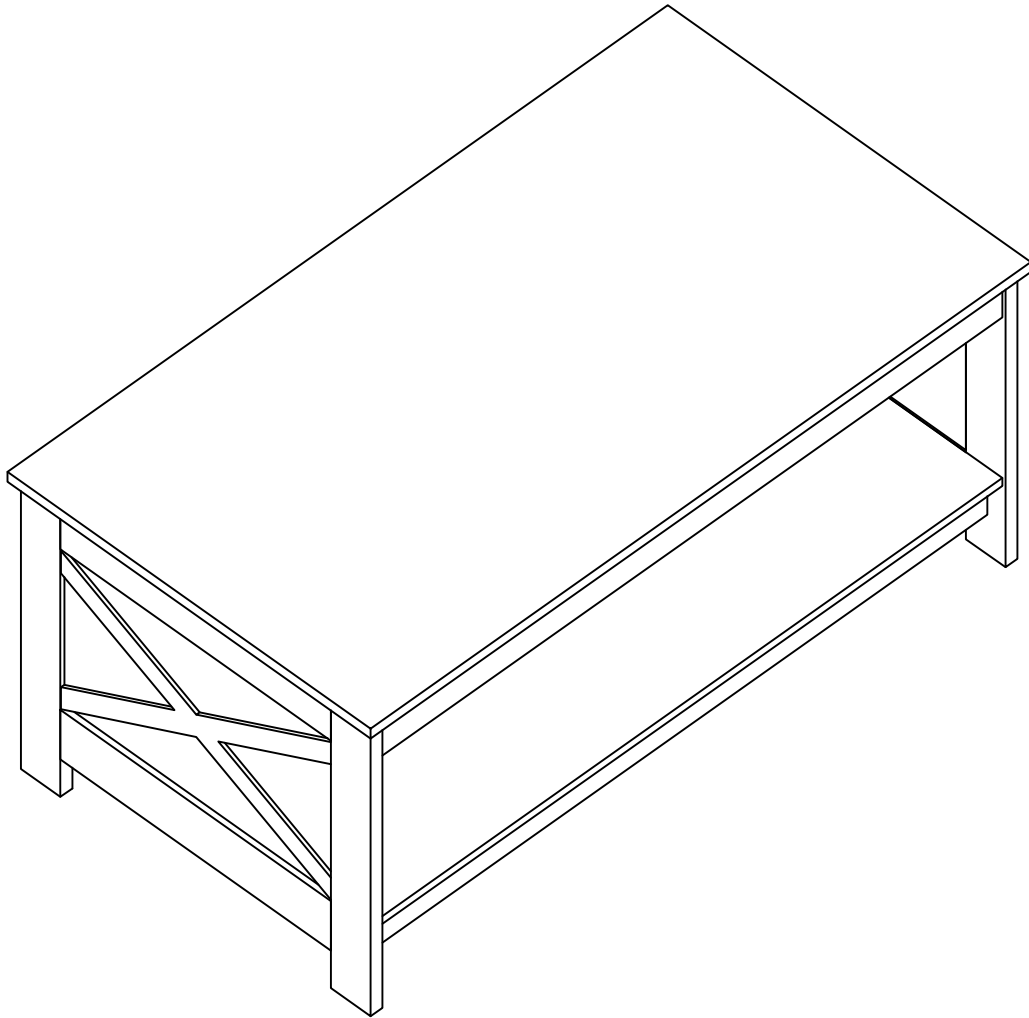


ASSEMBLY INSTRUCTIONS

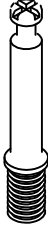



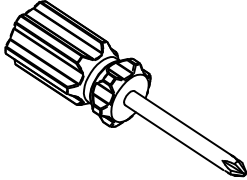
JC-CJ-002



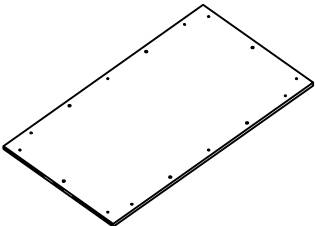
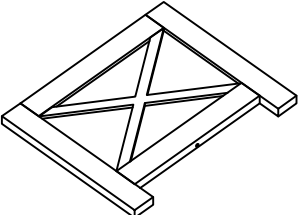
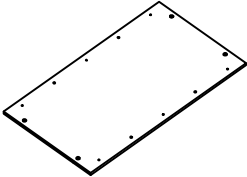
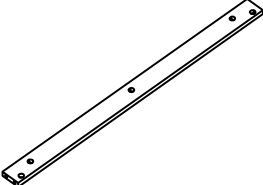
Notice:

1. Please unbox the item from the side with an open label and put a carpet on the floor to avoid scratching it.
2. Follow the installation instructions carefully. Before installation, please ensure that all accessories are present. For large items, we advise you to install them with 2 or more people for faster and safe installation.
3. Do not fully tighten the screws during initial assembly. Fully tighten the screws only once all pieces are correctly assembled. Do not assemble with high-powered power tools.
4. Do not stand, climb, or swing on the product.
5. If you encounter any problems during installation, please contact our customer service.

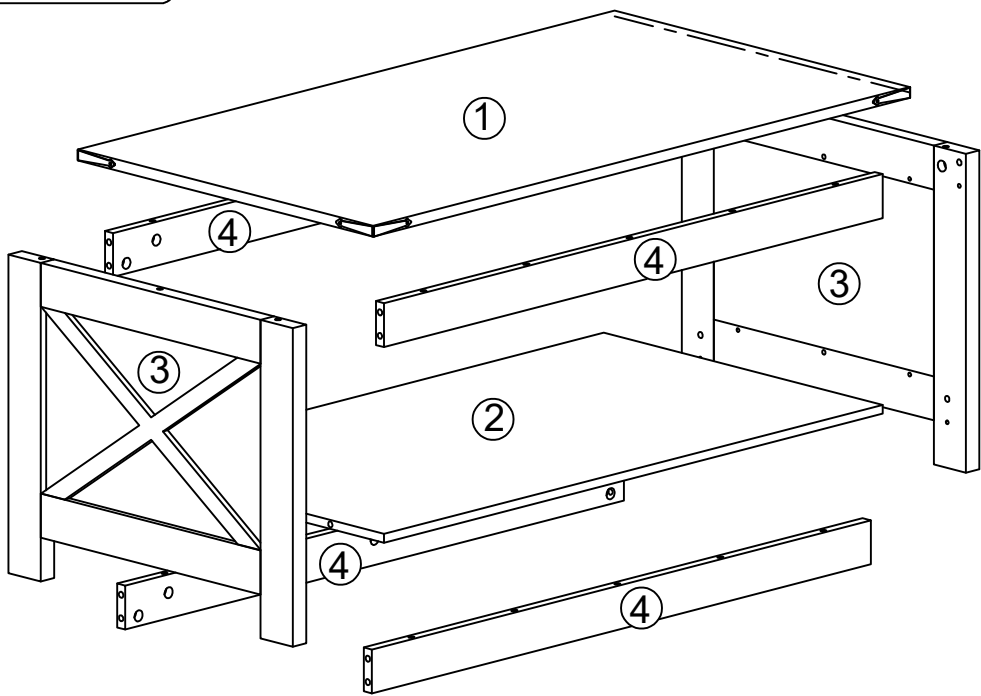
ASSEMBLY INSTRUCTIONS

Item no.	Reference Image	Qty.	Item no.	Reference Image	Qty.
Ⓐ	 M6×40	X30	Ⓔ	 Ø8×30	X24
Ⓑ	 	X30	Ⓕ	 Ø6×30	X3
Ⓒ	 	X1			

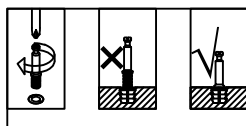
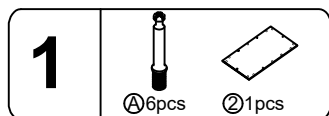
ASSEMBLY INSTRUCTIONS

Item no.	Reference Image	Qty.	Item no.	Reference Image	Qty.
①		X1	③		X2
②		X1	④		X4

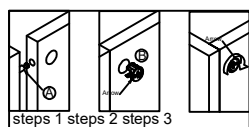
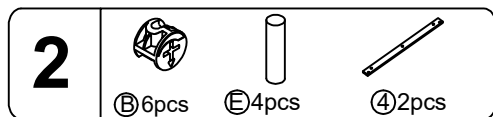
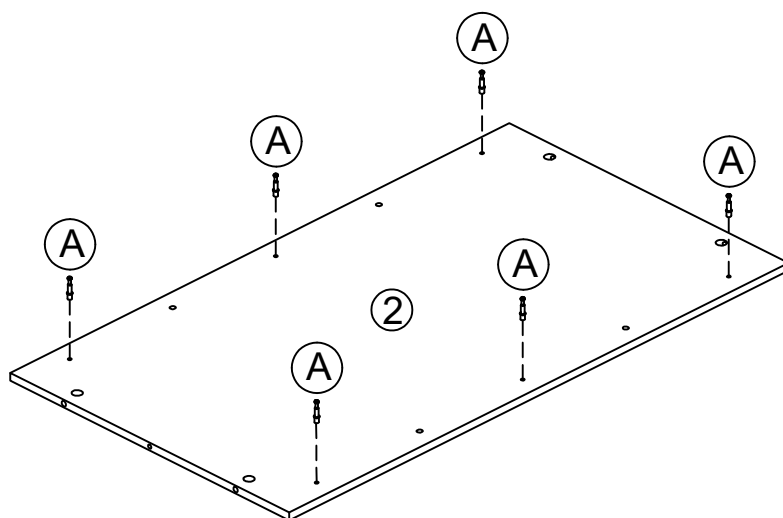
Explosion Diagram



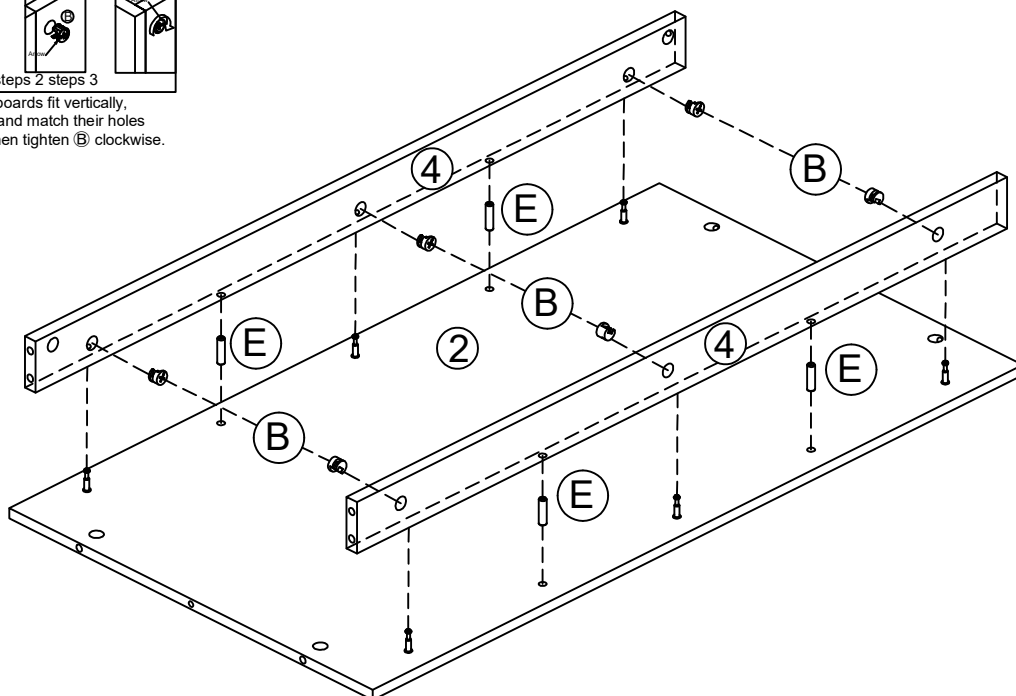
ASSEMBLY INSTRUCTIONS



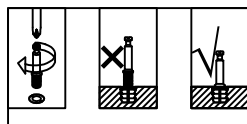
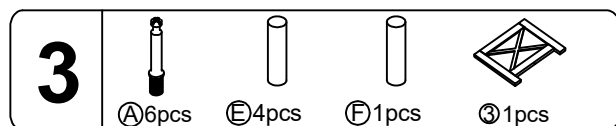
Tighten (A) clockwise until all of their threads are engaged.



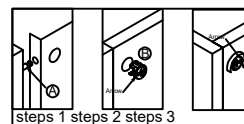
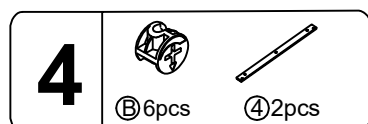
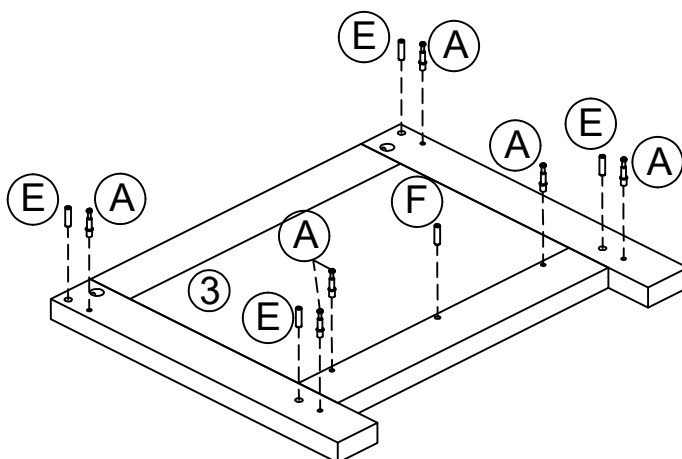
The two boards fit vertically, place (B) and match their holes with (A) then tighten (B) clockwise.



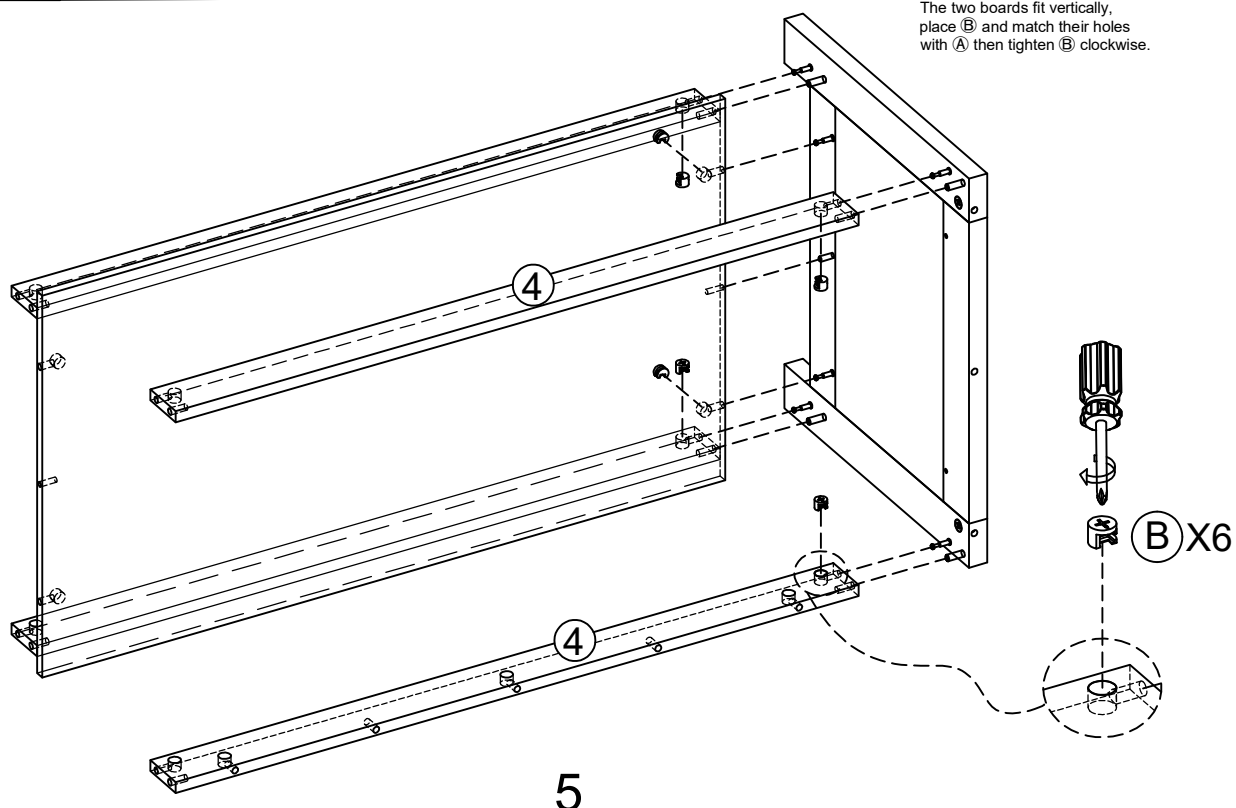
ASSEMBLY INSTRUCTIONS



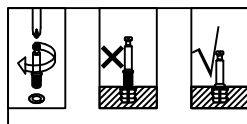
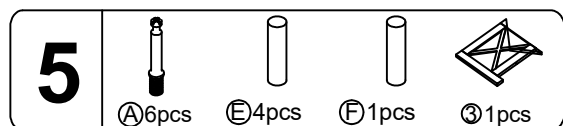
Tighten Ⓐ clockwise until all of their threads are engaged.



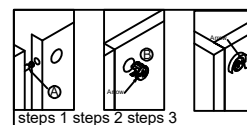
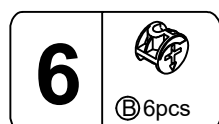
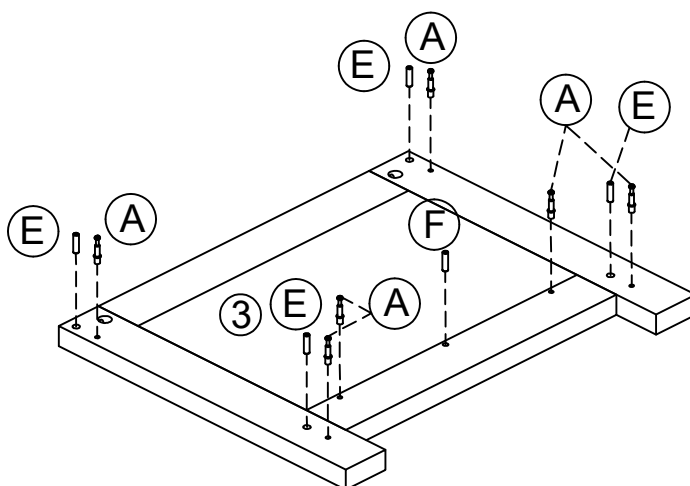
The two boards fit vertically, place Ⓑ and match their holes with Ⓐ then tighten Ⓑ clockwise.



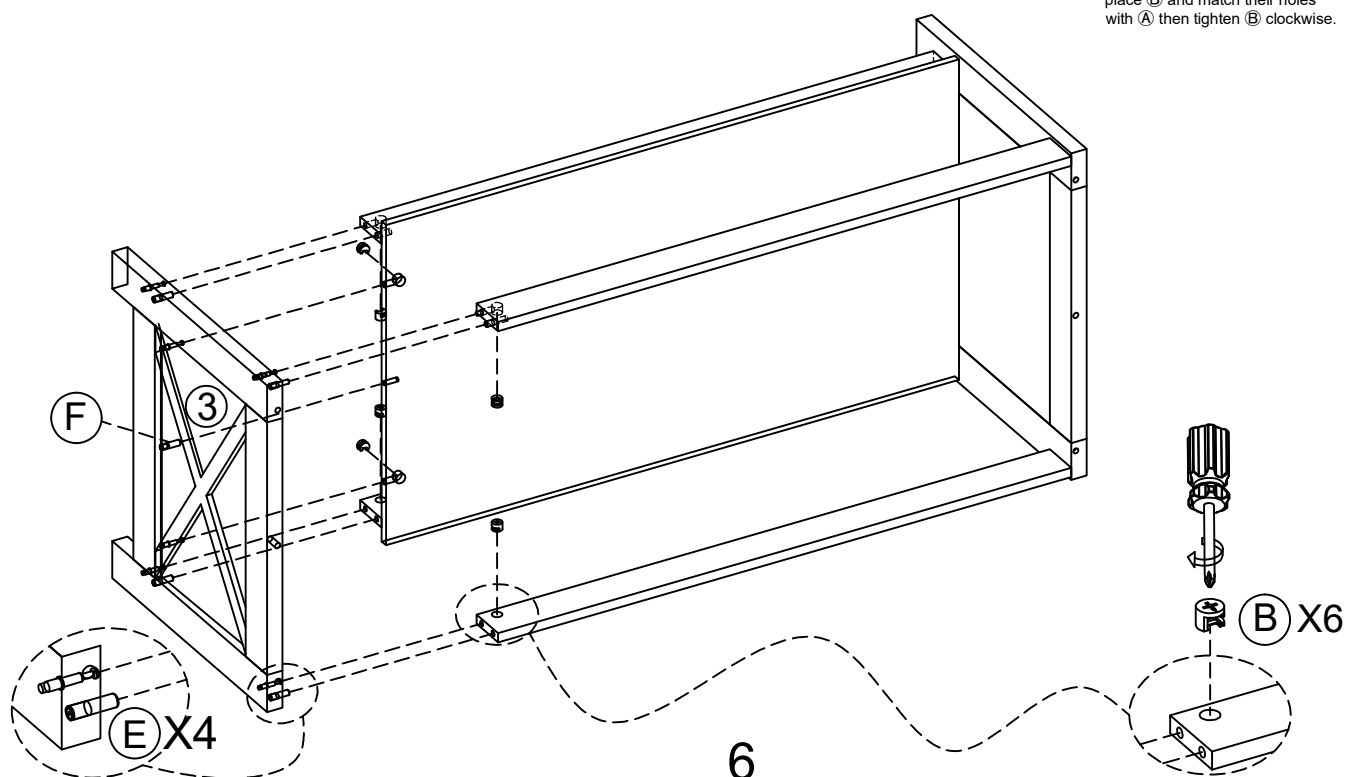
ASSEMBLY INSTRUCTIONS



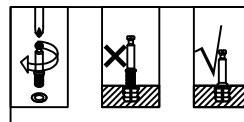
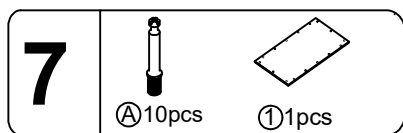
Tighten Ⓐ clockwise until all of their threads are engaged.



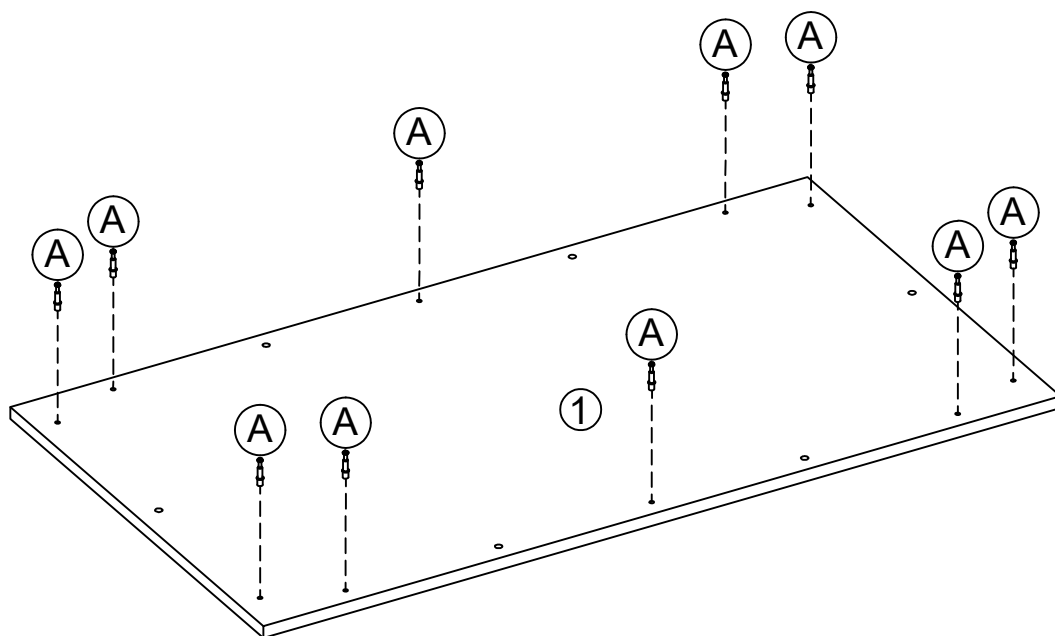
The two boards fit vertically, place Ⓑ and match their holes with Ⓐ then tighten Ⓑ clockwise.



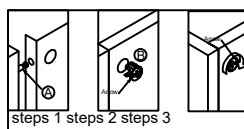
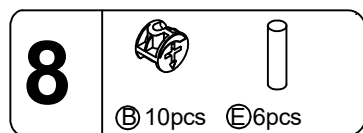
ASSEMBLY INSTRUCTIONS



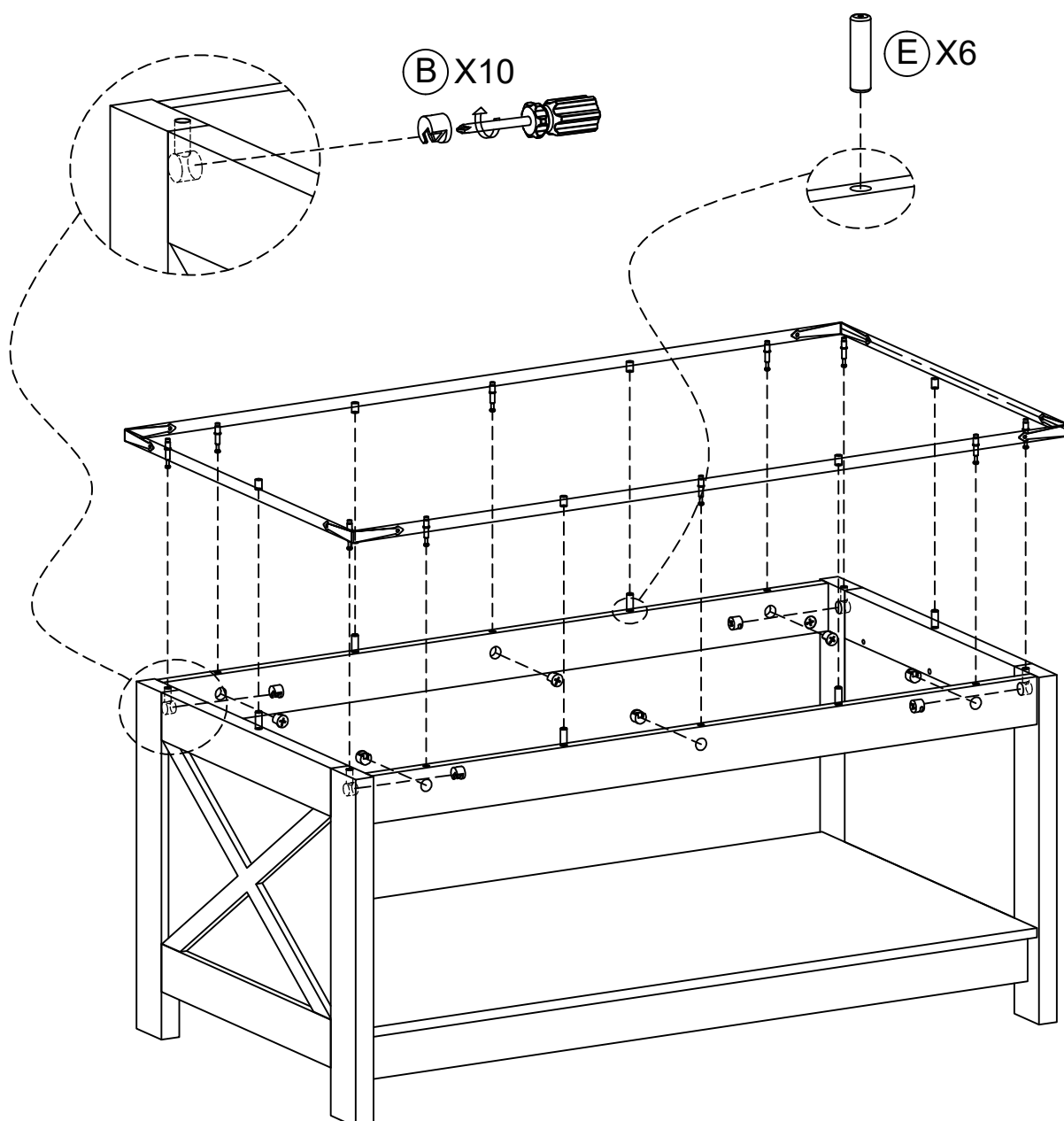
Tighten Ⓐ clockwise until all of their threads are engaged.



ASSEMBLY INSTRUCTIONS



The two boards fit vertically,
place Ⓑ and match their holes
with Ⓐ then tighten Ⓑ clockwise.



ASSEMBLY INSTRUCTIONS

