

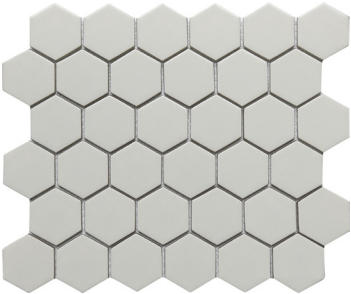


# CONCEPT™

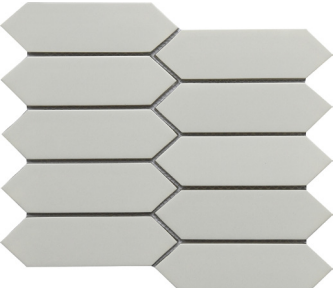
*Glazed Glass Mosaic*

Concept™ is a glazed glass mosaic that resembles porcelain tile. The modern shapes and neutral tones offer striking designs for walls. This series is available in a glossy finish for added interest.

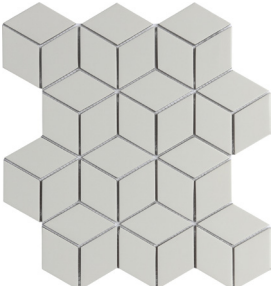
Fawn 2" Hex



Fawn Picket



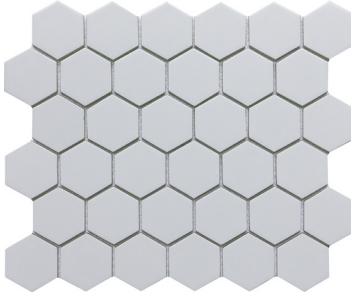
Fawn Cube



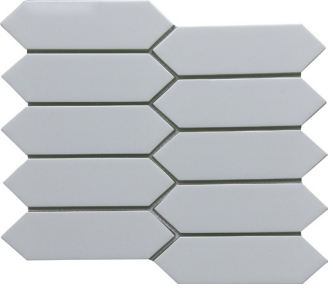
Fawn Chevron



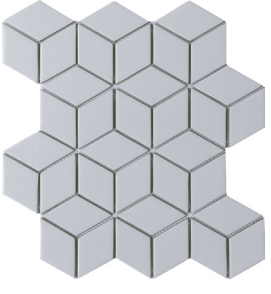
Gray 2" Hex



Gray Picket



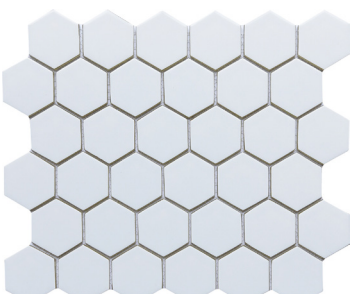
Gray Cube



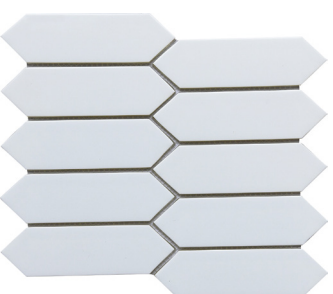
Gray Chevron



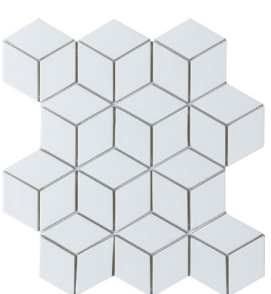
White 2" Hex



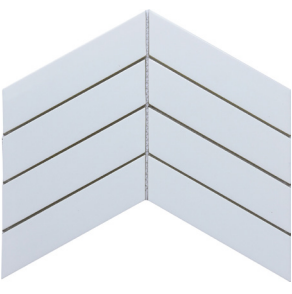
White Picket



White Cube



White Chevron



All Hex Colors Available  
on 11"x12" Mesh

All Picket Colors Available  
on 8"x10" Mesh

All Cube Colors Available  
on 10"x12" Mesh

All Chevron Colors Available  
on 8"x12" Mesh

Sizes & Trim <small>Tile thickness could vary based on size. Larger format tiles will have a higher thickness.</small>				Thickness	Technical Specifications	
				All sizes - 6mm	Test Method	Shade Variation
11"x12" Mesh 10.62"x12.4"	8"x10" Mesh 8.34"x12.4"	10"x12" Mesh 10.24"x11.81"	8"x12" Mesh 8.34"x12.4"		Results	V1