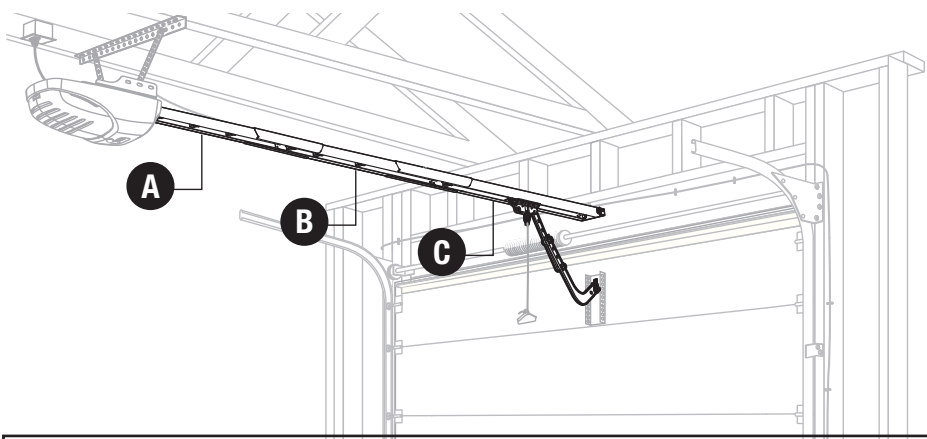
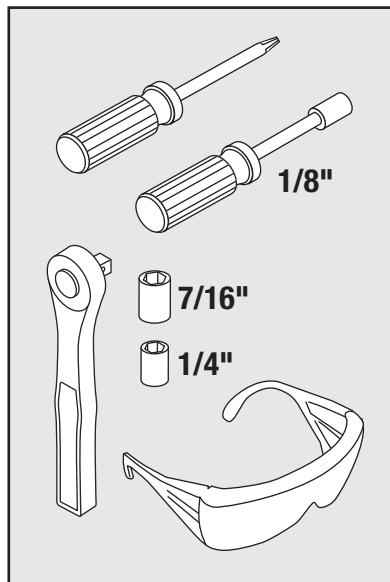


## Chain/Belt Drive Models

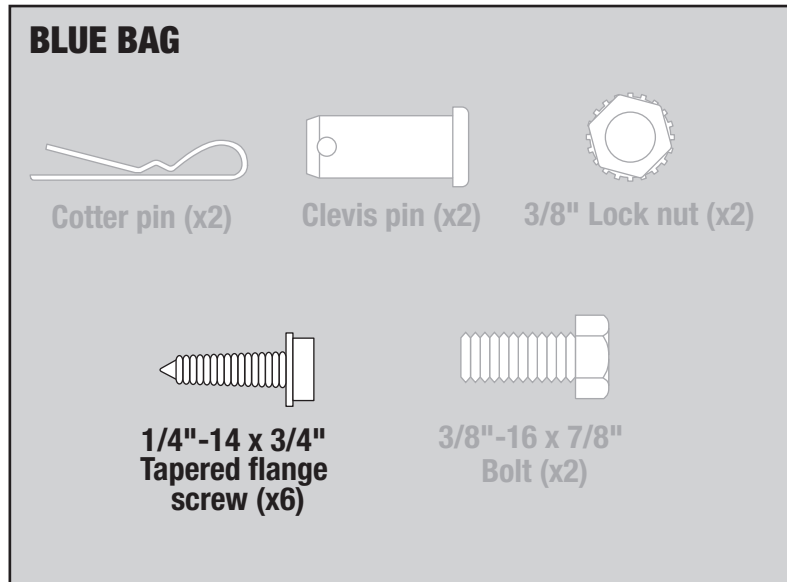


Thank you for your purchase of a Genie® rail. The following instructions **ONLY** cover "Rail Assembly". Complete installation instructions, pre-installation considerations and, all warnings for installations of Genie® garage door openers are provided with your purchase of a Genie® Powerhead assembly.

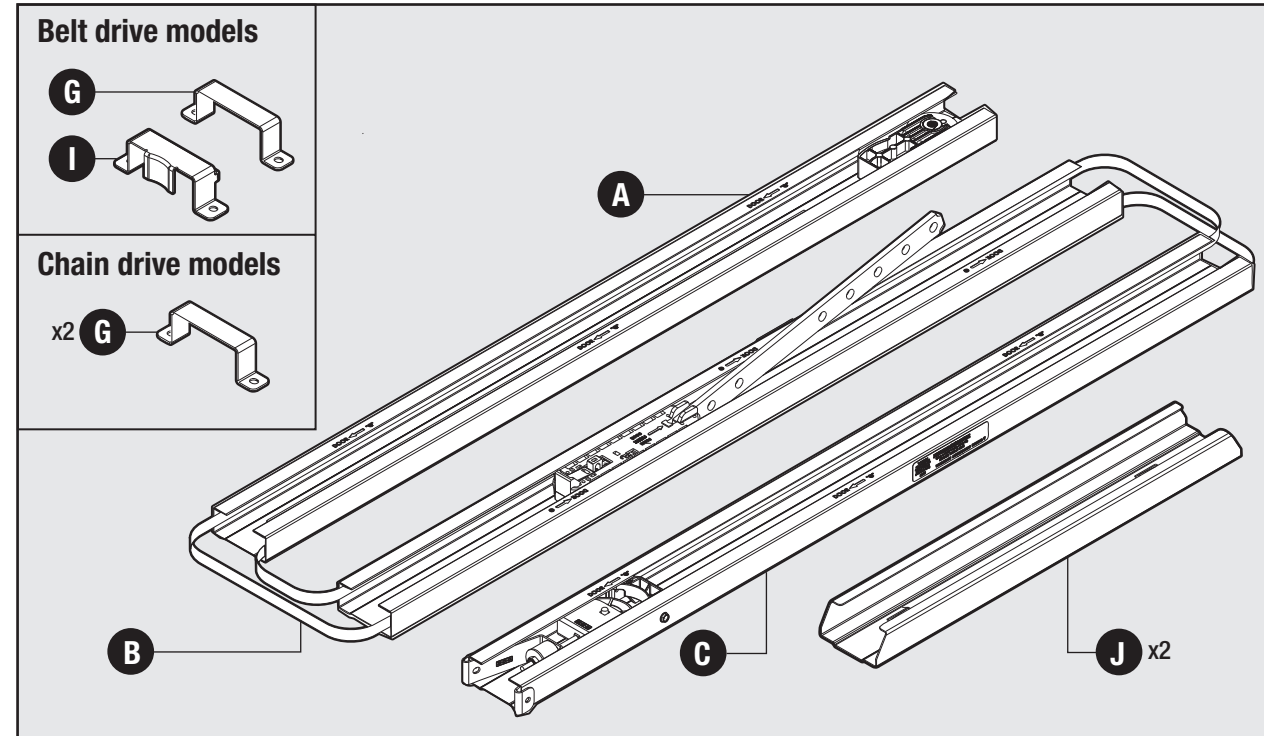
### Recommended Tools



### Hardware Bags



### Parts Included



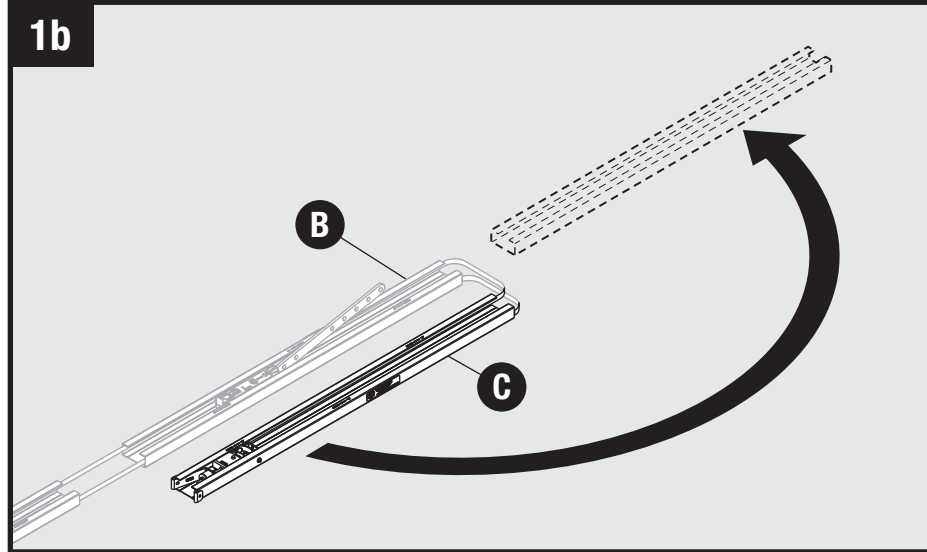
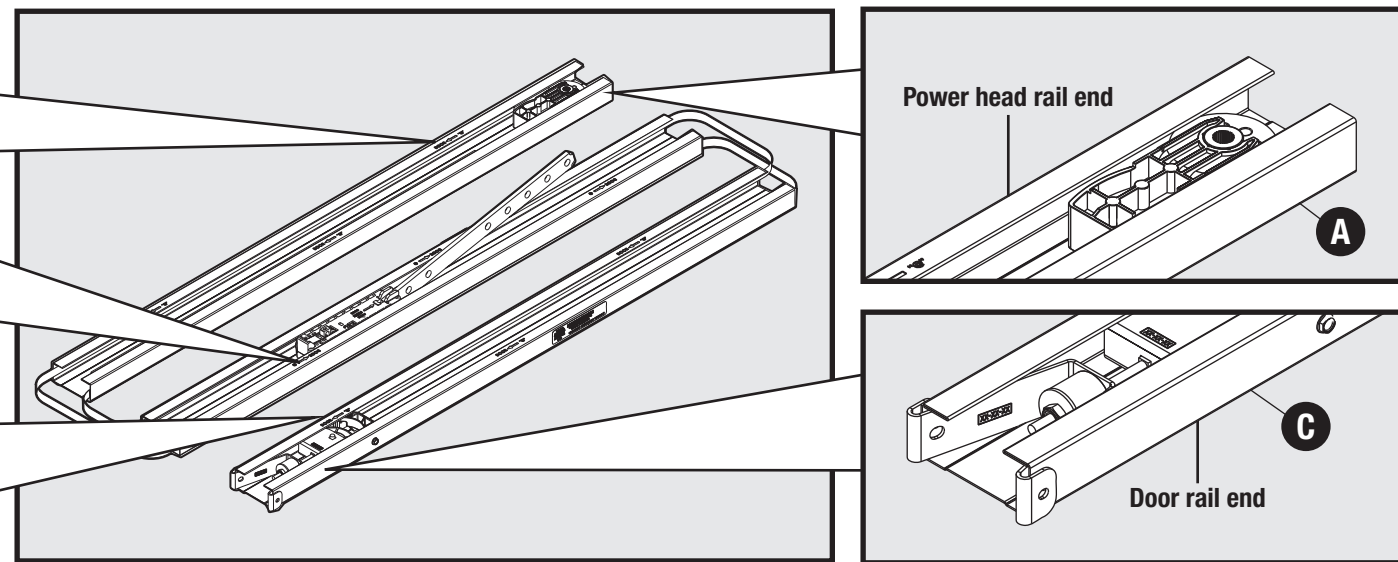
## 1 Rail Assembly (GREEN BAG hardware)



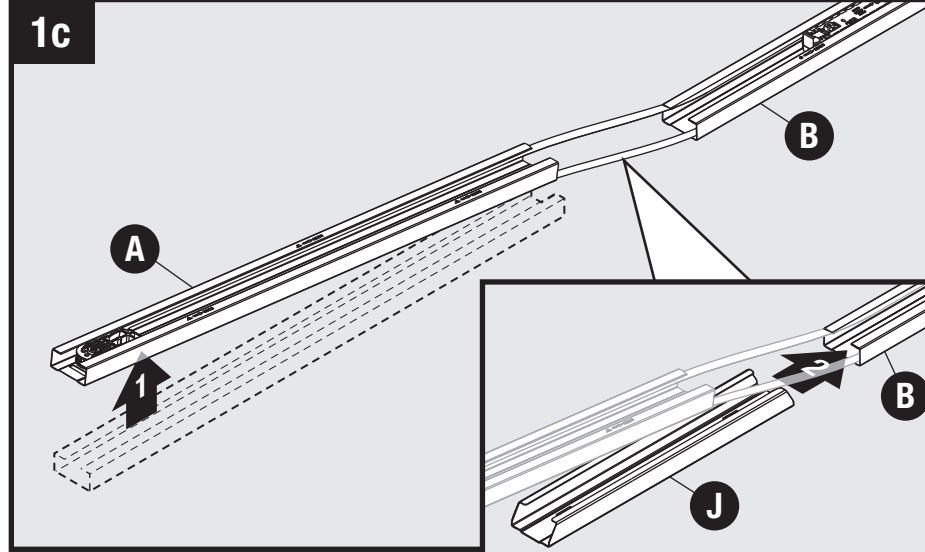
DOOR ← A

DOOR ← B

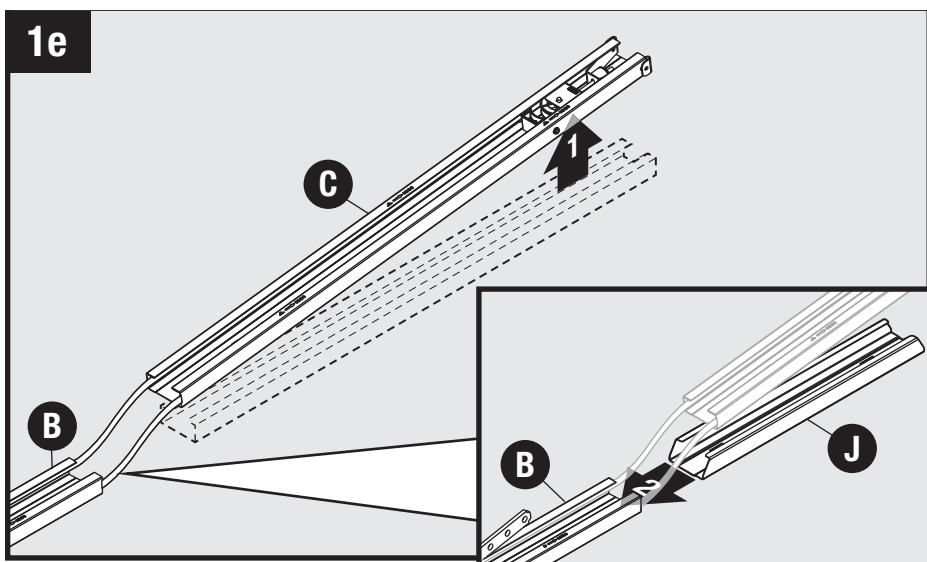
DOOR ← C



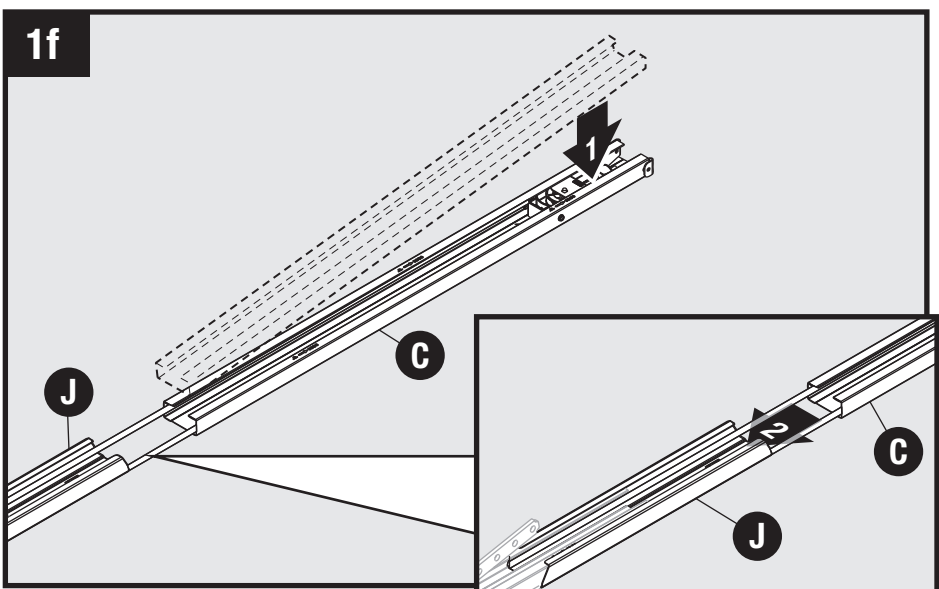
Slide the door end rail section (C) to correct position.



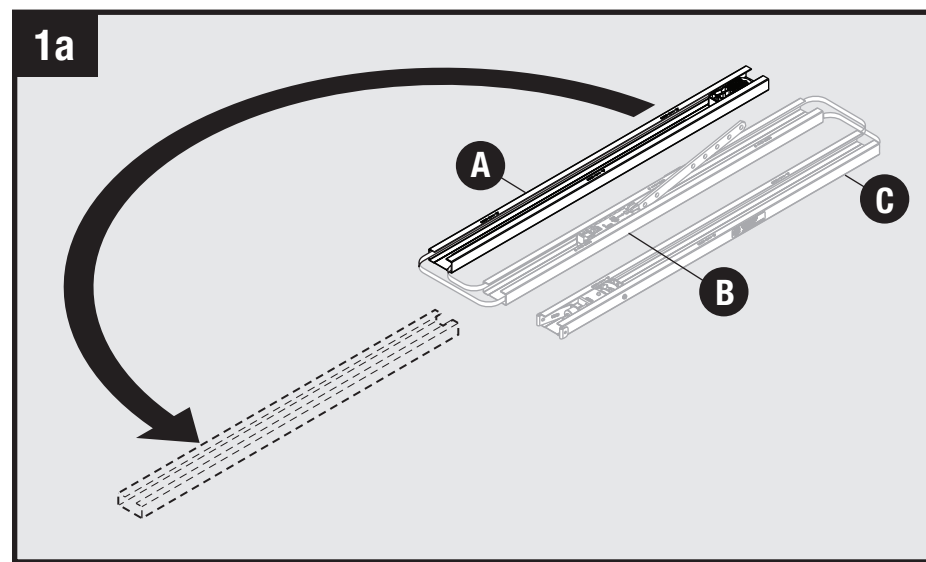
Lift opener rail section (A) slightly and slide rail connector (J) onto middle rail section (B).



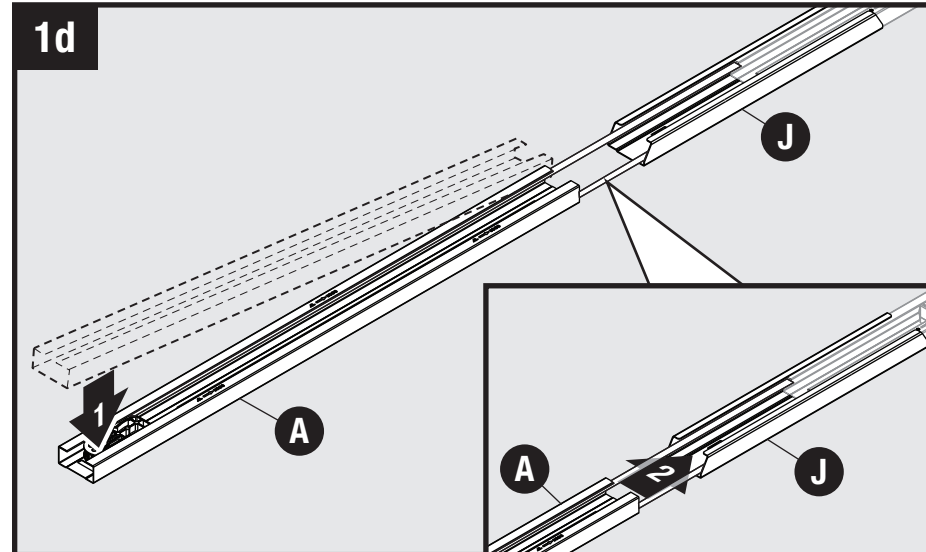
Lift door end rail section (C) slightly and slide rail connector (J) onto middle rail section (B).



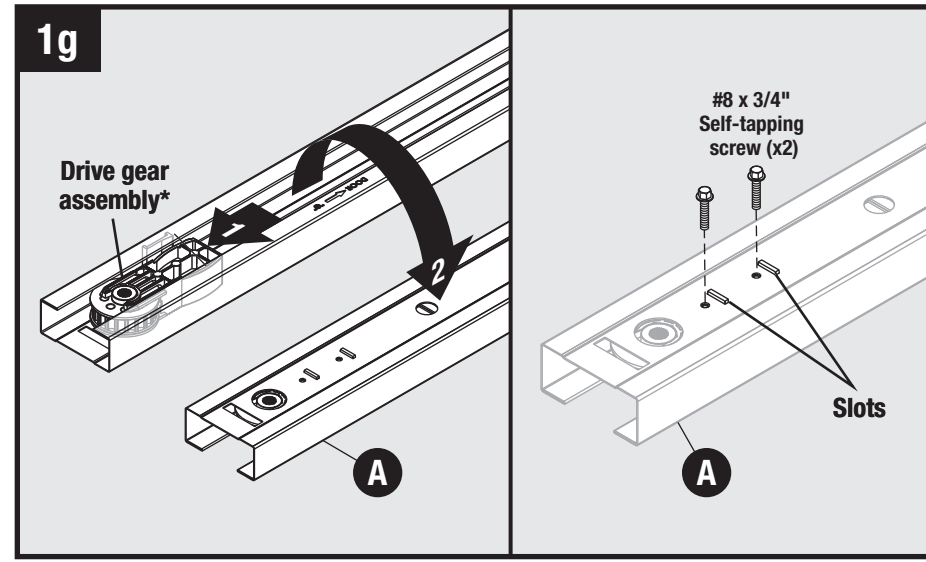
Lower door rail end section (C) and slide into rail connector (J) until it locks.



Slide the opener end rail section (A) to correct position.

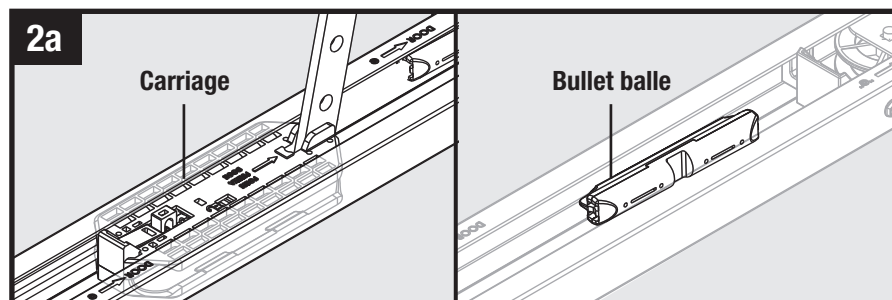


Lower opener rail end section (A) and slide into rail connector (J) until it locks.

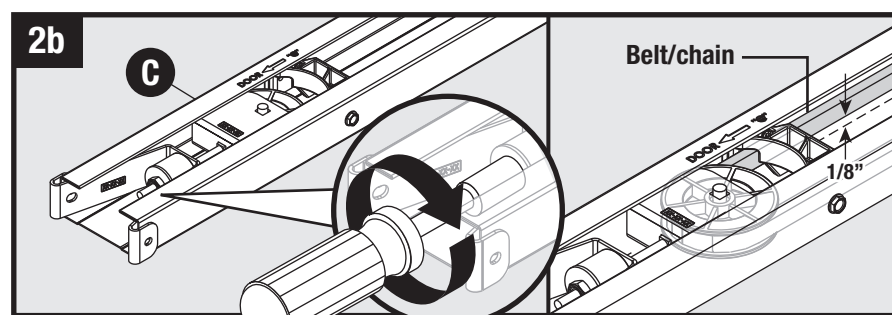


Slide gear assembly to front end of opener end rail section (A). Turn rail assembly over and place drive gear assembly in slots. Insert two screws to fasten assembly to the rail.

## 2 Adjusting Rail Tension

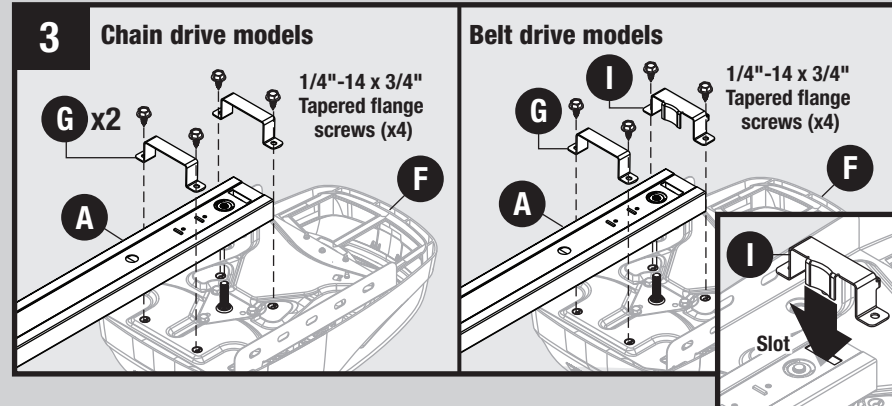


The chain/belt needs to be tightened inside the rail. Make sure carriage and bullet are not engaged.



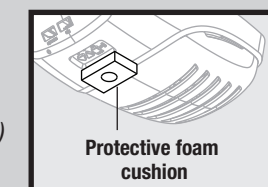
Tighten tension nut until chain/belt is approximately 1/8" above bottom edge of rail.

## 3 Attaching Rail to Powerhead (BLUE BAG hardware)



Lower drive gear over spline shaft on top of opener. Place rail mounting bracket(s) (G) over rail (A) and align with holes in opener. On Belt drive models, align belt guide bracket (I) tongue with slot and align holes in opener. On Chain drive models, utilize a second mounting bracket (G) and with holes in opener. Fully tighten 1/4" x-14 x 3/4" screws. **Do Not** overtighten.

**Note:** To prevent damage to motion sensor (not on all models) **DO NOT** remove foam cushion from underside of powerhead until installation is complete.



**Note:** To complete installation of your garage door opener (rail and powerhead) please refer to and continue with Step 3 on the "Assembly and Installation Poster" of the Genie® Powerhead instructions.