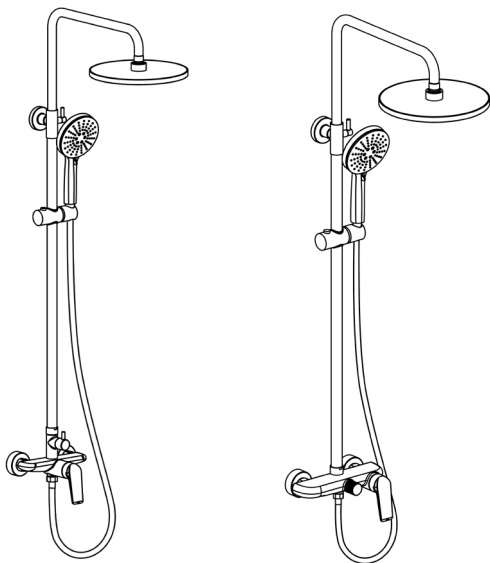


INSTALLATION MANUAL



Style may vary by model, but the installation ways are the same

1. Notes before installation

1. Please check that all components are present.
2. Before installation ensure that all feed lines are clear of debris and on / off valve is present.
3. Pictures in the manual are general in content and may not represent exactly your purchased faucet. If you are having difficulties please contact a professional plumber.
4. If you will be away from home for an extended period you should shut off the main water supply.

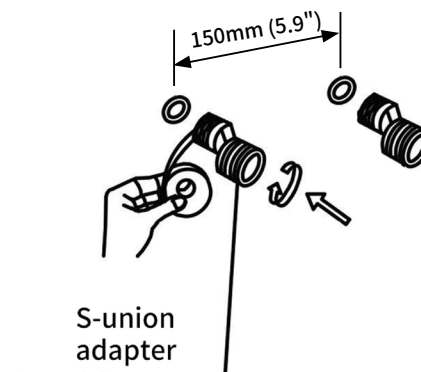
2. Installation Preparation

1. Read the instructions carefully before installing.
2. The installation must be performed by a qualified person.
3. Installation tools:



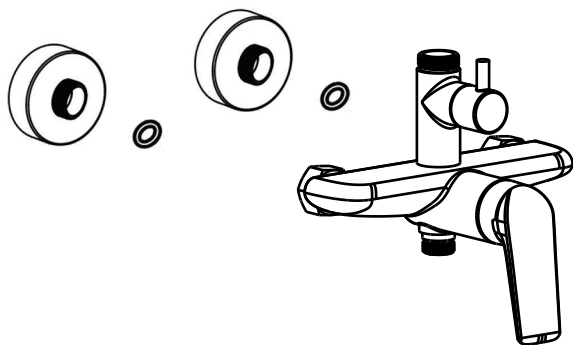
1

1. As shown, wrap the the S-union adapter with tape and install it.



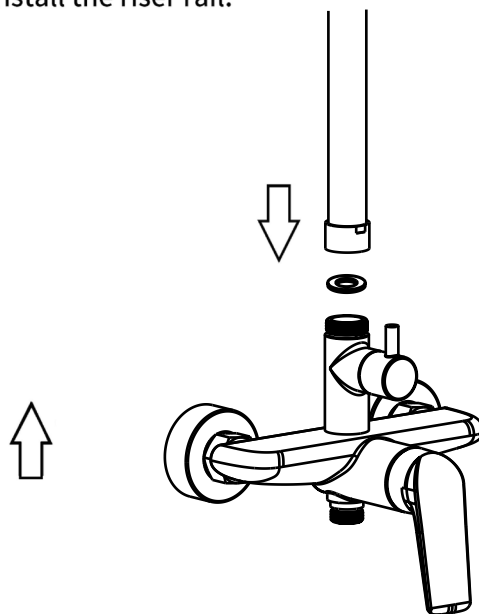
2

2. Install the cover caps and the main body (ensure the rubber gaskets are in the positions).



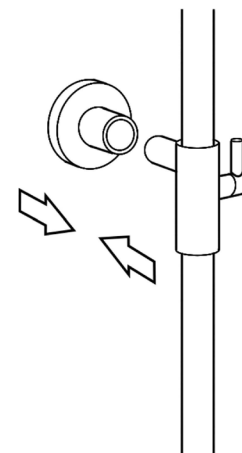
3

3. Install the riser rail.



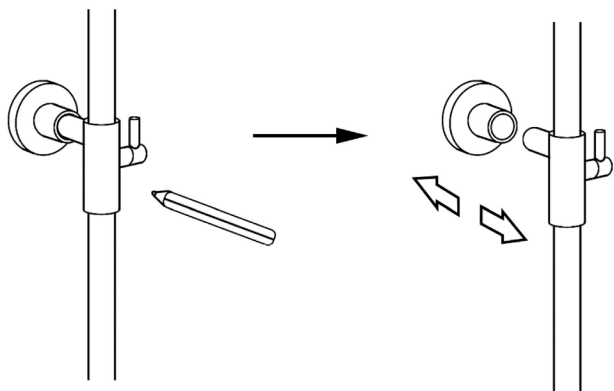
4

4. Install the mounting piece on the riser rail.



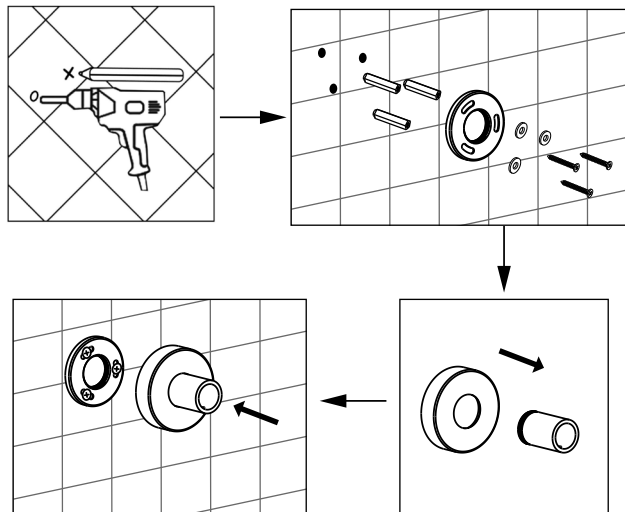
5

5. Make sure the riser rail is vertically, mark the position of the screw holes, and then remove the riser rail and the mounting piece.



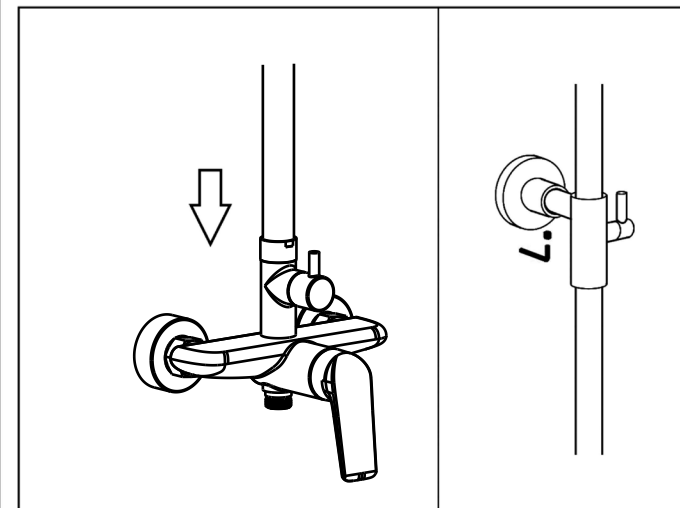
6

6. Drill holes and install the anchors, and mounting piece as shown.



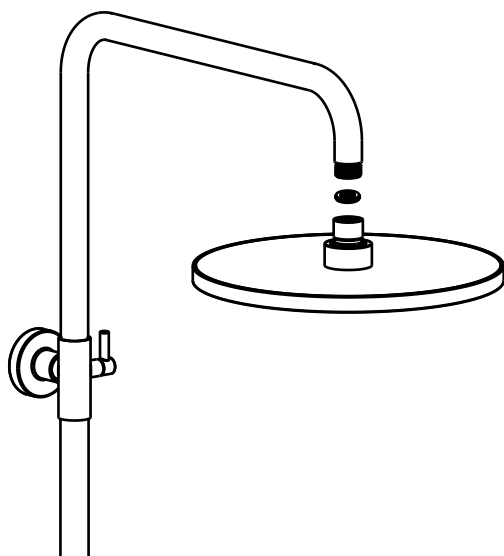
7

7. Install the riser rail on the faucet, tighten the screw.



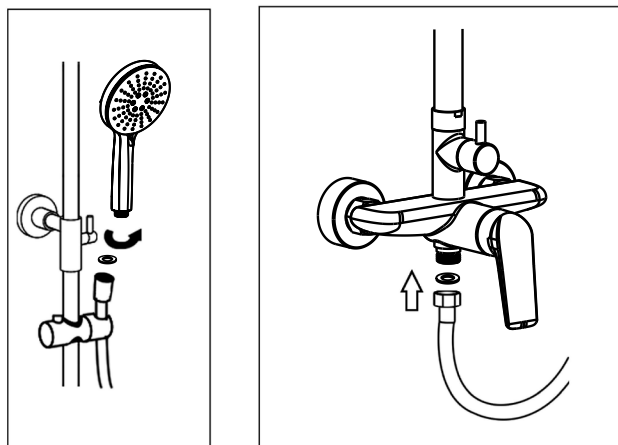
8

8. Install the shower rain head.



9

9. Place the hose washer in the short hose end connection. Connect this end of the hose to the faucet. Place the screen washer in the long hose end connection. Install the hand shower on this end of the hose. Place rest the hand shower in the holder.



10

Cleaning & Maintenance

1. Flush with clean water & dry with soft cloth only.
2. If any dirt, clean with soft liquid or transparent glass detergent.
3. Do not use any scrubbing detergent, polisher, sand-cloth, paper tissue or scraper.
4. Do not use acid detergent, insoluble & grain-like detergent or soap.

11