



INSTALLATION INSTRUCTIONS

UDWM Direct Wire Module

For use with Juno ULH Series Undercabinet Fixtures

This Direct Wire Module is for use with Juno ULH Series undercabinet fixtures. This Module is designed to be wired with Flat Non-Metallic Cable (NMB) (2C+Ground), or Flexible Metal Conduit (BX).

NOTE: Electrical connector for BX installations is supplied with fixture or may be purchased separately.

SAVE THESE INSTRUCTIONS

IMPORTANT SAFETY INSTRUCTIONS

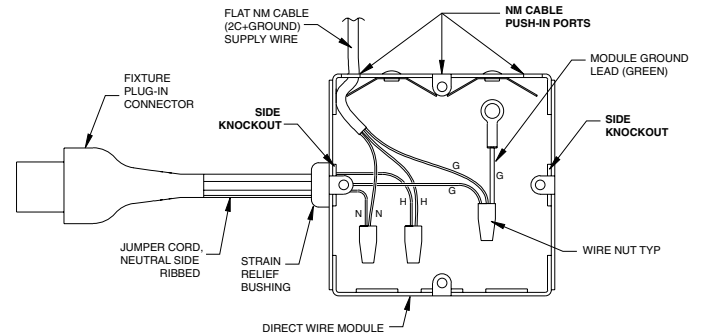
1. Read all instructions before beginning installation. Safely store these instructions for future reference.
2. This module is for use with Juno ULH fixtures and accessories. Do not use this module or the provided jumper cord with any other products.
3. **WARNING: FOR MULTIPLE FIXTURE INSTALLATIONS, MAKE CERTAIN FIXTURES ARE CONNECTED TO BRANCH CIRCUIT AT ONLY ONE FEED POINT.**
4. **CAUTION: Do not exceed 5 AMPS maximum load**
5. For use with 120V 60Hz. power supply only.
For interior use only.
6. **WARNING: DO NOT ELECTRIFY THE MODULE UNTIL THE FOLLOWING CONDITIONS HAVE BEEN MET:**
 - a. **MOUNTING AND WIRING OF MODULE IS COMPLETE.**
 - b. **THE MODULE COVER HAS BEEN INSTALLED WITH SCREWS & LOCKWASHERS SECURELY FASTENED.**
 - c. **ALL FIXTURES CONNECTED TO MODULE HAVE BEEN MOUNTED AND THEIR DIFFUSERS / LENSES HAVE BEEN PROPERLY INSTALLED.**
 - d. **ALL OPEN ELECTRICAL PORTS ON CONNECTED FIXTURES ARE COVERED WITH ELECTRICAL PORT COVERS PROVIDED WITH THE FIXTURES.**
7. **WARNING: TO PREVENT OVERHEATING DO NOT INSTALL IN SMALL ENCLOSED SPACES. TO PREVENT ELECTRICAL SHOCK DO NOT INSTALL IN WET ENVIRONMENTS.**
8. Qualified electricians, in accordance with local electrical codes, should perform all installations.
9. Fixtures may be dimmed using quality household dimmers or dimmer systems designed for non-inductive loads. For best dimming performance, use dimmer systems specifically designed for low voltage electronic transformers.
10. Always disconnect electrical power from this product before cleaning or servicing.
11. Do not operate this product if jumper cord has been damaged.
12. Keep jumper cord away from sources of heat and heated surfaces.
13. Do not operate this product in environments where aerosol sprays are being used or where oxygen is being administered.

UDWM Direct Wire Module Installation

1. Turn off power for appropriate electrical circuit at electrical service panel.
2. Remove module cover screws and cover. Save screws and lockwashers.
3. Prepare BX or Flat NM cable (2C+Ground) by stripping conductor ends approximately 1/2".
4. **For Installation Using NM Cable Push-In Ports:** Insert NM cable through desired **PUSH-IN PORT** in module as shown. NM cable outer jacket must protrude thru push-in port to adequately protect internal conductors. Two ports can be used for loop-feed supply wiring if desired. Proceed to step 6.
5. **For Installation Using 3/8" All-Purpose Connector:** Remove desired **REAR KNOCKOUT** and attach 3/8" connector to module as shown. Affix connector to electrical supply (BX or NM). NM cable outer jacket must protrude thru connector to adequately protect internal conductors. Tighten locknut and clamping screws on connector fitting securely. Two connectors can be used for loop-feed supply wiring if desired.
6. Determine mounting orientation and remove **one SIDE KNOCKOUT** on desired side of module for jumper cord attachment. The rear knockouts can also be used for jumper cord attachment if desired. The jumper cord is field shortenable. Position strain relief bushing on jumper cord at desired location, compress bushing and insert into module at **SIDE KNOCKOUT**. Cut off excess cord and re-strip conductor ends approximately 1/2" for shortened cord lengths. Leave adequate length for connection to supply conductors and ground lead.
7. Connect the jumper cord conductors to the supply conductors and module ground lead using wire nuts provided. Note that the ribbed side of the jumper cord is the neutral conductor. The jumper cord center conductor with green insulation is the ground conductor. If using NM cable, the NM cable **must** have a ground wire connected to the module ground lead and the jumper cord ground conductor. Supply wires are typically color-coded: hot-black, neutral-white, ground-green or bare copper.
8. Push excess electrical supply wire back into wall and locate module on mounting surface. Affix module to underside of cabinet with screws provided. Be careful not to drive screws all the way through the cabinet bottom. Use shorter screws if necessary.
9. Replace and secure module cover with supplied hardware. Make certain **all** hardware is replaced and properly tightened. Make certain lockwashers are located beneath screw heads to properly ground cover.

10. Follow installation instructions provided with ULH undercabinet light fixture. Mount fixture, remove electrical port cover and plug jumper cord (supplied with module) into electrical port on fixture.
11. Make sure all fixtures connected to the module have their diffusers/lenses properly installed. Make sure all open electrical ports on the fixtures are safely enclosed with port covers provided with fixtures.
12. Restore circuit power at electrical service panel. Turn on switches at each individual fixture.

INSTALLATION USING NM CABLE PUSH-IN PORTS



INSTALLATION USING 3/8" ALL-PURPOSE CONNECTOR

