



# Instruction Manual

Item# HT9737LG



## Having Trouble?

Chat with us on your phone

Simply point your phone camera towards  
the QR code or see our website



**xbrand.us**

or email at

**customerservice@ecintel.com**

**Monday - Friday 7:00AM - 3:30PM PST**

## INDOOR MANUAL CONTROL FIRE STOVE



### Purchased your product online?

We would really appreciate it if you can share your experience  
with others by reviewing our product on the website from  
which you purchased.



### Have Questions or Issues? Need help with assembly?

Contact us and we will resolve immediately.

Simply point your phone camera towards the QR code or see our website

**Support Hours M-F 7:00AM - 3:30PM (U.S Pacific Time)**



Chat with us:  
**xbrand.us**



Email:  
**customerservice@ecintel.com**



Call:  
**951-319-4433**

### Limited 1-Year Manufacturer Warranty on xbrand.us

#### Manufacturer warranty covers:

- Parts that are deemed defective within 30 day will be shipped free of charge.
- Any warranty claim after 30 days, will require shipping to be paid by the customer.

Any visible damage due to the neglect, misuse, or abuse will void the limited warranty of the product.

For further information, please contact us:

Chat with us: [xbrand.us](https://xbrand.us)



Simply point your phone camera towards the QR code or see our website

Email: [customerservice@ecintel.com](mailto:customerservice@ecintel.com)

**Purchased your product online?**

**We would really appreciate it if you can share your experience with others by reviewing our product on the website from which you purchased.**



Please use your smart phone camera to scan the QR code.  
Simply point your camera and let the camera scan the  
code below, and click on the link that opens up.



[https://xbrand.us/product/  
ht9737lg/](https://xbrand.us/product/ht9737lg/)

|  |          |
|--|----------|
| <b>Contents .....</b>                  | <b>2</b> |
| <b>What is included .....</b>          | <b>3</b> |
| <b>Assembly instructions .....</b>     | <b>4</b> |
| <b>YouTube video instruction .....</b> | <b>5</b> |
| <b>Warranty .....</b>                  | <b>6</b> |

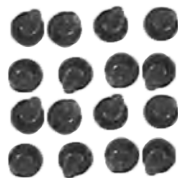
## What is included



A. Stove

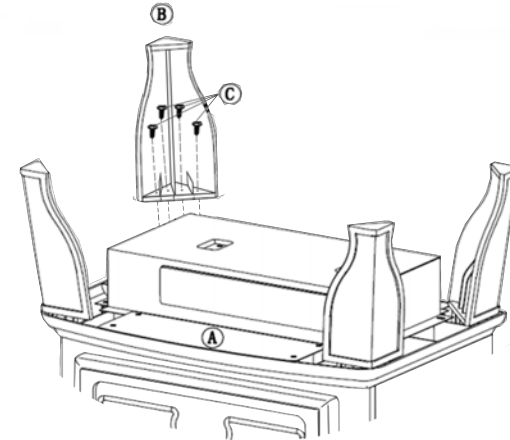


B. 4 x Legs

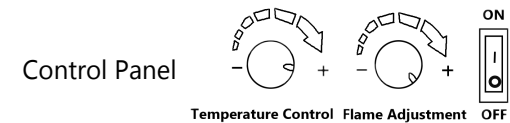


C. 16 x Screws

## Assembly instructions



Turn Stove upside down and align holes in the leg with holes in the corner of stove frame. Thread screws through the holes in each leg and tighten securely with screwdriver. DO NOT over-tighten the screws.



For complete instruction, please visit our website or see additional instructions provided in the box.

