



ITEM #2889555

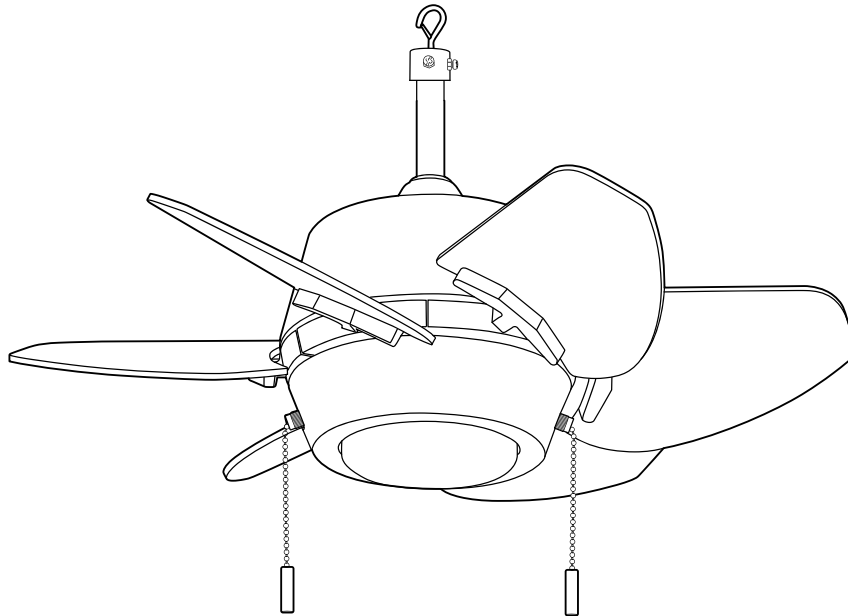
GASKIN CEILING FAN

MODEL #GAT24MBK6LOD

Harbor Breeze® and logo design are trademarks or registered trademarks of LF, LLC. All Rights Reserved.

Español p. 15

ATTACH YOUR RECEIPT HERE
ADJUNTE SU RECIBO AQUÍ



Intertek
4007498

APPROVED FOR USE IN
WET LOCATIONS

Purchase Date _____



Questions, problems, missing parts? Before returning to your retailer, call our customer service department at **1-888-251-1003**, 8 a.m. - 8 p.m., EST, Monday - Sunday. You could also contact us at partsplus@lowes.com or visit www.lowespartsplus.com

TABLE OF CONTENTS

Safety Information	2
Package Contents	5
Hardware Contents	6
Preparation	6
Initial Installation	7
Final Installation	9
Operating Instructions	12
Troubleshooting.....	13
Care and Maintenance	14
Limited Lifetime Warranty	14
Replacement Parts List	14



SAFETY INFORMATION

Caution: Changes or modifications not approved by the party responsible for compliance could void the user's authority to operate the equipment.

*NOTE: This equipment has been tested and found to comply with the limits for a Class B digital device, pursuant to Part 15 of the FCC Rules. These limits are designed to provide reasonable protection against harmful interference in a residential installation. This equipment generates, uses and can radiate radio frequency energy and, if not installed and used in accordance with the instructions, may cause harmful interference to radio communications. However, there is no guarantee that interference will not occur in a particular installation. If this equipment does cause harmful interference to radio or television reception, which can be determined by turning the equipment off and on, the user is encouraged to try to correct the interference by one or more of the following measures:

- * Reorient or relocate the receiving antenna.
- * Increase the separation between the equipment and receiver.
- * Connect the equipment into an outlet on a circuit different from that to which the receiver is connected.

Consult the dealer or an experienced radio/TV technician for help.

Distributed by: Litex Industries Inc., P.O. Box 535639, Grand Prairie, TX, 75053; 1-800-527-1292

The device complies with Part 15 of the FCC Rules. Operation is subject to the following two conditions: (1) this device may not cause harmful interference, (2) this device must accept any interference received, including interference that may cause undesired operation.

SAFETY INFORMATION

READ AND SAVE THESE INSTRUCTIONS

- Do not discard fan carton or foam inserts. Should this fan need to be returned to the factory for repairs, it must be shipped in its original packaging to ensure proper protection against damage that might exceed the initial cause for return.
- Make sure all electrical connections comply with local codes, ordinances, the National Electrical Code and ANSI/NFPA 70-1999. Hire a qualified electrician or consult a do-it-yourself wiring handbook if you are unfamiliar with installing electrical wiring.
- Make sure the installation site you choose allows a minimum clearance of 7 ft. from the blades to the floor and at least 30 in. from the end of the blades to any obstruction.
- After you install the fan, make sure all connections are secure to prevent the fan from falling.
- The net weight of this fan including the light kit is: 15.43 lbs.

DANGER

When using an eye bolt, make sure the eye bolt is securely attached to the building structure and can support the full weight of the fan. Failure to do this can result in serious injury or death. The stability of the eye bolt is essential in minimizing wobble and noise in the fan after installation is complete.

To reduce the risk of serious bodily injury, DO NOT use power tools to assemble any part of the fan, including the blades.

If using this fan in a WET location, connect this product to a Ground Fault Circuit Interrupting (GFCI) outlet to reduce the risk of personal injury, electrical shock or death. If one is not provided, contact a qualified electrician for proper installation.

WARNING



DO NOT suspend any fixture by the house wires. Fan must always be mounted directly to an eye bolt which is first attached to the building structure. The power cord alone will not support the weight of the fan. Suspending a fan by the plug will result in the fan falling, with the possibility of personal injury and the danger of electrical shock or fire.

Secure the eye bolt directly to the building structure. The eye bolt and its support must be able to support the moving weight of the fan (at least 35 lbs.).

To avoid personal injury, the use of gloves may be necessary while handling fan parts with sharp edges.

To reduce the risk of fire or electrical shock, do not use the fan with any solid-state speed control device or control fan speed with a full range dimmer switch.

To reduce the risk of fire, electrical shock or personal injury, do not bend the blades when installing or balancing them or cleaning the fan. Do not insert objects between the rotating fan blades.



SAFETY INFORMATION

WARNING

This portable fan has a polarized plug (one blade is wider than the other) as a safety feature to reduce the risk of electric shock. This plug will fit in a polarized outlet only one way. If it does not fit fully in the outlet, reverse the plug. If it still does not fit, contact a qualified electrician. NEVER use with an extension cord unless the plug can be fully inserted. DO NOT alter the plug.

To reduce the risk of personal injury, use *only* parts provided with this fan. The use of parts *OTHER* than those provided with this fan will void the warranty.

To reduce the risk of electric shock, DO NOT use the product if power cord is frayed or broken.

To reduce the risk of burns, fire, electric shock or injury to persons, unplug from outlet before putting on or taking off parts.

As a safety precaution, unplug power supply cord when not in use.

DO NOT use staples or nails to secure wiring/power supply cord from light fixture.

DO NOT place wiring/power supply cord on sharp hooks or nails.

DO NOT hang ornaments or other objects from power supply cord, wire or lights.

DO NOT close doors and/or windows on the light fixture power supply cord as doing so may damage the insulation wire(s).

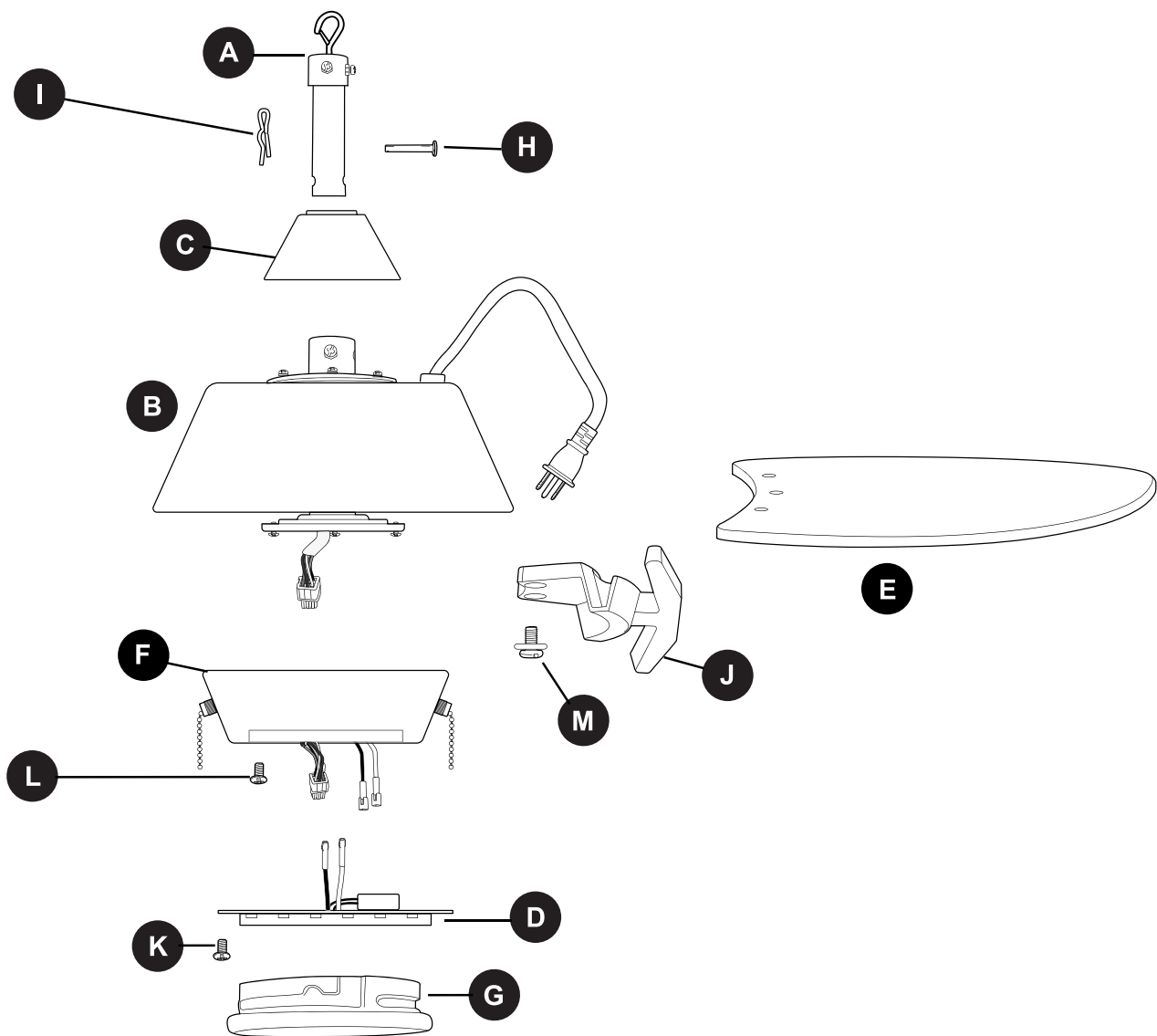
CAUTION

Read all instructions and safety information before installing your new fan. Review the accompanying assembly diagrams.

Once installation is complete, carefully check all screws, bolts and nuts on fan motor assembly to ensure that they are secured.

Do NOT tamper with or attempt to repair LED component. The light source is designed for this specific application and should not be serviced by untrained personnel. If any servicing is required, call our customer service department.

PACKAGE CONTENTS



PART	DESCRIPTION	QUANTITY
A	Downrod	1
B	Motor Housing	1
C	Yoke Cover	1
D	LED Light Kit	1
E	Blade	6
F	Switch Housing	1
G	Shade	1
H	Pin (preassembled)	1

PART	DESCRIPTION	QUANTITY
I	Clip (preassembled)	1
J	Blade Arm	6
K	Switch Housing Screw (preassembled)	3
L	Motor Plate Screw (preassembled)	3
M	Motor Screw/Lock Washer (preassembled)	12 + 1 extra

⚠ IMPORTANT REMINDER: You must use the parts provided with this fan for proper installation and safety.

HARDWARE CONTENTS (shown actual size)

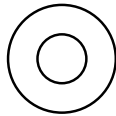
AA



Blade
Screw

Qty. 18
+ 1 extra

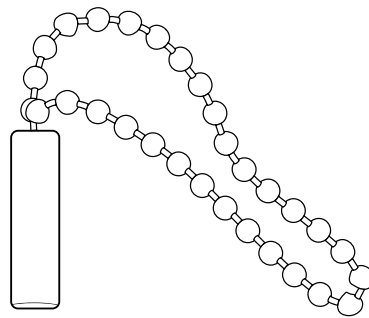
BB



Rubber
Blade
Washer

Qty. 18
+ 1 extra

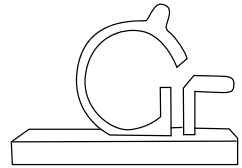
CC



Pull Chain
Extension

Qty. 2

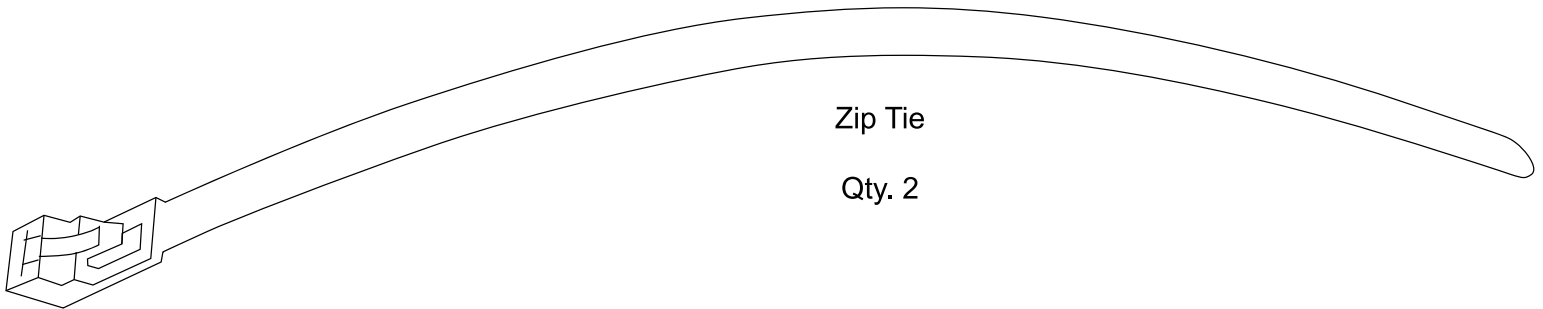
DD



Clamp

Qty. 6

EE



Zip Tie

Qty. 2

PREPARATION

Before beginning assembly of product, make sure all parts are present. Place motor on carpet or on foam to avoid damage to finish. Compare parts with package contents list and hardware contents list. If any part is missing or damaged, do not attempt to install, operate or assemble the product.

Estimated Assembly Time: 60 minutes.

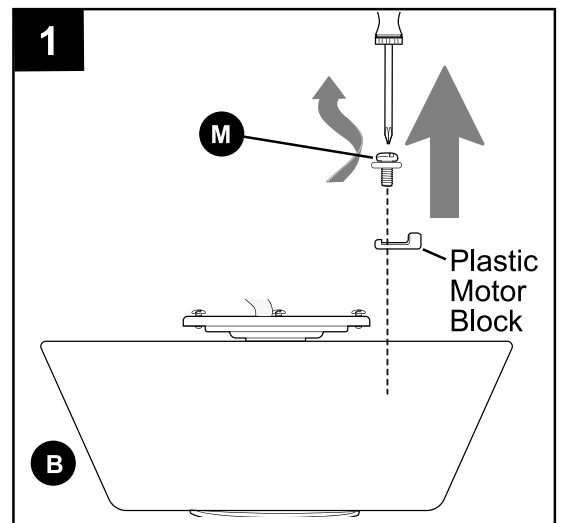
Tools Required for Assembly (not included): Phillips Screwdriver, Pliers, Safety Glasses, Stepladder.

Helpful Tools (not included): AC Tester Light, Tape Measure.

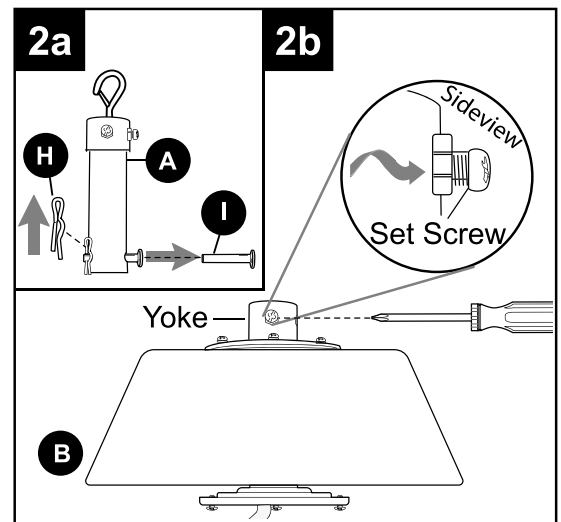
INITIAL INSTALLATION

1. Remove preassembled motor screws/lock washers (M) from underside of motor housing (B). If there are plastic motor blocks installed with the motor screws/lock washers (M), discard the plastic motor blocks.

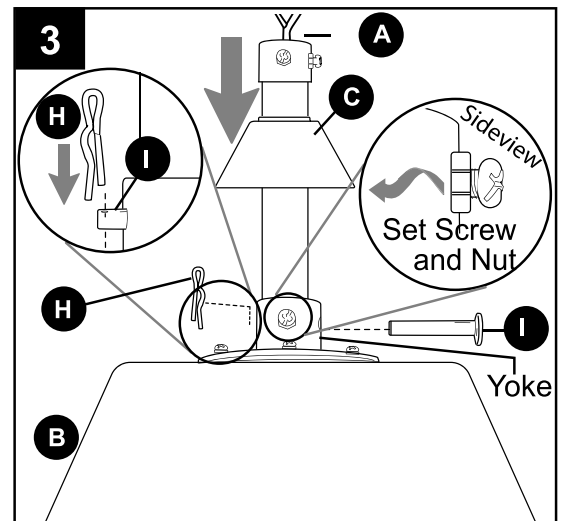
Note: Make sure to keep loose hardware separate to avoid confusion during installation.



- 2a. Remove pin (H) and clip (I) from downrod (A).
- 2b. Partially loosen preassembled set screws and nut in motor housing yoke at top of motor housing (B).



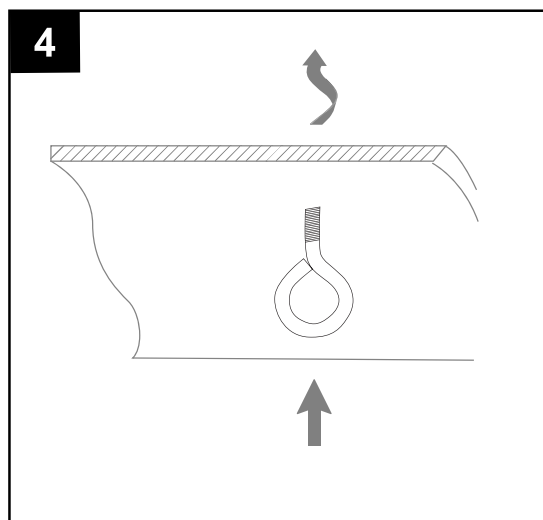
3. Insert downrod (A) through yoke cover (C). Slip downrod (A) into motor housing yoke, align holes and re-install pin (H) and clip (I). Tighten set screws in motor housing yoke and then tighten preassembled nut on one of the set screws. Then, slide yoke cover (C) down until it rests on top of motor housing (B).



INITIAL INSTALLATION

- Secure an eye bolt (not included) to ceiling of building structure.

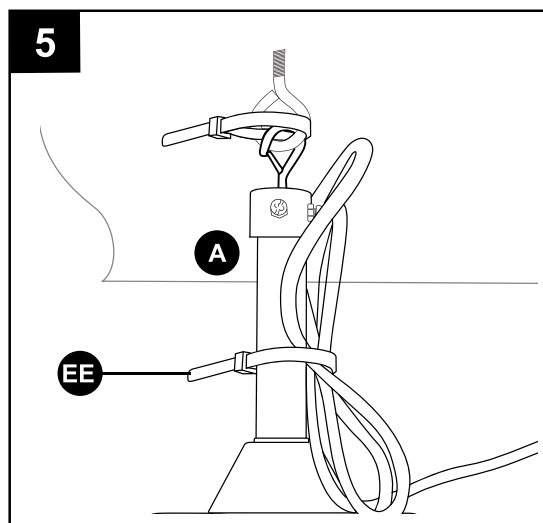
***NOTE:** It is very important you use the proper hardware when installing the eye bolt as this will support the fan.



- Clip downrod (A) to secured eye bolt. Secure downrod (A) to eye bolt using one zip tie (EE). Then check the length of the power cord from the outlet to the fan (do NOT plug in the fan). Using one zip tie (EE) secure power cord slack to the side of the downrod.

Hardware Used

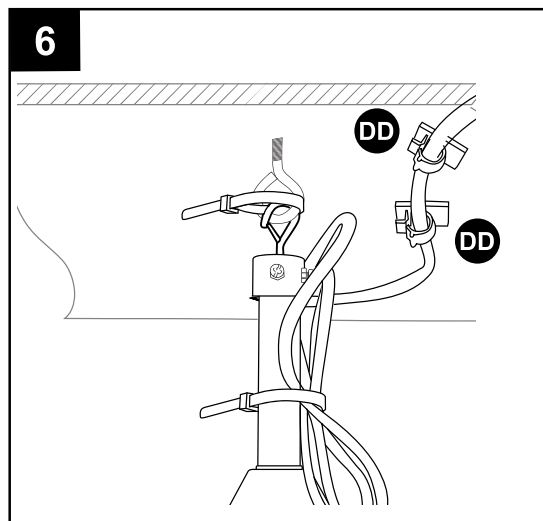
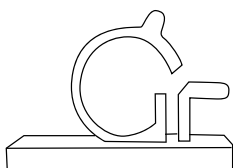
EE Zip Tie x 2



- Remove liner from back of clamp (DD). Place clamps (DD) alongside the path of the power cord and insert power cord into clamps (DD), making sure the cord does not hang in the way of the fan.

Hardware Used

DD Clamp x 6



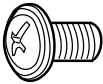
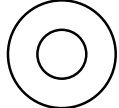
FINAL INSTALLATION

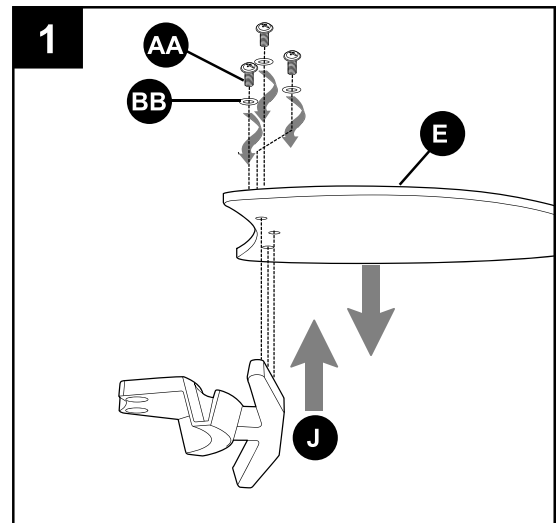
1. **⚠ DANGER:** To reduce the risk of serious bodily injury, DO NOT use power tools to assemble the blades (E). If screws are overtightened, blades (E) may crack and break.

Partially insert three blade screws (AA) along with three rubber blade washers (BB) into holes in blade (E) (labeled THIS SIDE UP) to attach blade arm (J) to blade (E). Then, tighten each blade screw (AA) starting with the one in the middle.

Repeat Step 2 for remaining blades (E) and blade arms (J).

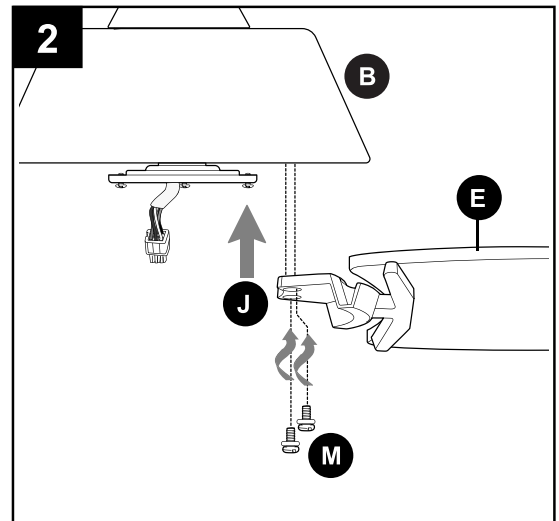
Hardware Used

AA	Blade Screw		x 18
BB	Rubber Blade Washer		x 18

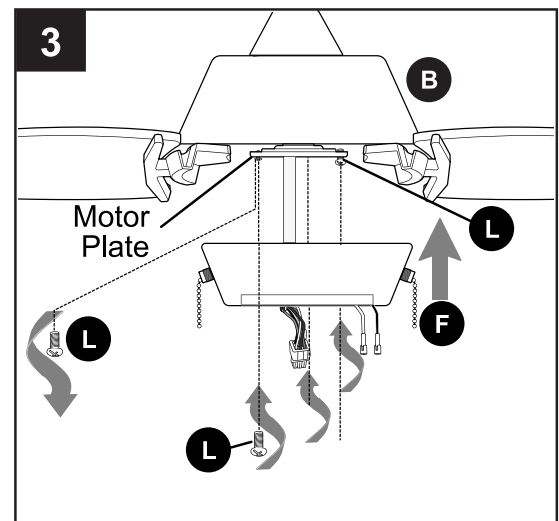


2. Attach blade arms (J) to the bottom of motor housing (B) with motor screws/lock washers (M) previously removed (Step 1, page 6). Tighten motor screws/lock washers (M) securely.

NOTE: Make sure to completely secure each blade arm (J) before proceeding to the next.

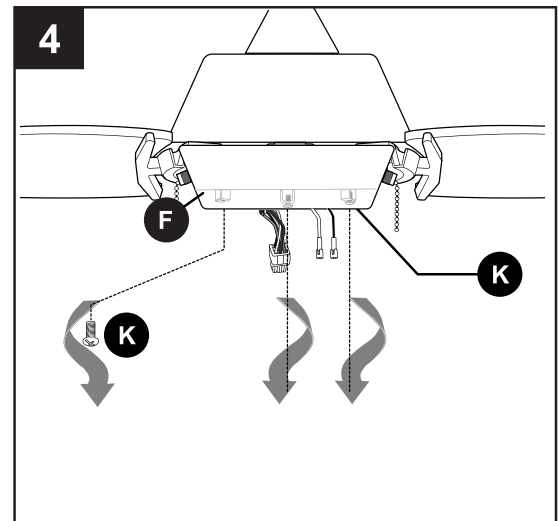


3. Remove one motor plate screw (L) from motor plate preassembled on the underside of the motor housing (B) and partially loosen the other two motor plate screws (L). Align slotted holes in switch housing (F) with loosened motor plate screws (L), allowing mox connections from motor housing (B) to come through hole in switch housing (F). Twist switch housing (F) to lock. Re-insert the motor plate screw (L) that was removed and securely tighten all three motor plate screws (L).

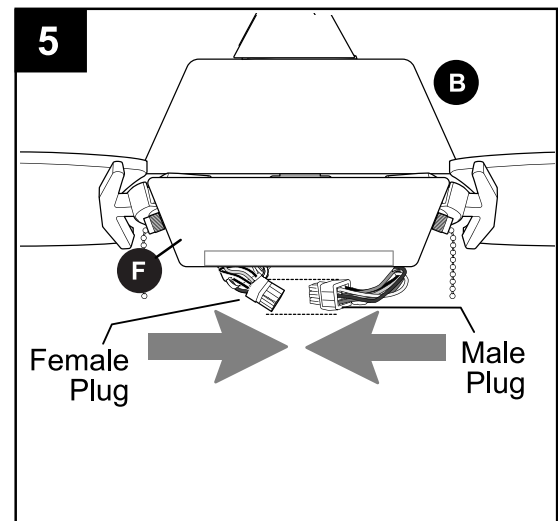


FINAL INSTALLATION

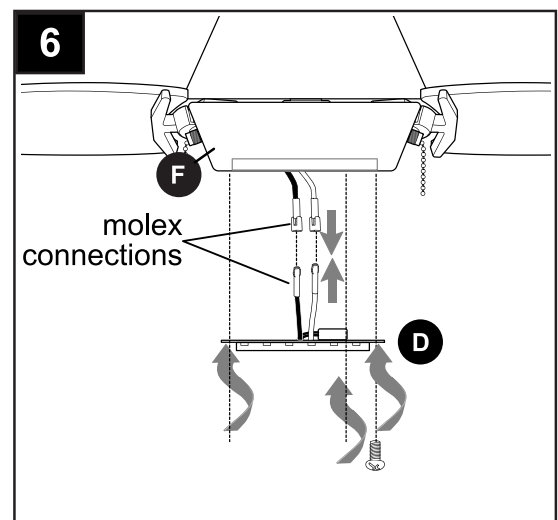
4. Remove two switch housing screws (K) from underside of switch housing (F) and partially loosen the other switch housing screw (K).



5. Connect male plug from motor housing (B) to female plug from switch housing (F), matching up the colors on the male plug with the colors on the female plug for correct fit. Make sure plugs are connected completely.

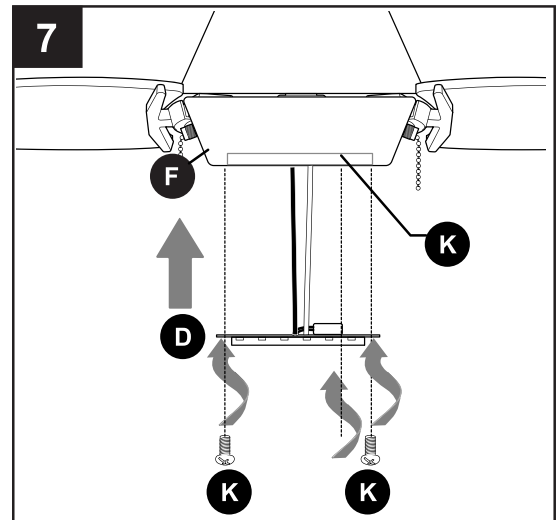


6. Connect WHITE molex wire from LED light kit (D) to WHITE molex wire from switch housing (F). Connect BLUE molex wire from LED light kit (D) to BLACK (or BLUE) molex wire from switch housing (F). Make sure molex wire connections snap together securely.

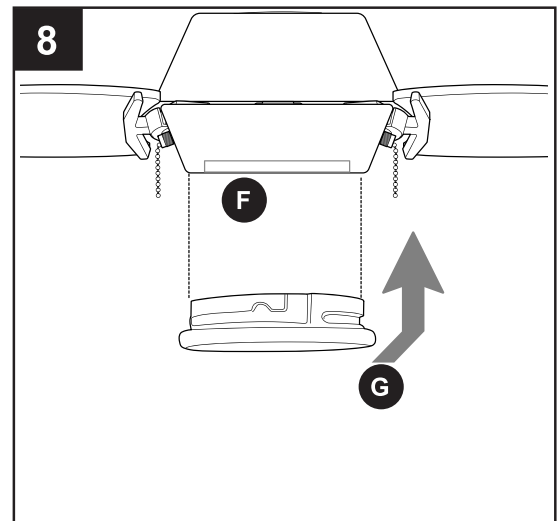


FINAL INSTALLATION

7. Carefully arrange wires inside switch housing (F). Align hole in edge of LED light kit (D) with loosened switch housing screw (K) in switch housing (F). Re-insert the other two switch housing screws (K) previously removed. Tighten all three switch housing screws (K) securely.



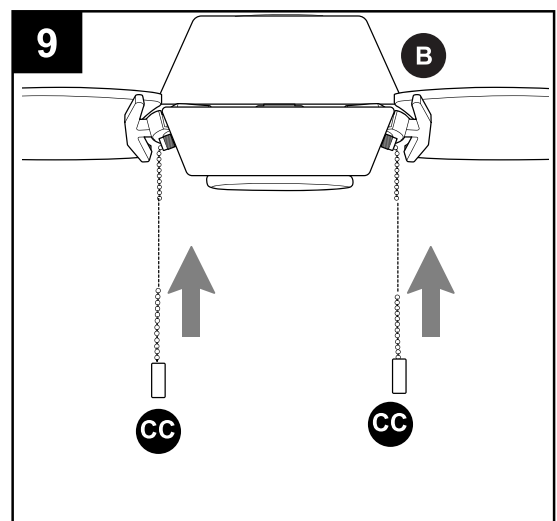
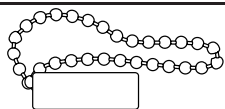
8. Align slots on shade (G) with protrusions on the inside of the switch housing (F). Turn shade (G) to the right (clockwise) until it no longer turns.
NOTE: Pull down gently on the shade (G) to make sure that it is secured completely.



9. Attach pull chain extensions (CC) or custom pull chain extensions (not included) to fan and light pull chains.

Hardware Used

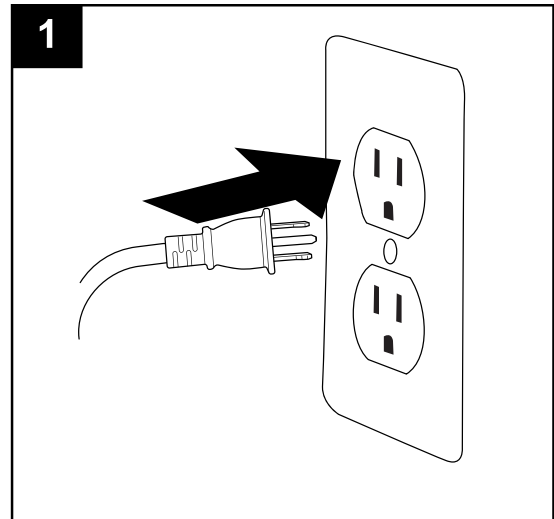
CC Pull Chain Extension x 2



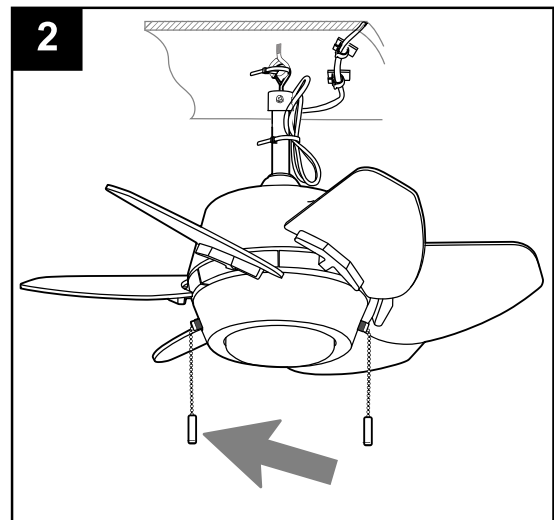
OPERATING INSTRUCTIONS

1. Plug power cord into outlet.

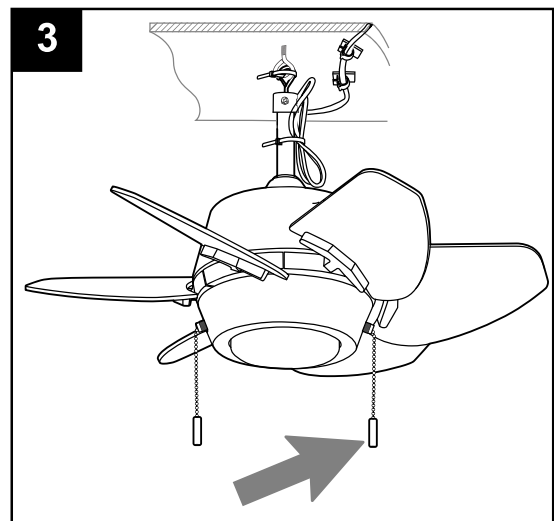
DANGER: If using this fan in a WET or DAMP location, connect this product to a Ground Fault Circuit Interrupting (GFCI) outlet to reduce the risk of personal injury, electrical shock or death. If one is not provided, contact a qualified electrician for proper installation.



2. The fan pull chain labeled FAN has four positions to control fan speed. One pull is HIGH, two is MEDIUM, three is LOW and four turns the fan OFF.



3. The light pull chain labeled LIGHT is used to turn the light ON or OFF.



TROUBLESHOOTING

⚠ WARNING: Before beginning work, unplug fan to avoid electrical shock.

PROBLEM	POSSIBLE CAUSE	CORRECTIVE ACTION
Fan does not move.	1.. Power is off or fuse is blown. 2. Plugs in switch housing not connected properly.	1. Turn power on or check fuse. Make sure fan is plugged in correctly. 2. Check that male and female plugs in switch housing are connected properly according to instructions on page 10.
Noisy operation.	1. Blades are loose. 2. Cracked blade. 3. Fan is new.	1. Tighten all blade screws. 2. Replace blade. 3. Allow fan a "break in" period of a few days, especially when running the fan at Medium and High speeds.
Excessive wobbling.	1. Blades are loose. 2. Blade arms incorrectly attached. 3. Unbalanced blades. 4. Fan not securely mounted. 5. Fan too close to vaulted ceiling. 6. Set screw(s) on motor housing yoke is (are) not tightened properly.	1. Tighten all blade screws. 2. Re-install blade arms. 3. Switch one blade with a blade from the opposite side. 4. Turn power off. Make sure eye bolt is secured to structure. 5. Use a longer downrod or move fan to another location. 6. Tighten yoke set screw(s) securely.
Fan operates but light fails.	1. Wall switch to fan is off. 2. Wires in LED light kit not wired correctly.	1. Make sure that wall switch to fan is on. 2. Check that molex connections in LED light kit are connected properly according to instructions on page 10.

NOTE: A small amount of "wobble" is normal and should not be considered a defect.

CARE AND MAINTENANCE

At least twice each year, tighten the eye bolt holding the downrod (A), and then tighten all screws on fan. Clean motor housing (B) with only a soft brush or lint-free cloth to avoid scratching the finish. Clean blades (E) with a lint-free cloth. You may occasionally apply a light coat of furniture polish to wood blades for added protection.

IMPORTANT: Unplug fan before beginning any maintenance. Do not use water or a damp cloth to clean the ceiling fan.

Total wattage for this fan is 12 watts; do not attempt to replace the LEDs.

LIMITED LIFETIME WARRANTY

The distributor warrants this fan to be free from defects in workmanship and materials present at time of shipment from the factory for Lifetime limited from the date of purchase. This warranty applies only to the original purchaser. The distributor agrees to correct any defect at no charge or, at our option, replace the ceiling fan with a comparable or superior model.

To obtain warranty service, present a copy of your sales receipt as proof of purchase. All cost of removal and reinstallation are the express responsibility of the purchaser. Any damage to the ceiling fan by accident, misuse or improper installation, or by using parts not produced by the manufacturer of this fan or affixing accessories not produced by the manufacturer of this fan, are the purchaser's own responsibility. The distributor assumes no responsibility whatsoever for fan installation during the limited lifetime warranty. Any service performed by an unauthorized person will render the warranty invalid.

Due to varying climatic conditions, this warranty does not cover changes in brass finish, rusting, pitting, tarnishing, corroding or peeling. Brass finish fans maintain their beauty when protected from varying weather conditions. Any glass provided with this fan is not covered by the warranty.

Any replacement of defective parts for the ceiling fan must be reported within the first year from the date of purchase. For the balance of the warranty, call our customer service department (at **1-888-251-1003**) for return authorization and shipping instructions so that we may repair or replace the ceiling fan. Any fan or parts returned improperly packaged is/are the sole responsibility of the purchaser. There is no further express warranty. The distributor disclaims any and all implied warranties. The duration of any implied warranty which cannot be disclaimed is limited to the limited lifetime period as specified in our warranty. The distributor shall not be liable for incidental, consequential or special damages arising at or in connection with product use or performance except as may otherwise be accorded by law. This warranty gives you specific legal rights and you may also have other rights which vary from state to state. This warranty supersedes all prior warranties.

REPLACEMENT PARTS LIST

For replacement parts, call our customer service department at **1-888-251-1003**, 8 a.m. - 8 p.m., EST, Monday - Sunday. You could also contact us at partsplus@lowes.com or visit www.lowespartsplus.com

PART	DESCRIPTION	PART #
A	Downrod	2889555-A
E	Blade	2889555-E
J	Blade Arm	2889555-J

