

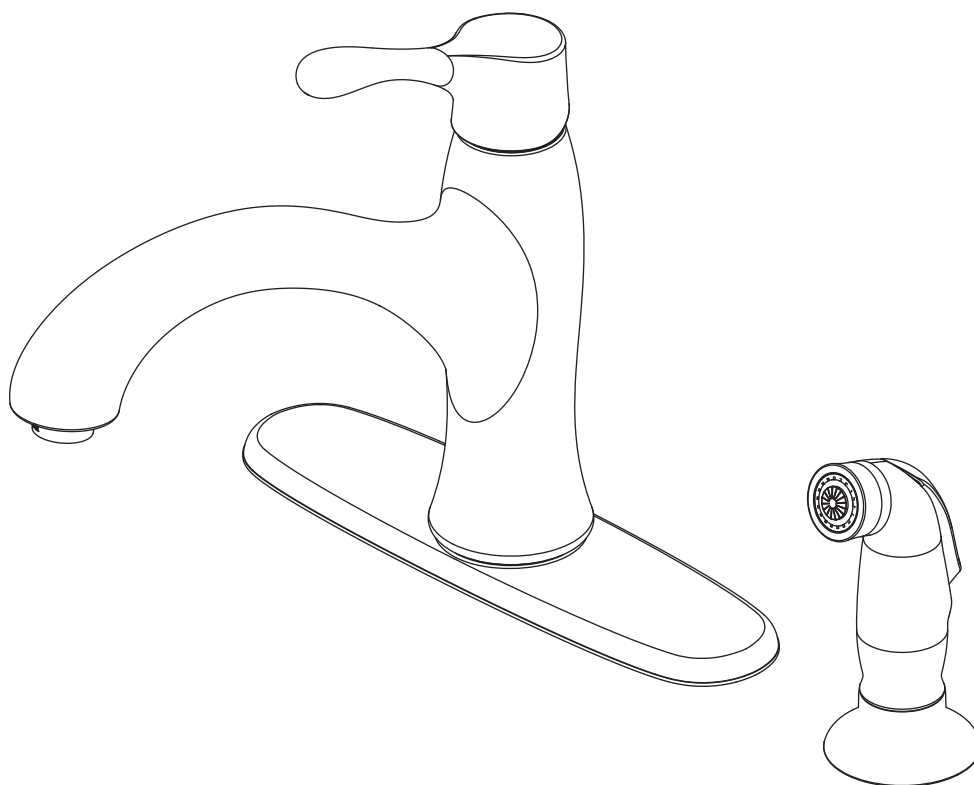


AquaSource® is a registered trademark of LF, LLC. All Rights Reserved.

ITEM #0127039

SINGLE-HANDLE KITCHEN FAUCET

MODEL #67355-1001



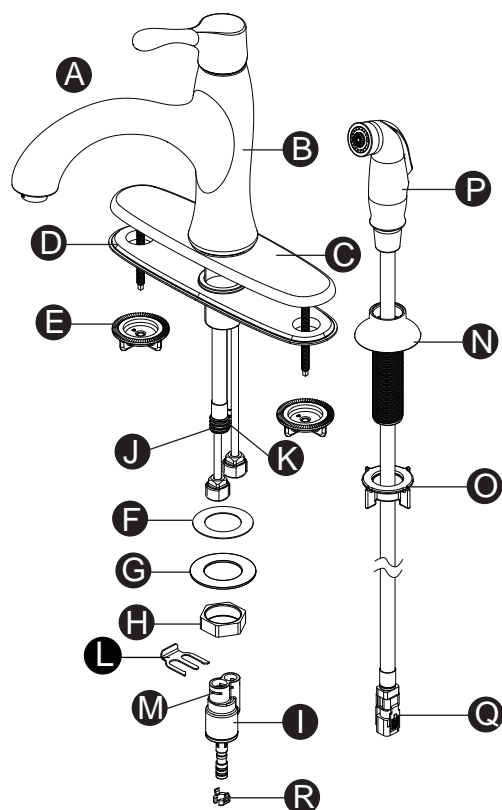
ATTACH YOUR RECEIPT HERE

Serial Number _____ **Purchase Date** _____



Questions, problems, missing parts? Before returning to your retailer, call our customer service department at 1-866-417-7564, 8 a.m. - 8 p.m., EST, Monday - Friday.

PACKAGE CONTENTS



| PART | DESCRIPTION | QUANTITY |
|------|---|----------|
| A | Faucet | 1 |
| B | Spout (Preassembled to Faucet (A)) | 1 |
| C | Escutcheon (Preassembled to Faucet (A)) | 1 |
| D | Base Plate (Preassembled to Faucet (A)) | 1 |
| E | Mounting Nut (Preassembled to Faucet (A)) | 2 |
| F | Rubber Washer (Preassembled to Faucet (A)) | 1 |
| G | Metal Washer (Preassembled to Faucet (A)) | 1 |
| H | Nut (Preassembled to Faucet (A)) | 1 |
| I | Diverter Connector | 1 |
| J | Hose (Preassembled to Faucet (A)) | 1 |
| K | Tube (Preassembled to Faucet (A)) | 1 |
| L | Clip | 1 |
| M | Diverter Holes (Preassembled to Diverter Connector (I)) | 1 |
| N | Hose Guide | 1 |
| O | Lock Nut (Preassembled to Hose Guide (N)) | 1 |
| P | Side Spray | 1 |
| Q | Hose Connector (Preassembled to Spray Hose (P)) | 1 |
| R | Block (Preassembled to Diverter Connector (I)) | 1 |

SAFETY INFORMATION

Please read and understand this entire manual before attempting to assemble, operate or install the product. If you have any questions regarding the product, please call customer service at 1-866-417-7564, 8 a.m. - 8 p.m., EST, Monday - Friday.

- Follow the installation instructions carefully. Proper installation is the installer's responsibility.
- Failure to follow correct installation procedures can result in the faucet being loose, which can result in serious injury.
- Check local building codes before beginning installation to ensure compliance.

PREPARATION

Before beginning the assembly of product, make sure all parts are present. Compare parts with package content list and diagram above. If any part is missing or damaged, do not attempt to assemble the product. Contact customer service for replacement parts.

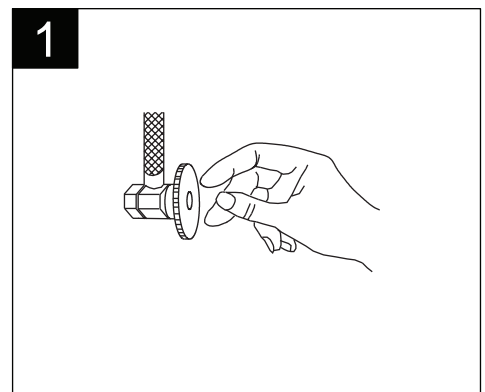
Estimated Assembly Time: 45 minutes, Including Removal of the Old Faucet

Tools Required for Assembly (not included): Adjustable Wrench, Phillips Screwdriver, Putty/Silicone, Allen Wrench

Helpful Tools (not included): Basin Wrench, Water Supply Lines

ASSEMBLY INSTRUCTIONS

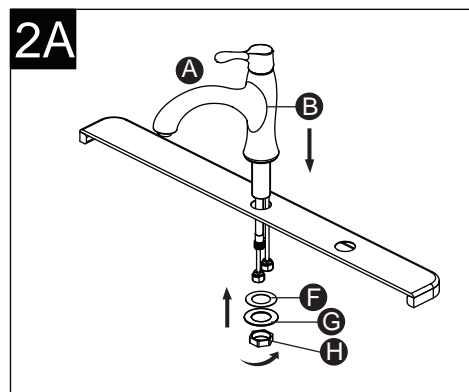
1. Shut off water supplies. Remove old faucet.



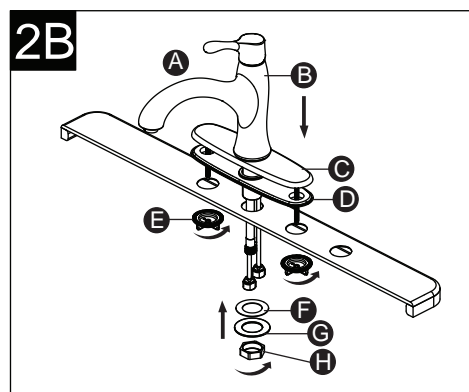
ASSEMBLY INSTRUCTIONS

2. To install this faucet in a single hole without the deckplate please follow Step 2A and then proceed to Step 3. To install this with the deckplate please follow step 2B and then proceed to step 3.

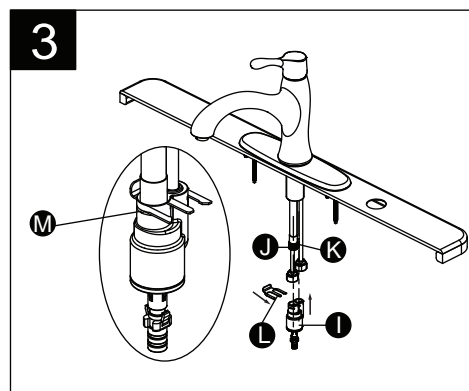
2A. Place spout (B) through mounting hole of sink (not included). secure spout (B) with rubber washer (F), metal washer (G) and nut (H).



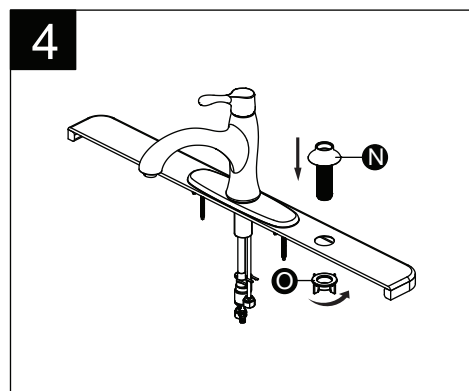
2B. Place spout (B) through escutcheon (C), base plate (D) and mounting hole of sink (not included). Secure escutcheon (C) with mounting nuts (E) and secure spout (B) with rubber washer (F), metal washer (G) and nut (H).



3. Push diverter connector (I) all the way up until completely seated onto hose (J) and tube (K). Slide clip (L) into diverter holes (M), to secure unit.

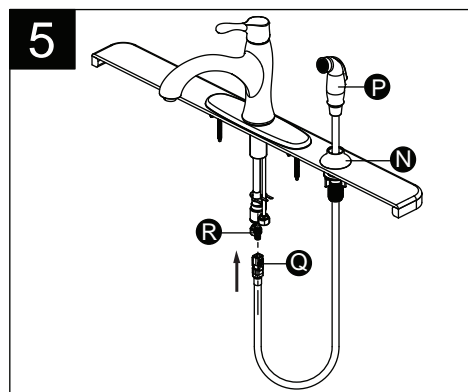


4. Mount hose guide (N) in far right hole of sink. Secure hose guide (N) using lock nut (O). Hand tighten.

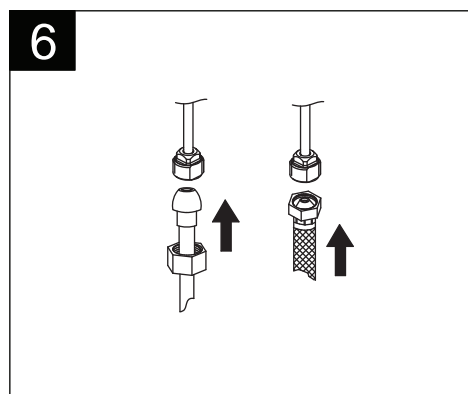


ASSEMBLY INSTRUCTIONS

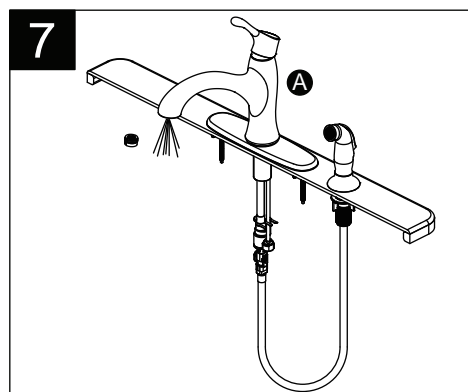
5. Insert spray hose (P) down through hose guide (N) and sink. From underneath the sink, push hose connector (Q) firmly upward and snap onto block (R). Pull down moderately to ensure the connection has been made. If it is necessary to remove the hose, press on the tabs and pull hose connector (Q) down.



6. Connect 1/2 in. IPS faucet connector or coupling nuts (not included) with 3/8 in. O.D. ball-nose risers (not included) to water supplies using wrenches (not included).
Note: Refer to local plumbing codes for permissible types of water supply connectors.



7. After installation is completed, remove aerator on faucet (A). Turn on water supply and allow both hot and cold water to run for at least one minute each. While water is running, check for leaks. Replace aerator.



CARE AND MAINTENANCE

- Clean carefully by gently wiping with a grit-free damp cloth. Use only mild soap with water.
Never use acids, harsh chemicals or abrasive detergents to clean surface.

TROUBLESHOOTING

If you have any questions regarding the product, please call our customer service at 1-866-417-7564, 8 a.m. - 8 p.m., EST, Monday - Friday.

| PROBLEM | POSSIBLE CAUSE | CORRECTIVE ACTION |
|-----------------------------|-------------------------------|--|
| Leak from under handle | Damaged cartridge | Remove handle. Replace cartridge. |
| Inconsistent flow pattern | Aerator is dirty or misfitted | Unscrew the aerator to check rubber washer or replace the aerator. |
| Leak from the spout/aerator | Damaged cartridge | Remove handle. Replace cartridge. |

LIFETIME LIMITED WARRANTY

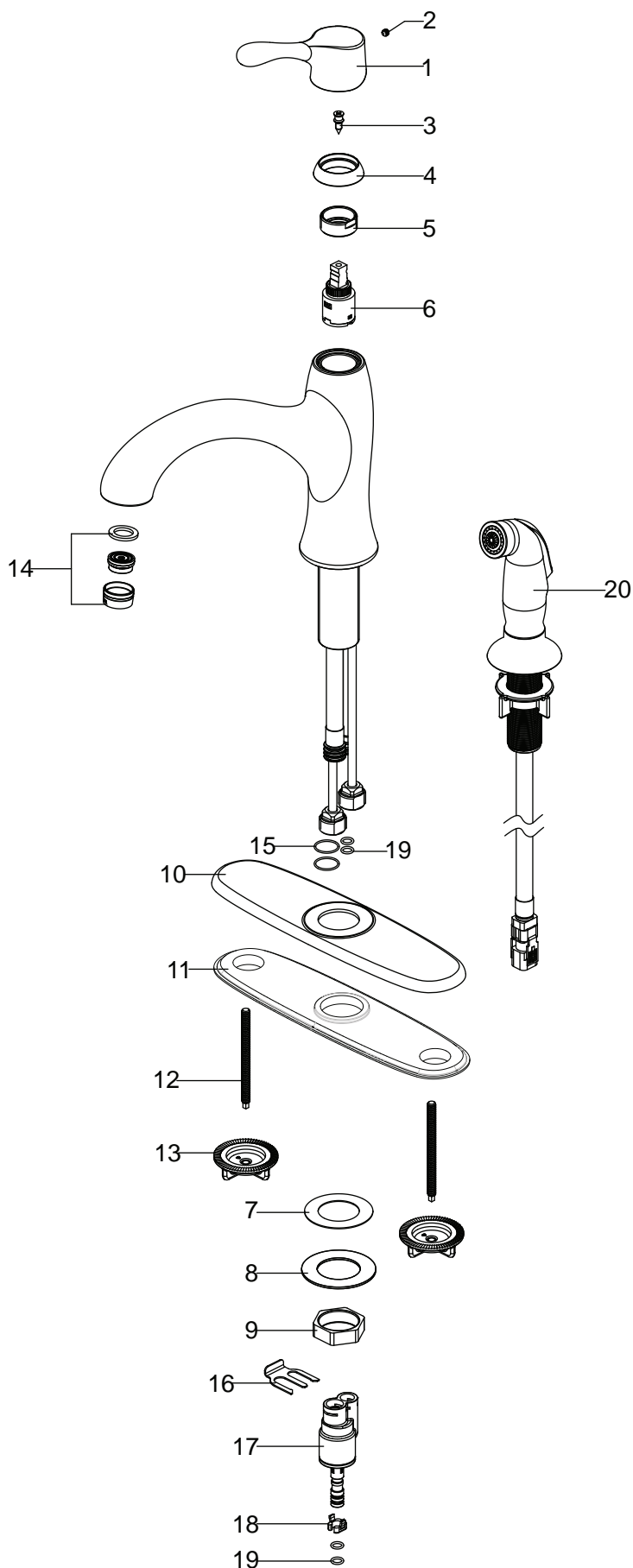
This faucet has been manufactured under the highest standard of workmanship. All parts of this faucet are warranted to be free from leaks or drips during domestic use for as long as the original purchaser owns this product. THIS EXCLUDES INDUSTRIAL, COMMERCIAL, OR BUSINESS USE. The manufacturer will replace FREE OF CHARGE, under the warranty conditions the entire unit or any part (at our option) which proves defective in material and/or workmanship under normal installation, use and service. This warranty is limited to defective parts as stated. All costs of removal and installation of the faucet, including the replacement of warranty parts are the responsibility of the purchaser. The manufacturer shall not be liable for incidental, consequential or special damages arising at or in connection with product use or performance except as may otherwise be accorded by law. This warranty gives you specific legal rights, and you may also have other rights which may vary from state to state. Any damage to this faucet as a result of misuse, abuse, neglect, accident, improper installation, or any use violating instructions furnished by us, WILL VOID THIS WARRANTY. When requesting warranty service, you will need to present a copy of your sales receipt as proof of purchase. To obtain warranty service, call our customer service department at 1-866-417-7564.

REPLACEMENT PARTS LIST

For replacement parts, call our customer service department at 1-866-417-7564, 8 a.m. - 8 p.m., EST, Monday - Friday.

| PART | DESCRIPTION | PART # |
|------|--------------------|----------|
| 1 | Handle | RP13210* |
| 2 | Set Screw | RP50002 |
| 3 | Connect | RP50095 |
| 4 | Cap | RP80237* |
| 5 | Bonnet | RP70224 |
| 6 | Cartridge | RP20031 |
| 7 | Rubber Washer | RP64131 |
| 8 | Metal Washer | RP64146 |
| 9 | Nut | RP56063 |
| 10 | Escutcheon | RP80276* |
| 11 | Base Plate | RP80277 |
| 12 | Bolt | RP50071 |
| 13 | Mounting Nut | RP56036 |
| 14 | Aerator | RP30087* |
| 15 | O-Ring | RP60087 |
| 16 | Clip | RP70292 |
| 17 | Diverter Connector | RP70293 |
| 18 | Block | RP70005 |
| 19 | O-Ring | RP60002 |
| 20 | Side Spray | RP36054* |

*Available in Polished Chrome Finish



Printed in China