



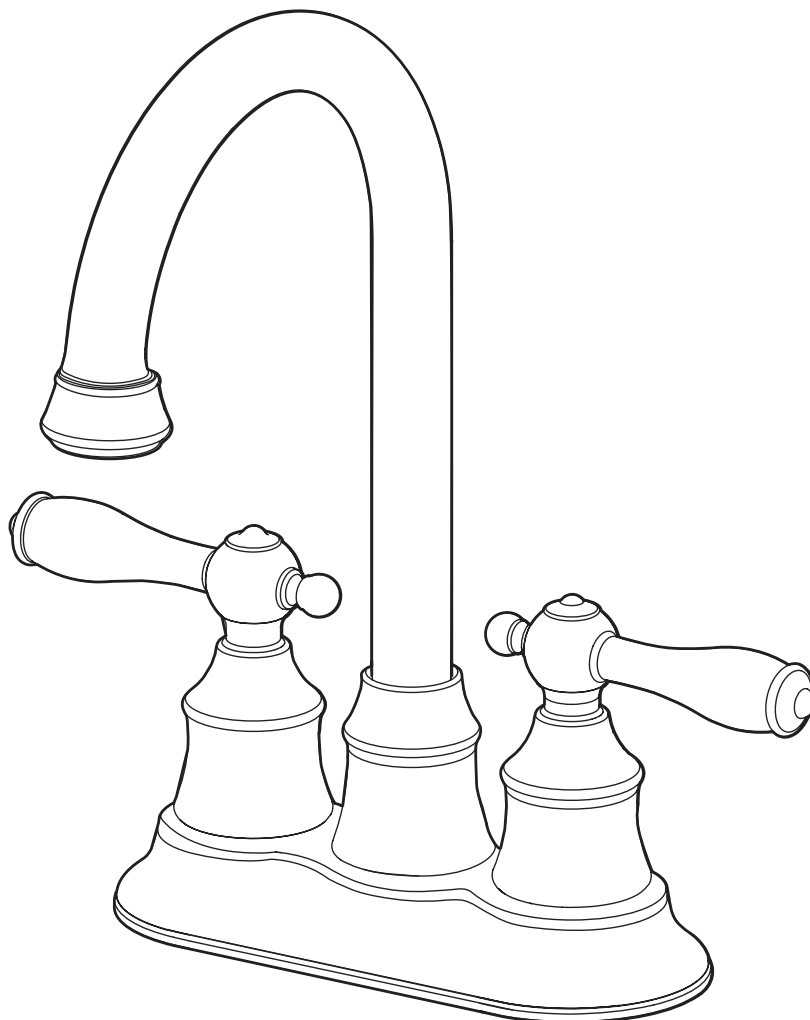
AquaSource® is a registered trademark of LF, LLC. All Rights Reserved.

ITEM #0154642
0335793

BAR FAUCET

MODEL #67459-0001
67459-0004

Français / Español p. 7



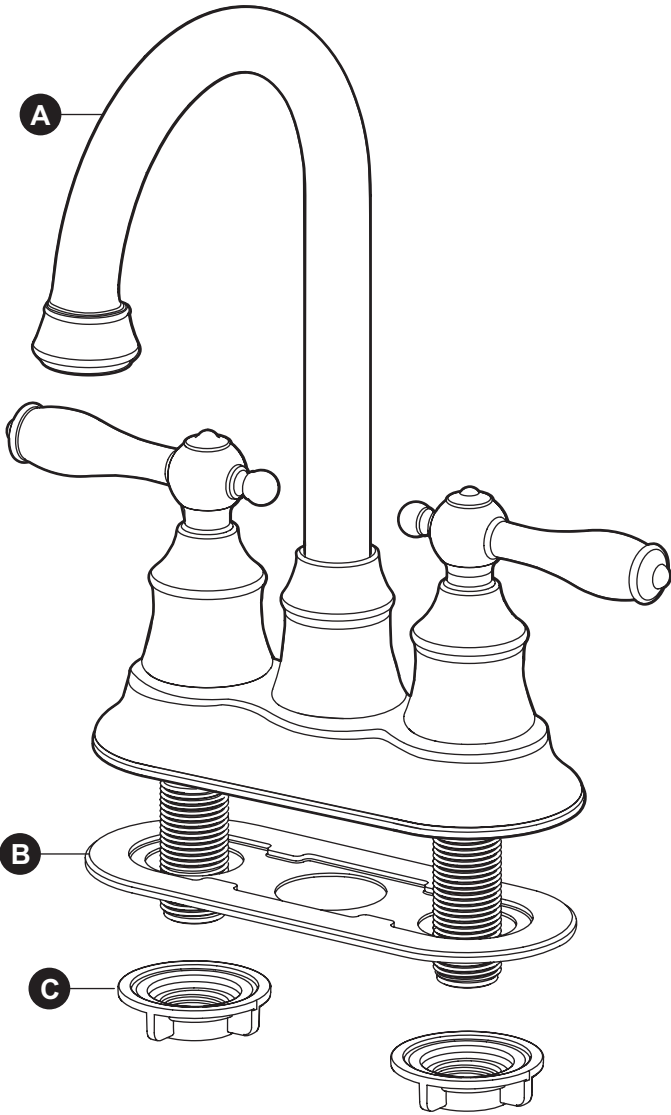
ATTACH YOUR RECEIPT HERE

Serial Number _____ Purchase Date _____



Questions, problems, missing parts? Before returning to your retailer, call our customer service department at 1-866-417-7564, 8 a.m. - 8 p.m., EST, Monday - Friday.

PACKAGE CONTENTS



PART		DESCRIPTION	QUANTITY
A	Faucet		1
B	Base Plate (Preassembled to Faucet (A))		1
C	Mounting Nut (Preassembled to Faucet (A))		2



SAFETY INFORMATION

Please read and understand this entire manual before attempting to assemble, operate, or install the product.

WARNING

- Follow the installation instructions carefully. Proper installation is the installer's responsibility.
- Failure to follow the correct installation procedures can result in the faucet being loose, which can result in serious injury.

CAUTION

- Check local building codes before you begin the installation to ensure compliance.

PREPARATION

Before beginning the assembly of this product, make sure all parts are present. Compare parts with the package content list and diagram above. If any part is missing or damaged, do not attempt to assemble the product. Contact customer service for replacement parts.

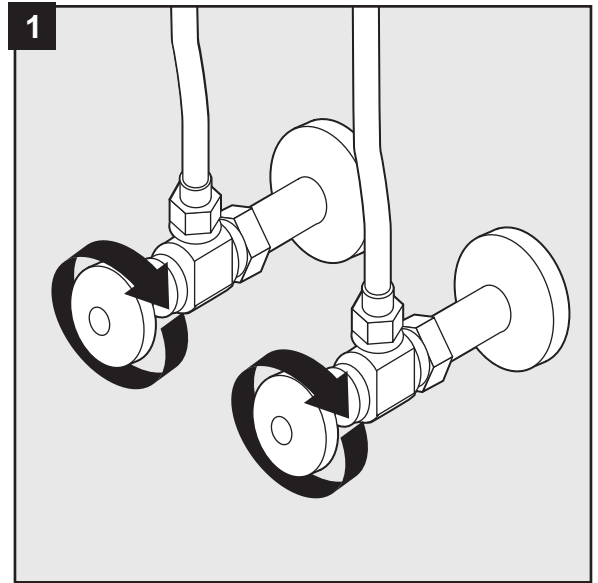
Estimated Assembly Time: 35 minutes (including removal of old faucet)

Tools Required for Assembly (not included): Adjustable Wrench, Phillips Screwdriver, Silicone Sealant, Allen Wrench

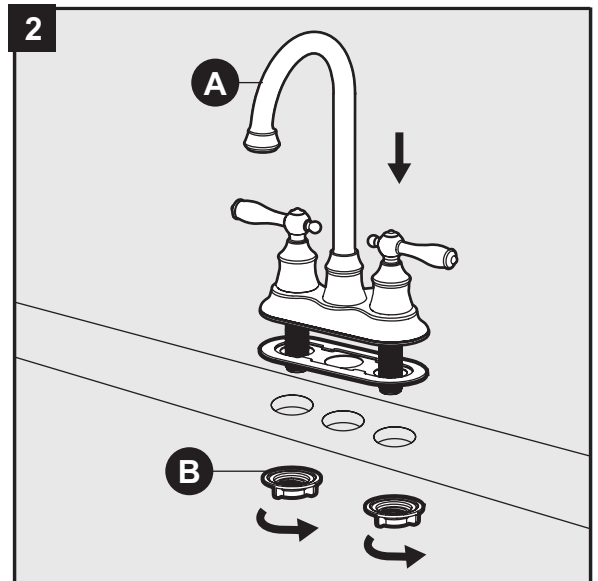
Helpful Tools (not included): Basin Wrench, Water Supply Lines

ASSEMBLY INSTRUCTIONS

1. Shut off the water supply and remove the old faucet.

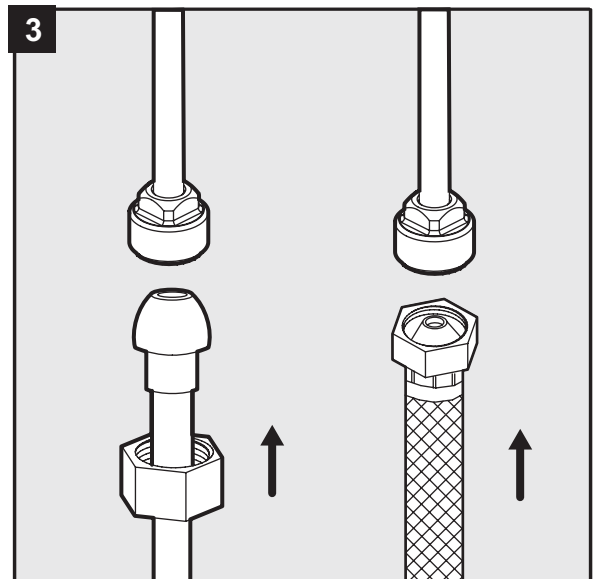


2. Install the faucet:
 - a. Remove the preassembled mounting nuts (B) from the faucet (A) and place the faucet (A) in position on the sink.
 - b. From under the sink, thread the mounting nuts (B) onto the shank.
 - c. Tighten the mounting nuts (B).



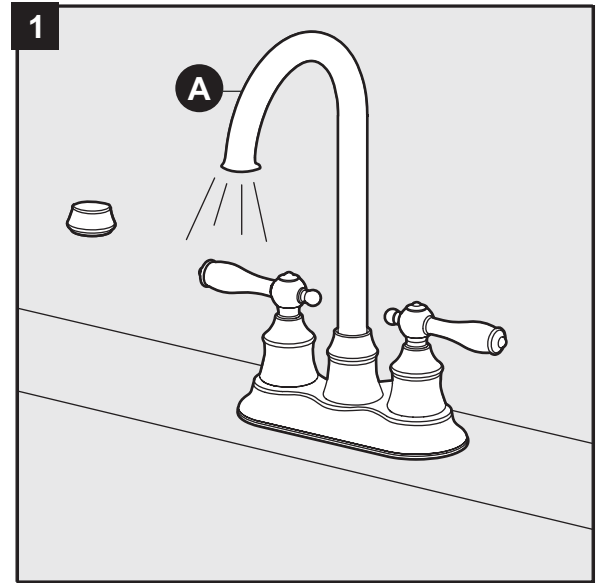
3. Connect a 1/2 in. IPS faucet connector or coupling nuts (not included) with 3/8 in. O.D. ball-nose risers (not included) to the water supplies underneath the sink using wrenches (not included).

Note: Refer to the local plumbing codes for permissible types of water supply connectors.



OPERATION INSTRUCTIONS

1. After the installation is complete:
 - a. Remove the aerator on the faucet (A).
 - b. Turn on the water supply and allow both hot and cold water to run for at least one minute each.
 - c. While the water is running, check for leaks.
 - d. Replace the aerator.



CARE AND MAINTENANCE

- Clean carefully by gently wiping with a grit-free damp cloth.
- Use only mild soap with water.
- Never use acids, harsh chemicals, or abrasive detergents to clean the faucet surface.

TROUBLESHOOTING

PROBLEM	POSSIBLE CAUSE	CORRECTIVE ACTION
There is a leak under the handle.	The cartridge is damaged.	Remove the handle and replace the cartridge.
There is an inconsistent water-flow pattern.	The aerator is dirty or does not fit correctly on the faucet.	Unscrew the aerator and check the rubber washer or replace the aerator.
The spout/aerator has a leak.	The cartridge is damaged.	Remove the handle and replace the cartridge.

WARRANTY

This faucet has been manufactured under the highest standard of workmanship. All parts of this faucet are warranted to be free from leaks or drips during domestic use for as long as the original purchaser owns this product. **THIS EXCLUDES INDUSTRIAL, COMMERCIAL, OR BUSINESS USE.** The manufacturer will replace **FREE OF CHARGE**, under the warranty conditions the entire unit or any part (at our option) which proves defective in material and/or workmanship under normal installation, use and service. This warranty is limited to defective parts as stated. All costs of removal and installation of the faucet, including the replacement of warranty parts are the responsibility of the purchaser. The manufacturer shall not be liable for incidental, consequential or special damages arising at or in connection with product use or performance except as may otherwise be accorded by law. This warranty gives you specific legal rights, and you may also have other rights which may vary from state to state. Any damage to this faucet as a result of misuse, abuse, neglect, accident, improper installation, or any use violating instructions furnished by us, **WILL VOID THIS WARRANTY.** When requesting warranty service, you will need to present a copy of your sales receipt as proof of purchase. To obtain warranty service, call our customer service department at 1-866-417-7564.

REPLACEMENT PARTS LIST

For replacement parts, call our customer service department at 1-866-417-7564, 8 a.m. - 8 p.m., EST, Monday - Friday.

PART	DESCRIPTION	QUANTITY
1	Index	RP10003*
2	Set Screw	RP50005
3	Handle	RP13201*
4	Inverter	RP64044
5	Bonnet	RP70193
6	Washer	RP64123
7	Cartridge H	RP20013
8	Cartridge C	RP20014
9	Mounting Nut	RP56001
10	Aerator	RP30026*
11	Wearable Ring	RP70077
12	Clip	RP70106
13	O-Ring	RP60008

* Available in Polished Chrome Finish and Brushed Nickel Finish.

