

# FRAMED MIRROR

Colors/Finishes: Matte Black(MB),White(WT),Brushed Gold(BG)

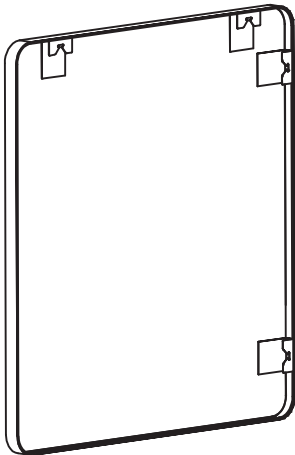
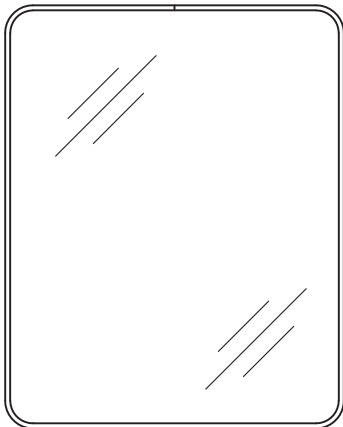
Nominal Dimension:	24W*1.5D*32H inches	24W*1.5D*36H inches
	30W*1.5D*36H inches	36W*1.5D*36H inches
	40W*1.5D*32H inches	48W*1.5D*36H inches
	55W*1.5D*32H inches	60W*1.5D*28H inches

## FEATURES:

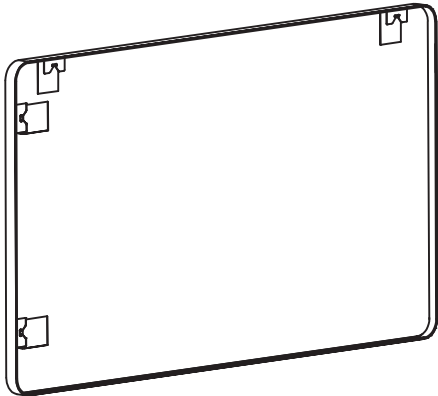
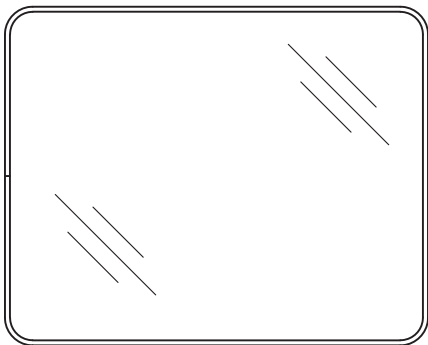
- Durable aluminum frame
- Modern sloping edge design
- Mirror hangs vertically or horizontally
- Long lasting color finish

## PRODUCT DIAGRAMS:

Vertical Assembly



Horizontal Assembly



All dimensions and specifications are nominal and may vary. Use actual products for accuracy in critical situations.

# Mirror Installation

## SUGGESTED TOOLS AND MATERIALS



Screwdriver



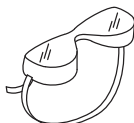
Level



Drill



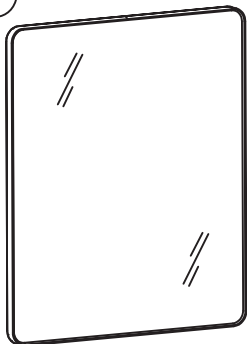
Tape Measure



Safety Glasses

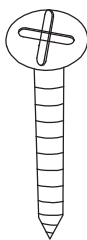
## PARTS

①



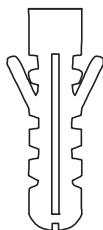
MIRROR(1 PCS)

②



ST4.2\*45(2 PCS)

③

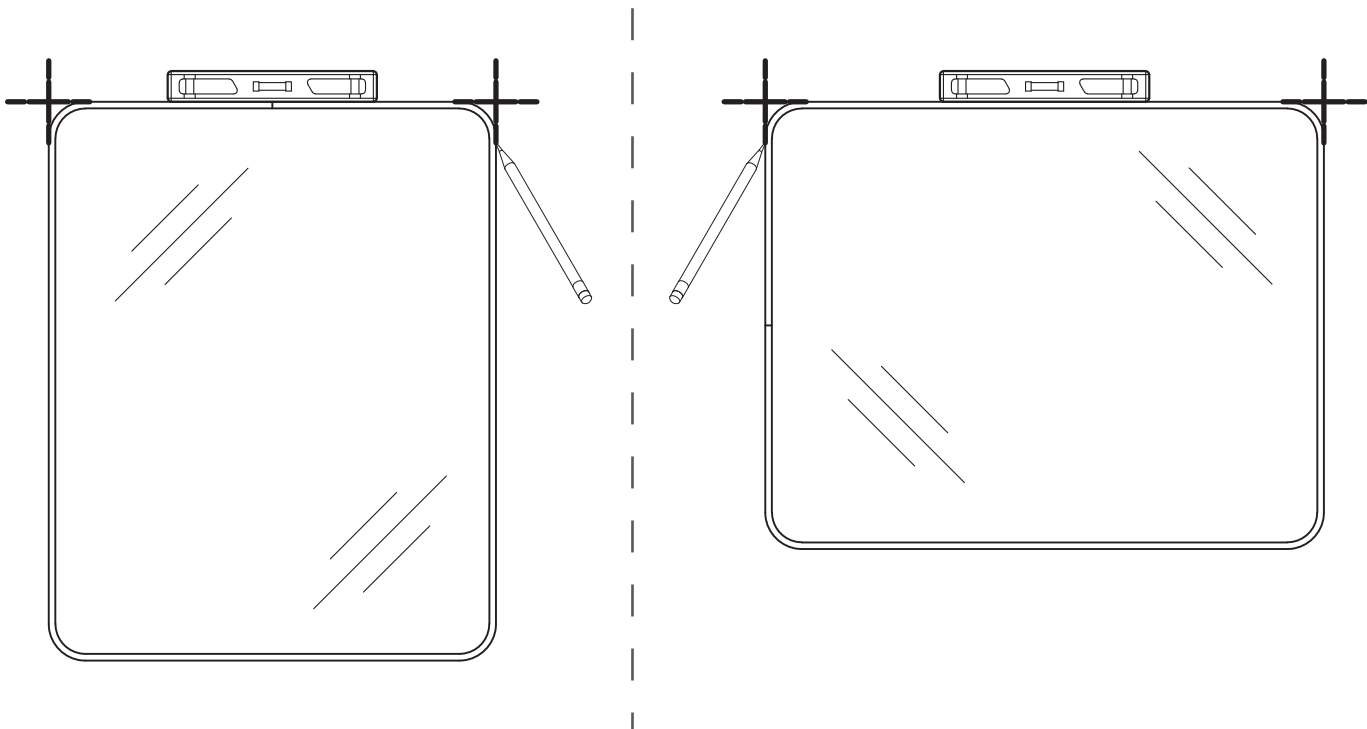


WALL PLUG(2 PCS)

## INSTALLATION INSTRUCTIONS

### STEP 1

Select the desired position of the mirror. Level and mark the location.

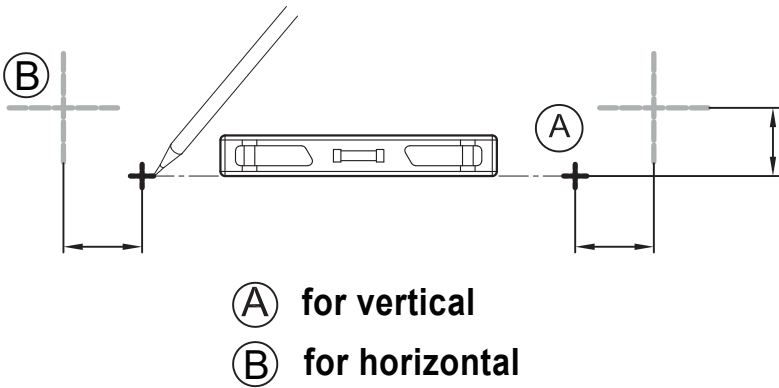


# Mirror Installation

## STEP 2

Mark the drilling locations and ensure marking are leveled, based on vertical or horizontal mounting. See chart below.

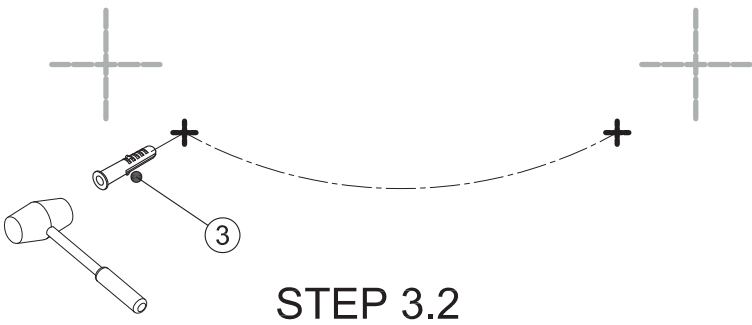
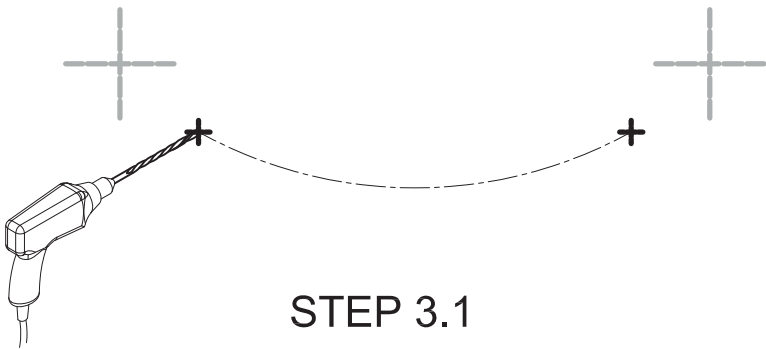
Vertical Assembly	Horizontal Assembly
Ⓐ	Ⓑ



## STEP 3

3.1 Drill holes about 2" deep at each of the marked locations.

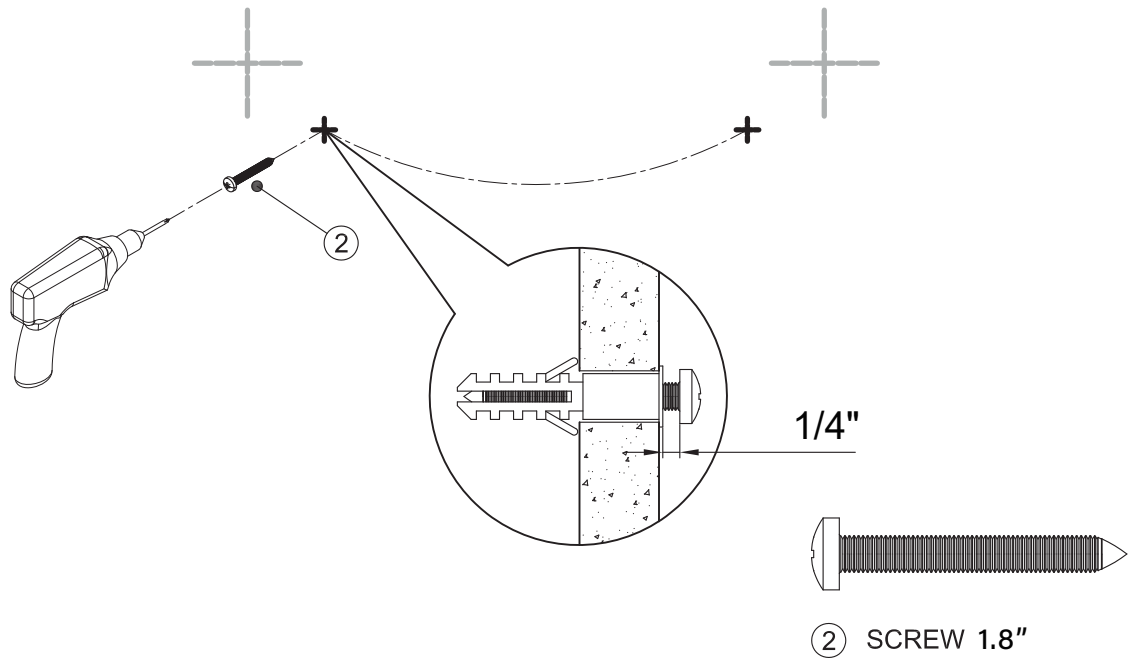
3.2 Insert wall plugs ③ .



# Mirror Installation

## STEP 4

Install Screw ② . Leave a gap of 1/4" between the head of the screw and the wall.



## STEP 5

place the mirror against the wall and slide it down, as shown in Figure 2.

