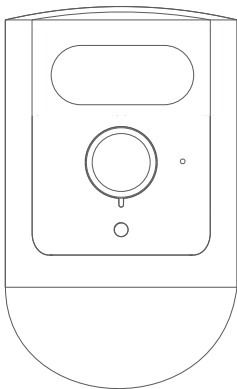


CONNECTED MAX®

SMART HOME BY **CREE** LIGHTING

SMART OUTDOOR CAMERA

QUICK START GUIDE



What's in the box

Please consult this checklist for all parts.



Outdoor Camera



Power Adapter



USB Cable



Magnetic Mount



Screws X2



Manual



Adjustable Mount



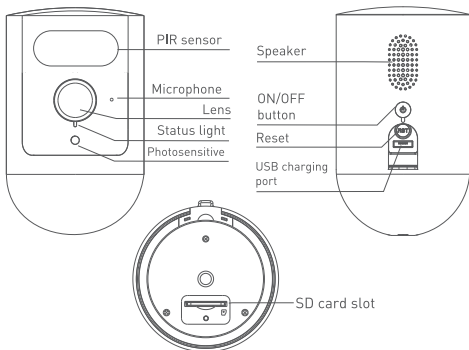
Magnetic Mount Bracket



Silicone plug*

* Silicone plug is used for the installation of solar panel to prevent water ingress.





USB charging port	DC 5V/1A Supports the USB cable of a Connected Max Solar Panel
-------------------	---

Power on/off	Press the button for 3 seconds to turn the camera on/off
--------------	--

Status light	<ul style="list-style-type: none">• Blinking red light (SLOW): awaiting Wi-Fi connection• Blinking red light (FAST): connecting the Wi-Fi• Solid blue light on: the camera is working correctly• Solid red light on: the network is malfunctional
--------------	--

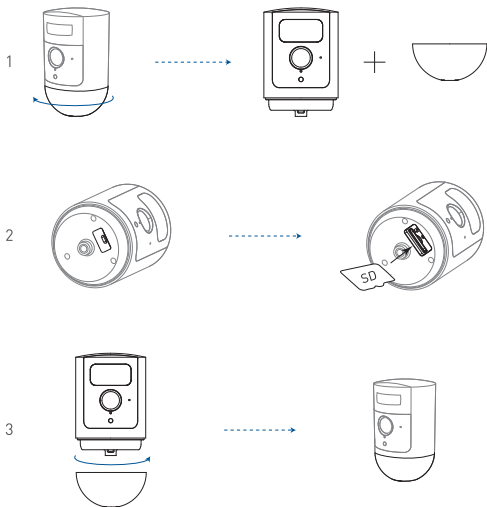
SD card slot	Support local SD Card storage (Max 128 GB)
--------------	--

Reset	Press and hold on for 5 seconds to reset the camera
-------	---

Battery	6700mAh (Two 18650 lithium-ion batteries)
---------	---

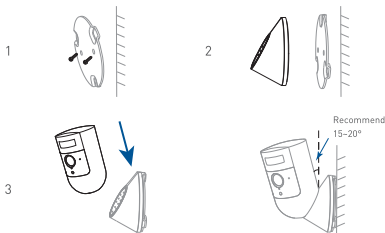
How to charge

Use included USB Cable and Power Adapter to plug into a standard wall outlet and into the charging port on the back of camera.



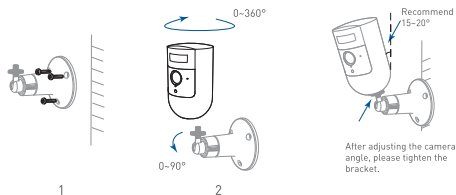
1. Loosen and remove the round cover on the bottom of the camera by turning the cover counter clockwise.
2. Remove the plug in the SD card slot and insert the SD card.
If you want to remove the SD card, press the SD card and then the SD card will pop out automatically.
3. Replace the cover on the bottom of the camera by turning the cover clockwise.

Installation with Magnetic Mount



1. Attach the Magnetic Mount Bracket on the wall with the included screws.
2. Place the Magnetic Mount to the Magnetic Mount Bracket.
3. Place the bottom of the Outdoor Camera to the Magnetic Mount.

Installation with Adjustable Mount



1. Attach the Adjustable Mount on the wall with the included screws.
2. Install the Outdoor Camera to the Adjustable Mount and tighten the screw.

Download

The Cree Lighting App is available for both iOS and Android. Search **Cree Lighting** in the App store or Google Play to download the app.



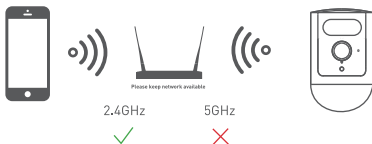
Download App (iOS)



Download App (Android)

Pairing to your network

The Connected Max Smart Outdoor Camera must pair to a 2.4GHz Wi-Fi network. Once paired, you can control on any Wi-Fi or cellular network. For most users, pairing will be quick and simple. But depending on the type of wireless router you have, you may need a little more information to get started. **Refer to our Wireless Router Guide at creelighting.com/connectedmax for more information.**



NOTE: If you need to re-select the Wi-Fi network, please press and hold the "RESET" button for 5 seconds, the device will restart, and the indicator will be flashing red.

How to pair your Outdoor Camera

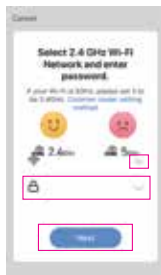
Download the Cree Lighting app and register your account. Open the Cree Lighting App, click "Sign Up", read the "User Agreement Privacy Policy" and click "Agree."



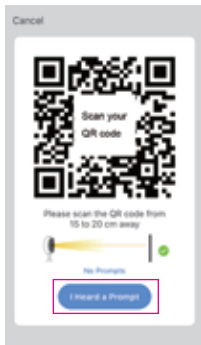
- 1 Click "Add Device" or "+" and then select "Cameras" to add Outdoor Camera.



- 2 The status indicator on the camera should be flashing quickly. If it is not, reset the camera and then tap "Next." Then input your Wi-Fi credentials and tap "Next." **NOTE: Camera only supports 2.4GHz Wi-Fi network**



- 3 Next, scan the QR code on your phone with the camera, when you hear an audible prompt, pairing has been complete. Tap on "I Heard a Prompt."



- 4 Now the Outdoor Camera will pair with your network.





IMPORTANT PRODUCT INFORMATION

SAFETY INFORMATION: FAILURE TO FOLLOW THESE SAFETY INSTRUCTIONS COULD RESULT IN FIRE, ELECTRIC SHOCK, OR OTHER INJURY OR DAMAGE.

This device is not intended for underwater use. To protect against electric shock, do not intentionally submerge or immerse your device, battery, or adapter in water or expose your device or adapter to other liquids. Do not spill any food or beverages on your device, battery or adapter.

Do not attempt to clean or polish your device, battery, or adapter with or expose your device, battery, or adapter to oil, lotion, or other abrasive substances. Don't expose your device, battery, or adapter to salt water or other conductive liquids. Do not expose your device, battery, or adapter to pressurized water, high velocity water, or extremely humid conditions (such as a steam room).

If your device, battery, or adapter gets wet, carefully unplug all cables without getting your hands wet and wait for it to dry completely before plugging it in again. Do not attempt to dry your device, battery, or adapter with an external heat source, such as a microwave oven, or hair dryer. To avoid risk of electric shock do not touch your device, battery, or adapter to any wires connected to your device during a lightning storm while your device, battery, or adapter is plugged in. If your device, battery, or adapter appears to be damaged, discontinue use immediately.

Use only accessories supplied with your device or specifically marketed for use with your device, to power your device. Use of third-party accessories may impact your device's performance. Read all safety instructions for any accessories before using with your device.



BATTERY SAFETY

Keep the battery and its power adapter in a well ventilated area and away from heat source, especially when in use or charging. Do not charge your battery near water or in extremely humid conditions. Do not open, disassemble, bend, deform, puncture, or shred the battery. Do not modify, attempt to insert foreign objects into the battery or immerse or expose to water or other liquids.

Do not expose the battery to fire, explosion, or other hazard. Promptly dispose of used batteries in accordance with applicable laws and regulations. If dropped and you suspect damage, take steps to prevent any ingestion or direct contact of fluids and any other materials from the battery with skin or clothes.

For best results, use type Li-Ion batteries. Install only new batteries of the same type in your product. Failure to insert batteries in the correct polarity, as indicated in the battery compartment, may shorten the life of the batteries or cause batteries to leak. Do not mix old and new batteries. Do not mix Alkaline, Standard (Carbon-Zinc) or Rechargeable (Nickel Cadmium) or (Nickel Metal Hydride) batteries. Always remove old, weak, or worn-out batteries promptly and recycle or dispose of them in accordance with local and national disposal regulations.

If a battery leaks, remove all batteries and recycle or dispose of them in accordance with battery manufacturer's recommendations. If fluid for the battery comes into contact with skin or clothes, flush with water immediately.

Do not charge outdoors. The device must be charged inside in a dry area.

FCC Statement

This equipment has been tested and found to comply with the limits for a Class B digital device, pursuant to part 15 of the FCC Rules. These limits are designed to provide reasonable protection against harmful interference in a residential installation. This equipment generates, uses and can radiate radio frequency energy and, if not installed and used in accordance with the instructions, may cause harmful interference to radio communications. However, there is no guarantee that interference will not occur in a particular installation. If this equipment does cause harmful interference to radio or television reception, which can be determined by turning the equipment off and on, the user is encouraged to try to correct the interference by one or more of the following measures:

- Reorient or relocate the receiving antenna.
- Increase the separation between the equipment and receiver.
- Connect the equipment into an outlet on a circuit different from that to which the receiver is connected.
- Consult the dealer or an experienced radio/TV technician for help.

FCC Radiation Exposure Statement

This device complies with FCC radiation exposure limits set forth for an uncontrolled environment and it also complies with Part 15 of the FCC RF Rules. This equipment must be installed and operated in accordance with provided instructions and the antenna(s) used for this transmitter must be installed to provide a separation distance of at least 20 cm from all persons and must not be co-located or operating in conjunction with any other antenna or transmitter. End-users and installers must be provided with antenna installation instructions and consider removing the no-collocation statement.

This device complies with Part 15 of the FCC Rules. Operation is subject to the following two conditions: (1) this device may not cause harmful interference, and (2) this device must accept any interference received, including interference that may cause undesired operation.

Caution!

Any changes or modifications not expressly approved by the party responsible for compliance could void the user's authority to operate the equipment.