

Project:		Catalog #:		Type:	
Prepared by:		Notes:		Date:	

E3WPA

LED Wall Pack
Integrated dusk-to-dawn photocell
5-yr Warranty



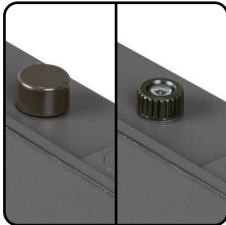
OVERVIEW

Energetic Lighting's E3WPA series LED commercial wall pack fixtures provide a quick and easy solution for warehouse and industrial applications. Available in 40W, 70W, and 90W variants. There are three color temperatures group to choose from soft white; cool white and daylight. Ideally suited for many outdoor areas such as building exteriors, parking lots, and pathways. The standard design looks and feels just like traditional HID wall packs, but without any of the high wattage heat and maintenance. An integrated dusk-to-dawn photocell sensor automatically turns the fixture on/off relative to ambient light, provide reliable illumination throughout the night while conserving energy during the day. Constructed out of heavy duty ADC12 die-cast aluminum with robust gaskets and seals to prevent moisture and insect ingress. Each fixture is rated for 50,000 hours with a dependable design that will operate hassle-free for many years.

KEY FEATURES

- All configurations are DLC 5.1-P listed
- 130+ LPW provides 40-60% in energy savings vs. HID equivalent fixtures
- Borosilicate glass diffusers for even illumination
- Emergency battery backup systems
- Integrated dusk-to-dawn photocell standard on all models
- 120-277V drivers with 0-10v dimming standard
- 90% lumen maintenance @ 50,000 hours – L90/50,000 | Projected L70 @ 170,000 hours (per IES TM21)
- We are based in the USA, offering high quality products at affordable prices backed by 5 year warranty and professional after-sales support

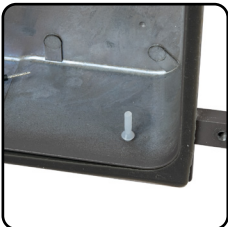
Highlights



Integrated dusk-to-dawn photocell



Wire Guard available (Not Included)



Weep hole plugs may be removed for proper condensation draining if desired



Integrated foam J-Box gasket provided for ease of installation and proper sealing of building wires



Multiple conduit twist-out (standard 1/2" trade size) provided:
Qty. 2 (bottom),
Qty. 1 (left), Qty. 1 (right)
Qty. 1 (top)



Integrated bubble level provided for faster and more convenient installation

Load Information

Input Voltage	120-277Vac
Power Factor	>0.9
THD	<20%
Low Temp Start	-30°C (-22°F)
Max Temp	40°C (104°F)
Unit Weight	10 LBS

Shipping Information

Item	Weight	Box Qty.
Standard profile	12 lbs	1 per

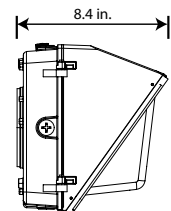
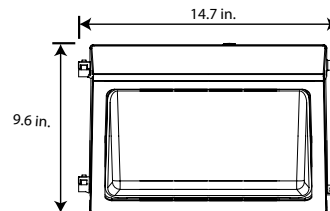
Lumen Maintenance

Housing Type	Ambient Temperature	TM-21 Lumen Maintenance (50,000 hours)	Theoretical L70 (hours)
Standard profile	25°C	>90%	170,000

Dimensions

Standard profile housing:

E3WPA40L-830
E3WPA40L-840
E3WPA40L-850
E3WPA70L-830
E3WPA70L-840
E3WPA70L-850
E3WPA90L-830
E3WPA90L-840
E3WPA90L-850



STOCK ORDERING INFORMATION

3000K CCT, Small Housing Profile

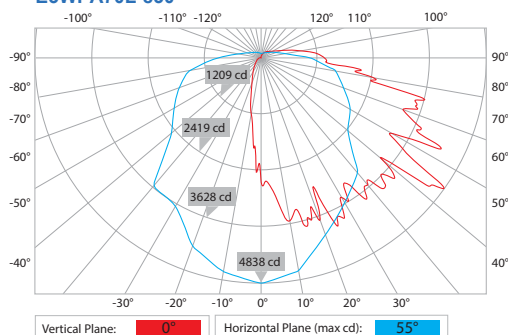
Catalog Logic	Lumens	WattS	LPW	Color Temp (K)	CRI	Voltage	Dimming	DLC
E3WPA40L	5200	40	130	3000I4000I5000	>80	120-277	0-10v	DLC5.1-P
E3WPA70L	9100	70	130	3000I4000I5000	>80	120-277	0-10v	DLC5.1-P
E3WPA90L	11700	90	130	3000I4000I5000	>80	120-277	0-10v	DLC5.1-P

PHOTOMETRIC DATA

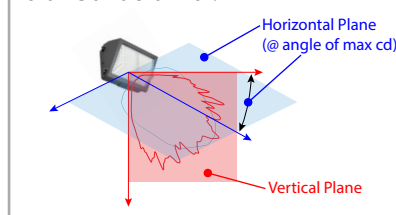
Cat Logic: E3WPA70L-830
Test Report: E3WPA70L_830.ies
CCT: 3000K
Lamp Type: LED
Lumens: 9591.2 LM
Input Watts: 69.33 W
Efficacy: 138 LM/W
NEMA Type: 7H x 3V
BUG Rating: B1-U4-G4

Polar Candela Plot

E3WPA70L-830



Reference Key for Polar Candela Plot:



Isofootcandle Sampling

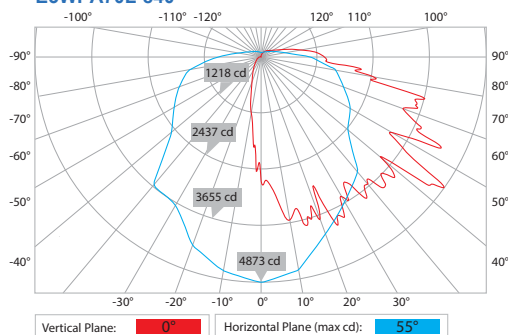
Data from E3WPA70L-830
(representative for all CCT in 70W series)

Mounting Height	Narrow		Wide	
	71 fc MAX	Iso-fc: 25 fc	1 fc	1 fc
5 ft		Diameter: 7.1 ft		21.5 ft
10 ft	28 fc MAX	Iso-fc: 20 fc	1 fc	28.1 ft
15 ft	12 fc MAX	Iso-fc: 10 fc	1 fc	32.3 ft
20 ft	6.2 fc MAX	Iso-fc: 5 fc	1 fc	32.2 ft
25 ft	3.9 fc MAX	Iso-fc: 3 fc	1 fc	34.8 ft
30 ft	3.1 fc MAX	Iso-fc: 3 fc	1 fc	32.7 ft

Cat Logic: E3WPA70L-840
Test Report: E3WPA70L_840.ies*
*pro-rated from E3WPA70L_830.ies
CCT: 4000K
Lamp Type: LED
Lumens: 9662 LM
Input Watts: 69.33 W
Efficacy: 139 LM/W
NEMA Type: 7H x 3V
BUG Rating: B1-U4-G4

Polar Candela Plot

E3WPA70L-840



Cat Logic: E3WPA70L-850
Test Report: E3WPA70L_850.ies
CCT: 5000K
Lamp Type: LED
Lumens: 9733.8 LM
Input Watts: 68.9 W
Efficacy: 141 LM/W
NEMA Type: 7H x 4V
BUG Rating: B1-U4-G5

Polar Candela Plot

E3WPA70L-850

