

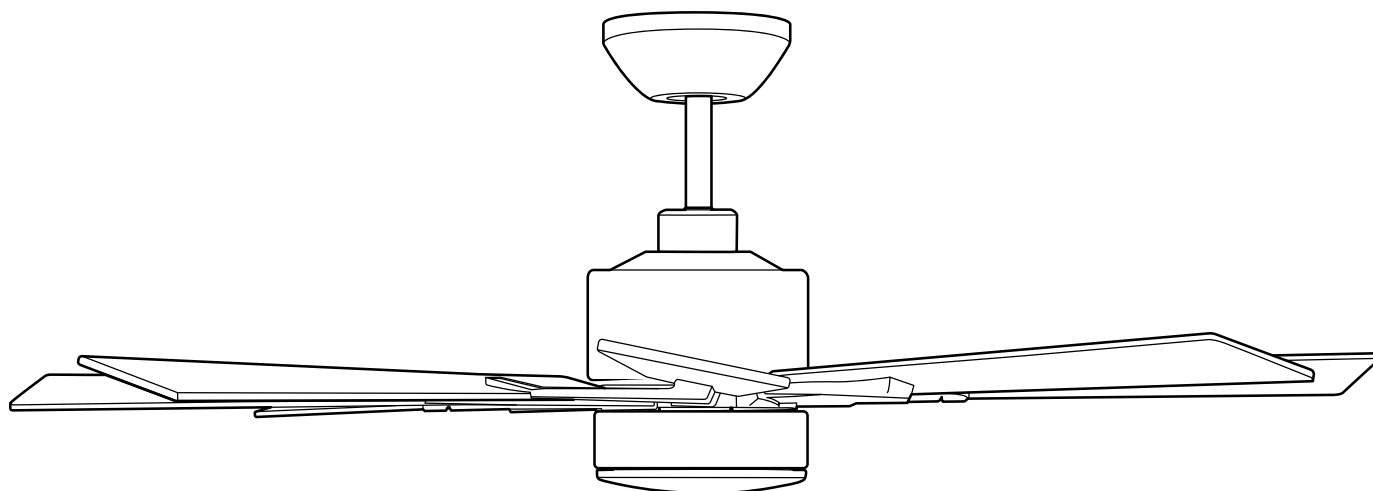
ITEM #5519816
5519821

OZARK LED CEILING FAN

MODEL # OZ52MBK8LR
OZ52BNK8LR

Español p. 21

**ATTACH YOUR RECEIPT HERE
ADJUNTE SU RECIBO AQUÍ**



Intertek
4007498

APPROVED FOR USE
IN DAMP LOCATIONS

Purchase Date _____



Questions, problems, missing parts? Before returning to your retailer, call our customer service department at **800-527-1292**, 8:30 a.m. - 5 p.m., CST, Monday - Friday.

TABLE OF CONTENTS

Safety Information	2
Package Contents	5
Hardware Contents	6
Preparation	6
Initial Installation	6
Downrod-Style Fan Mounting	8
Closemount-Style Fan Mounting	10
Wiring	11
Final Installation	13
Operating Instructions	17
Care and Maintenance	18
Troubleshooting	19
Limited Lifetime Warranty	20
Replacement Parts List	20

SAFETY INFORMATION

 **CAUTION:** Changes or modifications not approved by the party responsible for compliance could void the user's authority to operate the equipment.

*NOTE: This equipment has been tested and found to comply with the limits for a Class B digital device, pursuant to Part 15 of the FCC Rules. These limits are designed to provide reasonable protection against harmful interference in a residential installation. This equipment generates, uses and can radiate radio frequency energy and, if not installed and used in accordance with the instructions, may cause harmful interference to radio communications. However, there is no guarantee that interference will not occur in a particular installation. If this equipment does cause harmful interference to radio or television reception, which can be determined by turning the equipment off and on, the user is encouraged to try to correct the interference by one or more of the following measures:

- * Reorient or relocate the receiving antenna.
- * Increase the separation between the equipment and receiver.
- * Connect the equipment into an outlet on a circuit different from that to which the receiver is connected.

Consult the dealer or an experienced radio/TV technician for help.

The device complies with Part 15 of the FCC Rules. Operation is subject to the following two conditions: (1) this device may not cause harmful interference, (2) this device must accept any interference received, including interference that may cause undesired operation.

Distributed by: Litex Industries Inc., P.O. Box 535639, Grand Prairie, TX, 75050; 800-527-1292



SAFETY INFORMATION

READ AND SAVE THESE INSTRUCTIONS

Please read and understand this entire manual before attempting to assemble, install or operate the product. Review the accompanying assembly diagrams.

- Do not discard fan carton or foam inserts. Should this fan need to be returned to the factory for repairs, it must be shipped in its original packaging to ensure proper protection against damage that might exceed the initial cause for return.
- Make sure all electrical connections comply with local codes, ordinances, the National Electrical Code and ANSI/NFPA 70-1999. Hire a qualified electrician or consult a do-it-yourself wiring handbook if you are unfamiliar with installing electrical wiring.
- Make sure the installation site you choose allows a minimum clearance of 7 ft. from the blades to the floor and at least 30 in. from the end of the blades to any obstruction.
- After you install the fan, make sure all connections are secure to prevent the fan from falling.
- The net weight of this fan including the light kit is: 18.3 lbs.

The DC Motor will not operate until blades are installed.

DANGER

When using an existing outlet box, make sure the outlet box is securely attached to the building structure and can support the full weight of the fan. Failure to do this can result in serious injury or death. The stability of the outlet box is essential in minimizing wobble and noise in the fan after installation is complete.

To reduce the risk of serious bodily injury, DO NOT use power tools to assemble any part of the fan, including the blades.

WARNING



To reduce the risk of fire, electrical shock or personal injury, mount fan to outlet box marked "ACCEPTABLE FOR FAN SUPPORT OF 35 LBS. OR LESS" and use mounting screws provided with the outlet box. Most outlet boxes commonly used for the support of lighting fixtures are not acceptable for fan support and may need to be replaced. Consult a qualified electrician if in doubt.

When mounting fan to a ceiling outlet box, use a METAL octagonal outlet box; do NOT use a plastic outlet box. Secure the outlet box directly to the building structure. The outlet box and its support must be able to support the moving weight of the fan (at least 35 lbs.).

To avoid personal injury, the use of gloves may be necessary while handling fan parts with sharp edges.

To reduce the risk of fire, electrical shock or personal injury, wire connectors provided with this fan are designed to accept only one 12-gauge house wire and two lead wires from the fan. If your house wire is larger than 12-gauge or there is more than one house wire to connect to the corresponding fan lead wires, consult an electrician for the proper size wire connectors to use.



SAFETY INFORMATION

WARNING

To reduce the risk of fire or electrical shock, do not use the fan with any solid state speed control device or control fan speed with a full range dimmer switch.

To reduce the risk of fire, electrical shock or personal injury, do not bend the blades when installing or balancing them or when cleaning the fan. Do not insert objects between the rotating fan blades.

To reduce the risk of personal injury, use *only* parts provided with this fan. The use of parts *OTHER* than those provided with this fan will void the warranty.

Before proceeding, be sure to shut off electricity at main switch or circuit breaker in order to avoid electrical shock.

CAUTION

Be sure outlet box is properly grounded and that a ground wire (green or bare) is present.

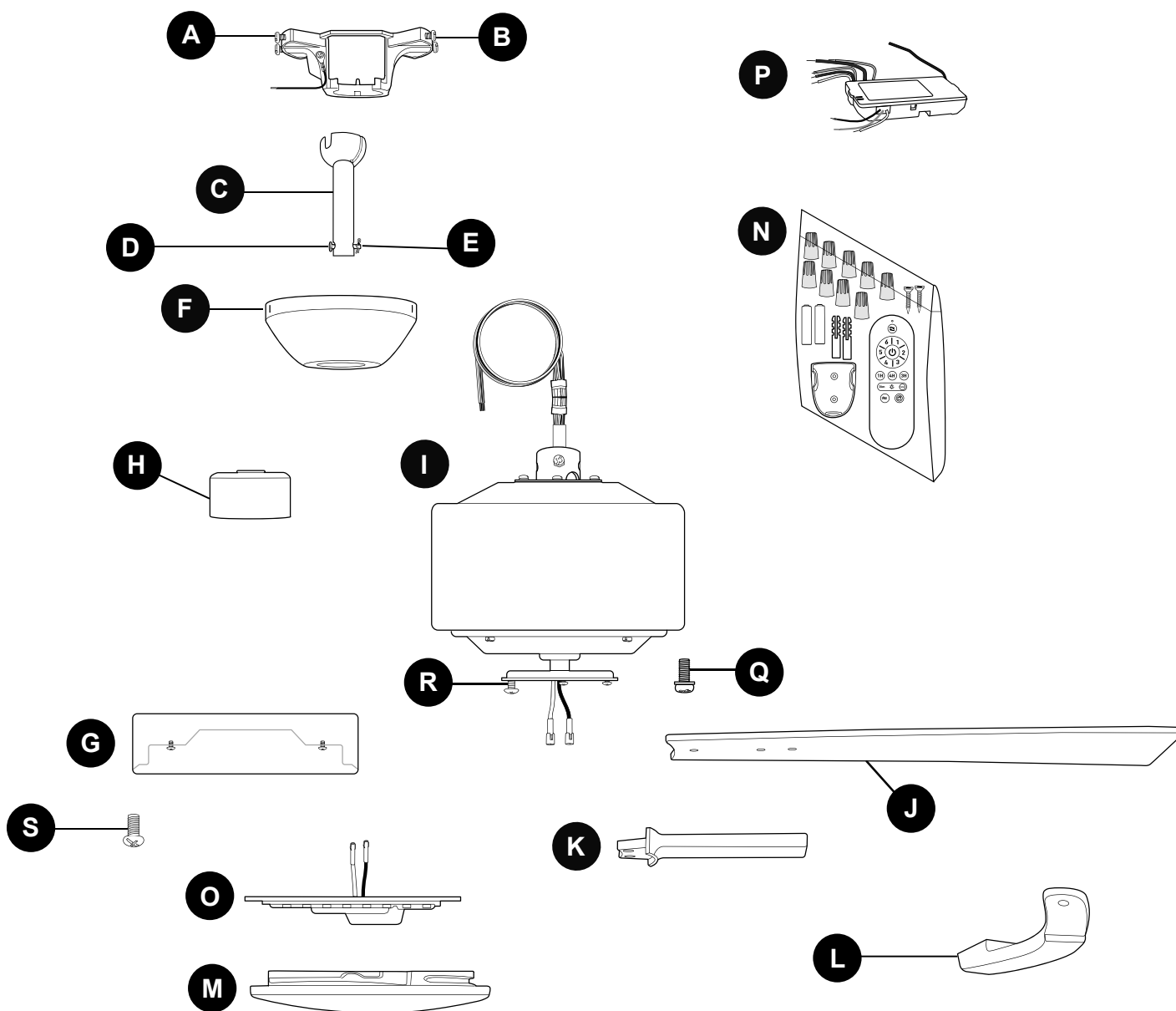
Before beginning installation, carefully check all screws, bolts and nuts on fan motor assembly to ensure that they are secured.

Once installation is complete, carefully check all screws, bolts and nuts on fan motor assembly to ensure that they are secured.

Do NOT tamper with or attempt to repair LED component. The light source is designed for this specific application and should not be serviced by untrained personnel. If any servicing is required, call our customer service department.

Due to the weight and construction of this fan, it is advisable to seek the help of another person.

PACKAGE CONTENTS



PART	DESCRIPTION	QUANTITY
A	Mounting Bracket	1
B	Canopy Mounting Screw (preassembled)	4
C	Downrod	1
D	Pin (preassembled)	1
E	Clip (preassembled)	1
F	Canopy	1
G	Fitter Plate	1
H	Yoke Cover	1
I	Motor Housing	1
J	Blade	8

PART	DESCRIPTION	QUANTITY
K	Blade Arm	8
L	Blade Bar	8
M	Shade	1
N	Remote Pack	1
O	LED Light Kit	1
P	Remote Control Receiver	1
Q	Motor Screws/Lock Washers (preassembled)	16 +1 extra
R	Motor Plate Screws (preassembled)	3
S	Fitter Plate Screws (preassembled)	3

! IMPORTANT REMINDER: You must use the parts provided with this fan for proper installation and safety.

HARDWARE CONTENTS (shown actual size)

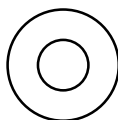
AA



Blade
Screw

Qty. 16
+ 1 extra

BB



Fiber
Washer

Qty. 16
+ 1 extra

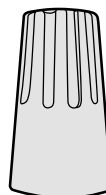
CC



Blade Bar
Screw/Lock
Washer

Qty. 8
+ 1 extra

DD



Wire
Connector

Qty. 6

PREPARATION

Before beginning assembly of product, make sure all parts are present. Place motor on carpet or on foam to avoid damage to finish. Compare parts with package contents list and hardware contents list. If any part is missing or damaged, do not attempt to assemble the product.

Estimated Assembly Time: 120 minutes

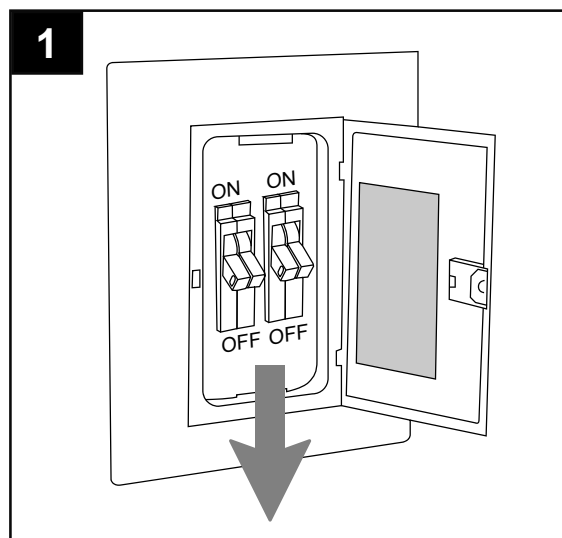
Tools Required for Assembly (not included): Electrical Tape, Phillips Screwdriver, Pliers, Safety Glasses, Stepladder, Wire Strippers and Precision Screwdriver (0 x 2 in.).

Helpful Tools (not included): AC Tester Light, Tape Measure, Do-It-Yourself Wiring Handbook and Wire Cutters.

INITIAL INSTALLATION

1. Turn off circuit breakers and wall switch to the fan supply line leads.

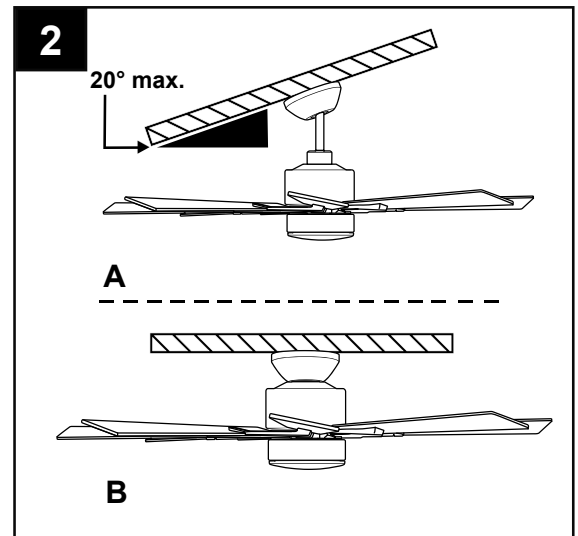
⚠ DANGER: Failure to disconnect power supply prior to installation may result in serious injury or death.



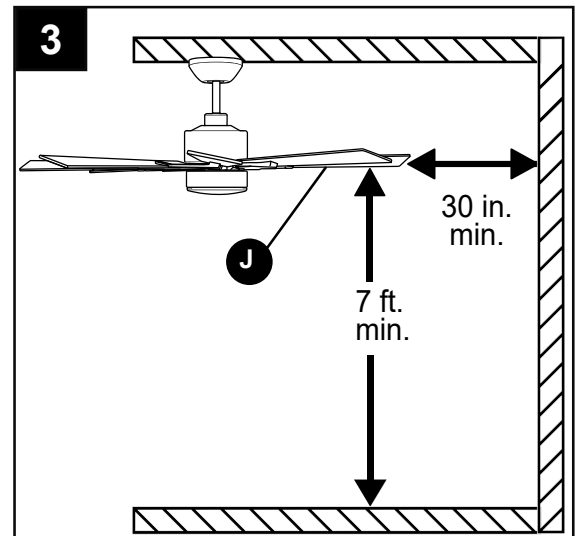
INITIAL INSTALLATION

2. Determine mounting method to use.
 - A. Downrod mount (standard or angled ceiling).
 - B. Closemount (standard ceiling only).**IMPORTANT:** If using the angle mount, check to make sure the ceiling angle is not steeper than 20°.

***Helpful Hint:** Downrod-style mounting is best suited for ceilings 8 ft. or higher. For taller ceilings you may want to use a longer downrod (not included). Angle-style mounting is best suited for angled or vaulted ceilings. A longer downrod is sometimes necessary to ensure proper blade clearance. Closemount mounting is more suitable for ceilings lower than 8 ft. high.



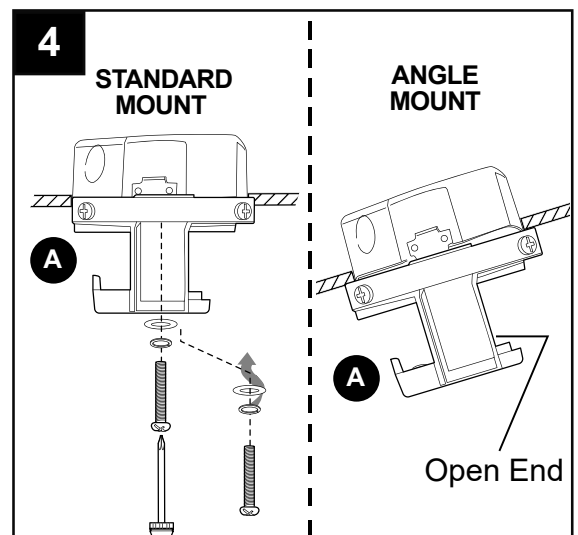
3. Check to make sure blades (J) will be at least 30 in. from any obstruction and at least 7 ft. above the floor.



4. Secure mounting bracket (A) to outlet box (not included) using screws, spring washers and flat washers provided with the outlet box.

***NOTE:** It is very important you use the proper hardware when installing the mounting bracket (A) as this will support the fan.

IMPORTANT: If using the angle mount, make sure open end of mounting bracket (A) is installed facing the higher point of the ceiling, and ensure the ceiling angle is not steeper than 20°.

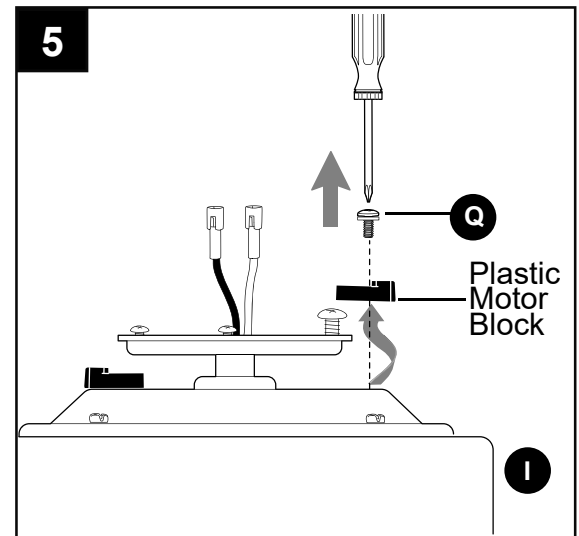


INITIAL INSTALLATION

5. Remove motor screws/lock washers (Q) from underside of motor housing (I) and save for blade arm (K) attachment later on. [If there are plastic motor blocks installed with the motor screws/lock washers (Q), discard the plastic motor blocks.]

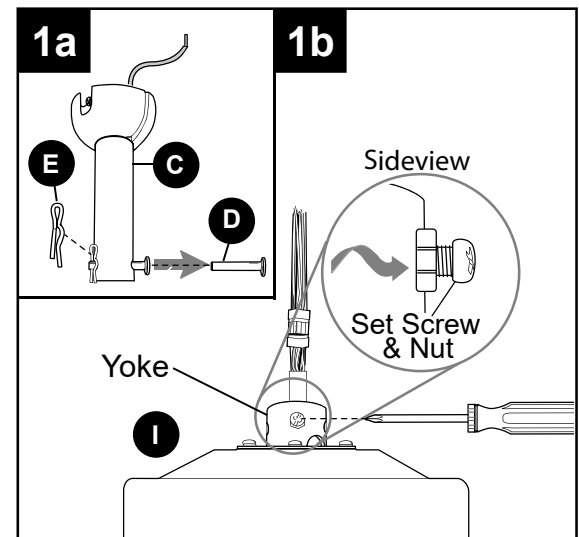
For **DOWNROD-STYLE FAN MOUNTING**, proceed to Step 1 below.

For **CLOSEMOUNT-STYLE FAN MOUNTING**, skip to page 10.

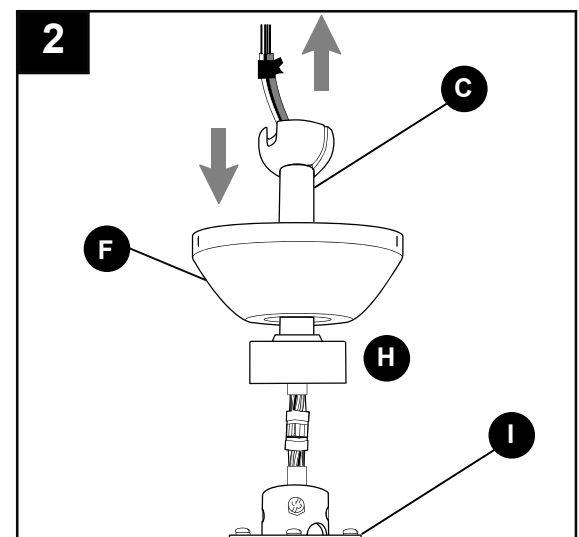


DOWNROD-STYLE FAN MOUNTING

- 1a. Remove pin (D) and clip (E) from downrod (C).
- 1b. Partially loosen preassembled set screws and nut in yoke at top of motor housing (I).

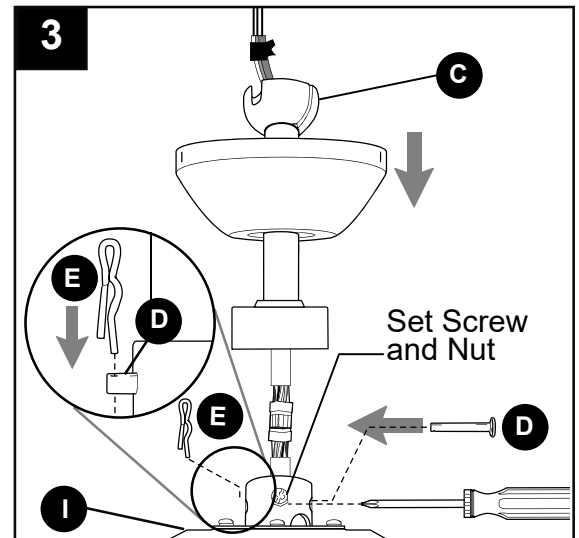


2. Insert downrod (C) through yoke cover (H) and canopy (F). Thread wires from motor housing (I) up through downrod (C).



DOWNROD-STYLE FAN MOUNTING

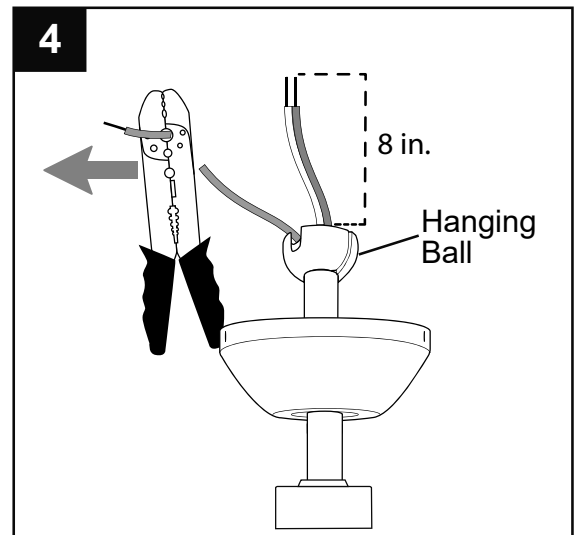
3. Slip downrod (C) into yoke, align holes and re-install pin (D) and clip (E). Tighten downrod set screws and then tighten nut.



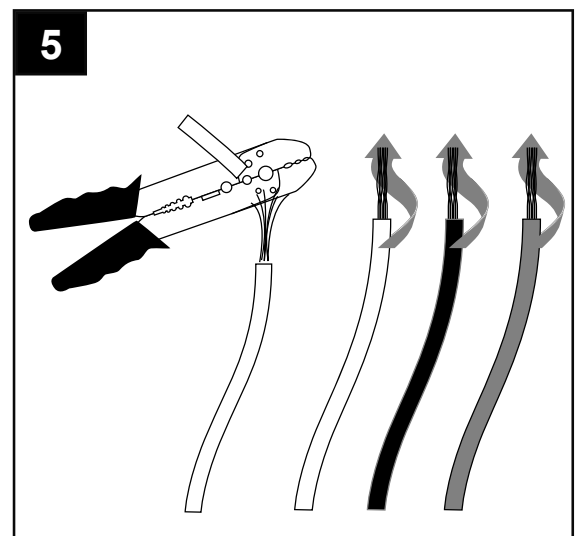
4. Depending on the length of downrod you use, you may need to cut the lead wires back to simplify the wiring. If you decide to cut back the lead wires, it is suggested you do so in the following manner:

Take the lead wires and make sure you have pulled them all the way through the top of the downrod. Start at the TOP of the hanging ball on the downrod and measure 8 in. of lead wire, and then cut the excess wire off with wire cutters (not included).

NOTE: If you do *not* cut back the lead wires, **Steps 4 and 5 are not necessary and you may proceed to Step 6 instead.**



5. If you cut back the lead wires in Step 4, strip 3/4 in. of insulation from end of each wire -- WHITE, BLACK, GREEN and BLUE (if applicable). Twist stripped ends of each strand of wire within the insulation with pliers (not included).

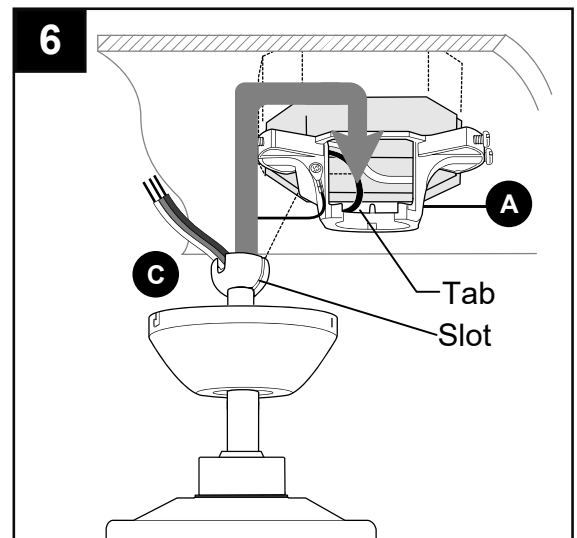


DOWNROD-STYLE FAN MOUNTING

6. Install hanging ball of downrod (C) into opening of mounting bracket (A). Align the slot in hanging ball with the tab in mounting bracket (A).

⚠ DANGER: Failure to align slot in hanging ball with the tab in mounting bracket (A) may result in serious injury or death.

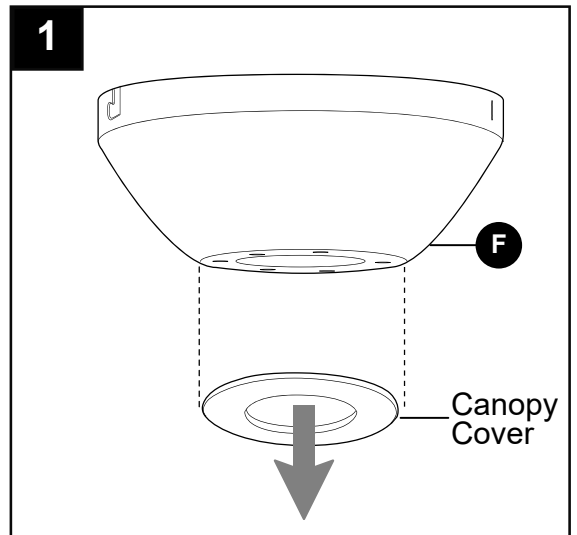
Continue to **WIRING** on page 11.



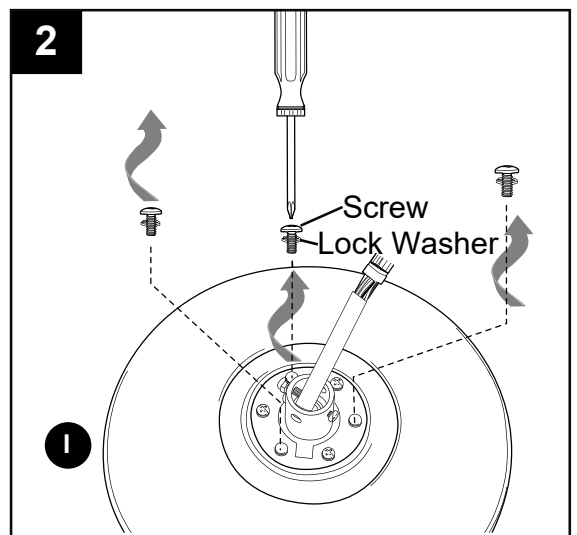
CLOSEMOUNT-STYLE FAN MOUNTING

1. Remove preassembled canopy cover from bottom of canopy (F).
NOTE: It may be necessary to use the handle end of a screwdriver (not included) to remove the canopy cover by tapping on the canopy cover from the *inside* of the canopy (F).

NOTE: The downrod (C), yoke cover (H) and canopy cover are not used in this type of installation.

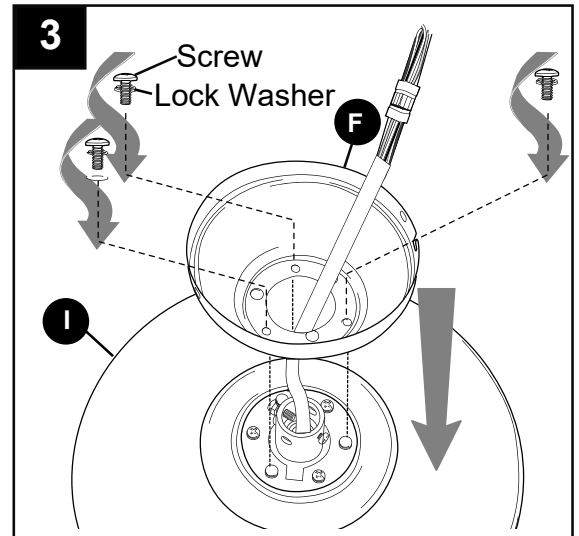


2. Remove every other preassembled screw/lock washer from top of motor housing (I).

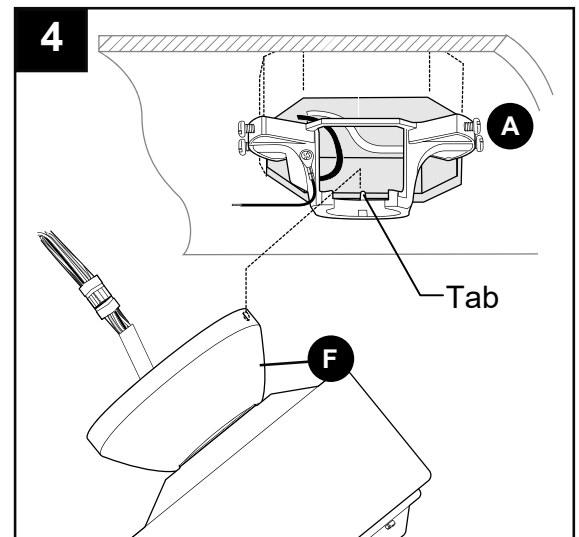


CLOSEMOUNT-STYLE FAN MOUNTING

3. Pull wires up through hole in the middle of the canopy (F) and attach canopy (F) to motor housing (I) using the three screws/lock washers previously removed.



4. Temporarily hang fan on the tab on the mounting bracket (A) using one of the non-slotted holes in the canopy (F).



WIRING

⚠ WARNING: To reduce the risk of fire, electrical shock or personal injury, wire connectors provided with this fan are designed to accept only one 12-gauge house wire and two lead wires from the fan. If your house wire is larger than 12-gauge or there is more than one house wire to connect to the corresponding fan lead wires, consult an electrician for the proper size wire connectors to use.

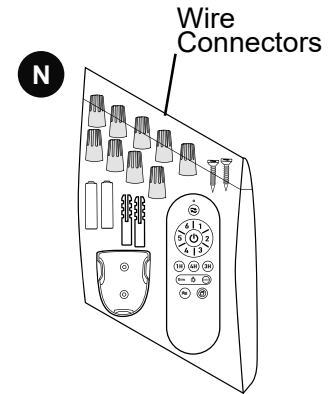
⚠ CAUTION: Be sure outlet box is properly grounded and that a ground (GREEN or BARE) wire is present.

⚠ WARNING: If house wires are different colors than referred to in the following steps, stop immediately. A professional electrician is recommended to determine wiring.

⚠ WARNING: Using a full range dimmer switch (not included) to control fan speed will cause a loud humming noise from fan. To reduce the risk of fire or electrical shock, do NOT use a full range dimmer switch to control fan speed.

WIRING

IMPORTANT: Make the necessary wiring connections for remote control operation as detailed below and in the accompanying drawing. For each wire connection, use wire connectors from the remote pack (N), making sure to screw each wire connector on in a clockwise direction.



1. Connect all GROUND (GREEN) wires from fan (on downrod (C), if applicable, mounting bracket (A)) and remote control receiver (P) to BARE/GREEN supply wire from ceiling.

Connect BLACK wire (labeled AC IN L) from remote control receiver (P) to BLACK supply wire from ceiling.

Connect WHITE wire (labeled AC IN N) from remote control receiver (P) to WHITE supply wire from ceiling.

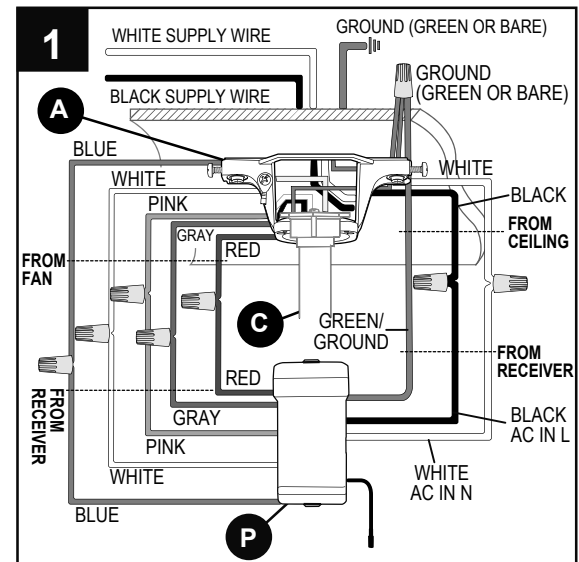
Connect RED wire (labeled TO MOTOR) from remote control receiver (P) to RED wire from motor housing (I).

Connect GRAY wire (labeled TO MOTOR) from remote control receiver (P) to GRAY wire from motor housing (I).

Connect PINK wire (labeled FOR MOTOR) from remote control receiver (P) to PINK wire from motor housing (I).

Connect BLUE wire (labeled FOR LIGHT L) from remote control receiver (P) to BLUE wire from motor housing (I).

Connect WHITE wire (labeled FOR LIGHT N) from remote control receiver (P) to WHITE wire from motor housing (I).



WIRING

2. Wrap electrical tape (not included) around each individual wire connector (DD) down to the wire.

⚠ WARNING: Make sure no bare wire or wire strands are visible after making connections. Place GREEN and WHITE connections on opposite side of the outlet box from the BLACK and BLUE (if applicable) connections.

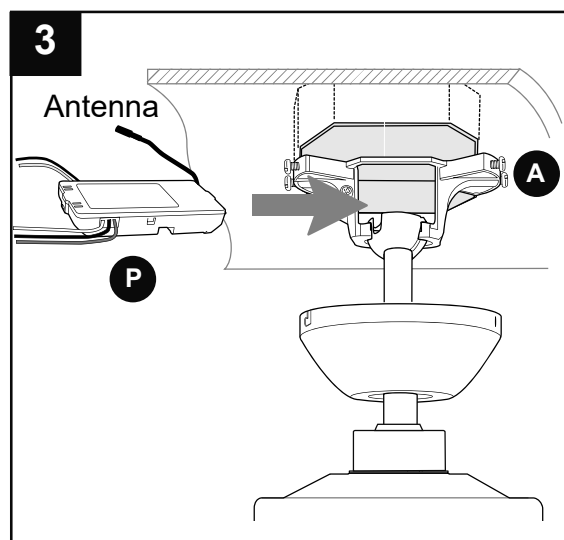
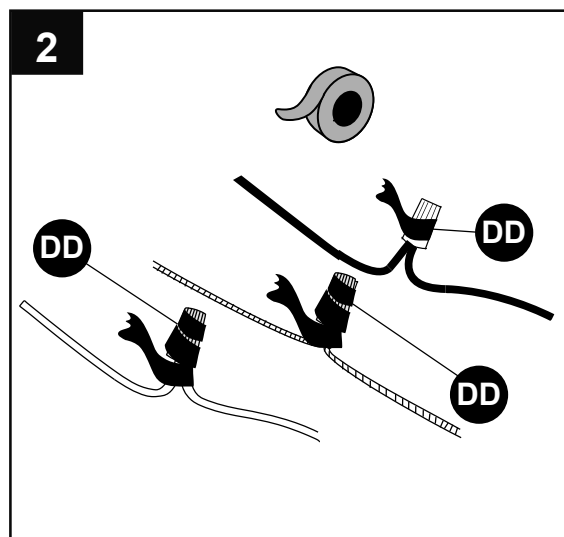
Hardware Used



3. Gently slide remote control receiver (P) flat-side up into mounting bracket (A). Turn spliced/taped wires upward and gently push wires and wire connectors (DD) into outlet box. Let antenna from remote control receiver (P) hang to the side.

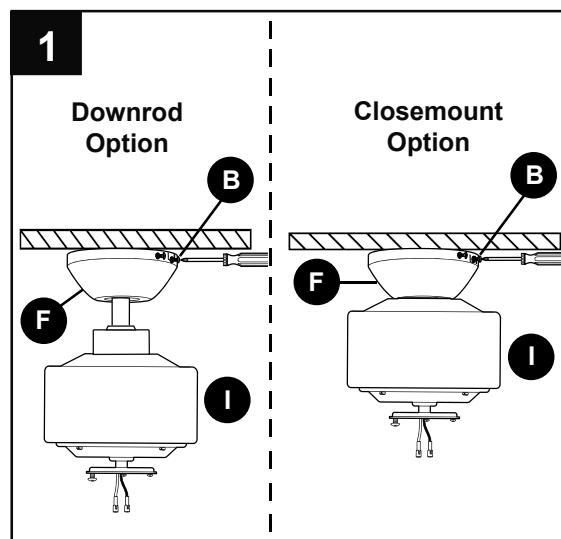
NOTE: The remote control included with this fan meets the following requirements:

- a. Not for use with solid state fans.
- b. Electrical rating: 120V / 60 Hz;
motor wattage: 65W MAX.



FINAL INSTALLATION

1. Temporarily lift canopy (F) to mounting bracket (A) to determine which two canopy mounting screws/lock washers (B) in mounting bracket (A) align with slotted holes in canopy (F) and partially loosen these two canopy mounting screws/lock washers (B). Remove the other two canopy mounting screws/lock washers (B). Now, lift canopy (F) to mounting bracket (A) again, aligning slotted holes in canopy (F) with loosened canopy mounting screws (B) in mounting bracket (A). Twist canopy (F) clockwise to lock. Re-insert the two canopy mounting screws/lock washers (B) that were just removed and tighten all canopy mounting screws/lock washers (B) securely.




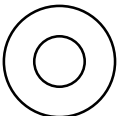
FINAL INSTALLATION

2. **⚠ DANGER:** To reduce the risk of serious bodily injury, DO NOT use power tools to assemble the blades (J). If screws are overtightened, blades (J) may crack and break.

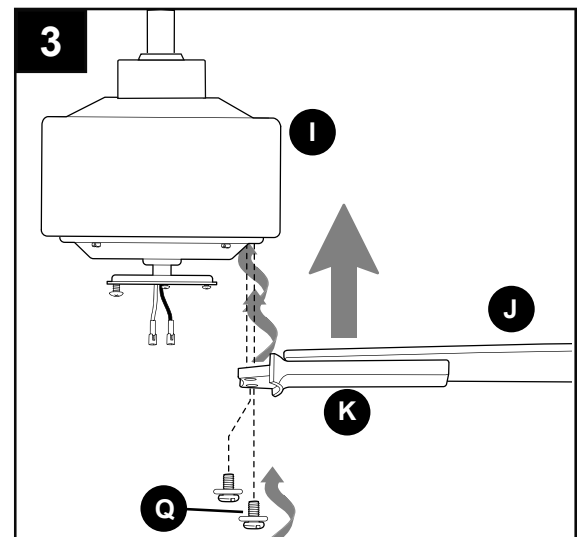
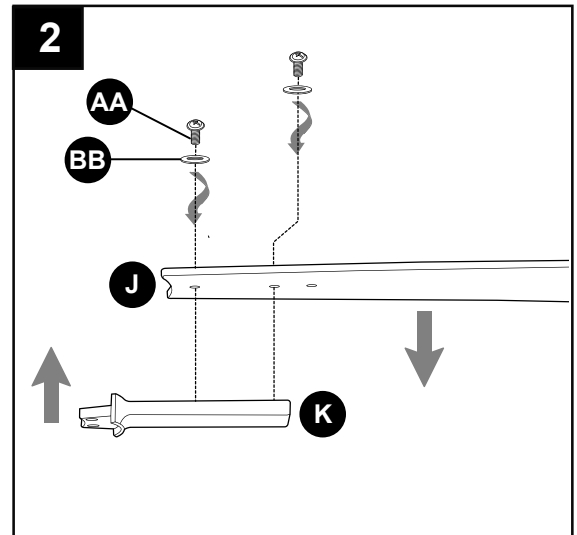
Partially insert two blade screws (AA) along with two fiber washers (BB) into first two holes in blade (J) to attach blade arm (K) to blade (J). Then, tighten each blade screw (AA).

Repeat for remaining blades (J) and blade arms (K).

Hardware Used

AA	Blade Screw		x 16
BB	Fiber Washer		x 16

3. Attach blade arms (K) to the bottom of motor housing (I) with motor screws/lock washers (Q) previously removed (Step 5, page 8). Partially tighten motor screws/lock washers (Q). **NOTE:** Do NOT completely secure each blade arm (K) before proceeding to the next. Blades arms (K) must be loose for next step.



FINAL INSTALLATION

4. Connect each blade (J) using the blade bars (L).

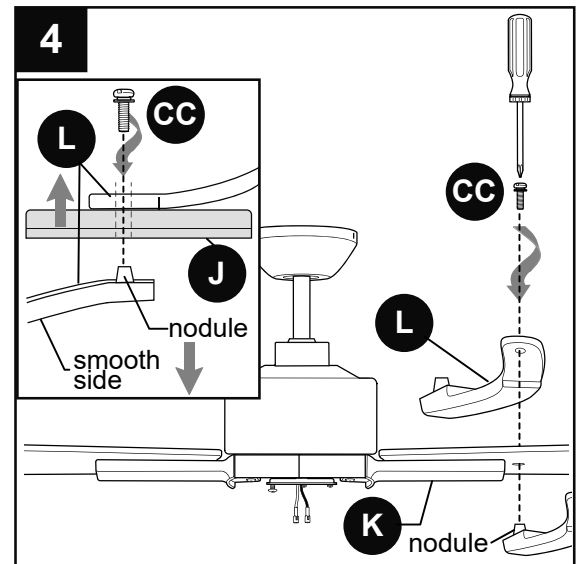
On the topside of the blade (J), place the bent portion of the blade bar (L) directly over the opening above the end of the blade arm (K), aligning the holes. Then, on the underside of the blade (J), insert the nodule portion of another blade bar (L) directly under the same hole. Secure with one blade bar screw/lock washer (CC).

NOTE: Blade bar (L) must be turned with the smooth side *toward* the floor.

Repeat step for the remaining blade bars (L) until the blades (J) are all connected.

⚠ CAUTION: Assistance from another person is recommended for this step.

Once blade bars (L) are secure, completely tighten all motor screws/lock washers (Q) in blade arms (K).

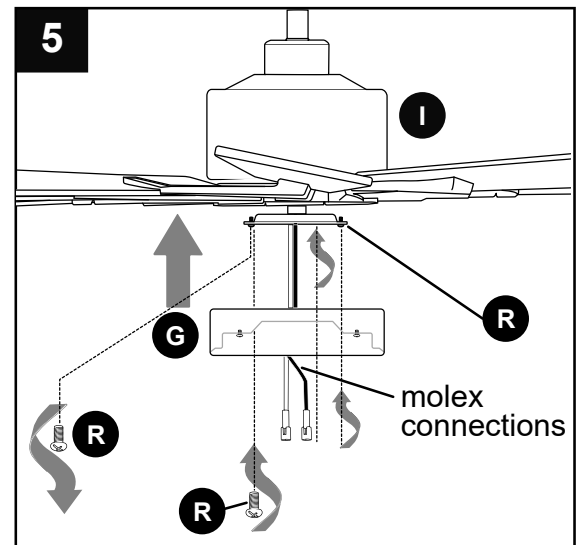


Hardware Used

CC Blade Bar Screw/Washer  x 8

5. Remove one motor plate screw (R) from motor plate preassembled on the underside of the motor housing (I) and partially loosen the other two motor plate screws (R).

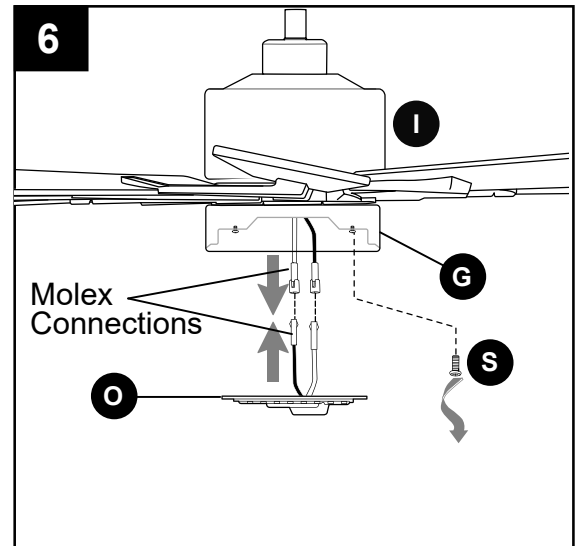
Align slotted holes in fitter plate (G) with loosened motor plate screws (R), allowing molex connections to come through hole in fitter plate (G). Twist fitter plate (G) to lock. Re-insert the motor plate screw (R) that was removed and securely tighten all three motor plate screws (R).



FINAL INSTALLATION

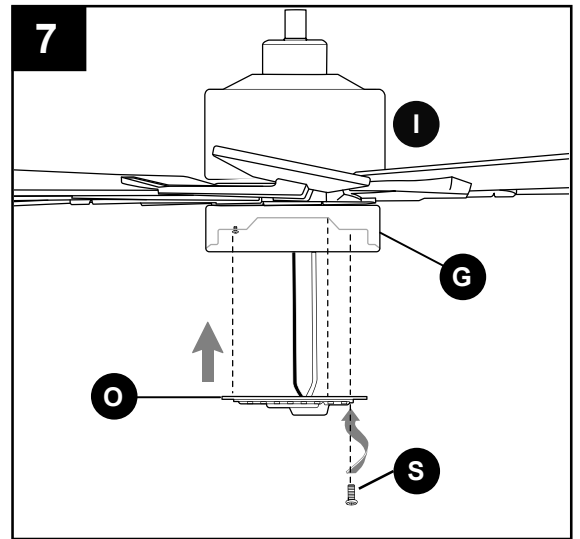
6. Remove one fitter plate screw (S) from underside of fitter plate (G) and partially loosen the other two fitter plate screws (S).

Connect WHITE wire from motor housing (I) to WHITE wire from LED light kit (O).
Connect BLACK (or BLUE) wire from motor housing (I) to BLUE wire from LED light kit (O). Make sure connections are secure.



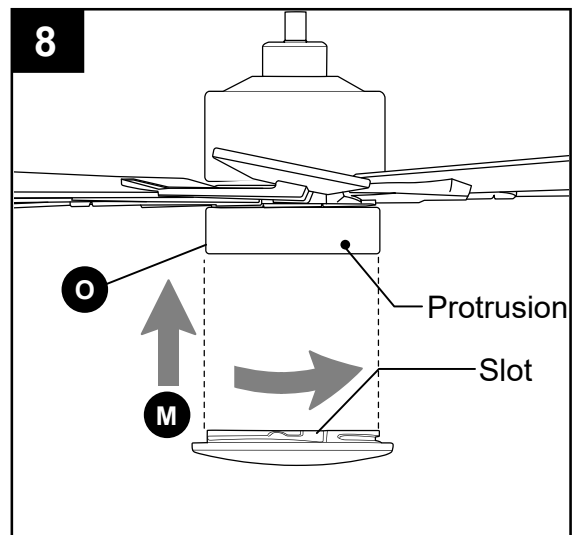
7. Carefully arrange wire connections inside fitter plate (G). Align slotted holes in LED light kit (O) with loosened fitter plate screws (S). Twist LED light kit (O) to lock. Re-insert the fitter plate screw (S) that was removed and securely tighten all three fitter plate screws (S).

⚠ CAUTION: Make sure no wires are being pinched before securing LED light kit (O).



8. Align slots on shade (M) with protrusions on the inside border of fitter plate (G). Turn shade (M) *clockwise* until it no longer turns.

NOTE: Pull down gently on the shade (M) to make sure it is completely secured.



OPERATING INSTRUCTIONS

⚠ CAUTION: The remote control transmitter can be programmed to multiple receivers or fans. If this is not desired, turn wall switch off to any other programmable receiver or fan.

FCC Compliance Notice for Remote Control and LED Light Kit

⚠ CAUTION: Changes or modifications not approved by the party responsible for compliance could void the user's authority to operate the equipment.

This device complies with Part 15 of the FCC Rules. Operation is subject to the following two conditions: (1) this device may not cause harmful interference, (2) this device must accept any interference received, including interference that may cause undesired operation.

*NOTE: This equipment has been tested and found to comply with the limits for a Class B digital device, pursuant to Part 15 of the FCC Rules. These limits are designed to provide reasonable protection against harmful interference in a residential installation. This equipment generates, uses and can radiate radio frequency energy and, if not installed and used in accordance with the instructions, may cause harmful interference to radio communications. However, there is no guarantee that interference will not occur in a particular installation. If this equipment does cause harmful interference to radio or television reception, which can be determined by turning the equipment off and on, the user is encouraged to try to correct the interference by one or more of the following measures:

- * Reorient or relocate the receiving antenna.
- * Increase the separation between the equipment and receiver.
- * Connect the equipment into an outlet on a circuit different from that to which the receiver is connected.

Consult the dealer or an experienced radio/TV technician for help.

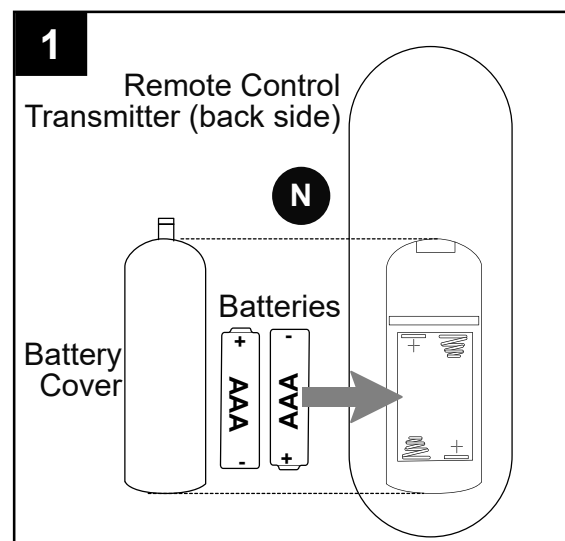
1. Locate remote control transmitter in remote pack (N). Remove battery cover using a precision screwdriver (not included). Install two AAA batteries from remote pack (N). Observe diagram inside battery compartment to install batteries correctly.

⚠ WARNING: Batteries are to be inserted with correct polarity.

⚠ WARNING: Choking/Ingestion Hazard - Small parts. Keep batteries away from children.

NOTE: DO NOT mix old and new batteries; DO NOT mix alkaline, standard (carbon - zinc) or rechargeable (nickel - cadmium) batteries or equivalent.

NOTE: Batteries are NOT rechargeable. Remove batteries with low or no charge and dispose of properly.

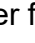


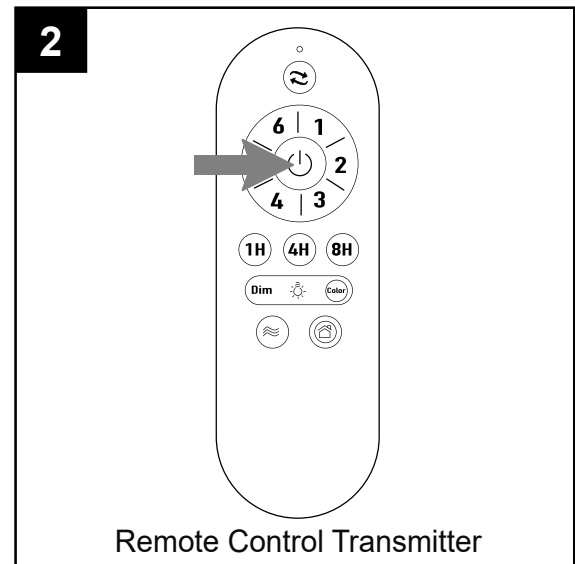
⚠ CAUTION: "DO NOT DISPOSE OF BATTERIES IN FIRE, BATTERIES MAY EXPLODE OR LEAK."
- When disposing of household alkaline batteries, it is best to check with your local and state recycling or household hazardous waste coordinators concerning the specifics of the program in your area. You may also locate a recycling center by calling 1-800-8-BATTERY or 1-877-2-RECYCLE or visit www.epa.gov/epawaste/index.htm or www.earth911.org for more information.

OPERATING INSTRUCTIONS

2. Restore electrical power.

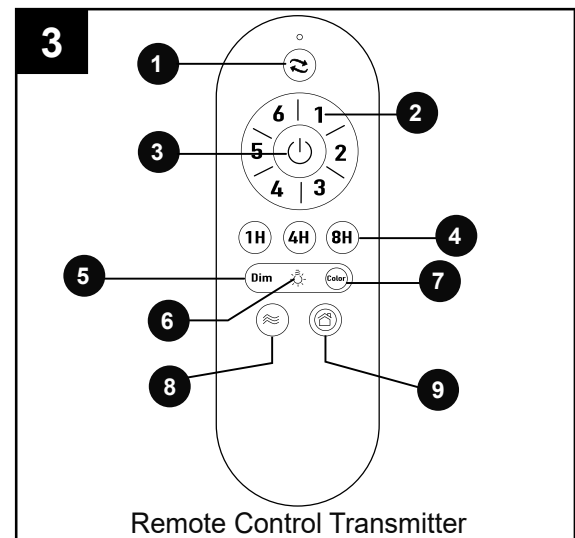
IMPORTANT: To prevent damage to remote control transmitter, remove the batteries if not used for long periods. Store the remote control transmitter away from excess heat or humidity.

NOTE: If fan and/or remote control fail(s) to operate or you have purchased a new remote control transmitter, make sure to turn the power off first. Restore electrical power. Within 30 seconds of restoring electrical power, press and hold the ON/OFF button () on the remote control transmitter for 5 seconds or until fan beeps. Use the remote control transmitter to test the light and fan functions to confirm the learning process is complete.



3. Operation buttons on the front panel of the remote control transmitter:

- 1 - Reverse function — fan must be set on low before reversing blade direction
- 2 - Fan speeds: 1 (lowest) to 6 (highest) and to turn fan ON
- 3 - **OFF** power button for fan
- 4 - Timer mode: fan may be set to run for
 - 1 hour / 4 hours / 8 hours
- 5 - Dimmer mode: press and hold to dim light
- 6 - **ON / OFF**, power button for light
- 7 - Color mode: change/select light color
 - warm white
 - bright warm white
 - natural white
 - bright white
 - daylight
- 8 - Breeze mode: fan automatically cycles between all 6 different speeds
- 9 - Vacation mode: light kit switches on for 5 minutes every 2 hours



CARE AND MAINTENANCE

At least twice each year, lower canopy (F) to check downrod (C) assembly, and then tighten all screws on fan. Clean motor housing (I) with only a soft brush or lint-free cloth to avoid scratching the finish. Clean blades (J) with a lint-free cloth. You may occasionally apply a light coat of furniture polish to wood blades for added protection.

IMPORTANT: Shut off main power supply before beginning any maintenance. Do not use water or a damp cloth to clean the ceiling fan.

Total wattage for this fan is 20 watts; do not attempt to replace the LEDs.

TROUBLESHOOTING

⚠ WARNING: Before beginning work, shut off the power supply to avoid electrical shock.

PROBLEM	POSSIBLE CAUSE	CORRECTIVE ACTION
Fan does not move.	<ol style="list-style-type: none"> 1. Power is off or fuse is blown. 2. Faulty wire connection. 3. Learning code process between fan and remote control transmitter may not have been successful and learning code was not activated. 4. Blades are not installed. 	<ol style="list-style-type: none"> 1. Turn power on or check fuse. 2. Turn power off. Loosen canopy and check all connections. 3. Turn off power and repeat instructions in Step 2 on page 18. 4. Attach blades to fan.
Noisy operation.	<ol style="list-style-type: none"> 1. Blades are loose. 2. Cracked blade. 3. Fan is new. 	<ol style="list-style-type: none"> 1. Tighten all blade screws. 2. Replace blade. 3. Allow fan a "break in" period of a few days, especially when running the fan at Medium and High speeds.
Excessive wobbling.	<ol style="list-style-type: none"> 1. Blades are loose. 2. Blade arms incorrectly attached. 3. Fan not securely mounted. 4. Fan too close to vaulted ceiling. 5. Set screw(s) on motor assembly yoke is (are) not tightened properly. 6. Set screw on hanging ball is not tightened properly. 	<ol style="list-style-type: none"> 1. Tighten all blade screws/washers. 2. Re-install blade arms. 3. Turn power off. Carefully loosen canopy and verify that mounting bracket is secure. 4. Use a longer downrod or move fan to another location. 5. Tighten yoke set screw(s) securely. 6. Carefully loosen and lower canopy and verify that set screw on hanging ball is tightened securely.
Fan operates but light fails.	<ol style="list-style-type: none"> 1. Wires in canopy not wired properly. 2. Wall switch to fan is off. 3. Wires in LED light kit not wired correctly. 	<ol style="list-style-type: none"> 1. Check wires in canopy and, if necessary, re-wire according to instructions on page 12. 2. Make sure that wall switch to fan is on. 3. Check that moxex connections in LED light kit are connected properly according to instructions on page 16.
Remote control fails to operate.	<ol style="list-style-type: none"> 1. Remote control transmitter not synced with fan. 2. Battery not installed correctly. 3. Battery no longer working. 	<ol style="list-style-type: none"> 1. Refer to instructions in Step 2 on page 18. 2. Check that battery has been installed with correct polarity. 3. Replace battery according to instructions on page 17.

NOTE: A small amount of "wobble" is normal and should not be considered a defect.

LIMITED LIFETIME WARRANTY

Set forth below, the manufacturer warrants the fan motor for this ceiling fan to be free from defects in workmanship and material for the life of the product. Also, subject to the limitations below, the manufacturer warrants all ceiling fan parts ("ceiling fan parts" excludes the motor and parts made in whole or in part with glass) to be free from defects in workmanship and material for a period of one year after the date of purchase by the original purchaser at retail.

All claims must be made by the original purchaser, whether such purchaser purchased the product through a store or contractor. Ceiling fan part defects must be reported within the first year from the date of purchase. Parts made in whole or in part with glass and the finishes of metal and other surfaces are not warranted.

Purchasers are responsible for all costs of removing and reinstalling the product. Any damage to any part caused by ordinary wear and tear, accident, misuse, or improper installation, is not covered by this warranty. The manufacturer assumes no responsibility whatsoever for fan installation. Any service performed by a non-licensed electrician will render the warranty invalid.

The manufacturer's sole responsibility shall be to repair or replace the motor, parts, or product within the terms stated above. The manufacturer shall not be liable for any loss or damage of any kind, including any incidental or consequential damages resulting directly or indirectly, from any breach of warranty, express or implied, or any other failure of this product. Some states do not allow the exclusion or limitation of incidental or consequential damages so this limitation may not apply to you.

If the original purchaser ceases to own the fan, this warranty is voided.

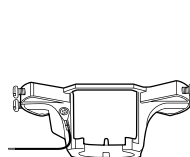
Should the purchaser encounter a problem with your fan related to defects in workmanship or materials within the warranty period associated with the defective part, the manufacturer agrees to replace the defective part without charge, or at its option, to replace the ceiling fan with a comparable or superior model.

The manufacturer's warranties are limited to the written warranties set out in this ceiling fan limited lifetime warranty. All other express and implied warranties, including, without limitation, the implied warranty of fitness for a particular purpose and the implied warranty of merchantability are disclaimed. Some states do not allow the disclaimer of implied warranties, so this disclaimer may not apply to you.

REPLACEMENT PARTS LIST

For replacement parts, call our customer service department at **800-527-1292**, 8:30 a.m. - 5 p.m., CST, Monday - Friday.

		#5519816	#5519821
PART	DESCRIPTION	PART #	PART #
A	Mounting Bracket	5519816-A	5519821-A
C	Downrod	5519816-C	5519821-C
F	Canopy	5519816-F	5519821-F
J	Blade	5519816-J	5519821-J
K	Blade Arm	5519816-K	5519821-K



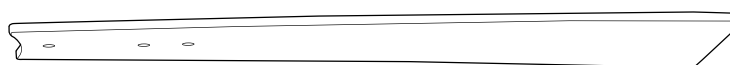
A



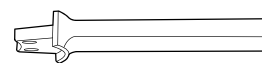
C



F



J



K