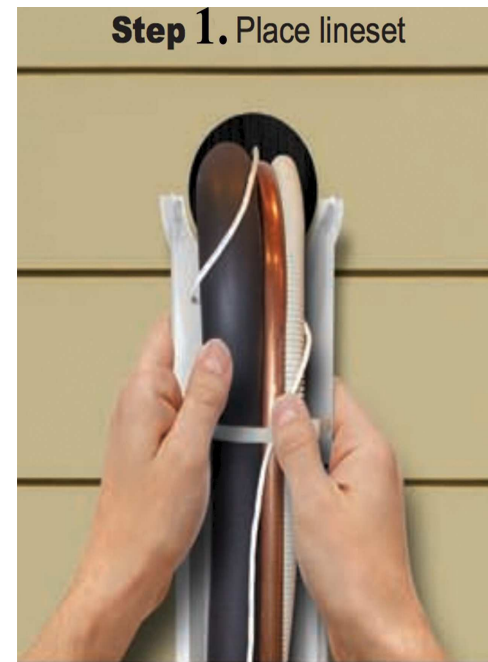
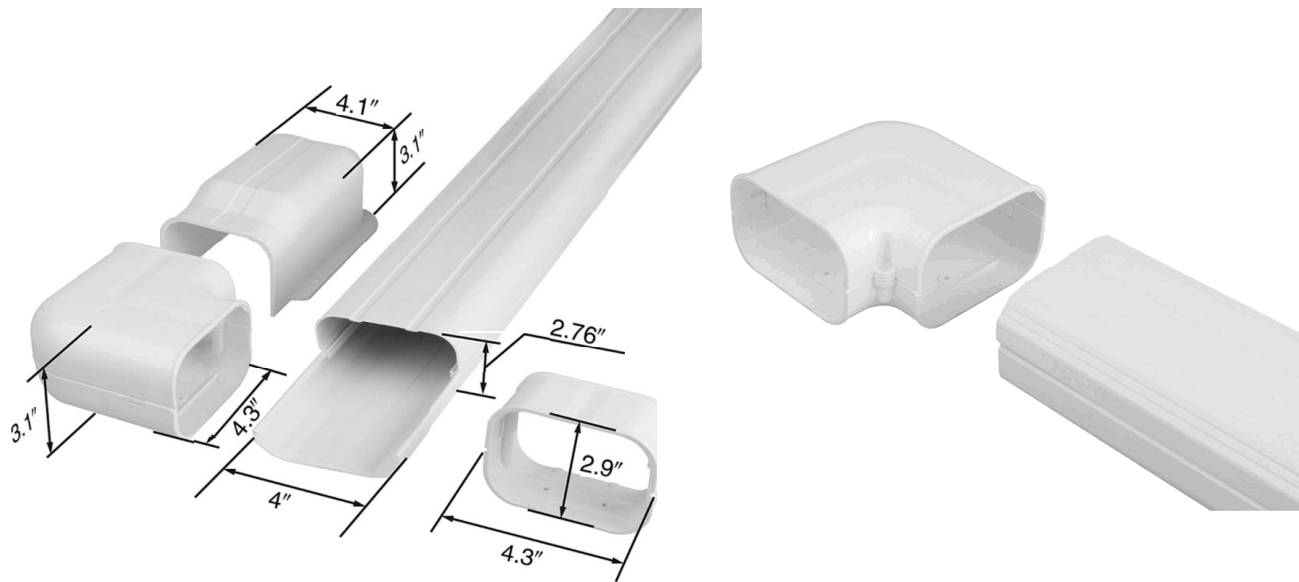


Lineset Cover Installation Instructions

1. Install all lineset wires into the bases and secure them with the clips and ties.
2. Cover the top of the ducting first by pushing it over the base (make sure it clicks in place), then cover all the inlet, unions and elbow by using the included screws



All components can be separate
In the middle of quick installation



We offer elbow to help changing
Direction of exposed Refrigeration
lineset