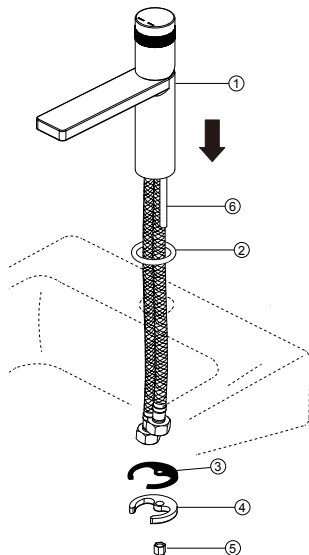


BEFORE INSTALLATION

- To insure proper installation, please read the following instructions carefully.
- Please make sure that the water supply has been shut off at the stop valve.
- EZANDA reserves the right to update product without notice.

If you have any question or need help,
please visit EZANDA website
<http://www.ezanda.com>

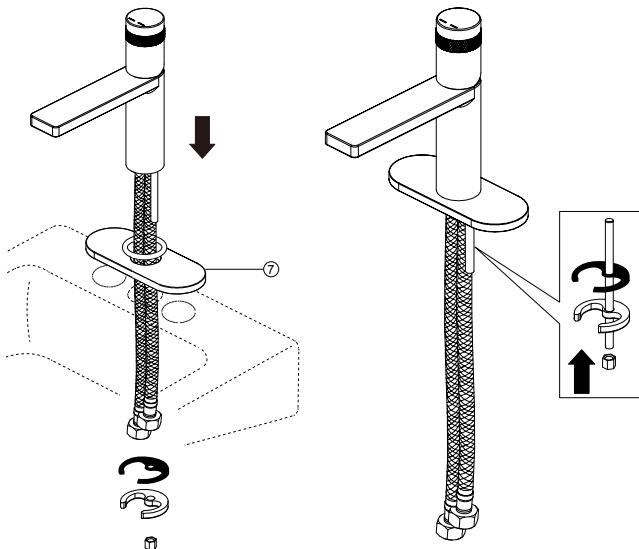
Single Hole Application



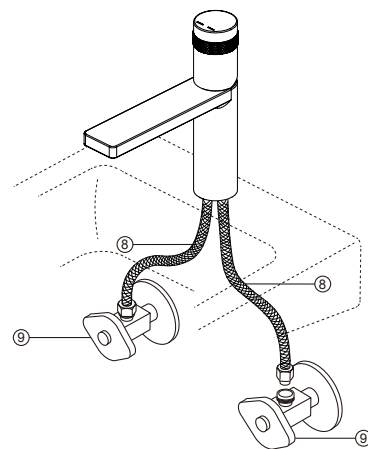
1. Install Gasket (2) onto Faucet Body (1).
Slide single hole faucet through the sink mounting hole.

Note: Escutcheon (7) is included for 3-Hole applications.

3-Hole Application



2. Place Stainless Steel Washer (4) and Rubber Washer (3) onto Mounting Studs (6) under the sink, and tighten the Mounting Nuts (5) securely as shown.



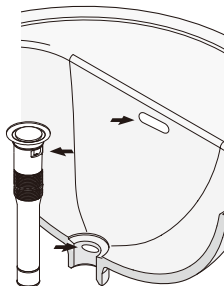
3. Connect and screw on the Supply Hoses (8) to Valves (9).
4. Turn on faucet to check for leaks.

· Every once in a while, please rinse the faucet with lukewarm soapwater , and wipe it clean with a soft duster cloth.
Please avoid any abrasive cleaners, steel wools, or corrosive chemicals.

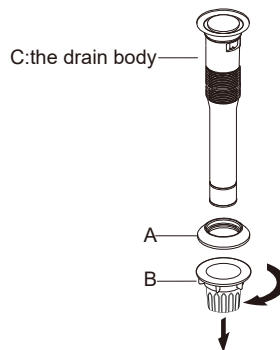


NOTES:

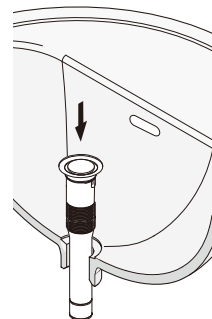
- Fits for sink WITH overflow hole.
- Clean the sink hole, make sure to remove debris.
- Please avoid using plumber's putty. The seal on top is leak-free. Plumber's putty might cause damage.
- Silicone and plumbing tape can be used for sealing requirement.



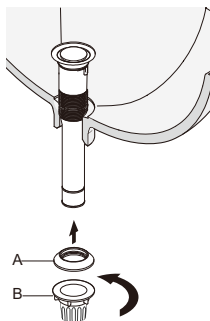
1 Unscrew components A & B to the seal.



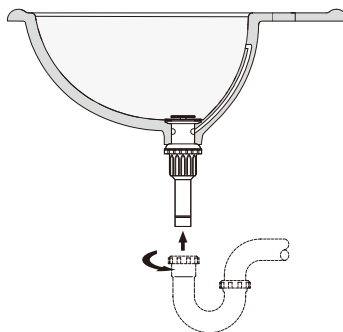
2 Slide the drain body C through the hole in the sink.



3 Screw components A & B back on as shown.



4 Connect the rear end of the drain to the Drain Pipe.



5 Push to activate.

