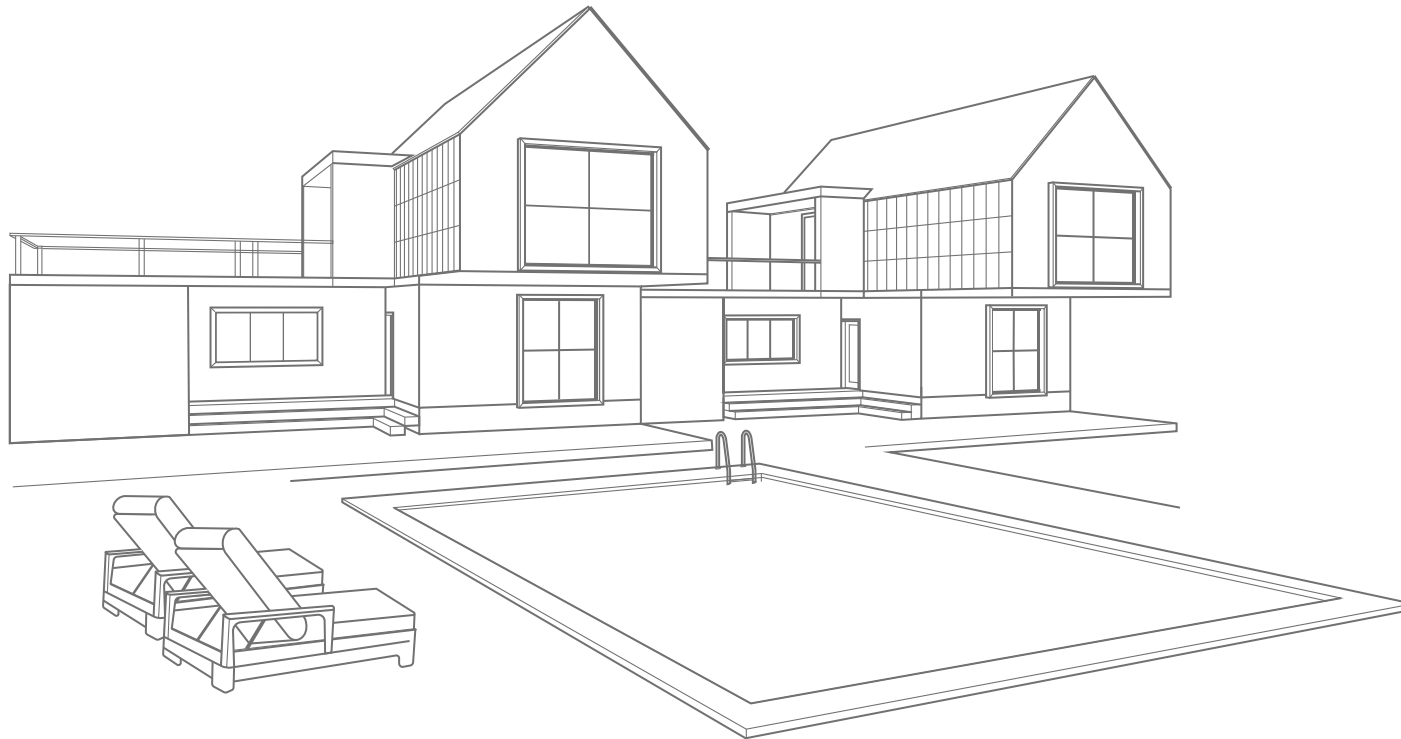


# Dishwasher

Product ID. QTBF2



Scan for Support  
[support@garvee.com](mailto:support@garvee.com)



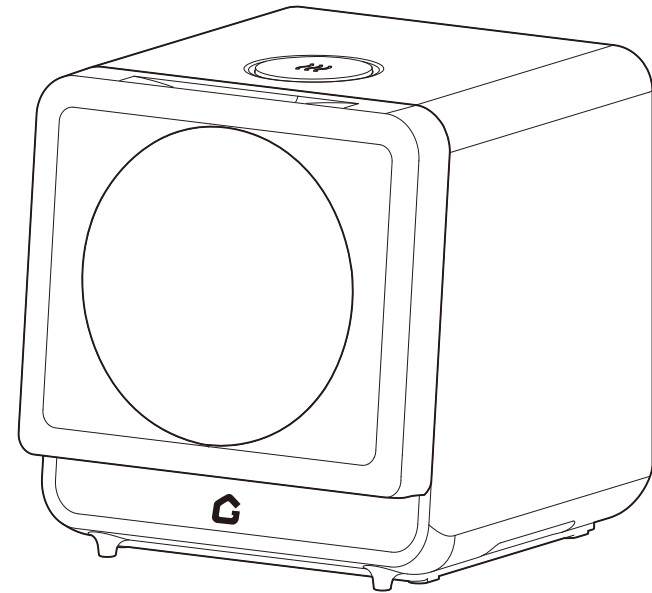
**GARVEE**.com

# DISHWASHER

Product ID : QTBF2/QK2YA/QNMON



Scan for Support



Model: X503-41200/X501-40200/X501-40100  
compony: Garvee Innovation Inc  
Adaress: 4215 E Airport Dr Ontario, CA, USA  
Email: support@garvee.com  
Website: <http://www.garvee.com>

Made in china



Distributed by  
**GARVEE**.com

support@garvee.com

## CONTENT

### Safety Information

|                             |   |
|-----------------------------|---|
| Safety Instructions .....   | 2 |
| Grounding Instruction ..... | 4 |
| Installation .....          | 4 |

### Product Structure

|                             |   |
|-----------------------------|---|
| Parts Identification .....  | 5 |
| Accessories .....           | 5 |
| Technical Information ..... | 6 |

### Installation

|                          |   |
|--------------------------|---|
| Installation Steps ..... | 6 |
|--------------------------|---|

### Operating Instructions

|  |    |
|--|----|
| Checklist .....                                | 8  |
| Control Panel .....                            | 8  |
| Loading the Basket .....                       | 9  |
| Adding Detergent .....                         | 10 |
| Washing Programs Table .....                   | 11 |
| Starting A Wash Program .....                  | 12 |
| Changing the Washing Program .....             | 12 |
| Canceling the Wash Program .....               | 12 |
| End of the Washing Program .....               | 12 |
| Activating or Deactivating Turbo Fan Dry ..... | 13 |
| Forced Emptying of Water Tank .....            | 13 |

### Maintenance and Cleaning

|                               |    |
|-------------------------------|----|
| Cleaning the Filter .....     | 13 |
| Cleaning the Spray Arms ..... | 14 |
| Cleaning the Dishwasher ..... | 14 |
| Error Code .....              | 15 |
| Troubleshooting .....         | 16 |

## Safety Information



For your safety, the information detailed in this manual should be followed.

Improper use/ handling can cause serious damage to the appliance and/or to the user, including but not limited to fire , explosion , electric shock , resulting in personal injury or death .

- This appliance is intended to be used in household.
- Use the dishwasher only for its intended function.
- The dishwasher will be damaged or the user will be injured when the operation is wrong.
- Please contact the after-sales service department immediately if the appliance breaks down. Do not reassembly or fix the appliance by yourself.
- Disconnect the power cord at stormy.
- This dishwasher is an automatic appliance, do not add water manually when the appliance is working. It will cause overflow and dangerous .
- Do not move or clean appliance when it is working. It might cause electrical or water leakage.
- Do not open the door during operation as the steam will hurt you. If it is necessary to load or unload some utensils, please push pause button and wait 10 seconds, then open the door slightly and wait for the steam dissipate completely, then open the door and move your utensils.
- Use only detergent and rinse additives designed for an automatic dishwasher.
- Never use soap , laundry detergent , or hand washing detergent in your dishwasher. Keep these products out of the reach of children .
- Keep children away from detergent and rinse aid , keep children away from the open door of the dishwasher, there could still be some detergent left inside.
- Dishwasher detergents are strongly alkaline, they can be extremely dangerous if swallowed. Avoid contact with skin and eyes and keep children away from the dishwasher when the door is open.
- Do not try to use this appliance in damp place. High humidity will make the appliance rust , even leakage .
- Utensils will be hot after washing, please take it out after 30 minutes.

- Please keep the appliance at room temperature for 8 hours after receiving the product in winter, to avoid the droplets appearing on the surface of the glass, and it may damage the appliance.
- Use new set of hoses to connect this appliance to the water mains. Do not reuse old hose sets.
- During installation, the power supply must not be excessively or dangerously bent or flattened.
- After installation, please make sure the connection of water and power well connected before using.
- The installation position of drainage pipe could not exceed the top of the appliance, which will cause poor drainage, electrical leakage and water leakage.
- Position the appliance in the desired location. Confirm that the machine has been leveled.
- Please don't put anything else on either side, The openings must not be obstructed by a carpet.
- Please use cold water or warm water not exceeding 50°C.
- This appliance is not intended for use by persons (including children) with reduced physical, sensory or mental capabilities, or lack of experience and knowledge, unless they have been given supervision or instruction concerning use of the appliance by a person responsible for their safety. Children should be supervised to ensure that they do not play with the appliance.
- If the supply cord is damaged, it must be replaced by the manufacturer or its service agent or similarly qualified persons in order to avoid a hazard.
- The door should not be left in the open position since this could present a tripping hazard.
- Please keep kids stay away from the dishwasher, especially when the door open.
- After using the appliance, please cut off the power and water.
- **WARNING:** Knives and other utensils with sharp points must be loaded in the basket with their points down or placed in a horizontal position.
- **WARNING :** When using your dishwasher, follow basic precautions, including the following:
  - a) Read all instructions before using the dishwasher.
  - b) Use the dishwasher only for its intended function.
  - c) Use only detergents or wetting agents recommended for use in a dishwasher and keep them out of the reach of children.
  - d) When loading items to be washed :
    - 1) Locate sharp items so that they are not likely to damage the door seal;
    - 2) Load sharp knives with the handles up to reduce the risk of cut-type injuries.
  - e) Do not wash plastic items unless they are marked 'dishwasher safe' or the equivalent. For plastic items not so marked, check the manufacturer's recommendations.
  - f) Do not operate your dishwasher unless all enclosure panels are properly in place.

- g) Do not tamper with controls.
- h) Do not abuse, sit on, or stand on the door or dish rack of the dishwasher.
- i) To reduce the risk of injury, do not allow children to play with the appliance.
- j) Remove the door when removing an old dishwasher from service or discarding it.



## Grounding instruction

- This appliance must be grounded. In the event of a malfunction or breakdown, grounding will reduce the risk of electric shock by providing a path of least resistance of electric current. This appliance is equipped with a cord having an equipment-grounding conductor and a grounding plug.
- The plug must be plugged into an appropriate outlet that is installed and grounded in accordance with local codes and ordinances.
- Improper connection of the equipment-grounding conductor can result in a risk of electric shock.
- Check with a qualified electrician or service representative if you are in doubt whether the appliance is properly grounded. Do not modify the plug provided with the appliance; if it does not fit the outlet, have a proper outlet installed by a qualified electrician.
- Please do not use power strip.

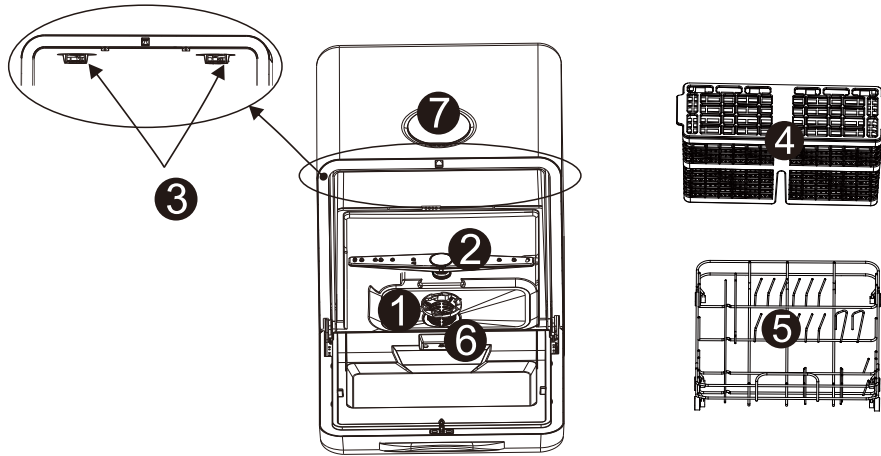
## Installation

- a) The power-supply receptacle for the appliance shall be installed in a cabinet or on a wall adjacent to the undercounter space in which the appliance is to be installed;
- b) There shall be an opening through the partition between the compartments specified in (a) that is large enough for the attachment plug to pass through. The longest dimension of the opening shall not be more than 38 mm (1.5 in);
- c) The edges of the opening specified in (b) shall, if the partition is wood, be smooth and rounded, or, if the partition is metal, be covered with an edge protector provided for this purpose by the manufacturer; and
- d) Care shall be exercised, when the appliance is installed or removed, to reduce the likelihood of damage to the power-supply cord. Caution: A hose that attaches to a sink spray can burst if it is installed on the same water line as the dishwasher. If your sink has one, it is recommended that the hose be disconnected and the hole plugged.
- f) The temperature of hot water connected to the inlet pipe should not exceed 120 °F

*READ AND FOLLOW THIS SAFETY INFORMATION CAREFULLY  
SAVE THESE INSTRUCTIONS*

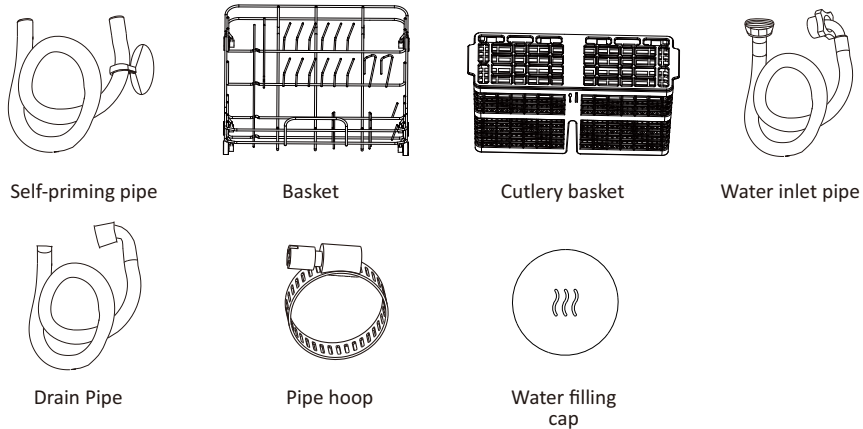
# Product Structure

## Parts Identification



- 1 Filter assembled
- 2 Lower spray arm
- 3 Upper spray arms
- 4 Cutlery basket
- 5 Basket
- 6 Detergent addition location
- 7 Water tank filling port

## Accessories



# Technical Information

|                |                          |
|----------------|--------------------------|
| Voltage        | 120V                     |
| Power          | 1000W                    |
| Frequency      | 60Hz                     |
| Dimension(in)  | W16.93 x D17.72 x H18.11 |
| Capacity       | 2 settings               |
| Water pressure | 5.8-145PSI               |

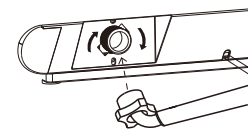
## Installation

### Before installation

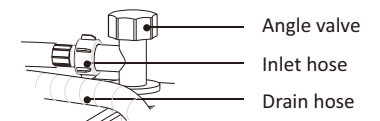
1. Remove all packaging of the machine and accessories.
2. This dishwasher is designed for counter-top installation. The dishwasher is equipped with water supply and drain hoses that can be positioned to the right or the left to facilitate proper installation. Make sure water supply/faucet connection is within reach of the inlet and drain hose assembly (47.24in) . Make sure the electrical outlet is within reach of the power supply cord ( 47.24in)
3. The dishwasher should be installed on a level and flat table, otherwise it may affect the safety of use.

### Installation steps

#### 1.Connecting inlet hose

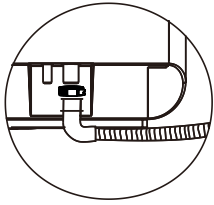


Connect inlet hose to inlet valve

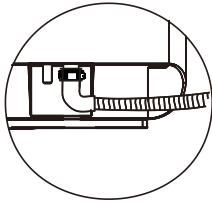


Connect another side of inlet hose to angel valve

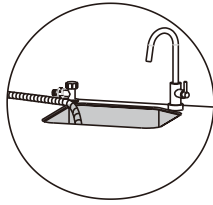
## 2. Connecting drain hose



Connect drain hose to connector



Fixed drain hose by the clamping band



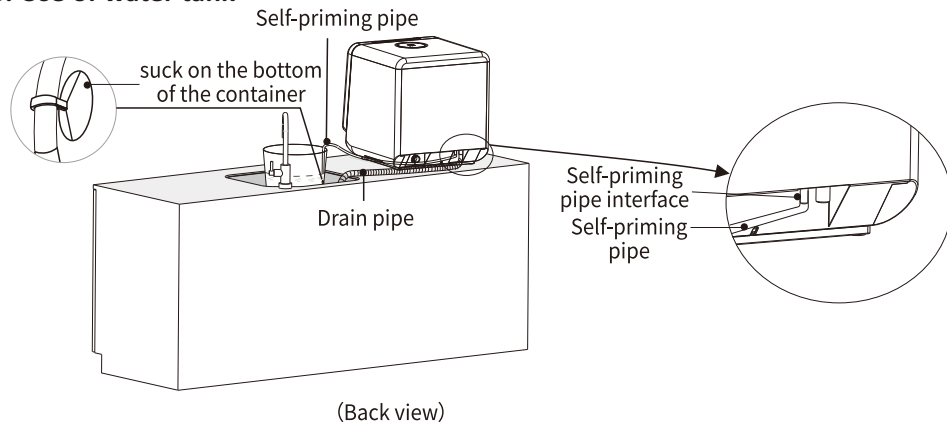
Put the end of drain hose into sink

**Warning:** Do not connect the power until the dishwasher is installed , otherwise there may be a risk of electric shock .

**Notes:**

1. The inlet hose and drain hose can not be folded , or may affect the washing.
2. Make sure all the connector is tightened and no water leakage.

## 3. Use of water tank



- ① Before connecting the self-priming pipe, please confirm that the self-priming pipe is intact, otherwise it may affect the self-priming function;
- ② Find the self-priming pipe interface on the back of the machine, insert the end (without suction cup end) into the self-priming pipe interface, immerse the another end (suction cup end) in the clean water container, and attach the suction cup to the container firmly to prevent the self-priming pipe from floating up, resulting in water shortage failure;
- ③ After the installation is completed, after the program starts, the machine will automatically absorb water from the water container.

## 4. Connecting power supply

The plug must be plugged into an appropriate outlet that is installed and grounded in accordance with all local codes and ordinances .

DO NOT use an extension cord or an adapter plug with this appliance.

DO NOT, under any circumstances , cut or remove the ground-prong.

Improper connection of the connection of the equipment grounding conductor can result in electric shock.

Check with a qualified electrician or service representative if you are in doubt whether the appliance is properly grounded.

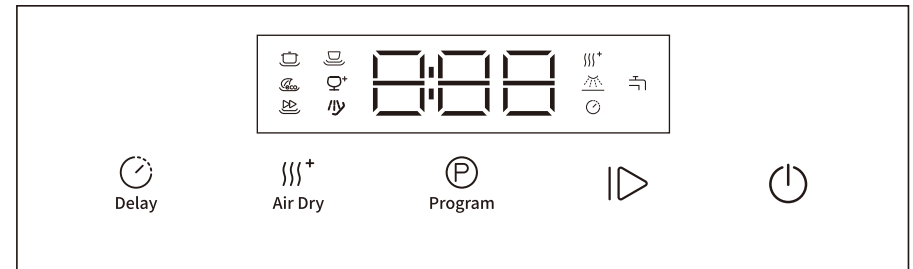
# Operating Instructions

## Checklist

After installation, please check the following before using the dishwasher:

- The dishwasher is level and secured ;
- The faucet is turned on , and there is no water leakage at the connection of each water pipe;
- The power plug is connected to a grounded outlet ;
- Power is turned on;
- There are no kinks in the drain and inlet hoses;
- All packing and printed materials and accessories have been removed from the dishwasher.

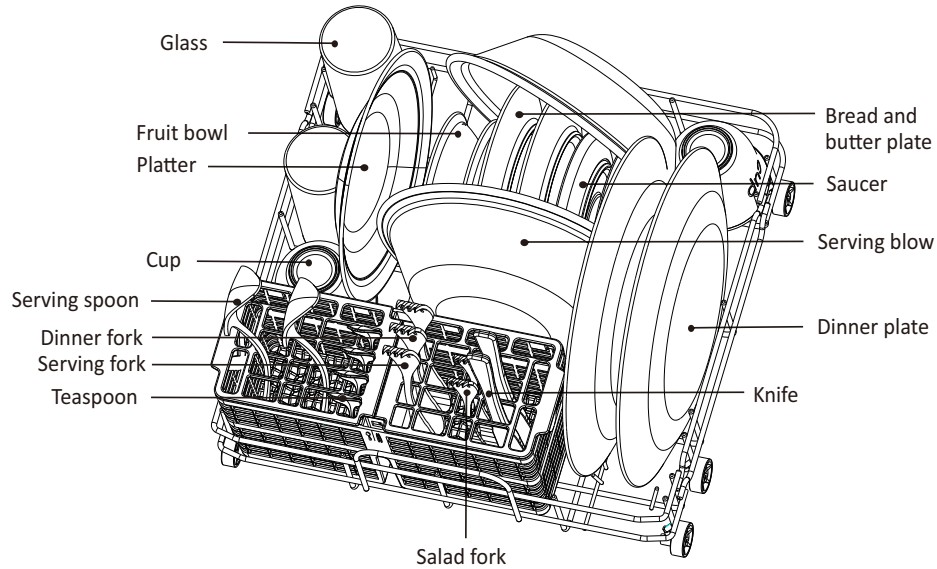
## Control panel



| Icon            | Description  |
|-----------------|--|
| Power           | Power on/off dishwasher,press it for 3S to power off during working  |
| Start/Pause     | Start/pause program  |
| Program         | Select washing programs  |
| Air Dry         | After washing program,the Turbo fan will work for 30min of each 4h,to keep fresh air inside  |
| Delay           | Delay program  |
| Water indicator | When the indicator is light on,means that the water intake is not enough,there may be no water in the water source, or the flowmeter may be faulty |

## Loading the basket

A properly loaded dishwasher is key for optimal performance. Never overfill the dishwasher as it can reduce the unit's efficiency. Improper placement of items can also affect the dishwasher's performance. Position the dishes and utensils so they are secure during the wash cycle and will not be moved by sprayed water.



Rated Max. capacity: 2 places setting.

| Item         | Qty | Item          | Qty | Item                   | Qty |
|--------------|-----|---------------|-----|------------------------|-----|
| Cup          | 2   | Dinner fork   | 2   | Serving bowl           | 2   |
| Fruit bowl   | 2   | Salad fork    | 2   | Saucer                 | 2   |
| Glass        | 2   | Teaspoon      | 4   | Bread and butter plate | 2   |
| Knife        | 2   | Dinner plate  | 2   | Platter                | 1   |
| Serving fork | 1   | Serving spoon | 2   |                        |     |

## Tableware suitable for dishwasher



Ceramic tableware

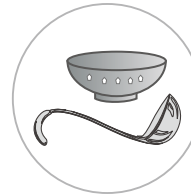


Glass tableware

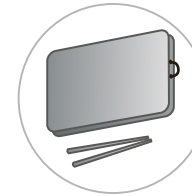


Stainless steel tableware

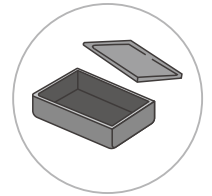
## Tableware not suitable for dishwasher



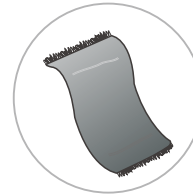
Silver and aluminum items and glazed items



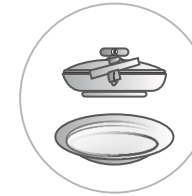
Bamboo and wooden items



Plastic items



Synthetic fibers



Cast iron items

1. Silver and aluminum items , tends to discolor after washing, Glazed patterns may fade.
2. Bamboo and wooden items, may deform and crack after washing.
3. Plastic items that are not heat resistant.
4. Synthetic fibers, such as cleaning cloth.
5. Cast iron, may rust after washing.

## For best performance

Scrape off food particles before loading.

Soften remnants of burnt food in pans.

Place cups, glasses, pots/ pans face down.

Curved items , or those with recesses , should be loaded at a slant so water can run off.

Allow sufficient space between items to allow water and detergent to reach each surface.

Ensure glasses and stemware are secure and balanced.

Ensure breakable items are not sitting on metal cutlery which can chip the dishes.

Do not overload the dishwasher.

## Notes:

Flip the spray arm after loading, to check if the spray arm still can be rotates .

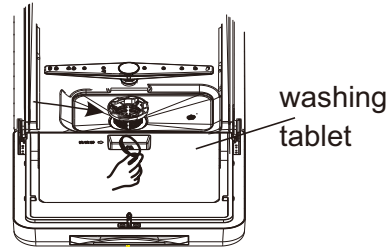
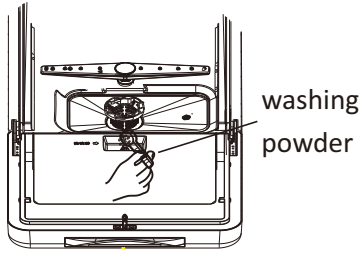
WARNING: Knives and other utensils with sharp points must be loaded in the basket with their points down or placed in a horizontal position .

## Adding the detergent

Add required amount of detergent after loading tableware, please use only detergent specifically made for dishwasher.

Detergent tablets of different brands dissolve at different speeds. For this reason, some tablets cannot

dissolve and develop their full cleaning power during short programs. If using a detergent tablet , please select a long program to ensure complete removal of detergent residuals.



## Washing program table

| Program   | Running time (h:m) | Detergent (g) | Rinse add time (h:m) | Max temperature (°F) | Water (L) | Energy (kw.h) | Cycle selection information  |
|-----------|--------------------|---------------|----------------------|----------------------|-----------|---------------|--|
| Intensive | 1:49               | 10            | 0:10                 | 167                  | 4.5       | 0.490         | For the heaviest soiled loads tableware that have been sitting with dried food on them for a while |
| ECO       | 1:00               | 10            | 0:10                 | 162                  | 4.5       | 0.438         | It is suitable for tableware without dry knot, sticky stain residue and short time storage         |
| Rapid     | 0:35               | 10            | 0:10                 | 162                  | 4.5       | 0.425         | For lightly and normally soiled plates for everyday  |
| Normal    | 3:25               | 10            | 1:48                 | 131                  | 4.5       | 0.315         | For normally soiled loads tableware, standard daily cycle  |
| Glass     | 1:10               | 10            | 0:10                 | 140                  | 4.5       | 0.465         | For glass tableware  |
| Rinse     | 0:25               | 10            | —                    | —                    | 4.5       | 0.100         | For non-greasy dishes that just need to be rinsed  |
| 4H Drying | 4:00               | —             | —                    | —                    | —         | —             | Suitable for washing dishes  |

### Notes:

Please don't overuse the detergent. Excessive detergent will not only produce a lot of bubbles, but also affect the cleaning effect.

Please choose the suitable washing tablet.

The actual running time of each program is possibly different from the preset time cycle due to the water temperature, the amount of utensils, the type of soiling and the recovery of water softening. It is a normal condition, please use it with confidence.

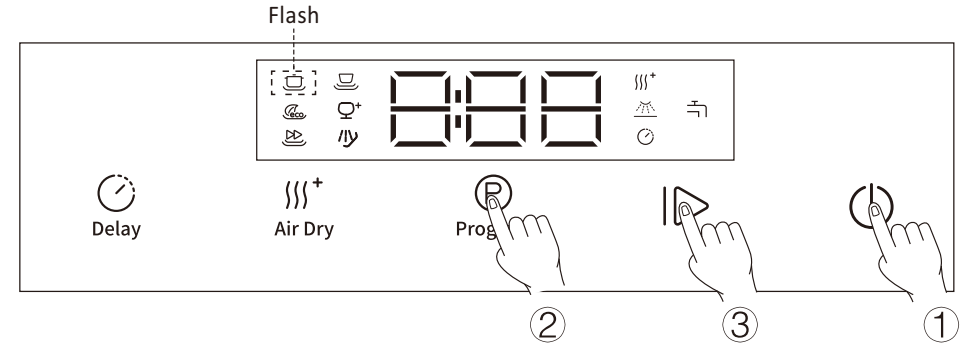
If want to reach a cleaning and drying performance, by adding rinse aid , when the program runs to the "Rinse aid time" corresponding to each program, pause the dishwasher and put 5ml rinse aid into the inner tank, then close the door and continue to run the program.

( For example, " Intensive" ,when the display shows 0:10, please pause the dishwasher, put rinse aid into the inner tank , and then continue to run) . For turbo fan drying , it will work after program finished.

## Starting a washing program

Once the dishwasher is loaded, follow these steps to start washing program

1. Ensure the dishwasher is properly connected to power supply.
2. Ensure the water supply is properly connected.
3. Add detergent.
4. Close the door and press the POWER button to turn on the dishwasher.
5. Press the PROGRAM button to select desired program.
6. Press the START/ PAUSE button to begin the wash cycle .



### Notes:

1. When press PROGRAM button to select the program, the program indicator which be selected will flash , others are light on , after starting, the indicator of selected program is light on , others are light off.
2. DO NOT open the door during washing , hot water may be sprayed out.
3. If want to open the door during the appliance working, please press START/ PAUSE button first, a buzzer will sound and the dishwasher stop working, then open the door, after door is closed , press START/ PAUSE button to resume program.

## Changing the wash program

Press START/ PAUSE button to pause, then press and hold the START/ PAUSE button for three seconds or more and unit will be in stand-by state . The program can be changed at this point.

## Canceling the wash program

Press START/ PAUSE button to pause, then press and hold the START/ PAUSE button for three seconds or more and unit will be in stand-by state.

Or press and hold the POWER button for 3s to turn off the appliance to cancel program.

## End of the wash program

When wash cycle has finished, the dishwasher will buzz for 6 seconds .  
Dishes are still hot after washing finished, could open the door a jar for a few minutes to help for drying and cooling.

## Activating or deactivating turbo fan dry

After program is finished, turbo fan also can help for drying and storage , if want to storage dishes in the dishwasher.

In standby state , press  $\{\}\{\}\{^+$  to activate it .  
Or In standby state , press  $\{\}\{\}\{^+$  to deactivate it .

Notes:

1. It is deactivated by factory default.
2. The drying time can last for 83H , the fan will continue work in first 3H , then work 0.5h and stop for 3.5h in rest 80H , then stop.
3. This function need to be activated or deactivated by manual.

## Maintenance and Cleaning

The filter system prevents large remnants of food or other objects from getting inside the pump . It is recommended to clean the filter system after every using.

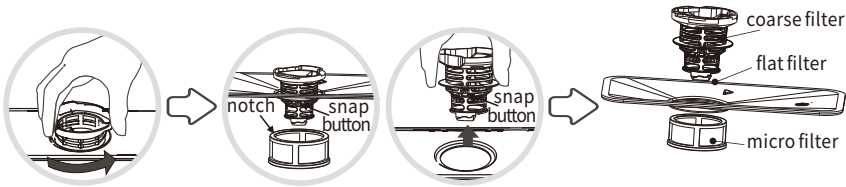
### Remove the Filters

Make sure the power if off.

Turn the filter assembly counter-clockwise and lift to remove entire assembly.

Remove micro filter.

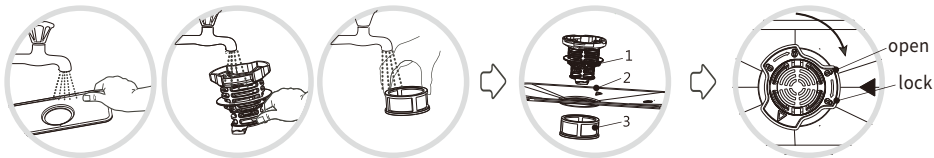
Remove coarse filter from flat filter.



### Cleaning the Filters and Installing

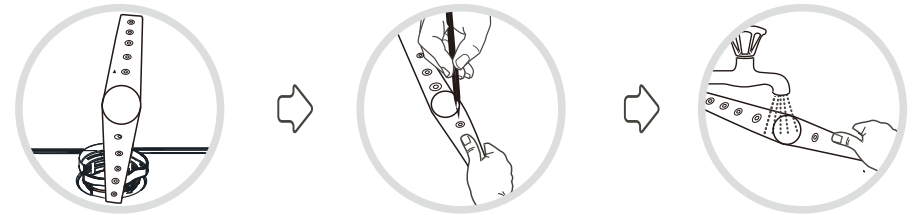
Rinse filter, clean it with a soft cloth or brush, do not use a hard brush to avoid damage and cause rust.

Reassemble in reverse order, make sure filter is proper seated.



## Cleaning the Spray arm

Take out the spray arm  
Clean blockages by using a thin wire  
Rinse it and install it back



## Cleaning the Dishwasher

The exterior can be cleaned by using a slightly dampened cloth . Dry thoroughly with a soft towel .  
To avoid penetration of water into the door lock and electrical components , do not use spray cleaner of any kind.

After using for a while , scales may occur in the cavity, basket and tableware because of the high hardness of water, could use the descaling detergent like citric acid to remove it.

## Error Code

| Code | Cause               | Solution  |
|------|---------------------|---|
| E5   | Water inlet failure | 1. check whether the tap turn on or not<br>2. Check whether water inlet pipe is bent or not<br>3. Please contact after-service department   |
| E6   | Water pump failure  | 1. Please check if the water tank is full<br>2. Restart the dishwasher again<br>3. Please contact the after-sales service   |
| E7   | Overflow            | 1. Check whether the drain pipe is hanging too high or not.<br>2. Check whether the drain pipe is knotted, or the drain pipe is blocked or pressed by heavy objects<br>3. Please contact after-service department |
| E8   | Heating element     | Please contact after-service department   |
| E9   | Connect wire        | Please contact after-service department   |
| E9   | Control panel       | Please contact after-service department   |

## Troubleshooting

Review the troubleshooting guide below to resolve common issues.

| Issue  | Possible cause  | Solution   |
|--|---|--|
| Tableware are not cleaned                        | Dishes were not properly loaded   | Reload dishes properly.  |
|  | Selected wash program was not powerful enough                                   | Select a more intensive wash program   |
|  | Some food residues are sticking on the dishes                                   | Remove large residues before loading   |
|  | Not enough detergent  | Use the correct dosage detergent   |
|  | Items are blocking the path of the spray arm or installed incorrectly           | Rearrange items so the spray arm can fully rotate/ check installation  |
|  | The filter are dirty/clogged or installed incorrectly                           | Clean the filter or check installation   |
|  | Some food residues are hard to cleaned up                                       | Choose the Intensive program; soak dishes before washing   |
|  | Some spray arm holes are blocked  | Clean the holes and install spray arm correctly  |
| White film /spots on dishwasher interior surface | Power off during working  | Re- running the washing program  |
|  | Hard water minerals   | Clean the interior with a damp sponge and dishwasher detergent and wear rubber gloves. Never use any other cleaner for risk of foaming or suds . |
|  | Wash tablet is used in Rapid/ rinse program, and it is not dissolved completely | Do not use any detergent for Rinse program; Do not use detergent tablet for Rapid program  |
|  | Too much detergent  | Use less detergent   |

| Issue  | Possible cause  | Solution   |
|--|---|--|
| Tableware are not dry  | Water droplet from top  | It is normal for a small amount of water drop from top as the plastic cavity is not dry                                  |
|  | No rinse aid added  | Follow the instruction to add rinse aid to reach better drying performance   |
|  | Improper loading  | Load tableware properly  |
|  | Short drying time after washing program   | The turbo fan drying function starts work after washing program finished. Keep dishes in dishwasher for long time to dry |
|  | Some tableware like made in wooden and plastic are not suitable for dishwasher  | Need more time to dry  |
|  | Heating element failure affects drying performance  | Call after-sales service   |
|  | Tips: After washing , could open the door to dry fast<br>But please be careful when open the door, there may high temperature steam |  |
|  | Suds in cavity  | Improper detergent   |
| Improper time and amount of rinse aid adding                                     |   | Add rinse aid as instruction   |
| Wash tablet is used in Rapid/ rinse program , and it is not dissolved completely |   | Do not use any detergent for Rinse program; Do not use detergent tablet for Rapid program                                |
| Buttons don't work of control panel  | Power supply is not turn on   | Make sure dishwasher is turned on and door is closed securely. Make sure the power is properly connected                 |
|  | Door is not properly closed   | Close the door properly  |
|  | Sensor switch of door failure   | Call after-sales service   |
|  | Control panel failure   | Call after-sales service   |

| Issue                         | Possible cause                                | Solution  |
|-------------------------------|---|---|
| A lot of water in cavity      | Drain pump failure                            | Call after-sales service  |
|                               | Water inlet failure                           | Call after-sales service  |
|                               | Drain hose is bent or clogged                 | Check the drain hose  |
|                               | Drain hose is hanged too high                 | Reinstall the drain hose according to installation                    |
|                               | Washing program is not finished               | Running the program to finish   |
| Knocking noise during washing | Spray arm is knocking against items in basket | Pause the program and rearrange items which obstructing the spray arm |
| Whirring sound during drying  | It is from working turbo fan                  | It is normal  |