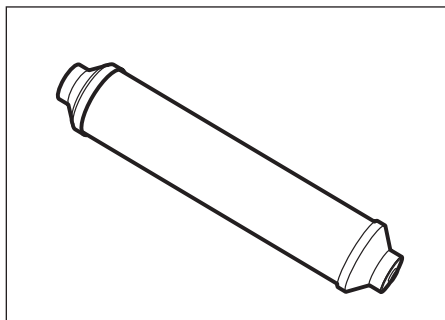




13845 Bishops Dr. | Suite 200 | Brookfield, WI 53005  
Phone: 800.279.9404 | pentair.com



## R200 REFRIGERATOR WATER FILTER INSTALLATION INSTRUCTIONS

### OPERATING SPECIFICATIONS

Pressure Range:	25-125 psi
Temperature Range:	40 – 100°F
Capacity:	3,900 gallons*
Rating:	15 microns* (nominal)

\*Not performance tested or certified by NSF.

#### Tools and Fittings Required

- Pencil
- File
- 1/4-inch plastic or copper tubing
- Utility knife (for plastic tubing)
- Safety glasses
- Pipe cutter or hacksaw (copper tubing only)

#### Optional Materials

- Shut-off valve
- Fittings

### PRECAUTIONS

Carefully read and follow instructions.

**⚠ WARNING** Do not use with water that is microbiologically unsafe, or of unknown quality without adequate disinfection before or after the system.

#### **⚠ WARNING** California Proposition

**65 Warning:** This product contains chemicals known to the State of California to cause cancer or birth defects or other reproductive harm.

**CAUTION** Filter must be protected against freezing, which can cause cracking of the filter and water leakage.

### NOTES:

- For cold water use only.
- The contaminants or other substances removed or reduced by this water treatment device are not necessarily in your water. Ask your local water municipality for a copy of their water analysis, or have your water tested by a reputable water testing lab.
- Filter cartridge life varies depending on filter type, usage, and water conditions.
- Changes in taste, odor, or flow of the water being filtered indicate that the cartridge should be replaced.
- This installation must comply with all applicable state and local regulations.
- After prolonged periods of non-use, such as a vacation, it is recommended that the system be flushed thoroughly. Let water run for 5-6 minutes before using.
- An activated carbon cartridge may contain a small amount of carbon fines (very fine black powder). A new cartridge, after installation, should be flushed with sufficient water to remove the fines before using the water.
- Wear safety glasses during installation.

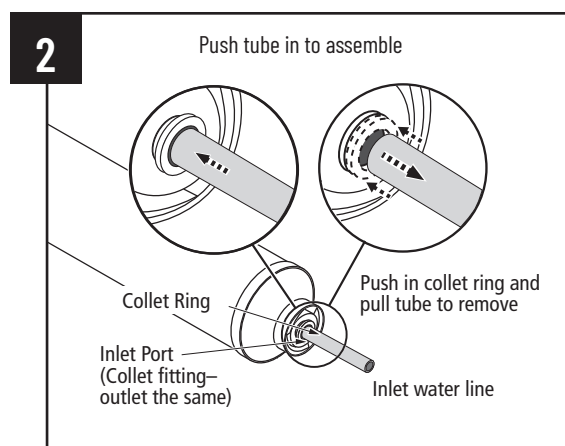
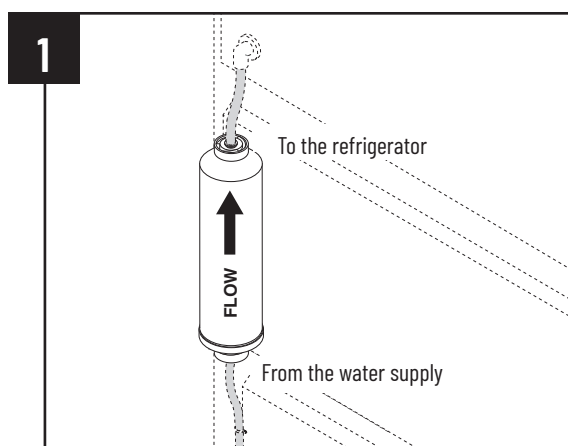
## INSTALLATION INSTRUCTIONS

The system and installation must comply with all state and local laws and regulations.

1. Turn off the cold water supply.
2. Locate an easily accessible section of tubing between the shut off valve and the refrigerator. Use an 8-foot coil (3 coils, approximately 10-inch diameter) of plastic or copper tubing between the outlet of the filter and the refrigerator. Determine the length of plastic or copper tubing needed to connect the inlet and outlet of filter. Leave a minimum of 2-inches of pipe after shut-off valve in case pipe must be re-cut at a later time. Deburr ends of remaining pipe with a file.
3. Cut tubing using a tube cutter - smooth out the sharp edges of the cut tubing with a file or steel wool. Do not cut tubing on an angle. Tubing cut on an angle may leak during service.  
**NOTICE:** Install the unit with the directional arrow in line with the water flow. See Figure 1.
4. Insert supply side tubing (1/4-inch copper or plastic tube) into the end of filter on the supply side. Push firmly until the tubing bottoms out (approximately 5/8-inch).
5. Turn the water supply on. Hold the filter over a bucket and flush until water runs clear. **TURN THE WATER OFF.**
6. Repeat Step 4 on the refrigerator side of the filter. Make sure the tubing is firmly pushed to the bottom of the fitting.
7. Turn the water supply back on and check for any leaks.

## FILTER CARTRIDGE REPLACEMENT

1. Turn off the cold water supply to the filter.
  2. Remove the tubing from the ends of the unit. See Figure 2.
  3. If tubing ends are rough or deeply scratched, repeat Step 3 under "Installation Instructions."
  4. Install the new filter. Refer to Steps 4 through 7 under "Installation Instructions."
- NOTICE:** Be sure unit is installed in the direction as shown in Figure 1.



For Pentair Product Warranties visit: [Pentair.com/assets/residential-filtration-warranty](https://Pentair.com/assets/residential-filtration-warranty)



13845 BISHOPS DR., SUITE 200, BROOKFIELD, WI 53005 U.S.A.  
P. 262.238.400 | CUSTOMER SERVICE: 800.279.9404 | tech-support@pentair.com | pentair.com

© 2022 Pentair. All rights reserved. All indicated Pentair trademarks and logos are property of Pentair.  
Third party registered and unregistered trademarks and logos are the property of their respective owners.

4006760 Rev A AU22