

allen + roth®

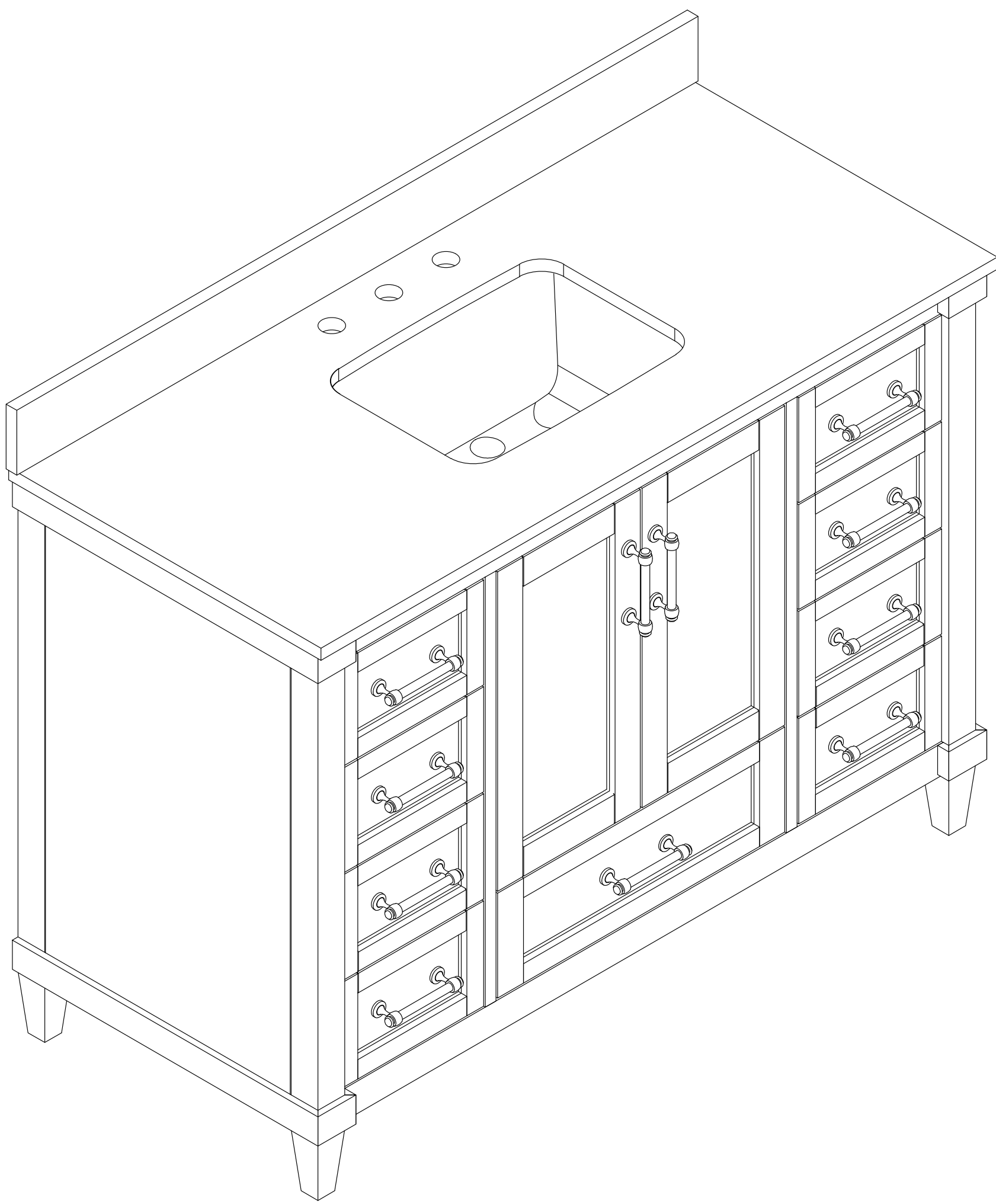
ALLEN + ROTH and logo design are trademarks or registered trademarks of LF, LLC. All rights reserved.

ITEM #6245682

MODEL #TJ02-08V4822WH

**48 IN REYNOLDS  
VANITY WITH TOP**

**ATTACH YOUR RECEIPT HERE**



**Serial Number** \_\_\_\_\_

**Purchase Date** \_\_\_\_\_

Thank you for purchasing this ALLEN + ROTH product.  
Questions, problems, missing parts?  
Before returning, contact us on:  
**866-439-9800**, 8 a.m. - 8 p.m., EST, Monday-Sunday or **ascs@lowes.com**.

# TABLE OF CONTENTS

---

Package Contents.....3

Safety Instruction.....3

Preparation.....4

Assembly Instructions.....4

Care and Maintenance.....12

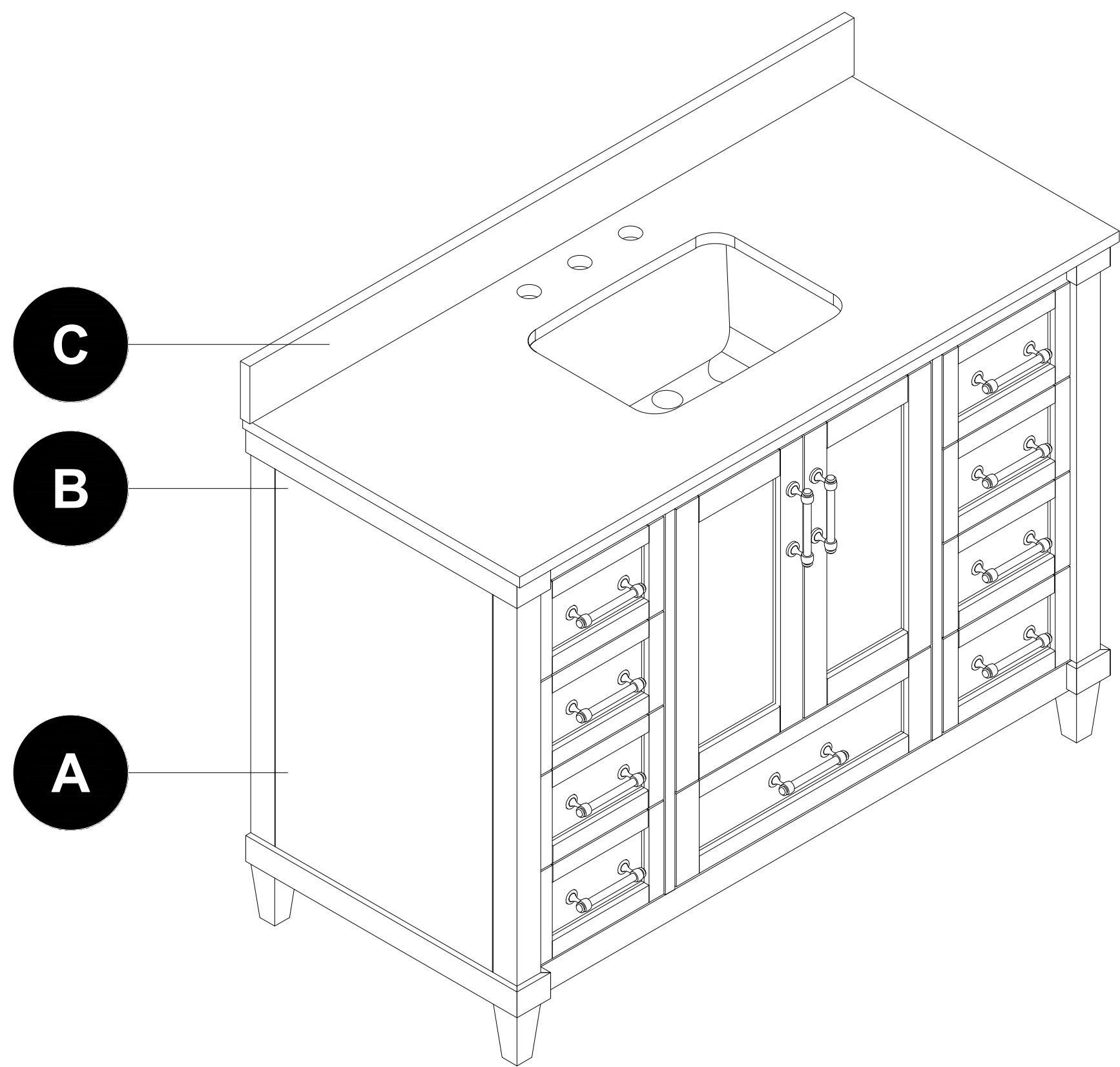
Troubleshooting.....12

Warranty.....12

Replacement Parts List.....13

# PACKAGE CONTENTS

---



PART DESCRIPTION QUANTITY		
A	Vanity	1
B	Vanity top	1
C	Backsplash	1

## SAFETY INSTRUCTION

---

Please read and understand this entire manual before attempting to assemble, operate or install the product.

## WARNING

- Unpacking requires two adults and several steps are more easily handled with two adults.

## CAUTION

- **DO NOT** try to pry off top from vanity, as damage to top or vanity may occur.
- Follow these instructions closely, take your time, and use care while assembling this vanity.

**KEEP THESE INSTRUCTIONS FOR FUTURE REFERENCE.**

## PREPARATION

Before beginning assembly of product, make sure all parts are present. Compare parts with package contents list and hardware contents list. If any part is missing or damaged, do not attempt to assemble the product.

**Estimated Installation Time:** 30-35 minutes (24 hours for silicone caulk to dry).

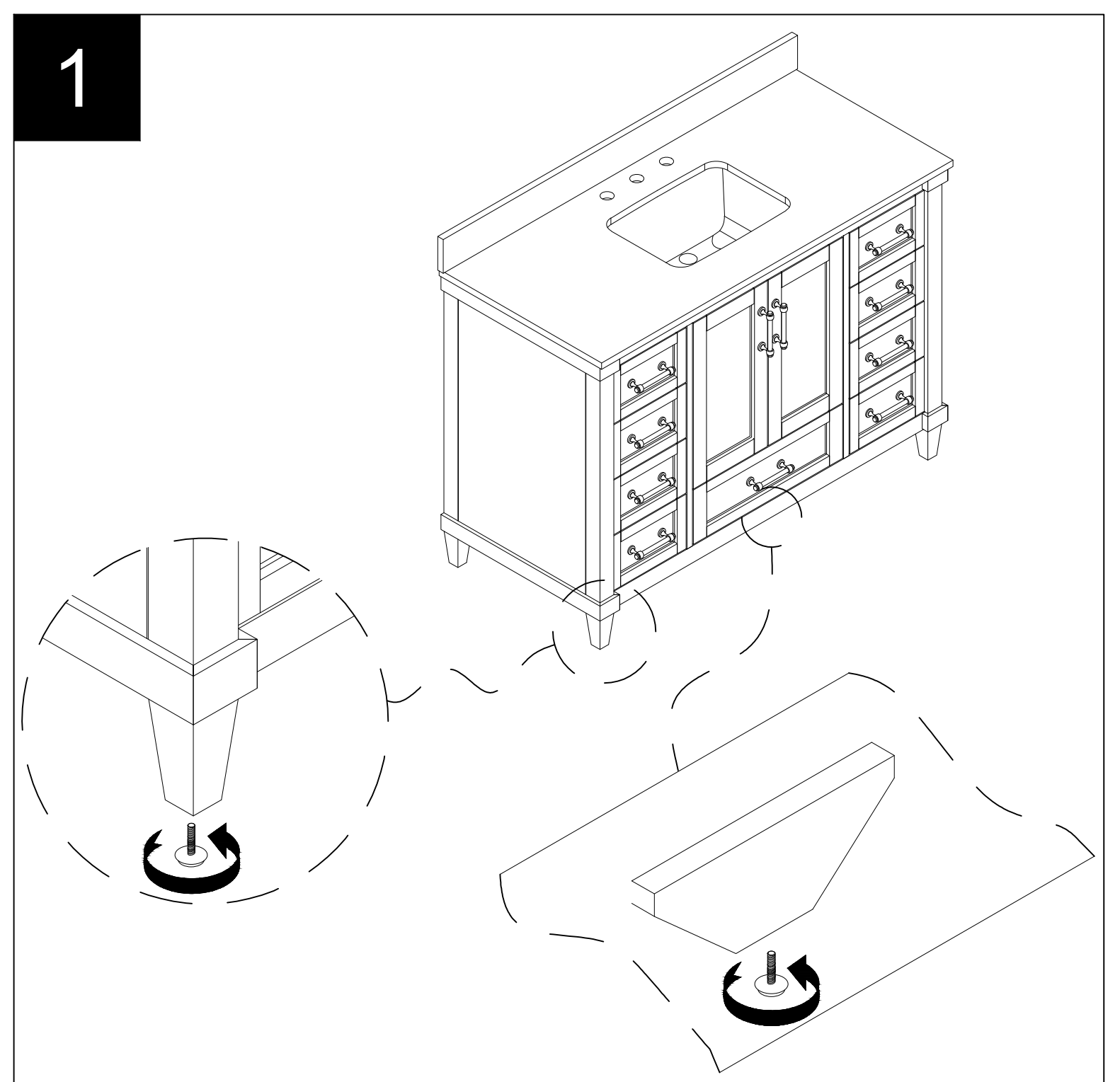
Tools Required for Assembly (not included): Phillips screwdriver, utility knife or scissors, silicone caulk, power drill with drill bit.

Helpful Tools (not included): Measuring tape, level.

## ASSEMBLY INSTRUCTIONS

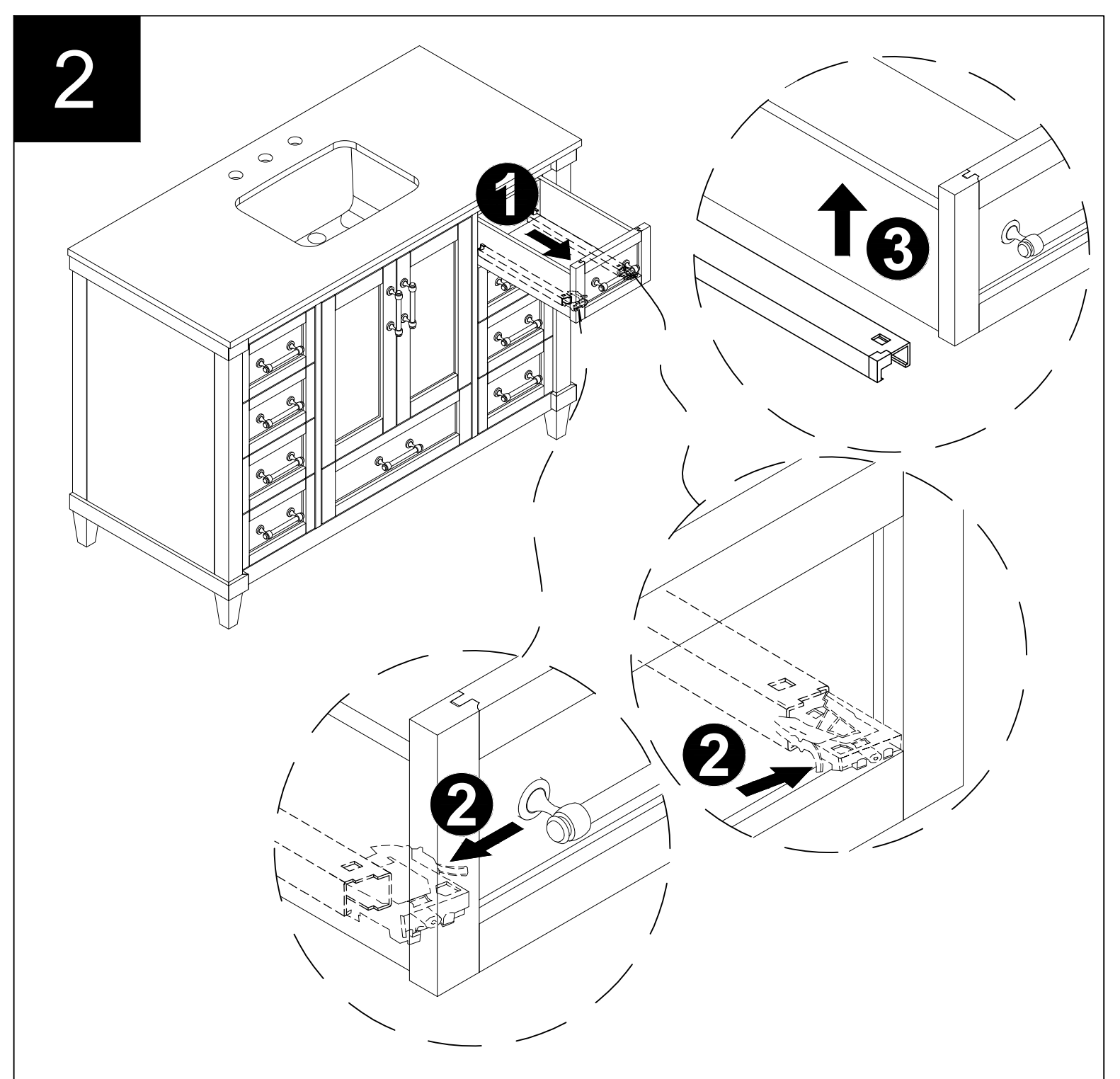
### 1. Adjusting the levelers

- Adjust the leg levelers to ensure that the vanity is even.



### 2. Removing the drawers (optional)

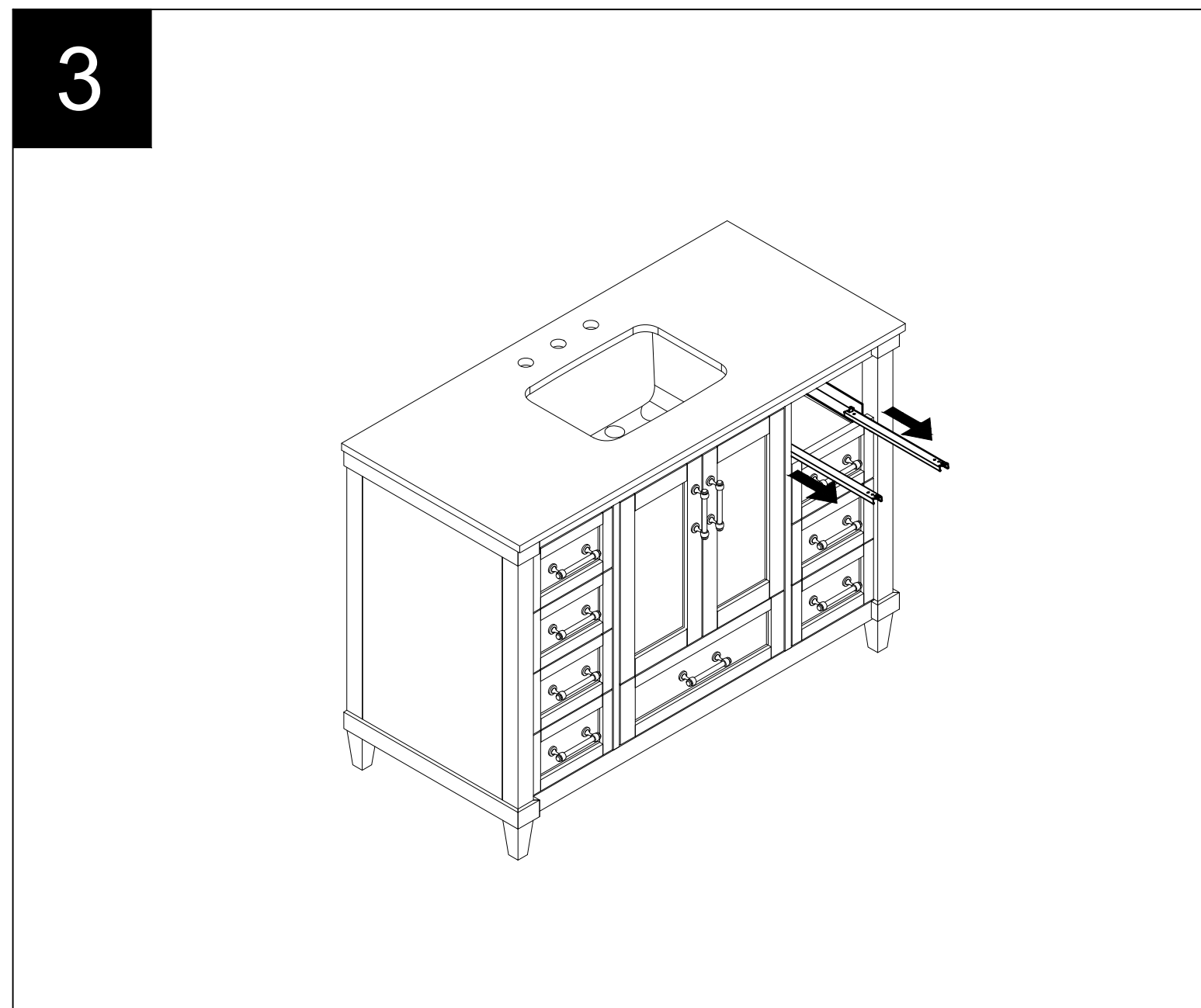
- Fully extend drawers, and locate plastic levers on the metal glide tracks at left and right sides of the drawer box.
- Push on plastic levers on both sides at the same time to disengage the drawer box from the glides.
- Gently lift the drawer up to remove it from the glide tracks.



## ASSEMBLY INSTRUCTIONS

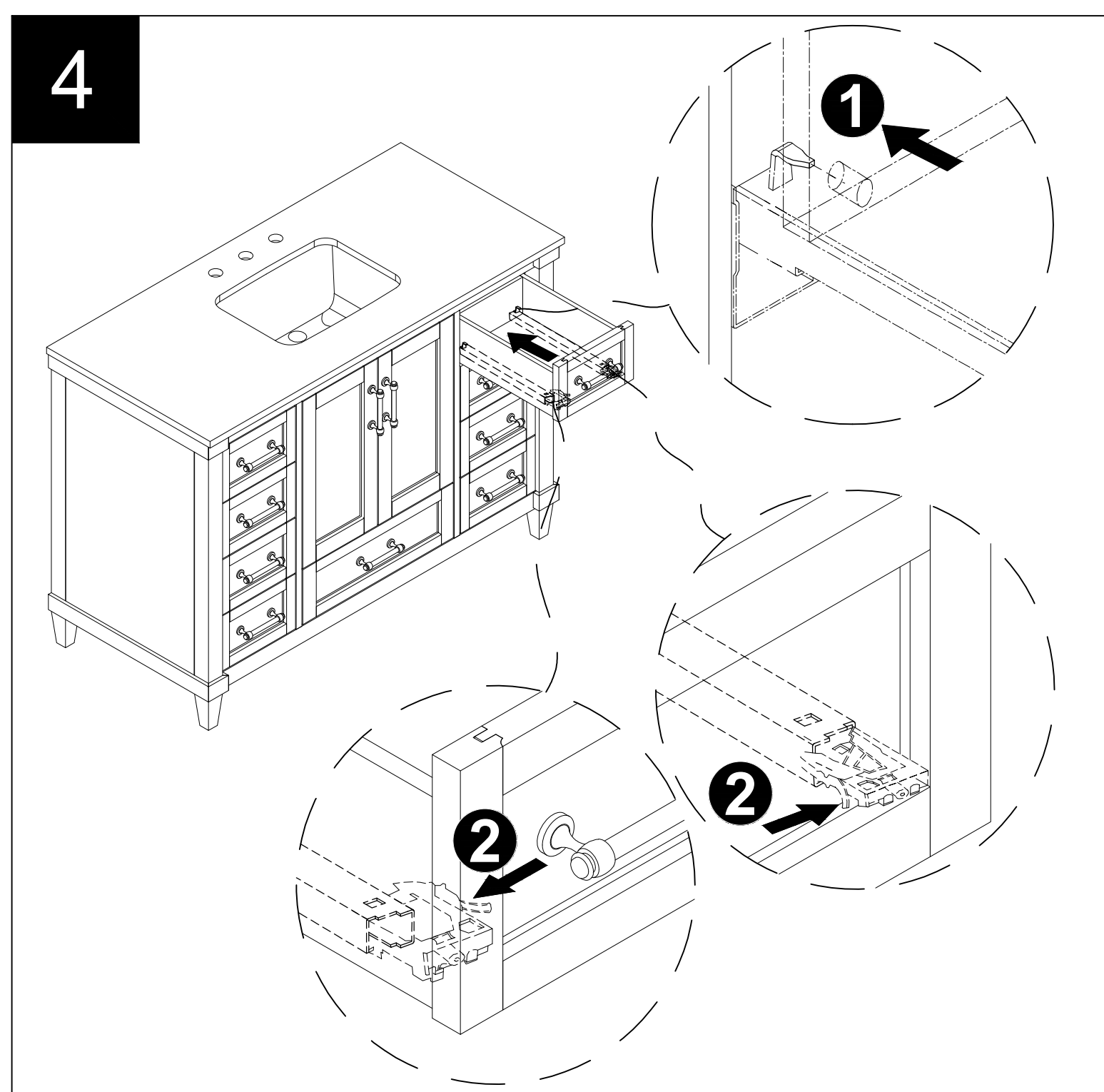
### 3. Reinstalling the drawers (step 3 → 4) (optional)

- Fully extend the metal glide tracks.



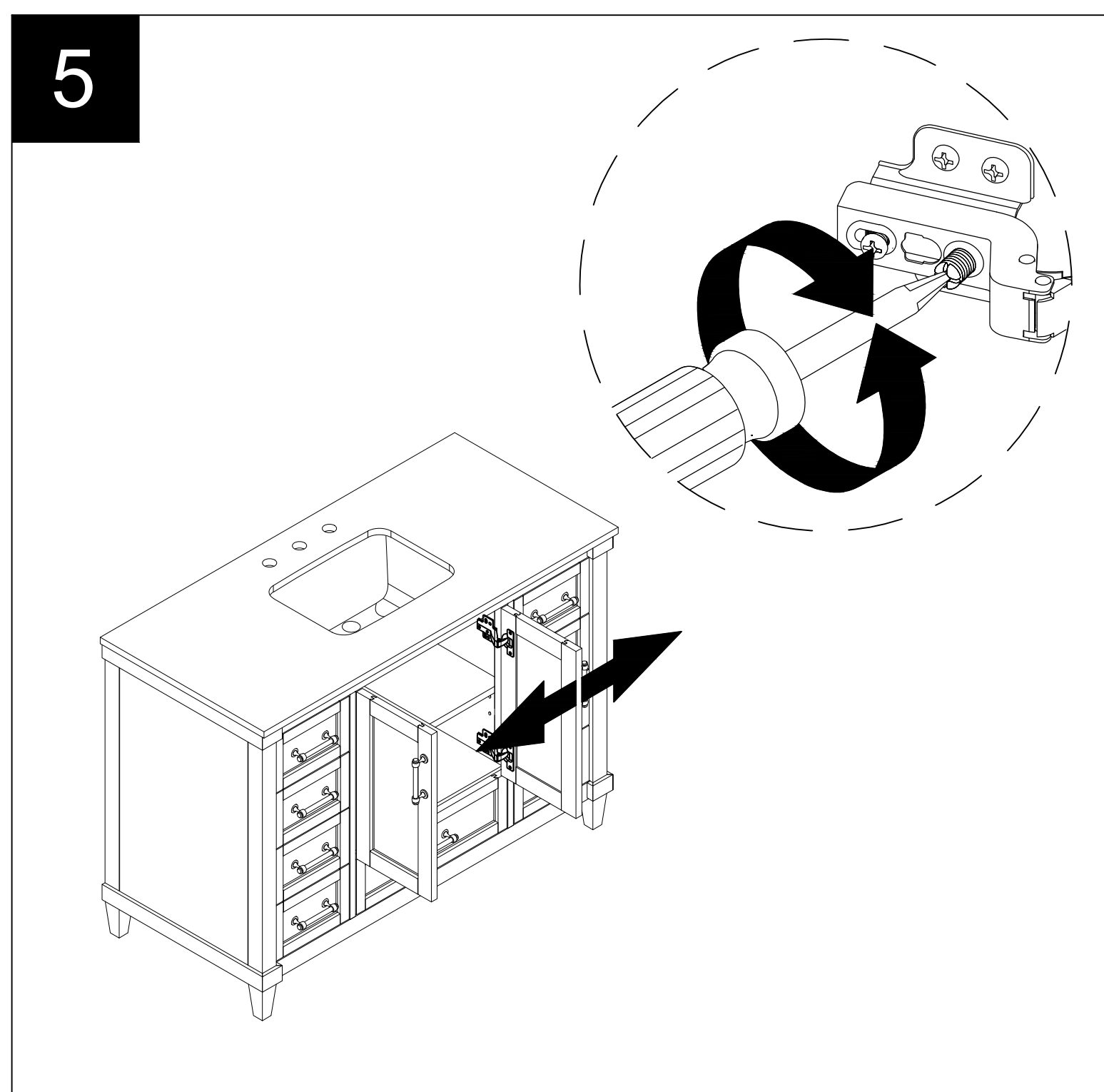
### 4. Reinstalling the drawers

- Gently lower and slide the drawer box into the rear glide catch.
- Lower the drawer box down to completely rest on extended glides and push plastic levers to lock the drawer box in place.



### 5. Adjusting the doors left or right (optional)

- Turn screws (1 pc/ hinge) on both hinges to adjust the door left or right.

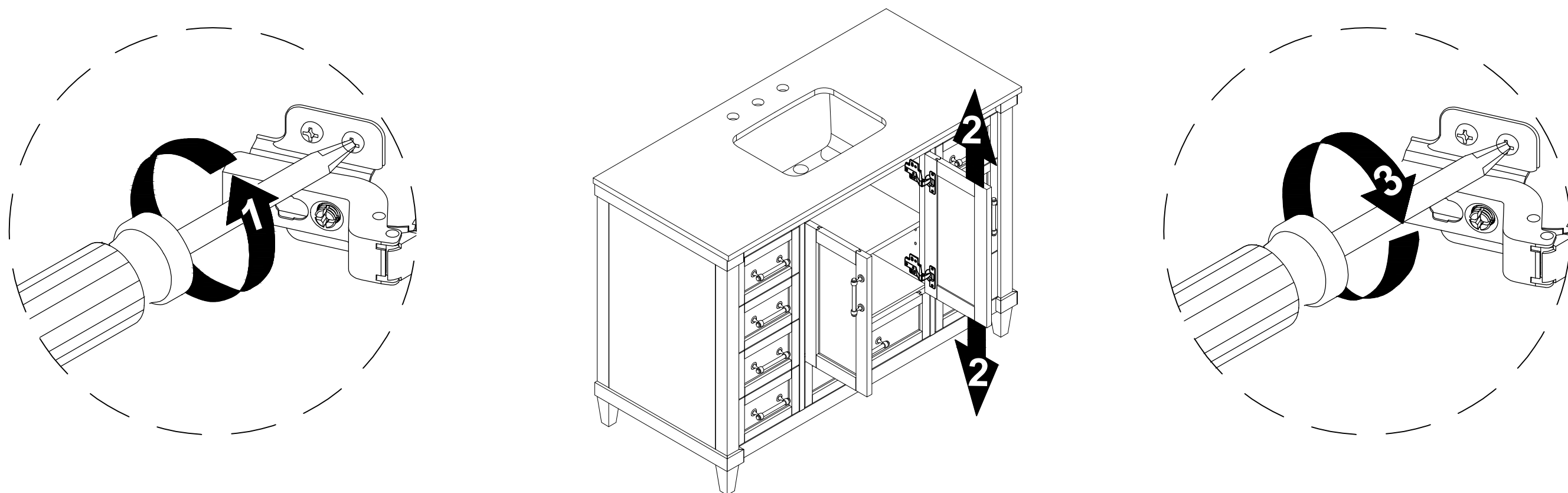


## ASSEMBLY INSTRUCTIONS

### 6. Adjusting the doors up or down (optional)

- Loosen screws (4 pcs/ hinge) on both hinges.
- Adjust door up or down.
- Retighten screws.

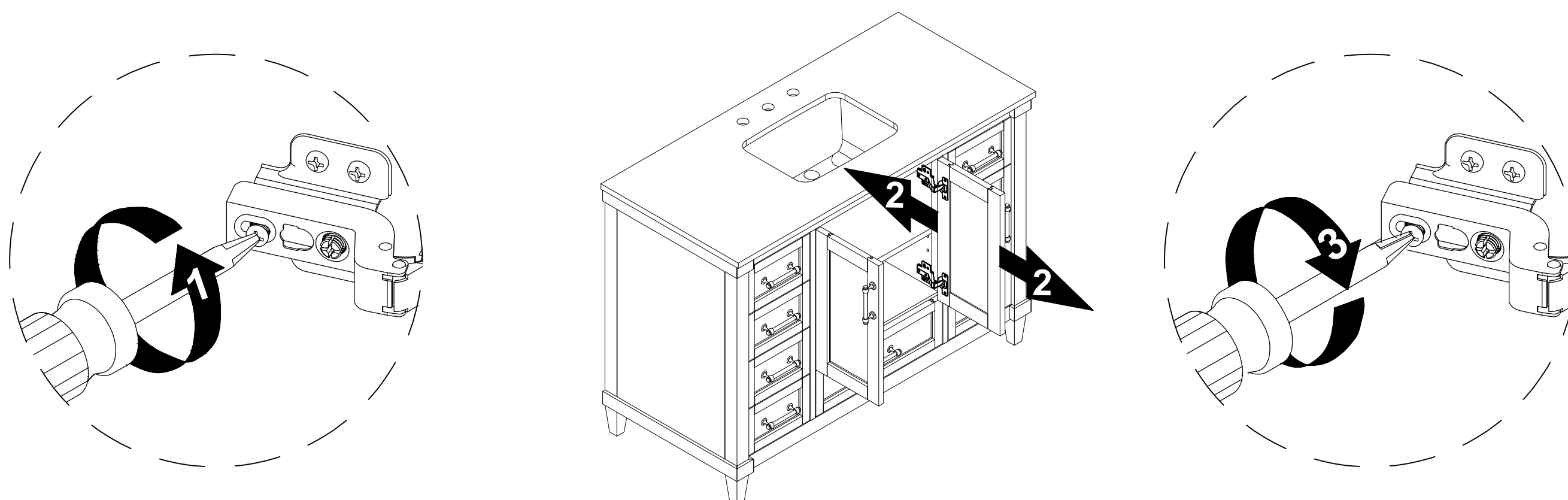
6



### 7. Adjusting the doors in or out (optional)

- Loosen screws (1 pc/ hinge) on both hinges.
- Adjust the doors in or out.
- Retighten screws.

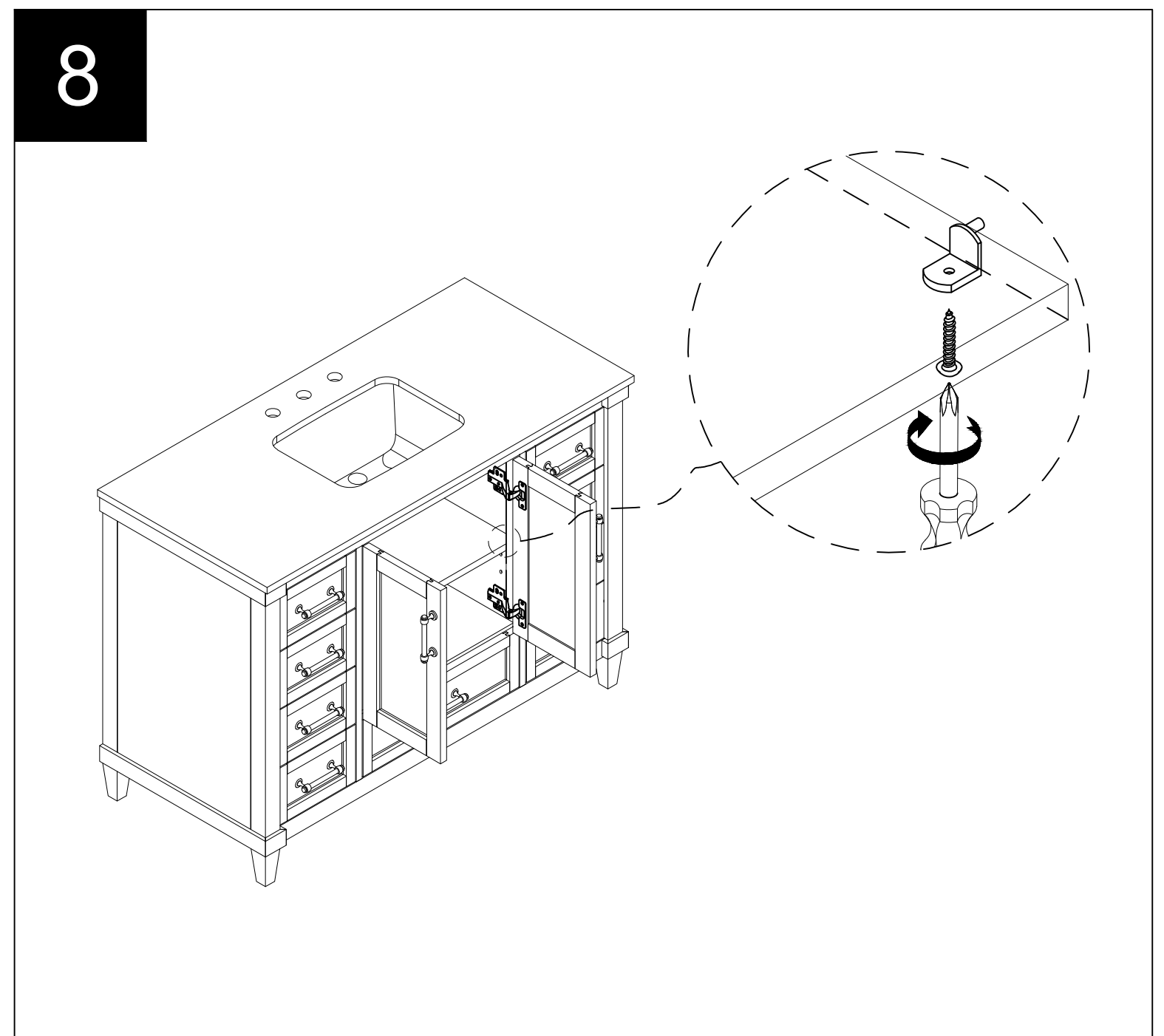
7



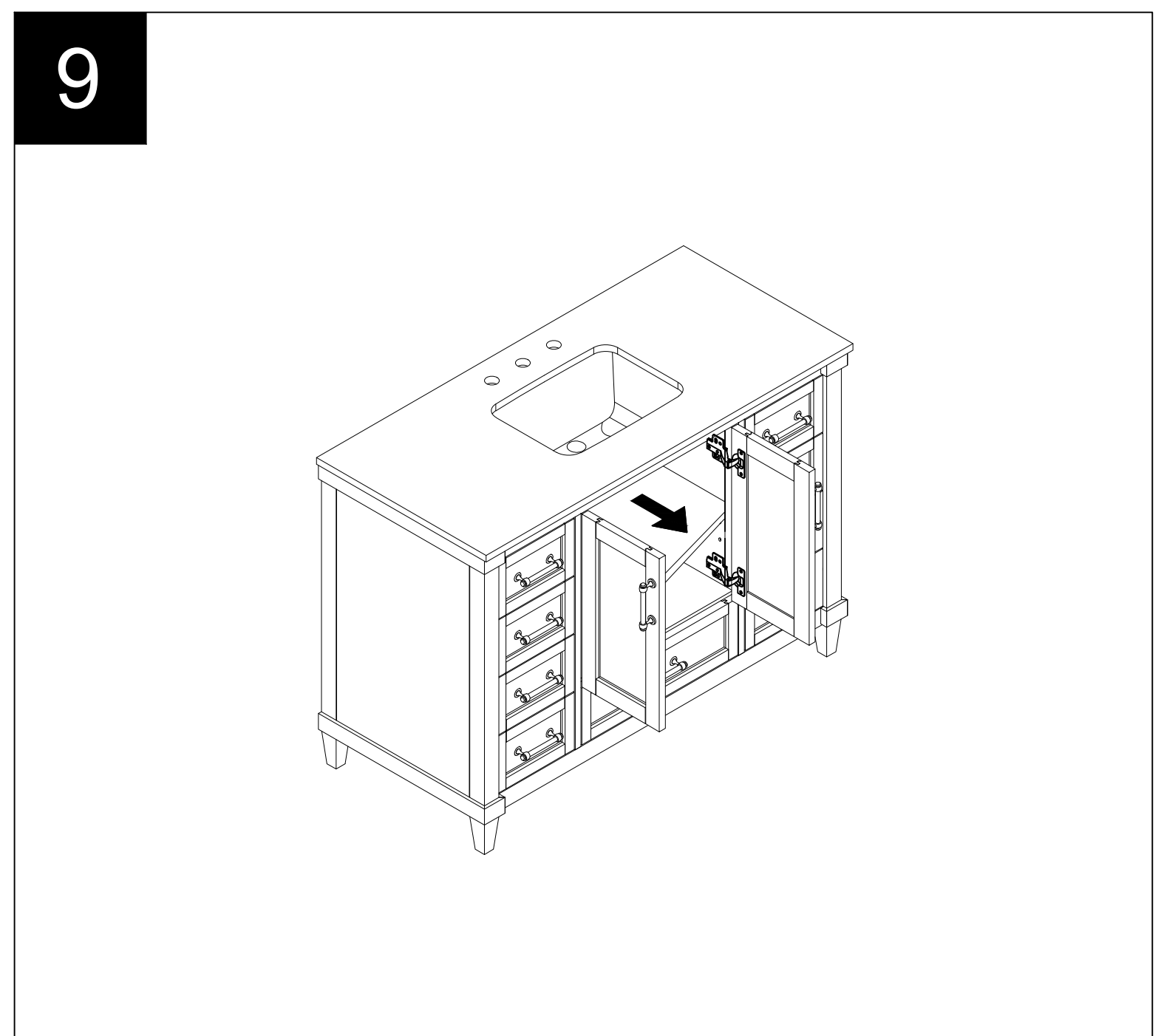
# ASSEMBLY INSTRUCTIONS

## 8. Adjusting the shelf (step 8 -> 11) (optional)

- Remove the shelf screws securing the shelf to the shelf supports (4 screws).

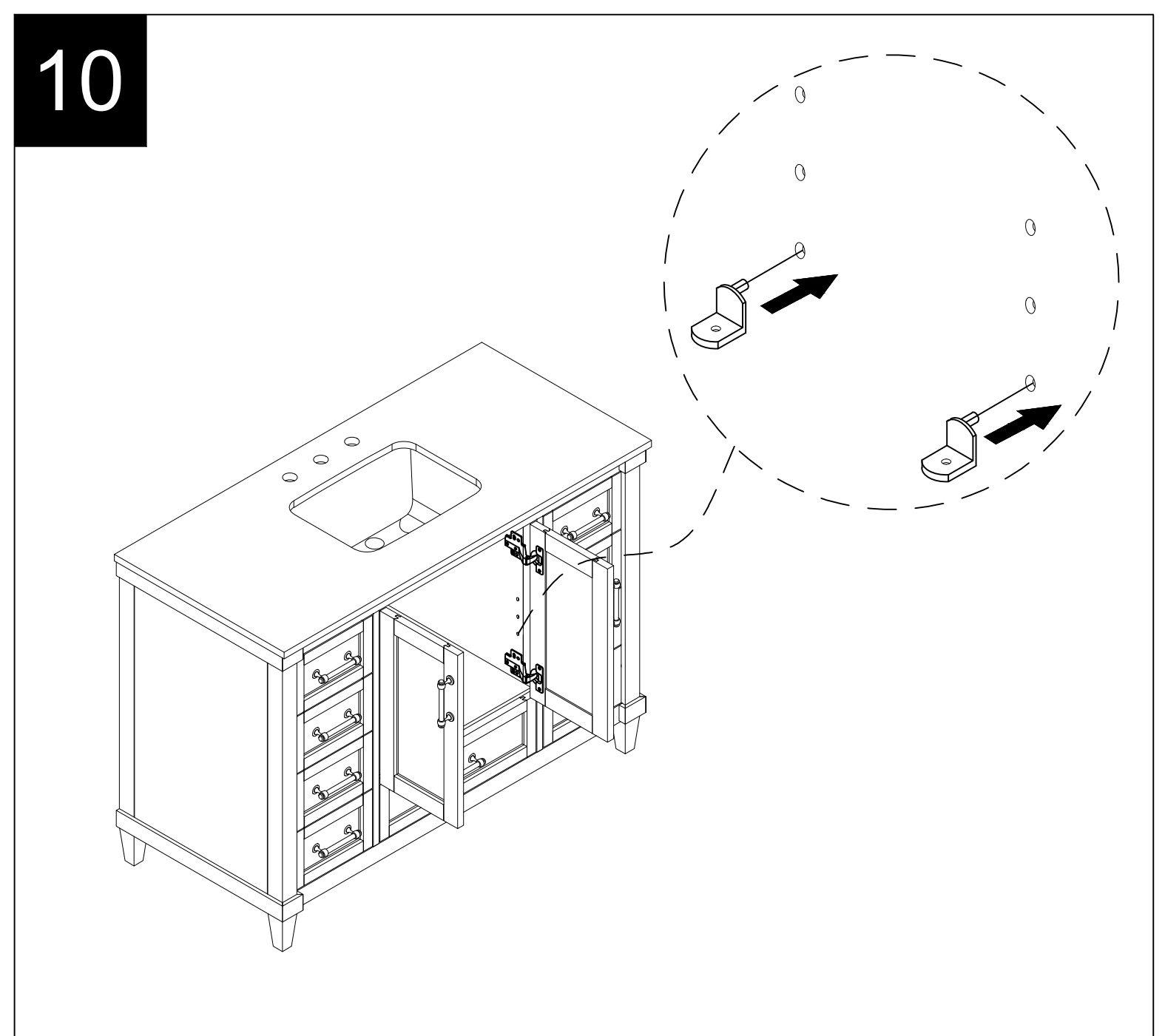


## 9. Removing the shelf from the vanity



## 10. Inserting the shelf supports into the desired holes

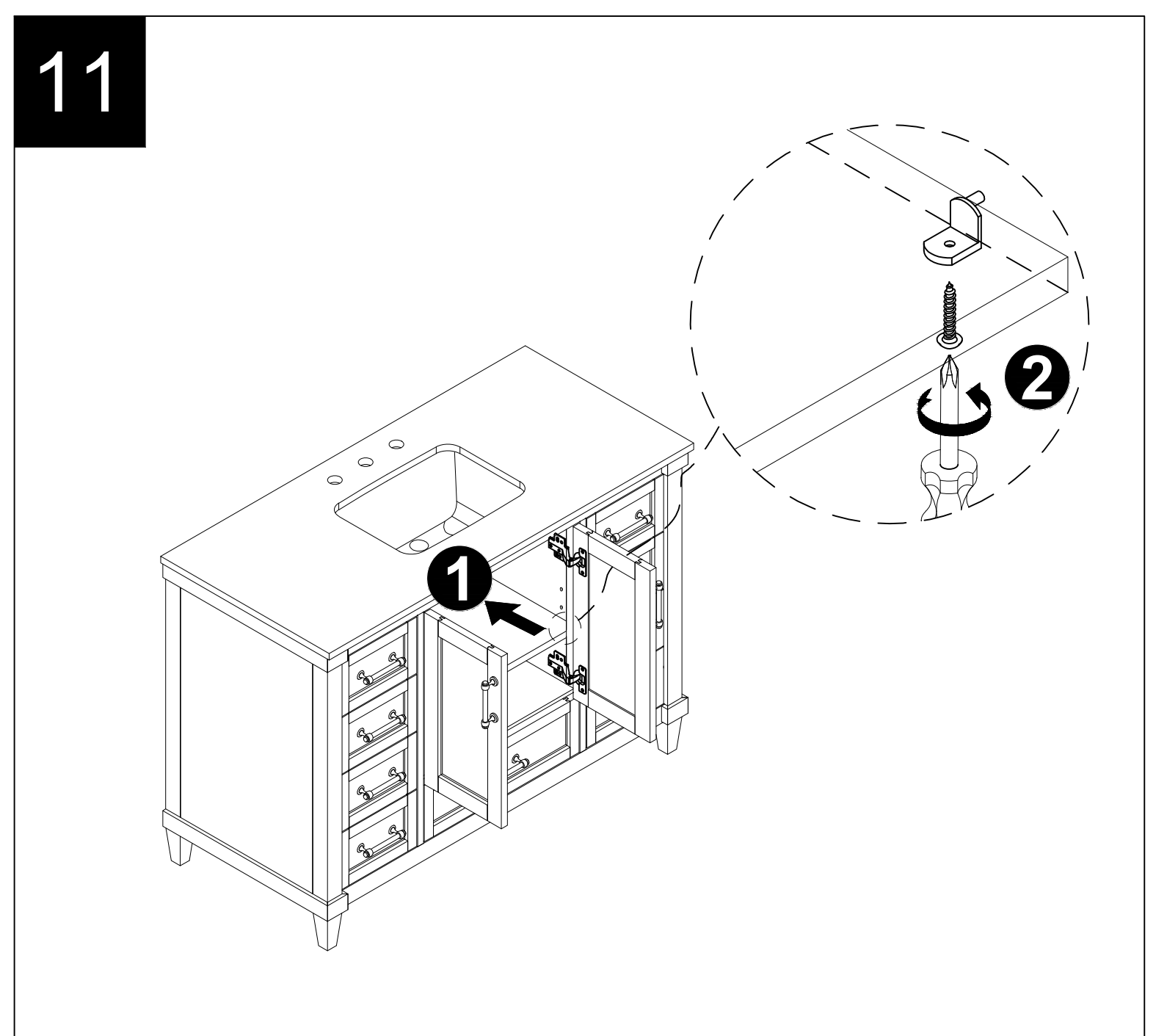
- Ensure that all the shelf supports are level.



# ASSEMBLY INSTRUCTIONS

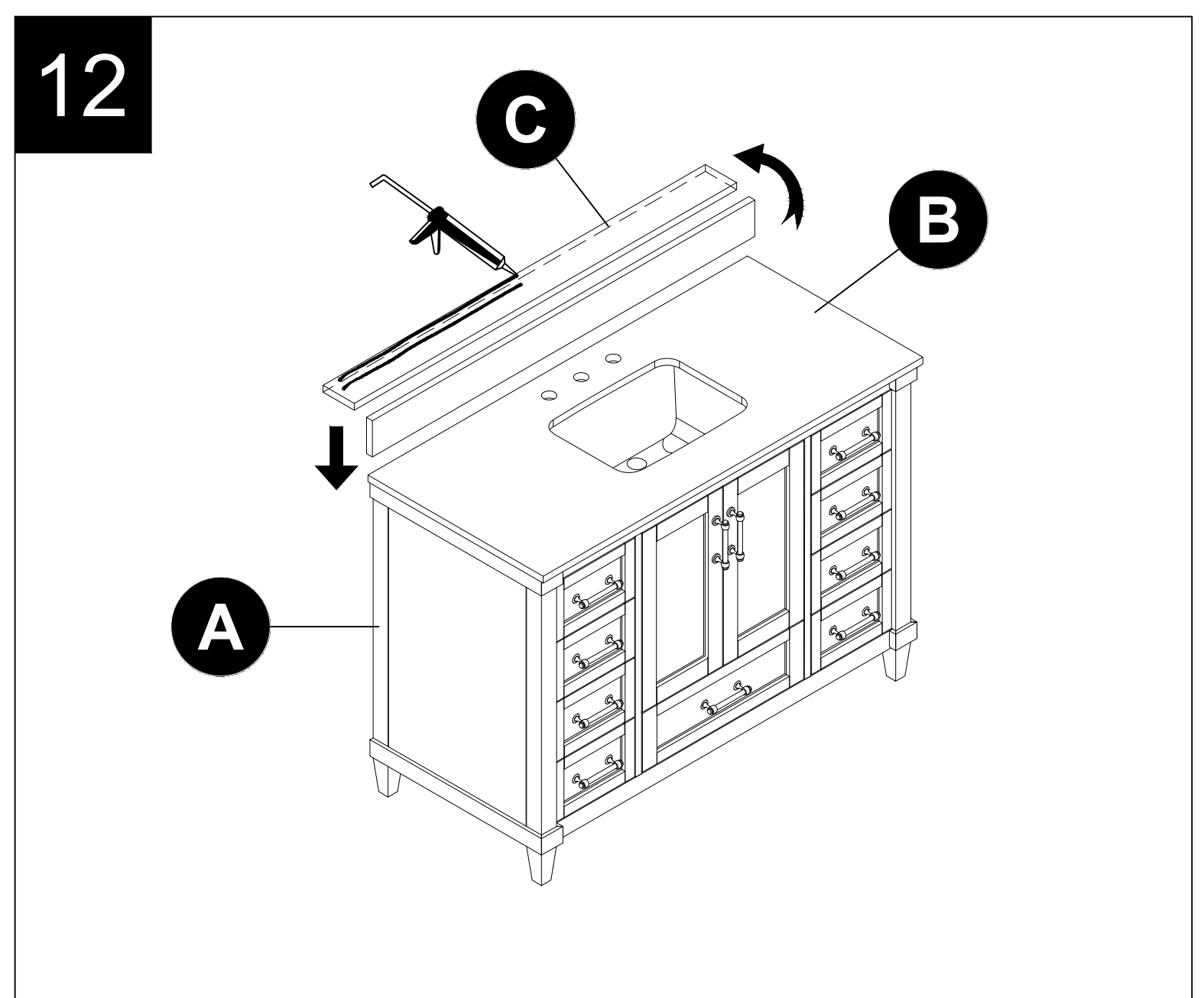
## 11. Reinstalling the shelves

- Gently insert the shelf into the vanity.
- Secure it to the shelf supports using the shelf screws.



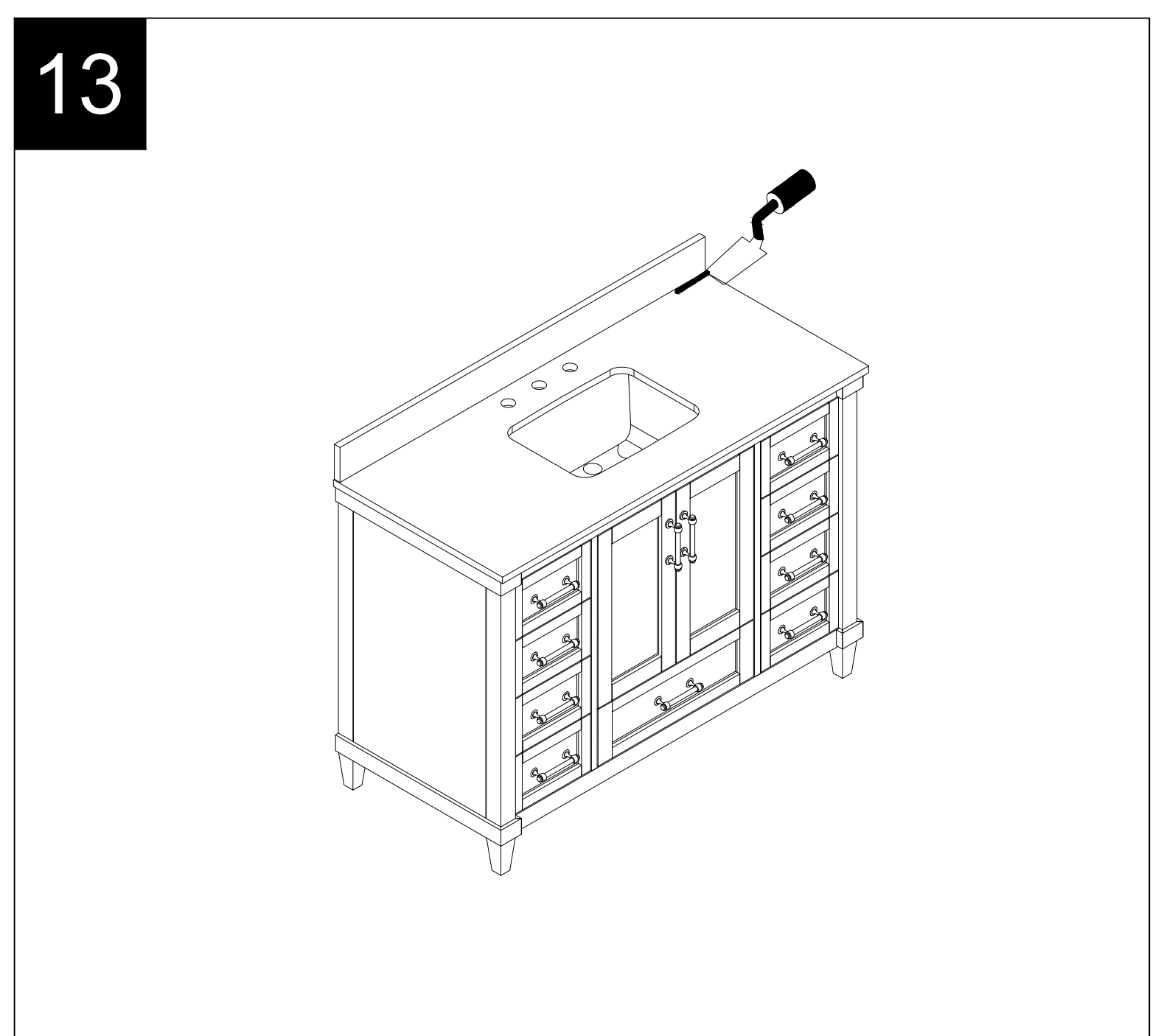
## 12. Applying silicon to the Backsplash (step 12 → 14)

- Apply silicone to the unpolished back side and bottom of the backsplash (C). Place the backsplash (C) on the vanity (A). Be sure to align the backsplash (C) with the top (B) of the vanity (A).



## 13. Removing silicon to the Backsplash

- Gently remove excess glue from the connecting area.



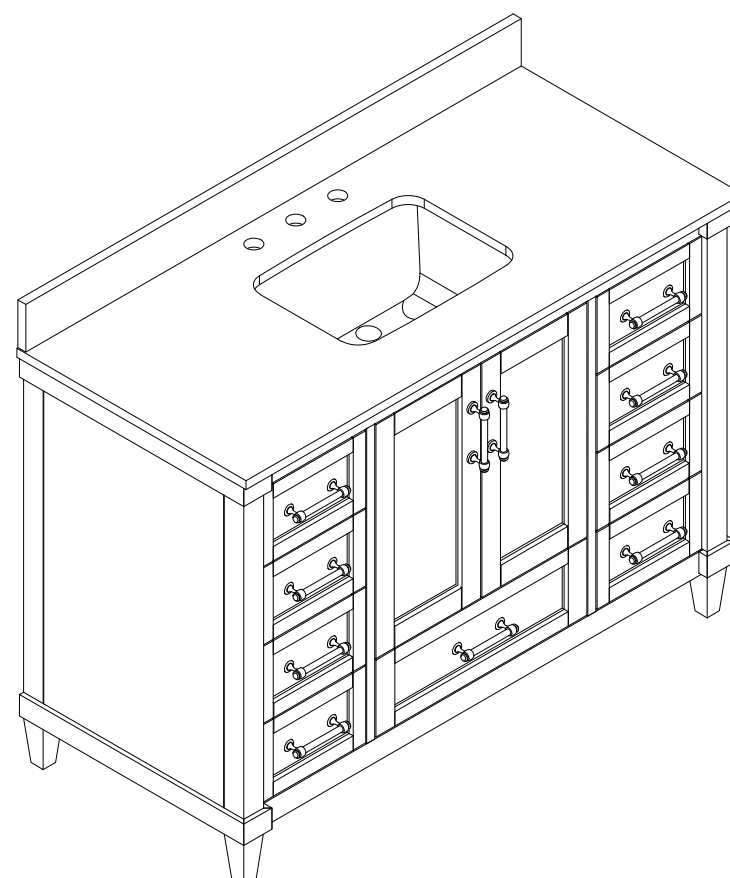


## ASSEMBLY INSTRUCTIONS

### 14. Needing time for silicon to be dried

- Let the vanity and backsplash sit for 24 hour before use.

14

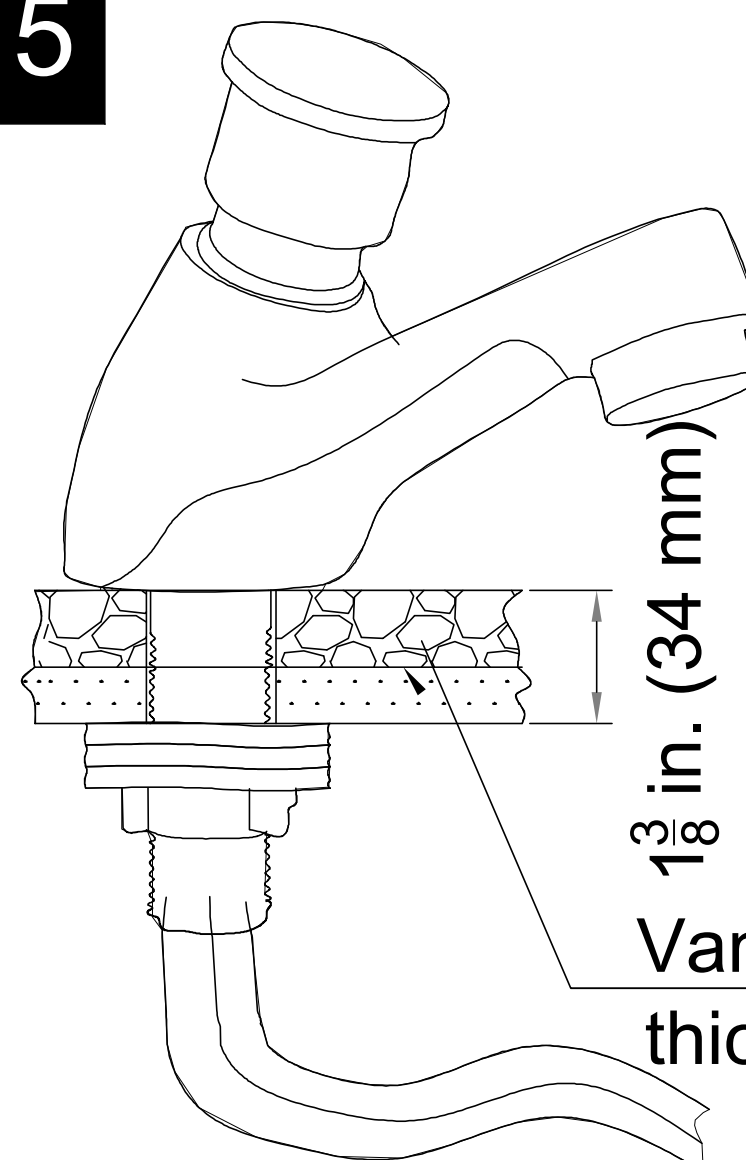


### 15. Installing the faucet (not included in the package)

**Note:** Make sure the thread of the faucet is long enough to fix to the vanity top and connect the water system.

- Installing the faucet base on your own faucet instruction.

15



Vanity top total  
thickness  $1\frac{3}{8}$  in. (34 mm)

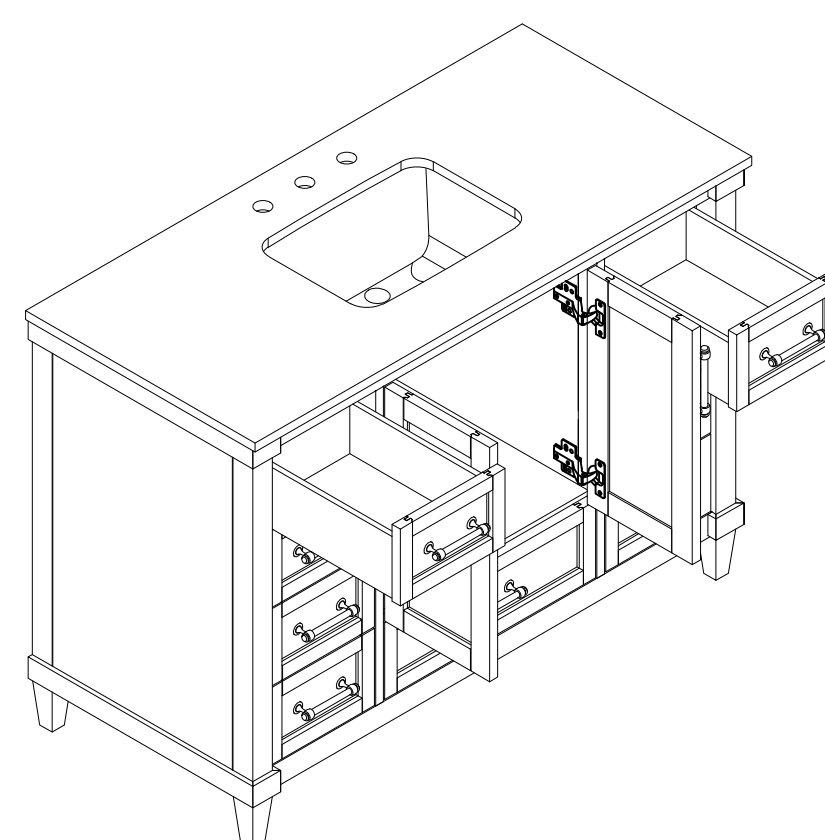
### 16. Removing top - reinstalling/replacing top (step 16 → 20) (optional)

If you need to remove the top for any purpose, do so in the following manner:

- Open the doors and remove the top drawers (Please reference the step 2 on page 4).

**\*Note:** When vanity top is preinstalled.

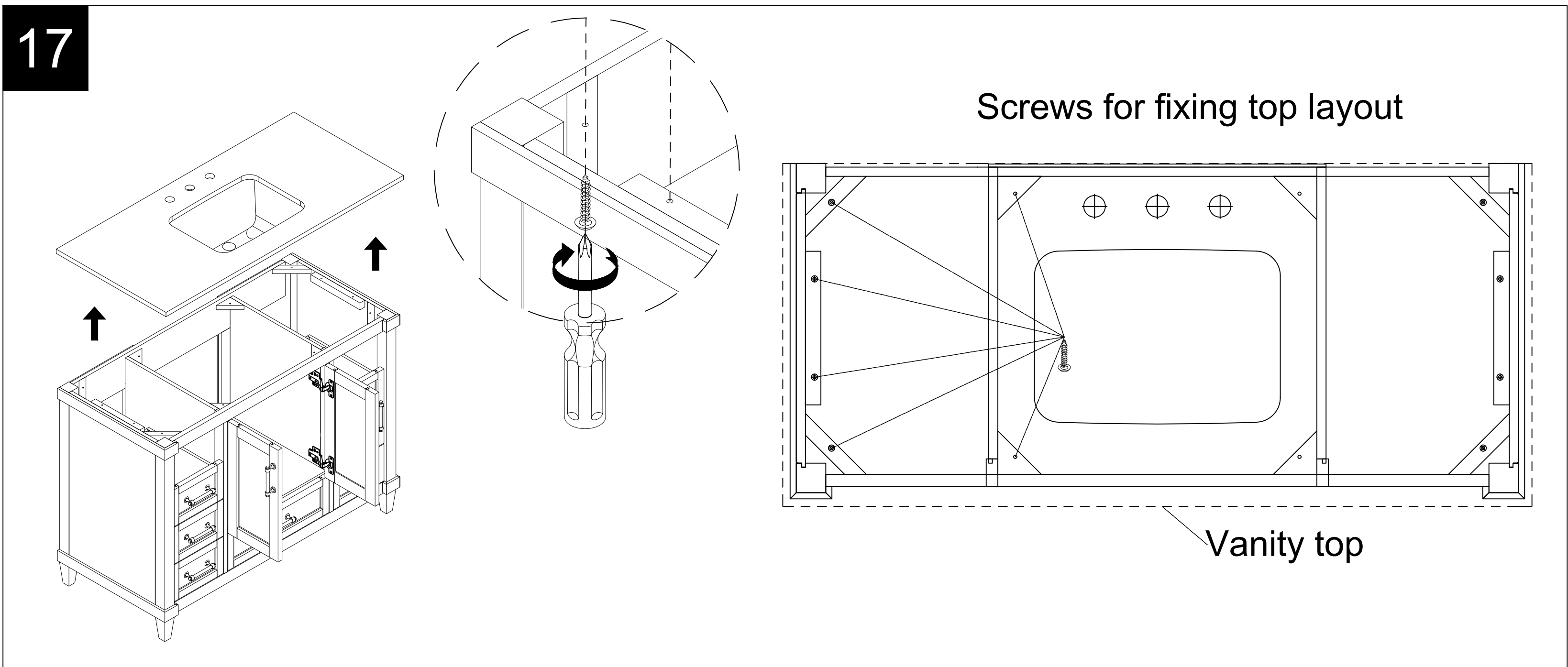
16



# ASSEMBLY INSTRUCTIONS

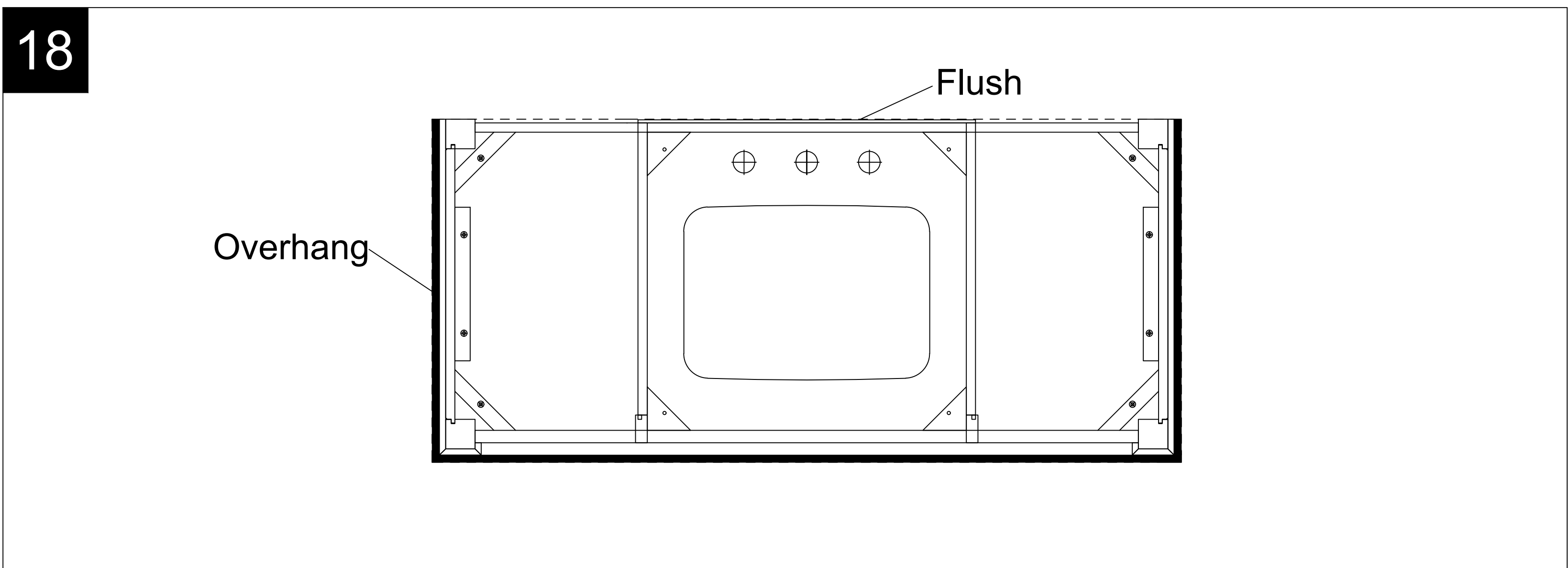
## 17. Removing the top

- Use a screwdriver (not provided) to unscrew these 12 wood screws, and place them face up onto a scratch free surface such as a foam sheet that came in the packaging.



## 18. Placing the top on the vanity

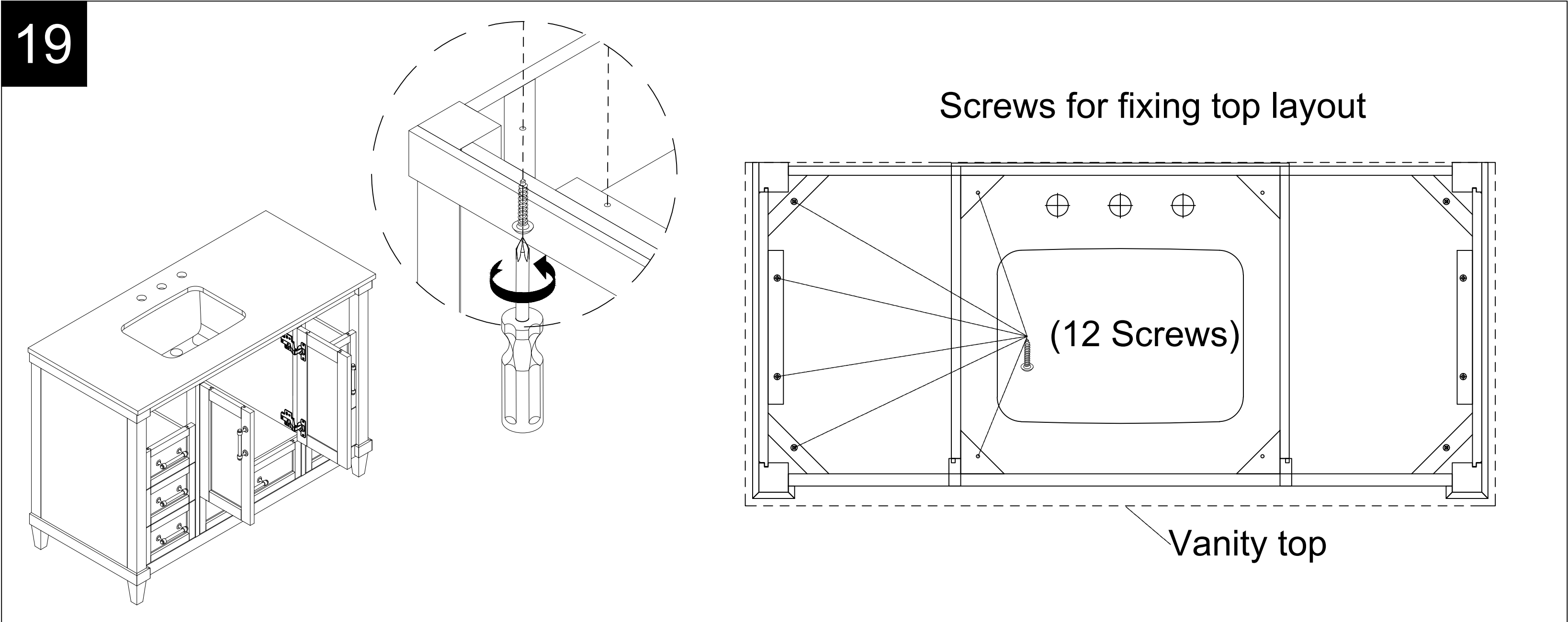
- Place the top on the vanity. Make sure it averages each side and is flush with the back.



# ASSEMBLY INSTRUCTIONS

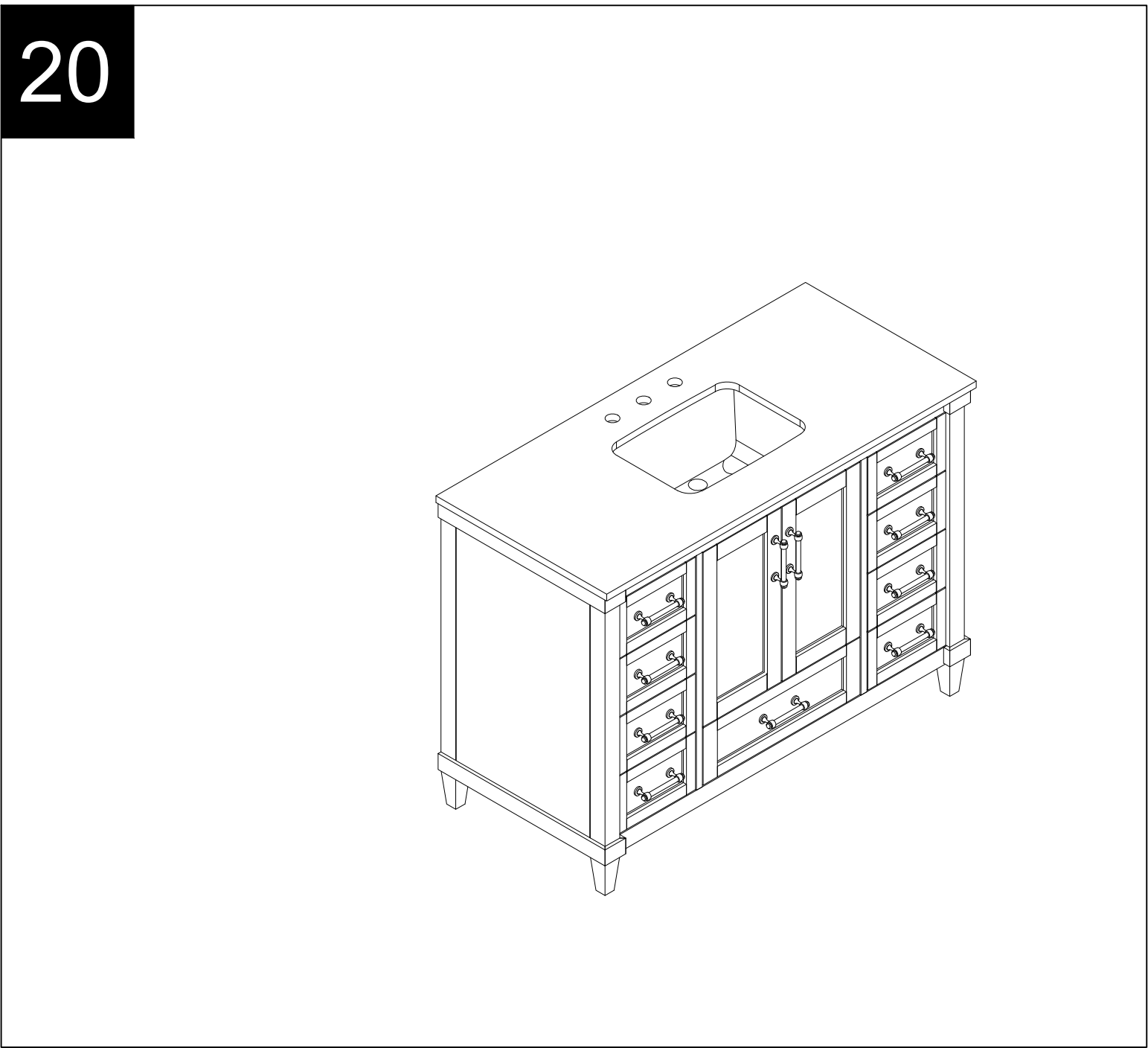
## 19. Re-installing or replacing the top

- Use a screwdriver to secure these 12 wood screws.



## 20. Re-installing the drawers

Please reference the step 3 → 4 on page 5.



## CARE AND MAINTENANCE

---

- Dust the vanity regularly with a soft, non-lint producing cloth or household dusting product.
- You can clean the vanity with a gentle, non-abrasive household cleaner.
- Make sure to dry the wood immediately with a soft cloth or towel.
- The stone top can be cleaned using standard marble cleaning agents available at your local supplier.

## IMPORTANT

- Shade variations and patterns are an inherent characteristic of stone (e.g. granite, marble, engineered stone). Stone tops will vary from product to product. Use caution placing items such as soap or any fragranced material on the stone surface. Use a soap dish, coaster or similar item to protect the surface if placing any soap or fragranced products on the stone.
- If soap or fragranced products come in contact with the stone top, rinse the surface with water and dry using a soft non-abrasive cloth.
- **WARNING:** Must use cleaning agents safe for stone. check your cleaning agents use restrictions before using on any stone. Damage to the stone may result. Vanity manufacturer not responsible for damage caused by improper cleaning agents or soaps used. Warranty will not cover damage caused by the use of improper soaps or cleaning agents.
- **DO NOT** use products to clean the stone top that contain acetone, lemon, vinegar or other acids as these may cause damage to the stone surface.
- Periodically reseal the stone top using an appropriate stone sealer available from your local home store. Follow the manufacturer’s directions on how to apply.

## TROUBLESHOOTING

---

PROBLEM	POSSIBLE CAUSE	SOLUTION
The vanity is tilted.	The levelers are not level.	Adjust the levelers to ensure they are level.

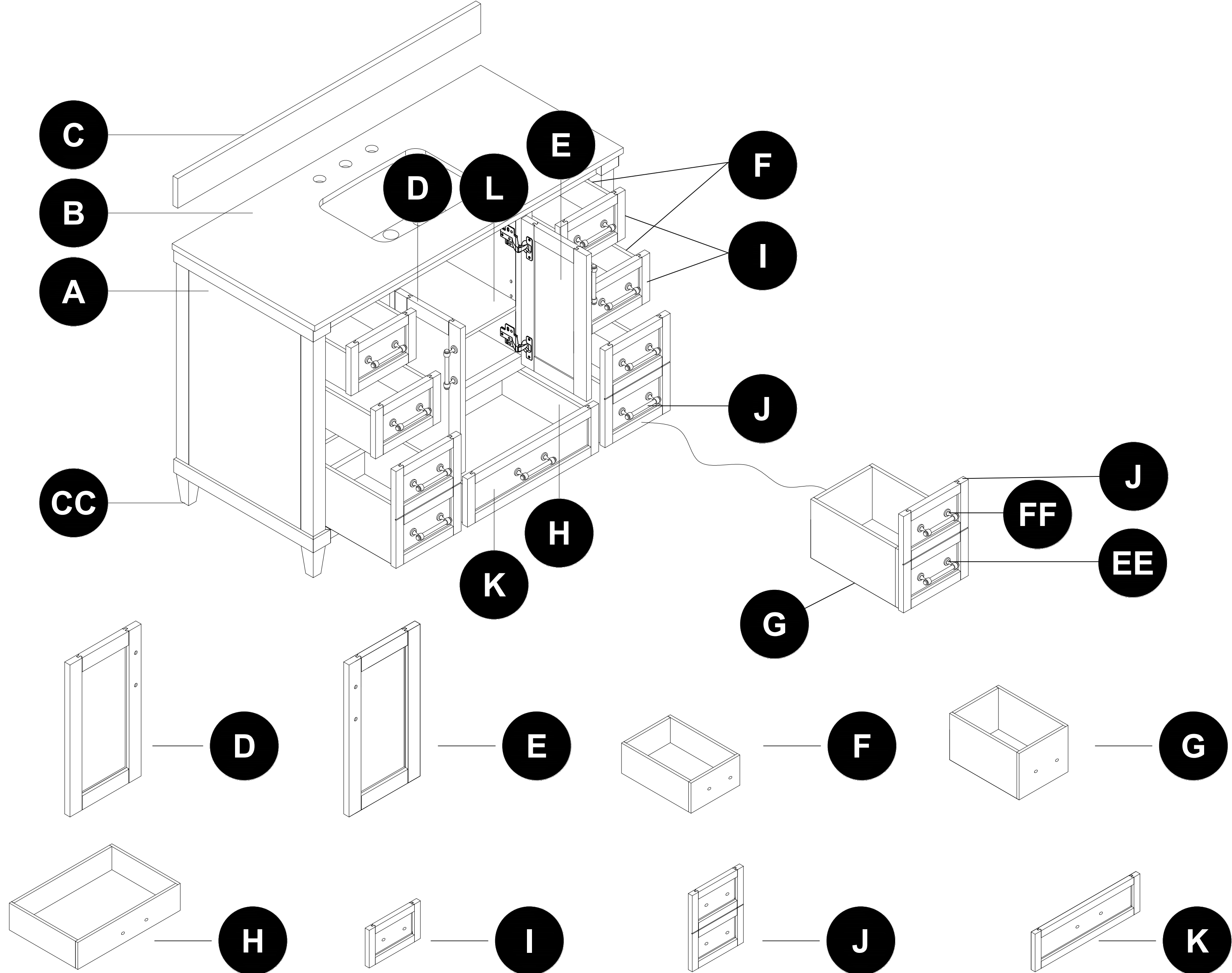
## WARRANTY

---

The manufacturer warrants this item against defects in materials and workmanship for a period of one (1) year from the date of original retail purchase. This warranty applies only to the original purchaser. This warranty does not apply to any damage on the product by accident, misuse, or modified, improper installation or by affixing accessories not produced by the manufacturer. The manufacturer is not accountable whatsoever for product installation during the warranty period. There is no further expressed warranty. The manufacturer shall not be legally responsible for incidental, consequential or special damages arising at or in connection with product use or performance except as may otherwise be accorded by law. The manufacturer disclaims any and all implied warranties.

# REPLACEMENT PARTS LIST

For replacement parts, call our customer service department at **866-439-9800**, 8 a.m. - 8 p.m., EST, Monday - Sunday. You may also contact us at **ascs@lowes.com**.



PART	DESCRIPTION	PART#
C	Backsplash	BS-10148400
D	Left door	0208V4822WH-LDO
E	Right door	0208V4822WH-RDO
F	Top drawer box	0208V4822WH-TDB
G	Bottom drawer box	0208V4822WH-BDB
H	Large drawer box	0208V4822WH-LDB
I	Top drawer front	0208V4822WH-TDF
J	Bottom drawer front	0208V4822WH-BDF
K	Large drawer front	0208V4822WH-LDF
L	Shelf	0208V4822WH-SH
AA	Handle	HD-01900510
BB	Undermount glide	UG-14002300
CC	Leveler	LV-51622020
DD	European hinge	EH-09001300
EE	Bolt for door and drawer	BO-53228321
FF	Bolt for first handle of bottom drawer	BO-53215321
GG	Shelf Bracket	SB-00002300