

ColorWave™

CONCRETE STAIN

COLORWAVE® HOW-TO GUIDE

Concrete must be cured for 30 days before applying ColorWave®

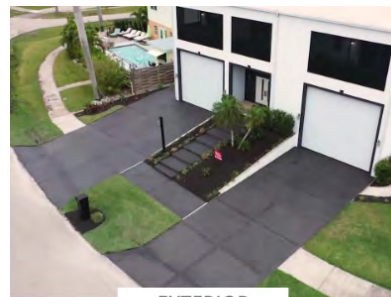


STEP 1: WATER ABSORPTION TEST

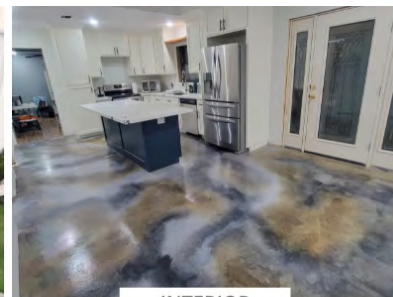
- Pour water on concrete.
- Wait 5 minutes.
- If water doesn't soak in, clean and use CitrusEtch™ to etch surface (see CitrusEtch™ How-To Guide for details)
- If concrete absorbs water, it's suitable for ColorWave® water-based concrete stain application after completing Step 2.

STEP 2: CLEAN SURFACE

- Remove all dirt, dust, residues, paint, adhesives, and oils from the surface to ensure proper ColorWave® adhesion.
- If stripping is necessary, use a suitable stripping product that is safe for your specific surface.
- In case of heavily stained or soiled areas, consider using a pressure washer to remove stubborn dirt and grime.
- For surfaces with previous sealer applications, it may be necessary to strip the old sealer before applying ColorWave®.
- Allow surface to dry completely.



EXTERIOR



INTERIOR



TOOLS FOR THE JOB

SURFACE PROTECTION PERSONAL PROTECTION APPLICATION TOOLS CLEAN-UP



STEP 3: COLORWAVE® APPLICATION

- ColorWave® is easy to work with and allows for multi-color, mottled variegated designs.
- No need to wait for drying between coats.
- Semi-transparent water-based stain; doesn't fully cover surface imperfections like paint would.
- Expect about 200 sq ft per gallon coverage (two thin coats), varying based on concrete texture, surface porosity, and application method.
- Apply ColorWave® when surface temperature is 40°F (4°C) to 95°F (35°C).

CAUTION: Potential harm from swallowing/ingestion. Skin contact may cause mild irritation. Avoid eye contact.

OPTION 1: SPRAYING METHOD

- Remove filters from the sprayer and shake the ColorWave® container well before pouring it in.
- Start in a distant corner, spraying in circular motions. Frequently shake the sprayer tank for consistent color mixing.
- Apply up to 4 thin coats. When using multiple colors, there's no need to wait for drying time between coats; wear spiked shoes to avoid footprints.
- Let the surface dry for at least 12 hours before sealing.



OPTION 2: FOAM BRUSH OR SPONGE (BEST FOR SMALLER PROJECTS)

- Shake the ColorWave® bottle well, and if using a bottle larger than 4 ounces, pour a small amount into a separate container. Dip the foam brush directly into the 4-ounce bottle.
- Saturate a foam brush or sponge with ColorWave®.
- Apply to the surface using the foam brush or sponge. If using multiple colors, there's no need to wait for drying time between coats, but wear spiked shoes to avoid leaving footprints.
- Allow the surface to dry for at least 12 hours before sealing.

	<p>Coverage per Gallon: Approximately 200 Sq. Ft. 2 Thin Coats Recommended</p>	<p>Approx. Dry Time: 12 Hr. Sealer Application</p>	
	<p>Temperature Range: Apply Between 40°F (4°C) and 95°F (35°C)</p>	<p>Tools Clean-Up: ProClean Degreaser™ and Warm Water</p>	

STEP 4: PROTECT & POLISH

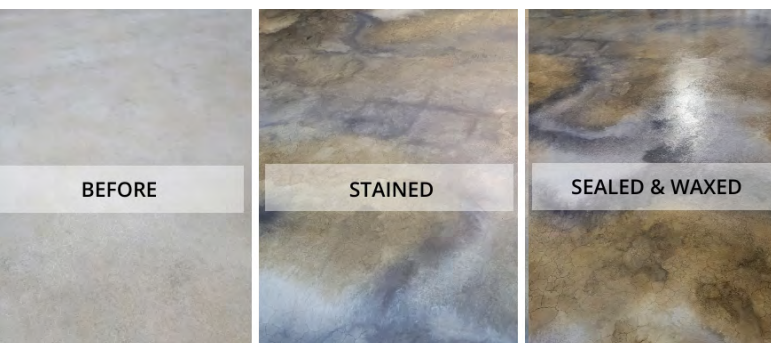
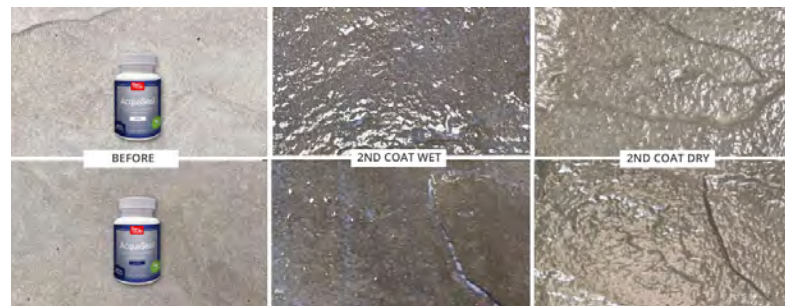
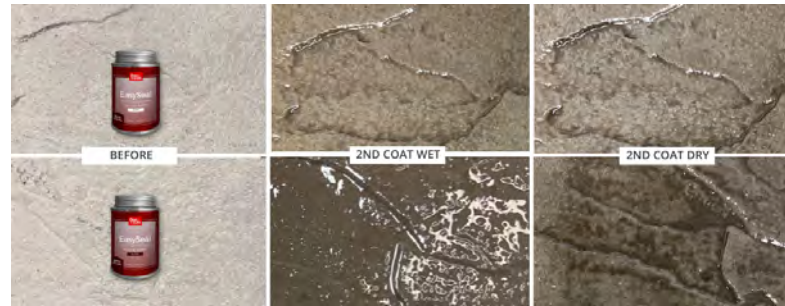
INTERIOR & EXTERIOR:

1. Choose a sealer:
 - EasySeal™ Solvent-Based Sealer: Intense color pop, strong chemical odor during application and curing.
 - AcquaSeal™ Water-Based Sealer: Less intense color pop, low odor, ideal for areas where strong fumes are undesirable.
2. Apply two thin coats of the chosen sealer.

FOR INTERIORS:

3. After sealer is fully cured, apply two thin coats of ProWax Polish™.

Refer to How-To Guides for further instructions on AcquaSeal™, EasySeal™, and ProWax Polish™ application.



COLORWAVE® MAINTENANCE

EXTERIOR:

- Apply sealer every 2-3 years.
- Resealing frequency depends on weather conditions and use.

INTERIOR:

- Apply ProWax Polish™ every 2 years, or spot treat high-traffic areas as needed.

Disclaimer: Direct Colors does not provide a warranty for the outcomes of using their products. Results may vary due to concrete variations or improper application, so it is recommended to test the product on a small inconspicuous area before full application. This allows for checking the compatibility and ensuring the desired outcome before fully curing the product.

